
REAL BULLS FOR THE REAL RANCHER

**PASTURE TO PLATE FOCUSED
CONVENIENCE & ECONOMIC TRAIT DRIVEN**

27TH ANNUAL PRODUCTION SALE

SATURDAY, APRIL 17, 2021

FEIRING ANGUS RANCH | 1:00 PM CDT
3 MILES EAST OF WHITE EARTH, ND

FEIRING ANGUS RANCH
ASH COULEE RANCH

27TH ANNUAL PRODUCTION SALE

SATURDAY, APRIL 17, 2021

FEIRING ANGUS RANCH | 1:00 PM CDT | 3 MILES EAST OF WHITE EARTH, ND
COMPLIMENTARY LUNCH STARTING AT 11:20 AM

SALE DAY CONTACTS

Feiring Angus Ranch 701-755-3449
Feiring Angus Ranch 701-755-3442
Doug Feiring, cell 701-629-1912
Scott Davis, cell. 701-641-8705

SALE STAFF

Roger Jacobs, Auctioneer . . . C. 406-698-7696/H. 406-373-6124
Kris Peterson, Farm & Ranch Guide 701-339-0305
Vern Frey, Cattlemens Business Weekly. 701-721-0344


ACCOMMODATIONS

Microtel Inn & Suites 701-628-4090
901 Jurad St., Stanley, ND
Black Gold Suites 701-664-4464
201 Elm St., Tioga, ND
Tioga Motel 701-664-3395
210 2nd St. E, Tioga, ND
Other accommodations in Williston, New Town and Minot, ND. Please call if you need assistance.

INSPECTION OF CATTLE

The cattle will be available for inspection at the sale site on Thursday. Prior to this, visitors are welcome anytime at the Feiring Ranch or Sheldon feedlot where Ash Coulee Ranch bulls are being fed.

ABSENTEE BIDS

Online bidding available through  DVAuction, www.dvauction.com
Anyone who cannot attend the sale may place phone or mail bids to the auctioneer, one of the ring men, Doug Feiring, or Scott Davis. Bids will be handled as if you are present. Sight Unseen Guarantee. Bidding is also available through DVAuction.

TERMS AND CONDITIONS

We will conduct this sale under the suggested sale terms and conditions adopted by the American Angus Association.

HEALTH

Health and brand papers will be furnished. All cattle have been for IBR, Pi3, BVD, Pasturella, Haemophilus Somnus and poured with Vettricmec. All females have been bangs vaccinated for brucellosis and will be vaccinated with PreGuard 10 FP before the sale. All bulls have been vaccinated with PreGuard 10 FP and Fusogard (footrot vaccine) so their ready to work for you.

EPDS AND FINAL PERFORMANCE DATA

Current EPDs are used whenever possible. Please note that EPDs may change from the time the catalog is printed until the registration papers are transferred. Performance information will be available on and before sale day.

ULTRASOUND CARCASS DATA

JJ Hovde, AAACUP certified technician, has ultrasounded all bulls for marbling, rib eye, back and rump fat. Results will be available on website or sale day.

ANNOUNCEMENTS

Announcements from the auction block will take precedence over information in the catalog.

INSURANCE

Insurance will be available through Bill Pelton.

DELIVERY

\$50.00 off per bull/picked up sale day. Or Free delivery on bull(s) within 250 miles radius. After 250 miles, we meet you or drop off at a central location point (sale barn, vet clinic or?) that has been agreed on to be a central location point by all parties.

FEEDING ARRANGEMENTS

We can board you bull(s) till you need them. Feiring bull(s) will remain at Feiring Angus Ranch. Ash Coulee bull(s) will be taking back to Sheldon Feedlot and cared for them there. There will be a \$2.00 per head/per day charge with this service. And you will be responsible for picking up the bull(s) at either place, unless prior arrangements have been made.

OUR GUARANTEE

To our knowledge, these bulls are fertile and have passed a breeding soundness exam and are guaranteed for the first breeding season (60 days) which begins when you turn out the bull(s). The semen test conducted by a licensed veterinarian consisted of both an internal and external exam. Scores were derived from scrotal measurement and microscope examinations to determine the motility and morphology of the sperm.

If a bull fails to settle cows or heifers, assuming he is in good condition and not injured, we will provide you with a satisfactory replacement if available. If a replacement is not available, we will issue you credit equal to your purchase price minus the salvage value that may be used towards the purchase of any animal for sale through our annual production sale or private treaty. We must be notified immediately and before selling the infertile bull in question. We also reserve the right to a second opinion from a veterinarian of our choice and 60 days to determine if the bull is infertile. This guarantee is to ensure the bull's fertility only.

LIABILITY

Everyone attending this bull sale does so at his or her own risk. Neither Feiring Angus nor Ash Coulee Ranch assumes liability, legal responsibility for any accidents, or for the behavior of animals.

RETAINING INTEREST

Feiring Angus Ranch and Ash Coulee Ranch is retaining one-third revenue sharing semen interest in every bull selling in this sale. Full possession and full salvage value sells on all bulls. Unless stated otherwise from the Auction Block. We also reserve the right to collect semen on any bull selling in this sale, at your convenience and our expense, to be used in our herds only.

Welcome Friends,

We would like to invite you to our 27th Annual Sale. Thank you to all past & future customers for showing interest & choosing us for your seed-stock needs. We have been truly blessed to carry on this legacy started by my Grandfather over 70 years ago!

Our focus has been the maternal Angus cow. Like everything you need a strong foundation. We believe we must challenge our cows in a true range environment. I do not believe in falsifying things just for a quick sale. We moved our calving date back to May 1st. Range calving our cows and heifers to prove calving ease, mothering ability, & to work with Mother Nature, not against her. Our cows are never lock-up in a feed-lot or fed a TMR ration. This has allowed us to graze into winter, usually mid- January we will start supplementing with hay, about the time the cows enter into their last trimester. We are exploring ways to feed our cows less, and have them forage more on their own for their needs even in winter. We pride ourselves in trying to be a low input ranch. To prove fertility we exposed our heifers for 45 days and cows for 60 days and select bulls out of cows that calve in the first 30 days of calving. The rest are sold as steers, only the top 1/3 are sold as bulls. With the herd Bulls turned out the end of July. The cows are out in pastures eating grass, yes we supplement with mineral & salt, but they are breed on what Mother Nature gave them or they are culled. No fall calving herd to fall into if they cannot cut it!

I know that popular/cutting edge and over fed cattle sell for more money! I've tried them, they did not work for me. Our cows we're getting bigger, calving ease, fertility, & longevity were going down, causing us to cull a lot more! So, I've have gone back to older proven Angus genetics. Yes, some of them date back to 50 years ago. But to me, they are more the sweet-spot (middle of road) genetics! With most ranchers labor is a problem and a cow that get it's done without extra inputs, & labor is the one I want. Maybe the best cows are the ones you never notice, cannot remember much about, but have raised a calf every year for 10 years are more. American farmers/ranchers have been selecting for more growth and performance testing for more than 50 years now! If we do not have enough growth by now, it's not because we did not select for it, it's because our true range conditions cannot express it without supplements. There are many seed-stock operations showing how pounds pay but ask them how much of the time their cattle are being fed supplements! Most are just a feed-lot operation having a few acres of grass (rangeland) to take pictures for their Sale Catalog. Other than that they are being fed CORN! I believe that a cow was put on the earth to graze rangeland. That is too poor to farm & turn grass with sunshine into a food source for humans.

If we can be of any assistance to you in selecting genetics for your operation please let us know. We know how busy this time of year can be. If you cannot be at the sale, or watch and bid on DV Auction we would more than happy to help you with your purchases. Satisfaction guaranteed, or you do not own them, no question! If you come and look at the bulls prior to the sale, I will give you a \$100.00 off on every bull you buy from us, for letting us showing you our cattle and operation. I believe you'll be impressed on how our cattle perform in a true range setting. We look forward to seeing & hearing from you! Thank-you for taking the time to view our catalog and program.

GOD BLESS & GOD BLESS THE USA!

Doug & Ceylon Feiring Family



COMMERCIAL HEIFERS

General information on the commercial heifer offering:

- Heifers are penned by size and type.
- Heifers tag color indicates consignor, 1 through how many consigned.
- Heifers will be penned and displayed in uniform lots. Heifers will also sell with videos on TV's and not brought through the ring on sale day.
- Each pen will have consecutive numbers (tags) 1-20, 20-40, etc.

- Winning bidder has choice of 5 head or more, if they take 10 head they get the lowest numbers in pen (1-10), and then the bidding starts again on the remaining pen, or they can take the whole pen and have the option to take remaining heifers (pen or pens) by that consignor at their bid price.
- If you have questions please contact
Doug Feiring, 701-629-1912

65 COMMERCIAL HEIFERS

15 RED ANGUS & 50 BLACK HEIFERS

Feiring Angus Ranch

- Born April and May 2020
- Sired by Feiring reference sires and Feiring raised bulls.
- Bangs vaccinated and freeze branded
- Outstanding brood cow prospects. Optimum size and very uniform in length, volume and structural correctness.
- Weaned on grass hay until mid-January, then started on feed, 4 lbs. pellet per/day and free choice grass hay and haylage.

# OF HEAD	BUYER	PRICE
_____	_____	_____
_____	_____	_____
_____	_____	_____
_____	_____	_____
_____	_____	_____

70 COMMERCIAL HEIFERS

30 BLACK ANGUS HEIFERS & 40 BLACK BALDIES

Chuck & Roberta Ramberg and Katie Bearce

701-755-3419 / 701-629-1501

- Born March - May 2020
- Bangs vaccinated
- Freeze branded
- Breeding preg-guard shot
- Wintered on grass hay
- Docile and easy to manage heifers that will make excellent mothers.

# OF HEAD	BUYER	PRICE
_____	_____	_____
_____	_____	_____
_____	_____	_____
_____	_____	_____
_____	_____	_____

40 COMMERCIAL HEIFERS

40 BLACK ANGUS HEIFERS

John & Karen Halcrow / 701-390-4647

- Born April - May 2020
- Sired by top cut Ash Coulee Bulls
- Bangs vaccinated
- All shots given, ready to go
- Gentle replacements that will calve easy and make great cows

# OF HEAD	BUYER	PRICE
_____	_____	_____
_____	_____	_____
_____	_____	_____
_____	_____	_____
_____	_____	_____

A **RED GEMSTONE 91C LAD ET 1**

Tattoo: 178F | DOB: 5/28/18

RED OCC EASY RED
RED CALVO 91C
RED CALVO BAILEY 9X

Feddes Big Sky R9
RED TOP GRADE FANCY 169A
RED TG PEARL 170Y

RED OCC LINEBRED 801R
RED OCC VANESSA 829S
RED BB ROY 45S
RED BBBB 6540 BBRED 6840
BEIBER MAKE MIMI 7249
FEDDES LAKINA 310
RED TER-RON WINDERMERE 14
RED L4 PEARL 980M

178F is a Embryo born bull in Canada, added to bring OCC type cattle into Reds



RED GEMSTONE 91C LAD ET 1

B **RED EDIE CREEK EASY 93D**

Tattoo: 93D-RR | DOB: 03/05/14

RED OCC EASY RED
RED OCC EASY RED 868A
RED OCC VANESSA 797Y

RED CROWFOOT MOONSHINE 8081U
RED XO CROWFOOT BRNDINA 322A
RED CROWFOOT BRNDINA 6234S

RED OCC LINEBRED 801R
RED OCC VANESSA 829S
RED OCC RED ROCK 864U
RED OCC VANESSA 929T
CROWFOOT 6004S
RED CROWFOOT BRNDINA 6359S
RED CROWFOOT OLE'S OSCAR
RED CROWFOOT BRNDINA 2071M

A bull imported from Canada to inject OCC genetics in our Red angus herd.



RED OCC EASY RED 868A | SIRE

C **RED SVR HITCH 42C**

Tattoo: 42C | DOB: 03/15/15

RED ANCHOR 1 HITCH 38T
RED CLAY BANDIT 18X
RED GET-A-LONG EILEEN 749

RED SVR GANGSTER 14S
RED SVR MISS LARK 100X
RED SVR MISS LARK 68U

RED YY HITCH 514R
RED CROWFOOT STRETCH 4320P
RED BRYLOR PASQUALE 213P
RED FINELL EILEEN 17R
RED GEIS HI HO 180'04
RED DWAJO DUCHESS 75M
RED SVR KNIGHT 73P
SVR MISS LARK 57N

42C was imported from Canada. He's a long spined, deep wide based & muscular with a great hind quarter, great foot, calving ease, dark red, & disposition.



RED SVR HITCH 42C

D **O C C Diplomat 869D**

Reg. No. 18827254 | Tattoo: 869D | DOB: 10/18/16

O C C Paxton 730P
O C C You're Exact 763Y
O C C Pollyanna 944H

O C C Emblazon 854E
O C C Revolution Rose 807Z
O C C Revolution Rose 743K

O C C Focus 813F
O C C Blackbird 736K
O C C Anchor 771A
O C C Pollyanna 979F
D H D Traveler 6807
Dixie Erica of C H 1019
O C C Anchor 771A
O C C Revolution Rose 751E

CED	BW	WW	YW	YH	SC	DOC	Milk	CW	Marb	RE	FAT
11	.5	34	54				16	I+0	I+.14	I+.29	I+0

869D is a Royal bred OCC bull, covering all the bases: longevity, soundness, calving ease, disposition, & trouble free genetics that just get-r-done!



OCC DIPLOMAT 869D



SINCLAIR ROLLIN COAL 6K21



E

Sinclair Rollin Coal 6K21

Reg. No. 18487763 | Tattoo: 6K21 | DOB: 2/27/16

Sinclair Entrepreneur 8R101
Sinclair Broker 3RC33
 Sinclair Lady Ida 8XV12 C52
 N Bar Emulation EXT
Sinclair Donna 3X21 322
 Brooks Donna 322

R R Rito 707
 N Bar Kinochtry Beauty Z1925
 N Bar Emulation Ext V722
 N Bar Lady Ida Z1453
 Emulation N Bar 5522
 N Bar Primrose 2424
 D H D Traveler 6807
 A A R Donna 1853

CED	BW	WW	YW	YH	SC	DOC	Milk	CW	Marb	RE	FAT
5	-.4	31	53		.50	-5	23	17	.58	.29	.018

6K12 is natural son of the famous Lady Lda 70C7 and granddam 7V19, Both donor cows for Sinclair, 6K12 was her 12th natural calf, at that time her average BW was 74 lbs., 205 WW ratio was 105, and had a 369 days calving interval.

F

O C C Dodge 678D

Reg. No. 19067880 | Tattoo: 678D | DOB: 3/20/16

O C C Practical 841P
O C C Unbelievable 851U
 O C C Pollyanna 944H
 O C C Missing Link 830M
O C C Pollyanna 613B
 O C C Pollyanna 944H

O C C Focus 813F
 O C C Juanada 968G
 O C C Anchor 771A
 O C C Pollyanna 979F
 O C C Headliner 661H
 O C C Dixie Erica 946K
 O C C Anchor 771A
 O C C Pollyanna 979F

CED	BW	WW	YW	YH	SC	DOC	Milk	CW	Marb	RE	FAT
9	.5	33	57				21	4	.10	.38	.014

678D is linebred son of the OCC Pollyanna 944H, one of OCC's flush cows that produced for 18 years. Lots of longevity bred in.

G

EDIE CREEK TITAN 75D

Reg. No. | Tattoo: 75D-B16 | DOB: 5/8/16

O C C Great Plains 943G
MH Titan 752
 MH Melisa 357
 O C C LEGACY 839L
EDIE CREEK 839L CAROLINE 48W
 EDIE CREEK CAROLINE 10M

N Bar Emulation EXT
 Dixie Erica of C H 1019
 O C C Homer 650H
 MH Melisa 1147
 O C C ECHELON 857E
 O C C DIXIE ERICA 960E
 KMA FOURTRAX 5134
 2J CAROLINE 10K

75D sons will produce low input cattle, that can thrive on forage, have good feet, udders, and continue to produce for 10-12 years.

H

Citadel of Saddle Butte 47/15

Reg. No. 18335228 | Tattoo: 547 | DOB: 2/15/15

Betro of Classlochie
Dunlouse Jipse Earl E161
 Dunlouse Jipsey Clova Co95
 Jasnic Erica of Kempsons
Dunlouse CBlossom Erin E171
 Cherry Bee W9 of Champagne

Rockie of Woodveiw
 Bethrothed 19 of Classlochie
 Berbardo of Classlochie
 Cannahars Jipsey Yoko Y485
 Phineus of Cairnfield
 Jasmine Erica of Kempsons
 Evan Of Champagne
 Cherry Bee of Champagne

CED	BW	WW	YW	YH	SC	DOC	Milk	CW	Marb	RE	FAT
3	-.4	7	3				20	-12	-.03	0	.015

547 was a embryos imported from Scotland by Sinclair Cattle Co. 547 was part of the plan to develop the old Aberdeen Angus cow back into the US. 547 is closely related to the proven genetics that started the Angus breed 150 years ago.



O C C DODGE 678D



O C C GREAT PLAINS 943G | GRANDSIRE



DUNLOUSE JIPSE EARL E161 | SIRE

FairView Bardolene 4235

Reg. No. 18164860 | Tattoo: 4235 | DOB: 07/25/14

Battle River Bardolene

Grassy Lanes Bardolene 26Z

Rosebud of Grassy Lanes 26M

Bar Lad of Grassy Lanes 70M

Linda Lou of Grassy Lanes

Linda Lou of Grassy Lanes29H

Grassy Lanes Bardolene 35M

Battle River Suellen 11S

Iosegun Bar Lad 37J

Rosebud of Grassy Lanes 26Z

Iosegun Bar Lad 37J

Betsy of Grassy Lanes 70C

LSF Lancelot 16F

Linda Lou of Grassy Lanes35F

CED	BW	WW	YW	YH	SC	DOC	Milk	CW	Marb	RE	FAT
2	.6	31	46	0	-.04	20	15	18	.23	.30	.006

4235 is old Bardolene breeding dating back to 1960 straight from Canada. The foot structure, muscle, maternal, masculinity, carcass and hair coat put this outcross sire the top of the list

**FAIRVIEW BARDOLENE 4235****O C C Conquest 660C**

Reg. No. 18736710 | Tattoo: 660C | DOB: 03/16/15

O C C Focus 813F

O C C Sentinel 714S

O C C Blackcap 804M

O C C Anchor 771A

O C C Pollyanna 944H

O C C Pollyanna 979F

Basin Rainmaker 654X

Dixie Erica of C H 1019

O C C Echelon 857E

O C C Blackcap 872K

D H D Traveler 6807

O C C Juanada 709V

O C C Bonanza 880B

Pollyanna of R R 5205

CED	BW	WW	YW	YH	SC	DOC	Milk	CW	Marb	RE	FAT
4	1.5	46	81	-.2	.22	I+5	17	18	.24	.21	.018

660C is also a son of the great 944H cow, Top donor cow For OCC that produced till 18 years of age, longevity at its best, if you study OCC sale catalog you will see that his cow shows up in many of the offering.

**O C C CONQUEST 660C****SVR Ballot Black 7117**

Reg. No. 19263575 | Tattoo: 7117 | DOB: 12/8/54

Ballot of Belladrum

Octoraro Ballot STO 6

Octoraro Gammer 203

Emulation N Bar 5522

K C F Miss 5522 D3

C S U Miss Traveler 0138

Paragon of Haymount

Bedelia Maid of Belladrum

Rito 054 G D A R

Octoraro Gammer 305

Emulation 31

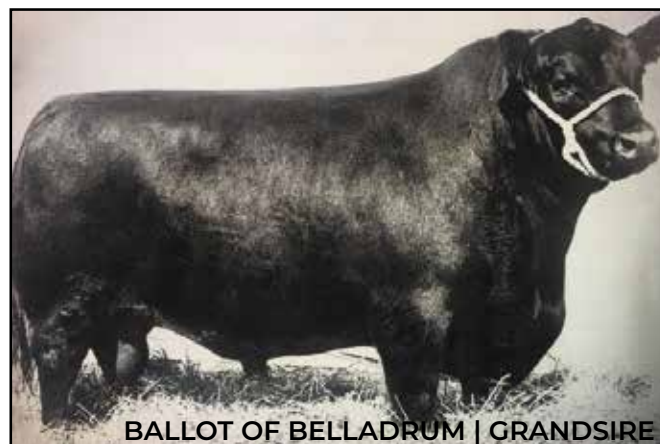
Ankony 8F78 Lass 8F275

Q A S Traveler 23-4

C S U MS Landmark 4117

CED	BW	WW	YW	YH	SC	DOC	Milk	CW	Marb	RE	FAT
6	1.0	26	42	I-1	I-.08	9	16	I+6	I+.32	I+.09	I+.026

Sires J Grandsire was imported to the USA in the 50's, Belladrum was one of the all-time greats bulls in the Angus breed, born 12/8/1954

**BALLOT OF BELLADRUM | GRANDSIRE****Pinebank Southeast 117d**

Reg. No. 19339138 | Tattoo: P17D | DOB: 11/21/16

Pinebank Waigroup 45/02

Pinebank Waigroup 152/04

Pinebank Waigroup 86/96

Pinebank 1/06

Pinebank 25/08

Pinebank Waigroup 125/03

Pinebank Waigroup 3/00

Pinebank Waigroup 75/99

Shalom 486/93

Pinebank Waig 61/93

Hingaia 469

Pinebank Waigroup 62/99

Pinebank Waigroup 2/01

Pinebank Waigroup 5/98

CED	BW	WW	YW	YH	SC	DOC	Milk	CW	Marb	RE	FAT
1	2.6	36	60				14				

P17D is an imported embryo from New Zealand born in the USA. Pinebank Waigroup was formed in 1967, a group of 4 breeders closed their herds with a breeding objective to select Angus cattle for fertility, calving ease, low BW, WW, YW, Scanned ribeyes & IMF, in a total grass environment where the cattle follow the sheep!



ANGUS YEARLING BULLS

LOTS 1-19

*CALVING EASE SCORES

- One Star Use on mature cows
- Two Stars Use on three-year-old & older cows
- Three Stars Maybe use on heifers, but some may need assistance
- Four Stars Most calving ease; very little if any assistance

Lot
1

Feirings Pinebank 030

Reg. No. 626201295 Tattoo: 030-B20 DOB: 04/27/20

Pinebank Waigroup 152/04 Pinebank Waigroup 45/02

Pinebank Southeast 117d Pinebank Waigroup 86/96

Pinebank 25/08 Pinebank 1/06

 Pinebank Waigroup 125/03

Citadel of Saddle Butte 47/15 Dunlouse Jipsey Earl E161

Feirings Ms Princess F47 Dunlouse CBlossom Erin E171

Feirings Ms Princess D50 O C C Zodiak 616Z

 Feirings Ms Princess Z51

BW	205 Day Wt	Dam NR	Adj 365 Wt	Gain	WDA	Frame	Act Sc
82	751		1321	3.56	3.41	5.56	37
BW	WW	Milk	Yw	Cw	Marb	Rea	Fat

Calving ease **, Cow wt, 1110, DNA scores: DOC 7, HRP 7, RFI 7, TEND 7, F



LOT 1

Lot
2

Feirings Bardolene 059

Reg. No. 626201318 Tattoo: 059-B20 DOB: 05/04/20

Grassy Lanes Bardolene 26Z Battle River Bardolene

FairView Bardolene 4235 Rosebud of Grassy Lanes 26M

Linda Lou of Grassy Lanes Bar Lad of Grassy Lanes 70M

 Linda Lou of Grassy Lanes 29H

O C C Ultima 636U O C C Great Plains 943G

Feirings Ms Dixie Y72 O C C Pollyanna 944H

Feirings Ms Thunder W36 O C C Thunder 612T

 Feirings Ms Fortune 342/T51

BW	205 Day Wt	Dam NR	Adj 365 Wt	Gain	WDA	Frame	Act Sc
80	595		1312	4.48	3.53	5.42	36
BW	WW	Milk	Yw	Cw	Marb	Rea	Fat

Calving ease **, Cow wt. 1460, DNA scores CED 7, HRP 7, RFI 7, TEND 10, M



LOT 2

Lot
3

Feirings Conquest 029

Reg. No. BR625737771 Tattoo: 029-B20 DOB: 04/27/20

O C C Sentinel 714S O C C Focus 813F

O C C Conquest 660C O C C Blackcap 804M

O C C Pollyanna 944H O C C Anchor 771A

 O C C Pollyanna 979F

FCC Mt Time 2103 Sinclair Mt Time 4P88

Feirings Ms Dixie D10 DR Mabel 507

Feirings Ms Dixie B14 FCC X-tra 469X

 Feirings Ms Thunder W36

BW	205 Day Wt	Dam NR	Adj 365 Wt	Gain	WDA	Frame	Act Sc
80	702		1279	3.00	3.41	5.00	32
BW	WW	Milk	Yw	Cw	Marb	Rea	Fat

Calving ease ***, Cow wt. 1340, DNA scores CED 7, DOC 7, Milk 7, RFI 7 TEN



LOT 3

lot
4

Feirings Pinebank 075

Reg. No. 626201333 Tattoo: 075-B20 DOB: 05/08/20
 Pinebank Waigroup 152/04 Pinebank Waigroup 45/02
 Pinebank Waigroup 86/96
Pinebank Southeast 117d Pinebank 1/06
 Pinebank 25/08 Pinebank Waigroup 125/03
 FairView Bardolene 4235 Grassy Lanes Bardolene 26Z
Feirings Ms Dixie F94 Linda Lou of Grassy Lanes
 Feirings Ms Dixie B54 O C C X-cursion 858X
 Feiring Ms Dixie Y57

BW	205 Day Wt	Dam NR	Adj 365 Wt	Gain	WDA	Frame	Act Sc
82	733		1250	3.23	3.27	4.63	32
BW	WW	Milk	Yw	Cw	Marb	Rea	Fat

Calving ease ***, Cow wt. 1020, DNA Scores: DOC 7, HRP 7, RFI 8, TEND 7, F



LOT 4

lot
5

Feirings Rollin Coal 007

Reg. No. 626201266 Tattoo: 007-B20 DOB: 04/20/20
 Sinclair Broker 3RC33 Sinclair Entrepreneur 8R101
Sinclair Rollin Coal 6K21 Sinclair Lady Ida 8XV12 C52
 Sinclair Lady Lda 5PV38 B154 Sinclair Net Present Value
 N Bar Lady Ida X2912
 Citadel of Saddle Butte47/15 Dunlouse Jipsey Earl E161
Feirings Ms Heroine E07 Dunlouse CBlossom Erin E171
 Feirings Ms Heroine C11 Citadel of Saddle Butte47/15
 Feirings Ms Heroine U117

BW	205 Day Wt	Dam NR	Adj 365 Wt	Gain	WDA	Frame	Act Sc
74	690		1245	3.47	3.27	5.11	34
BW	WW	Milk	Yw	Cw	Marb	Rea	Fat

Calving ease ***, Cow Wt. 1104, DNA Tenderness score 9, WW 7, YW 7



LOT 5

lot
6

Feirings Conquest 072

Reg. No. 625737798 Tattoo: 072-B20 DOB: 05/06/20
 Dunlouse Jipsey Earl E161 Betro of Classlochie
Citadel of Saddle Butte47/15 Dunlouse Jipsey Clova C095
 Dunlouse CBlossom Erin E171 Jasnic Erica of Kempsons
 Cherry Bee W9 of Champagne
 O C C Missing Link 830M
 O C C Wider 867W O C C Dixie Erica 903E
Feirings Ms Eiffileen Z49 New Horizon 2000
 Feirings Ms Horizon P71 Feirings Miss Quantum L21

BW	205 Day Wt	Dam NR	Adj 365 Wt	Gain	WDA	Frame	Act Sc
84	616		1211	3.72	3.32	4.70	36
BW	WW	Milk	Yw	Cw	Marb	Rea	Fat

Calving ease ***, Cow wt. 1510



LOT 6

lot
7

Feirings Dodge 017

Reg. No. 626201279 Tattoo: 017-B20 DOB: 04/24/20
 O C C Unbelievable 851U O C C Practical 841P
O C C Dodge 678D O C C Pollyanna 944H
 O C C Pollyanna 613B O C C Missing Link 830M
 O C C Pollyanna 944H
 HRA TRAVELER 313 Q A S Traveler 23-4
Feirings Ms Blackbird D143 H R A LASSIE 34
 Feirings Ms Tom Boy W67 Figure 8 Angus Tom Boy 509R
 Feirings Rito Rito P104

BW	205 Day Wt	Dam NR	Adj 365 Wt	Gain	WDA	Frame	Act Sc
80	728		1218	3.06	3.31	5.67	34
BW	WW	Milk	Yw	Cw	Marb	Rea	Fat

Calving ease***, Cow wt. 1390, DNA scores RFI 10, WW 6, YW 6



LOT 7

lot
8

Feirings Conquest 079

Reg. No. 626201338 Tattoo: 079-B20 DOB: 05/08/20

O C C Sentinel 714S

O C C Focus 813F

O C C Conquest 660C

O C C Blackcap 804M

O C C Pollyanna 944H

O C C Anchor 771A

O C C Zodiac 616Z

O C C Pollyanna 979F

Feirings Ms Effileen D80

O C C Jet Stream 825J

Feirings Ms Effileen S60

O C C Juanada 826R

Pinebank Waigroup 41/97

Feirings Miss Valentino J19

BW	205 Day Wt	Dam NR	Adj 365 Wt	Gain	WDA	Frame	Act Sc
82	757		1205	2.80	3.33	4.98	36
BW	WW	Milk	Yw	Cw	Marb	Rea	Fat

Calving ease ***, Cow w. 1335, DNA Scores: CED 7, RFI 7, FAT 7



LOT 8

lot
9

Feirings Diplomat 024

Reg. No. 626201286 Tattoo: 024-B20 DOB: 04/26/20

O C C You're Exact 763Y

O C C Paxton 730P

O C C Diplomat 869D

O C C Pollyanna 944H

O C C Revolution Rose 807Z

O C C Emblazon 854E

FairView Manderson 3130

O C C Revolution Rose 743K

Feirings Ms Sarah E12

Redland Manderson 2038

Feirings Ms Sarah Z45

Pine Coulee Entense U426

O C C Ultima 636U

Feirings Ms Sarah S73

BW	205 Day Wt	Dam NR	Adj 365 Wt	Gain	WDA	Frame	Act Sc
68	669		1203	3.34	3.18	4.80	34
BW	WW	Milk	Yw	Cw	Marb	Rea	Fat

Calving ease **, Cow wt. 1200, DNA scores DOC 7, RFI 8, TEND 8,



LOT 9

lot
10

Feirings Conquest 060

Reg. No. 626201319 Tattoo: 060-B20 DOB: 05/04/20

O C C Sentinel 714S

O C C Focus 813F

O C C Conquest 660C

O C C Blackcap 804M

O C C Pollyanna 944H

O C C Anchor 771A

FCC X-tra 469X

O C C Pollyanna 979F

Feirings Primrose Erica Z70

Papa Forte 1921

Feirings Primrose Erica W18

FCC Juanada 855S

Koupal PATRIOT 7175

Feirings Ms Rito16

BW	205 Day Wt	Dam NR	Adj 365 Wt	Gain	WDA	Frame	Act Sc
82	665		1195	3.31	3.29	5.07	37
BW	WW	Milk	Yw	Cw	Marb	Rea	Fat

Calving ease **, Cow wt. 1490, RFI 8, TEND 8, MARB 7, REA 8, HCW 7



LOT 10

OUR BULL GUARANTEE

At Feiring Angus Ranch we have always been prepared to guarantee our bulls. The guarantee is structured to cover fertility and soundness. All bulls selling have passed a breeding soundness exam by a licensed veterinarian and screened for soundness.

We will guarantee bulls from the date of purchase against loss of fertility or soundness not caused by physical damage. This is a guarantee to protect the buyer against any problems with bad feed, hooves, structural problems and/or the inability to settle a cow. When breeding for 3 years pro-rated in the form of a credit in the next available Feiring Angus Ranch sale, or if we have a satisfactory replacement on hand for a trade or a partial credit on a different bull. This guarantee does not cover injuries such as stifle, broken bones, broken penis, bruises from fighting, foot rot, frozen or bruised testicles, poor or over condition, unsound management practices, or disease. The guarantee only covers

the value of the bull, not the loss of production. A veterinary certificate is required to warrant this guarantee and we reserve the right of a second opinion. Any associated costs are that of the purchaser. Sound management practices are expected (fertility testing annually and checks that bulls are working while mating are mandatory).

Purchaser can extend their protection further by insuring their bull(s) for transit and full mortality risk. Being death by accident, disease, and including the peril loss of use by accident. This coverage will be at the buyer's cost.

Your cost of the bull, minus the salvage value will be covered by a 3 year pro-rate guarantee in the form of a credit in the next available Feiring Angus Ranch Bull Sale, or if we have a satisfactory replacement on hand for a trade or a partial credit on a different bull. This means that if the bull breaks down:

- During the first mating, 100% of the credit applies
- After the first or during the second mating, 67% of the credit applies
- After the second or during the third mating, 33% of the credit applies
- After the third, one of the credit applies

lot 11 Feirings Pinebank 037

Reg. No. 626201299 Tattoo: 037-B20 DOB: 04/28/20
 Pinebank Waigroup 152/04 Pinebank Waigroup 45/02
 Pinebank Waigroup 86/96
Pinebank Southeast 117d Pinebank 1/06
 Pinebank 25/08 Pinebank Waigroup 125/03
 Q A S Traveler 23-4
 H R A LASSIE 34
Feirings Ms Karma F63 O C C X-cursion 858X
 Feirings Ms Karama B22 Feirings Ms Karama U08

BW	205 Day Wt	Dam NR	Adj 365 Wt	Gain	WDA	Frame	Act Sc
82	679		1175	3.10	3.02	4.73	35
BW	WW	Milk	Yw	Cw	Marb	Rea	Fat

Calving ease ***, Cow wt. 1120, DNA scores: HRP 7, RFI 8, TEND 7, FAT 7



lot 12 Feirings Conquest 025

Reg. No. 626201287 Tattoo: 025-B20 DOB: 04/26/20
 O C C Sentinel 714S O C C Focus 813F
 O C C Blackcap 804M
O C C Conquest 660C O C C Anchor 771A
 O C C Pollyanna 944H O C C Pollyanna 979F
 DDA Ledger 69D
 MH Bonnie Belle 332
Feirings Ms Emblynette W11 Forever Fortune L 1
 Feirings Miss F Fortune 627 Feirings Miss Stacker 121

BW	205 Day Wt	Dam NR	Adj 365 Wt	Gain	WDA	Frame	Act Sc
88	599	5-97	1167	3.55	3.09	4.70	33
BW	WW	Milk	Yw	Cw	Marb	Rea	Fat

Calving ease ***, Cow wt. 1495, DNA scores RFI 7, TEND 9,



LOT 12

lot 13 Feirings Conquest 052

Reg. No. 626201313 Tattoo: 052-B20 DOB: 05/02/20
 O C C Sentinel 714S O C C Focus 813F
 O C C Blackcap 804M
O C C Conquest 660C O C C Anchor 771A
 O C C Pollyanna 944H O C C Pollyanna 979F
 O C C Jet Stream 825J
 O C C Juanada 826R
Feirings Ms Belle C48 Koupal PATRIOT 7175
 Feirings Ms Belle W61 Feirings Ms Horizon S20

BW	205 Day Wt	Dam NR	Adj 365 Wt	Gain	WDA	Frame	Act Sc
74	607		1151	3.40	3.14	4.89	35
BW	WW	Milk	Yw	Cw	Marb	Rea	Fat

Calving ease ***, Cow wt. 1410, DNA scores: CED 7, MILK 7, ADG 7, RFI 7, F



LOT 13

lot 14 Feirings Diplomat 004

Reg. No. 626201262 Tattoo: 004-B20 DOB: 04/19/20
 O C C You're Exact 763Y O C C Paxton 730P
 O C C Pollyanna 944H
O C C Diplomat 869D O C C Emblazon 854E
 O C C Revolution Rose 807Z O C C Revolution Rose 743K
 Akers Missing Link 9603
 O C C Erica Lassie 815T
 FCC X-tra 469X
Feirings Ms Dixie E54 Feirings Ms Thunder W36
 Feirings Ms Dixie B14

BW	205 Day Wt	Dam NR	Adj 365 Wt	Gain	WDA	Frame	Act Sc
72	669	2-98	1135	2.91	2.99	3.85	34
BW	WW	Milk	Yw	Cw	Marb	Rea	Fat

Calving ease***, Cow wt, 1205, DNA RFI Score 7



LOT 14

lot
15

Feirings Diolomat 006

Reg. No. 626201264 Tattoo: 006-B20 DOB: 04/20/20

O C C You're Exact 763Y O C C Paxton 730P
O C C Pollyanna 944H
O C C Diplomat 869D O C C Emblazon 854E
O C C Revolution Rose 807Z O C C Revolution Rose 743K
FairView Bardolene 4235 Grassy Lanes Bardolene 26Z
Linda Lou of Grassy Lanes
Feirings Ms Molly E107 O C C Ultima 636U
Feirings Ms Molly B36 Feirings Ms Molly W24

BW	205 Day Wt	Dam NR	Adj 365 Wt	Gain	WDA	Frame	Act Sc
86	710		1131	2.63	3.02	4.61	32
BW	WW	Milk	Yw	Cw	Marb	Rea	Fat

Calving ease ***, Cow wt 1305,



LOT 15

lot
16

Feirings Conquest 043

Reg. No. 626201301 Tattoo: 043-B20 DOB: 04/29/20

O C C Sentinel 714S O C C Focus 813F
O C C Blackcap 804M
O C C Conquest 660C O C C Anchor 771A
O C C Pollyanna 944H O C C Pollyanna 979F
O C C X-cursion 858X O C C Focus 813F
O C C Blackcap 872K
Feirings Ms Emblynette C14 O C C Ultima 636U
Feirings Ms Emblynette Z21 Feirings Miss Valentino J17

BW	205 Day Wt	Dam NR	Adj 365 Wt	Gain	WDA	Frame	Act Sc
78	595		1128	3.33	3.07	4.49	32
BW	WW	Milk	Yw	Cw	Marb	Rea	Fat

Calving ease **** Cow wt. 1490, DNA scores: CED 8, RFI 8, TEND 9, FAT 9

lot
19

Feirings Ballot 066

Reg. No. 626201324 Tattoo: 066-B20 DOB: 05/05/20

Octoraro Ballot STO 6 Ballot of Belladrum
Octoraro Gammer 203
SVR Ballot Black 7117 Emulation N Bar 5522
K C F Miss 5522 D3 C S U Miss Traveler 0138
Citadel of Saddle Butte 47/15 Dunlouse Jipsey Earl E161
Dunlouse CBlossom Erin E171
Feirings Ms Jeanne F78 O C C Ultima 636U
Feirings Ms Jeanne A20 Feirings Ms JEANNE W68

BW	205 Day Wt	Dam NR	Adj 365 Wt	Gain	WDA	Frame	Act Sc
82	709		1115	2.54	2.92	4.83	35
BW	WW	Milk	Yw	Cw	Marb	Rea	Fat

Calving ease ****, Cow wt. 1095, DNA scores: CED 8, DOC 7, RFI 7, FAT 8

lot
17

Feirings Diplomat 021

Reg. No. 626201284 Tattoo: 021-B20 DOB: 04/26/20

O C C You're Exact 763Y O C C Paxton 730P
O C C Pollyanna 944H
O C C Diplomat 869D O C C Emblazon 854E
O C C Revolution Rose 807Z O C C Revolution Rose 743K
FairView Manderson 3130 Redland Manderson 2038
Pine Coulee Entense U426
Feirings Ms Emblynette E09 O C C Zodiak 616Z
Feirings Ms Emblynette C102 Feirings Ms Emblynette Y59

BW	205 Day Wt	Dam NR	Adj 365 Wt	Gain	WDA	Frame	Act Sc
84	685		1127	2.76	3.01	4.80	35
BW	WW	Milk	Yw	Cw	Marb	Rea	Fat

Calving ease **, Cow wt. 1285, DNA scores BW 7, RFI 7, REA 7



LOT 17

lot
18

Feirings Pinebank 009

Reg. No. 626201269 Tattoo: 009-B20 DOB: 04/21/20

Pinebank Waigroup 152/04 Pinebank Waigroup 45/02
Pinebank Waigroup 86/96
Pinebank Southeast 117d Pinebank 1/06
Pinebank 25/08 Pinebank Waigroup 125/03
Grassy Lanes Bardolene 26Z
FairView Bardolene 4235 Linda Lou of Grassy Lanes
O C C Ultima 636U
Feirings Ms Ituna F93 Feirings Ms Ituna U07
Feirings Ms Ituna X06

BW	205 Day Wt	Dam NR	Adj 365 Wt	Gain	WDA	Frame	Act Sc
66	615		1121	3.16	2.84	4.13	35
BW	WW	Milk	Yw	Cw	Marb	Rea	Fat

Calving ease ****, Cow wt, 980, DNA score CED 7, FAT 7



lot
20

Feirings Conquest 027

Reg. No. 626201290 Tattoo: 027-B20 DOB: 04/26/20

O C C Sentinel 714S O C C Focus 813F
O C C Blackcap 804M
O C C Anchor 771A
O C C Pollyanna 979F
O C C Jet Stream 825J
O C C Juanada 826R
O C C Wider 867W

O C C Conquest 660C
O C C Pollyanna 944H

O C C Zodiac 616Z

Feirings Ms Emblynette C102
Feirings Ms Emblynette Y59

Feirings Ms Thunder W16

BW	205 Day Wt	Dam NR	Adj 365 Wt	Gain	WDA	Frame	Act Sc
86	617		1110	3.08	3.03	4.55	34
BW	WW	Milk	Yw	Cw	Marb	Rea	Fat

Calving ease **, Cow wt. 1435, DNA scores BW 7, RFI 8,



RED ANGUS TWO YEAR OLD BULLS LOTS 21-24

**WE DO NOT
INHERIT THE LAND
FROM OUR ANCESTORS,
WE BORROW IT
FROM OUR CHILDREN**

lot
21

Feirings EASY RED 921

Reg. No. 625737743 Tattoo: 921-B19 DOB: 04/27/19

RED OCC EASY RED 868A RED OCC EASY RED RA
RED OCC VANESSA 797Y
RED EDIE CREEK EASY 93D RED CROWFOOT MOONSHINE 8
RED XO CROWFOOT BRNDINA 322A RED CROWFOOT BRNDINA 62
A107 BA BECKTON EPIC R397 K
1140 BA

B FEIRINGS Ms RED D20 BECKTON NEBULA X188 J3
B FEIRING Ms RED Z113 B Feirings Ms Red Z113

BW	205 Day Wt	Dam NR	Adj 365 Wt	Gain	WDA	Frame	Act Sc
74	650		1096	2.79	2.87	5.27	32
BW	WW	Milk	Yw	Cw	Marb	Rea	Fat

Calving ease ***, Dam wt. 1270, DNA scores YW 7, HCW 7,

lot
22

Feirings EASY RED 940

Reg. No. 625737744 Tattoo: 940-B19 DOB: 05/01/19

RED OCC EASY RED 868A RED OCC EASY RED RA
RED OCC VANESSA 797Y
RED EDIE CREEK EASY 93D RED CROWFOOT MOONSHINE 8
RED XO CROWFOOT BRNDINA 322A RED CROWFOOT BRNDINA 62
FEDDES OSCAR X36 RED CROWFOOT OLE'S OSCA
Feddies Blockana 848

Feirings RED VERNICE C40 BECKTON EPIC R350 K
BECKTON VERNICE W161 E BECKTON VERNICE R416 EP

BW	205 Day Wt	Dam NR	Adj 365 Wt	Gain	WDA	Frame	Act Sc
66	682	3-94	1052	2.31	2.90		34
BW	WW	Milk	Yw	Cw	Marb	Rea	Fat

Calving ease ****, Cow wt. 1280, DNA scores: CED 7, RFI 7, MILK 7, TEND 7

lot
23

Feirings EASY RED 916

Reg. No. 625737739 Tattoo: 916-B19 DOB: 04/24/19

RED OCC EASY RED 868A RED OCC EASY RED RA
RED OCC VANESSA 797Y
RED EDIE CREEK EASY 93D RED CROWFOOT MOONSHINE 8
RED XO CROWFOOT BRNDINA 322A RED CROWFOOT BRNDINA 62
A107 BA BECKTON EPIC R397 K
1140 BA

Feirings RED MINOLA C07 FEDDES OSCAR X36
Feirings RED MINOLA Z40 BECKTON MINOLA X135 H

BW	205 Day Wt	Dam NR	Adj 365 Wt	Gain	WDA	Frame	Act Sc
68	652		1018	2.29	2.83		34
BW	WW	Milk	Yw	Cw	Marb	Rea	Fat

Calving ease ***, Cow wt. 1326, DNA scores: DOC 7, TEND 9, FAT 7, ADG 7,

lot
24

Feirings REDEPIC 948

Reg. No. 625737747 Tattoo: 948-B19 DOB: 05/04/19

AXTELL EPIC 1011 BECKTON EPIC W690 C4
BECKTON ROSE P011 EP
AXTELL EPIC 4928 BJR GAMBLER 027
AXTELL SYRINGA 03-928 AXTELL SYRINGA 627-03
FEDDES OSCAR X36 RED CROWFOOT OLE'S OSCA
Feddies Blockana 848

Feirings RED MS Mell Z77 Feirings RED M 838U

BW	205 Day Wt	Dam NR	Adj 365 Wt	Gain	WDA	Frame	Act Sc
62	640		941	1.88	2.69	4.38	29
BW	WW	Milk	Yw	Cw	Marb	Rea	Fat

Calving easy ****, Cow wt. 1380,

RED ANGUS YEARLING BULLS

LOTS 25-37

THE COW
WAS PUT ON THIS EARTH
TO FUNCTION AS A
GRAZING ANIMAL

lot
25

Feirings RED EASY 010

Reg. No. 626201271 Tattoo: 010-B20 DOB: 04/21/20

RED CALVO 91C

RED OCC EASY RED

RED GEMSTONE 91C LAD ET 178F

RED CALVO BAILEY 9X

RED TOP GRADE FANCY 169A

Feddes Big Sky R9

RED TG PEARL 170Y

BECKTON CLIFFTOP A073 C4

BECKTON CLIFFTOP W602 E3

AXTELL RUBY 706-704

BECKTON EOLA T005 CT

AXTELL RUBY 706

BJR GAMBLER 027

FOSTER RUBY 4121

BW	205 Day Wt	Dam NR	Adj 365 Wt	Gain	WDA	Frame	Act Sc
70	694	1-105	1272	3.61	3.34	5.48	34
BW	WW	Milk	Yw	Cw	Marb	Rea	Fat

Calving ease ****, Cow wt. 1210, DNA scores CED7, ADG 7, REA 7, HCW 7, W



LOT 25

lot
26

Feirings RED HITCH 061

Reg. No. 626201320 Tattoo: 061-B20 DOB: 05/04/20

RED CLAY BANDIT 18X

RED ANCHOR 1 HITCH 38T

RED SVR HITCH 42C

RED GET-A-LONG EILEEN 749

RED SVR MISS LARK 100X

RED SVR GANGSTER 14S

RED SVR MISS LARK 68U

FEDDES OSCAR X36

RED CROWFOOT OLE'S OSCA

Feddes Blockana 848

BW	205 Day Wt	Dam NR	Adj 365 Wt	Gain	WDA	Frame	Act Sc
72	692	4-103	1201	3.18	3.32	5.91	40
BW	WW	Milk	Yw	Cw	Marb	Rea	Fat

Calving ease ***, Cow wt. 1445, DNA scores RFI 7, TEND 7, MARB 9,



LOT 26

lot
27

B Feirings RED077

Reg. No. 626201336 Tattoo: 077-B20 DOB: 05/08/20

RED CALVO 91C

RED OCC EASY RED

RED GEMSTONE 91C LAD ET 178F

RED CALVO BAILEY 9X

RED TOP GRADE FANCY 169A

Feddes Big Sky R9

RED TG PEARL 170Y

A107 BA

BECKTON EPIC R397 K

1140 BA

B Feirings RED M D25

BECKTON NEBULA X188 J3

B Feirings RED M B76

B Feirings Ms Mell Z89

BW	205 Day Wt	Dam NR	Adj 365 Wt	Gain	WDA	Frame	Act Sc
84	659	3-102	1169	3.19	3.19	5.13	35
BW	WW	Milk	Yw	Cw	Marb	Rea	Fat

Calving ease ***



LOT 27

lot
28

B Feirings Red Hitch 020

Reg. No. BR624816361 Tattoo: 020-B20 DOB: 04/25/20

RED CLAY BANDIT 18X

RED ANCHOR 1 HITCH 38T

RED SVR HITCH 42C

RED GET-A-LONG EILEEN 749

RED SVR MISS LARK 100X

RED SVR GANGSTER 14S

RED SVR MISS LARK 68U

BECKTON NEBULA X188 J3

BECKTON NEBULA T269 E2

BECKTON COCA P843 JO

B Feirings RED Mell A80

B Feirings RED Mell Y05

B Feirings Red Mel 974W

BW	205 Day Wt	Dam NR	Adj 365 Wt	Gain	WDA	Frame	Act Sc
68	644		1167	3.26	3.15	5.00	35
BW	WW	Milk	Yw	Cw	Marb	Rea	Fat

Calving ease ****, Cow wt, 1370, DNA scores CED 8, STAY 7, RFI 7 TEND 10



LOT 28

lot
29

Feirings RED EASY 070

Reg. No. 626201328 Tattoo: 070-B20 DOB: 05/06/20

RED CALVO 91C

RED OCC EASY RED

RED GEMSTONE 91C LAD ET 178F

RED CALVO BAILEY 9X

RED TOP GRADE FANCY 169A

Feddes Big Sky R9

RED TG PEARL 170Y

RED SVR HITCH 42C

RED CLAY BANDIT 18X

B Feirings Ms RED F69

RED SVR MISS LARK 100X

B FEIRING Ms RED Z113

BECKTON NEBULA X188 J3

B Feirings Ms Red Z113

BW	205 Day Wt	Dam NR	Adj 365 Wt	Gain	WDA	Frame	Act Sc
84	667		1147	3.00	2.98	5.10	34
BW	WW	Milk	Yw	Cw	Marb	Rea	Fat

Calving ease ***, Cow wt. 1090, DNA scores: CED 7, ADG 8, TEND 7, WW 7, Y

lot
30

Feirings RED EASY 044

Reg. No. 626201303 Tattoo: 044-B20 DOB: 05/01/20

RED CALVO 91C

RED OCC EASY RED

RED GEMSTONE 91C LAD ET 178F

RED CALVO BAILEY 9X

RED TOP GRADE FANCY 169A

Feddes Big Sky R9

RED TG PEARL 170Y

AXTELL DOMINOR 4124

BECKTON DOMINOR T754 ZC

Feirings Ms RED F76

BECKTON BARMAID R124 CT

B FEIRINGS Ms RED D20

A107 BA

B FEIRING Ms RED Z113

BW	205 Day Wt	Dam NR	Adj 365 Wt	Gain	WDA	Frame	Act Sc
78	661		1125	2.90	2.91	4.77	34
BW	WW	Milk	Yw	Cw	Marb	Rea	Fat

Calving ease ****, Cow wt. 1045, DNA scores CED 8, ADG 7, MARB 7, WW 7 Y



LOT 30

lot
31

Feirings RED Hitch 071

Reg. No. 626201330 Tattoo: 071-B20 DOB: 05/06/20

RED CLAY BANDIT 18X

RED ANCHOR 1 HITCH 38T

RED SVR HITCH 42C

RED GET-A-LONG EILEEN 749

RED SVR MISS LARK 100X

RED SVR GANGSTER 14S

RED SVR MISS LARK 68U

A107 BA

BECKTON EPIC R397 K

Feirings Ms RED M C86

1140 BA

Feirings RED M Y81

FEDDES OSCAR X36

Feirings RED M 838U

BW	205 Day Wt	Dam NR	Adj 365 Wt	Gain	WDA	Frame	Act Sc
84	670		1115	2.78	3.10	5.10	35
BW	WW	Milk	Yw	Cw	Marb	Rea	Fat

Calving ease ***, Cow wt. 1485, DNA scores: CED 8, REA 8, FAT 8

**BREEDING CATTLE IS
NOTORIOUSLY DRIVEN BY FADS,
NOT BY FACTS, WE BELIEVE IN
PROVEN SCIENCE.**

lot
32

Feirings RED Hitch 046

Reg. No. 626201305 Tattoo: 046-B20 DOB: 04/30/20
 RED CLAY BANDIT 18X RED ANCHOR 1 HITCH 38T
RED SVR HITCH 42C RED GET-A-LONG EILEEN 749
 RED SVR MISS LARK 100X RED SVR GANGSTER 14S
 RED SVR MISS LARK 68U
 DDA Ledger 69D
 FCC Linebred 6118 MH Bonnie Belle 332
Feirings RED M Y41
 Feirng RED M 821U

BW	205 Day Wt	Dam NR	Adj 365 Wt	Gain	WDA	Frame	Act Sc
84	712	3-106	1114	2.51	3.11	5.01	34
BW	WW	Milk	Yw	Cw	Marb	Rea	Fat

Calving ease ****, Cow wt. 1330, DNA scores: CED 7, STAY 7, TEND 9, MAR



lot
33

Feirings RED HITCH 008

Reg. No. 626201267 Tattoo: 008-B20 DOB: 04/20/20
 RED CLAY BANDIT 18X RED ANCHOR 1 HITCH 38T
RED SVR HITCH 42C RED GET-A-LONG EILEEN 749
 RED SVR MISS LARK 100X RED SVR GANGSTER 14S
 RED SVR MISS LARK 68U
 RED CROWFOOT OLE'S OSCA
 FEDDES OSCAR X36 Feddes Blockana 848
Feirings RED VERNICE C40 BECKTON EPIC R350 K
 BECKTON VERNICE W161 E BECKTON VERNICE R416 EP

BW	205 Day Wt	Dam NR	Adj 365 Wt	Gain	WDA	Frame	Act Sc
68	622	3-94	1092	2.94	2.98	5.46	34
BW	WW	Milk	Yw	Cw	Marb	Rea	Fat

Calving ease ****, Cow Wt. 1462, DNA scores DOC 8, Tenderness 9



lot
34

B Feirings EASY RED 080

Reg. No. 626201340 Tattoo: 080-B20 DOB: 05/08/20
 RED CALVO 91C RED OCC EASY RED
RED GEMSTONE 91C LAD ET 178F RED CALVO BAILEY 9X
 RED TOP GRADE FANCY 169A Feddes Big Sky R9
 RED TG PEARL 170Y
 BECKTON DOMINOR T754 ZC
 AXTELL DOMINOR 4124 BECKTON BARMAID R124 CT
B Feirings Mella F97 A107 BA
 B Feirings Mella D41 B Feiring Mella Z41

BW	205 Day Wt	Dam NR	Adj 365 Wt	Gain	WDA	Frame	Act Sc
86	720		1253	3.33	3.27	5.47	34
BW	WW	Milk	Yw	Cw	Marb	Rea	Fat

Calving ease **, Cow wt. 1005, DNS scores: DOC 7, MARB 8, REA, HCW

**WHEN THE ELDERLY DIE,
 A LIBRARY IS LOST,
 AND VOLUMES OF WISDOM,
 AND KNOWLEDGE ARE GONE.**

lot
35

Feirings RED HITCH 0101

Reg. No. 626201349 Tattoo: 0101-B20 DOB: 05/12/20
 RED CLAY BANDIT 18X RED ANCHOR 1 HITCH 38T
RED SVR HITCH 42C RED GET-A-LONG EILEEN 749
 RED SVR MISS LARK 100X RED SVR GANGSTER 14S
 RED SVR MISS LARK 68U
 BECKTON EPIC R397 K
 A107 BA 1140 BA
Feirings RED ROSE C114 Beckton Nomad T 9A14
 Beckton Rose W145 N Beckton Rose R114 LN

BW	205 Day Wt	Dam NR	Adj 365 Wt	Gain	WDA	Frame	Act Sc
74	732	4-105	1153	2.63	3.23	6.37	38
BW	WW	Milk	Yw	Cw	Marb	Rea	Fat

Calving ease ****, CED 8, DOC 7, STAY 8, RFI 7, TEND 10, MARB 9, FAT 8



lot
36

Feirings RED HITCH 0105

Reg. No. 626201351 Tattoo: 0105-B20 DOB: 05/13/20

RED CLAY BANDIT 18X

RED ANCHOR 1 HITCH 38T

RED SVR HITCH 42C

RED GET-A-LONG EILEEN 749

RED SVR MISS LARK 100X

RED SVR GANGSTER 14S

RED SVR MISS LARK 68U

AXTELL DOMINOR 4124

BECKTON DOMINOR T754 ZC

Feirings LARKABA D22

BECKTON BARMAID R124 CT

Feirings RED LARKABA B82

A107 BA

Feirings RED LARKABA Y19

BW	205 Day Wt	Dam NR	Adj 365 Wt	Gain	WDA	Frame	Act Sc
74	632			3.00	3.10	5.00	34
BW	WW	Milk	Yw	Cw	Marb	Rea	Fat

Calving ease ****, Cow wt. 1070, DNA scores: TEND 9, MARB 7, FAT 8,



LOT 36

lot
37

Feirings EASY RED 0112

Reg. No. 626201355 Tattoo: 0112-B20 DOB: 05/16/20

RED CALVO 91C

RED OCC EASY RED

RED GEMSTONE 91C LAD ET 178F

RED CALVO BAILEY 9X

RED TOP GRADE FANCY 169A

Feddes Big Sky R9

RED TG PEARL 170Y

A107 BA

BECKTON EPIC R397 K

Feirings RED LARKABA B82

1140 BA

Feirings RED LARKABA Y19

BECKTON NEBULA P P707

BECKTON LARKABA W813J

BW	205 Day Wt	Dam NR	Adj 365 Wt	Gain	WDA	Frame	Act Sc
78	639			2.90	3.17	5.25	34
BW	WW	Milk	Yw	Cw	Marb	Rea	Fat

Calving ease ****, Cow wt. 1450, DNA scores: DOC 7, MARB 7, REA 7, FAT 7

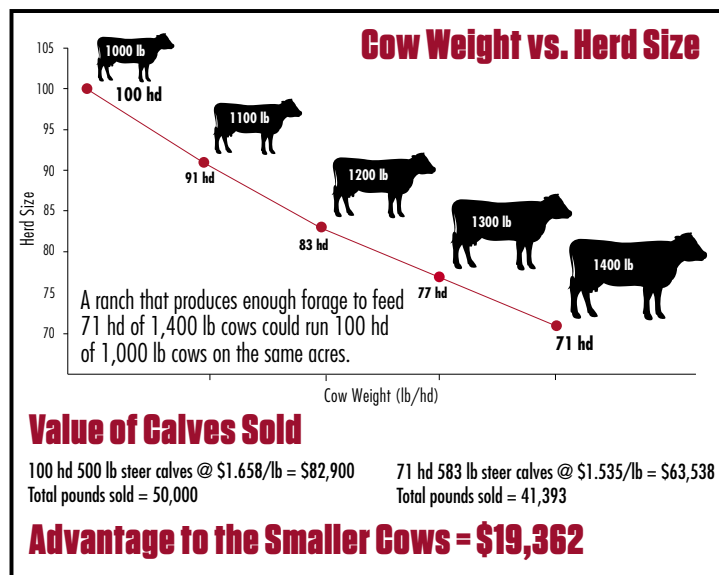


LOT 37

Do the math... More cows on the same forage means more profit.

What are your biggest costs? Feed and labor? Taking into account all of the variables Mother Nature throws at you, the key factor you can control is cow size. Getting cow size and stocking rate right has a huge impact on the bottom line. Smaller cows mean more cattle on the same forage base. Spreading your fixed costs over greater numbers and reducing variable costs per head improves net profit.

Information and graph provided by the American Aberdeen Association.



lot
38

Feirings Diplomat 035

Reg. No. 626201297 Tattoo: 035-B20 DOB: 04/28/20

O C C You're Exact 763Y

O C C Paxton 730P

O C C Diplomat 869D

O C C Pollyanna 944H

O C C Revolution Rose 807Z

O C C Emblazon 854E

O C C Revolution Rose 743K

O C C X-cursion 858X

O C C Focus 813F

Feirings Ms Jeanne E30

O C C Blackcap 872K

Feirings Ms Jeanne Y09

O C C Ultima 636U

Feirings Ms Thunder W05

BW	205 Day Wt	Dam NR	Adj 365 Wt	Gain	WDA	Frame	Act Sc
76	662		1094	2.70	2.92	4.33	35
BW	WW	Milk	Yw	Cw	Marb	Rea	Fat

Calving ease **, BW 7, CED 7, STAY 7, ADG 7, RFI 7, TEND 7, FAT 7



LOT 38

lot
39

Feirings Pinebank 055

Reg. No. 626201315 Tattoo: 055-B20 DOB: 05/03/20

Pinebank Waigroup 152/04

Pinebank Waigroup 45/02

Pinebank Southeast 117d

Pinebank Waigroup 86/96

Pinebank 25/08

Pinebank 1/06

Pinebank Waigroup 125/03

O C C X-cursion 858X

O C C Focus 813F

Feirings Ms Elfileen F117

O C C Blackcap 872K

Feirings Ms Elfileen W114

O C C Thunder 612T

Feirings Ms Dateline T57

BW	205 Day Wt	Dam NR	Adj 365 Wt	Gain	WDA	Frame	Act Sc
76	700		1094	2.46	2.86	4.30	34
BW	WW	Milk	Yw	Cw	Marb	Rea	Fat

Calving ease ***, Cow wt. 1055, DNA scores: CED 7, DOC 7, RFI 7, TEND 9, F



LOT 39

lot
40

Feirings Diplomat 064

Reg. No. 626201322 Tattoo: 064-B20 DOB: 05/05/20

O C C You're Exact 763Y

O C C Paxton 730P

O C C Diplomat 869D

O C C Pollyanna 944H

O C C Revolution Rose 807Z

O C C Emblazon 854E

O C C Revolution Rose 743K

O C C Thunder 612T

O C C Emblazon 854E

Feirings Betty Lew Y102

O C C Dixie Erica 903E

Feirings Betty Lew W97

FCC Linebred 6118

Bairds Betty Lew Q74

BW	205 Day Wt	Dam NR	Adj 365 Wt	Gain	WDA	Frame	Act Sc
82	684	4-101	1090	2.54	3.05	4.68	33
BW	WW	Milk	Yw	Cw	Marb	Rea	Fat

Calving ease ***, Cow wt. 1330, DNA scores: CED 8, RFI 8, FAT 7,

**FIND THE LORD BEFORE YOU
NEED HIM AND NEVER LOSE
YOUR PRIDE, DON'T EVER
SELL YOUR SADDLE 'CAUSE
LIVE IS A LONG LONG RIDE.**

lot
41

Feirings Scotty 045

Reg. No. 626201304 Tattoo: 045-B20 DOB: 04/30/20

Dunlouse Jipsey Earl E161

Betro of Classlochie

Citadel of Saddle Butte 47/15

Dunlouse Jipsey Clova C095

Dunlouse CBlossom Erin E171

Jasnic Erica of Kempsons

Cherry Bee W9 of Champagne

O C C X-cursion 858X

O C C Focus 813F

Feirings Ms Emblynette C32

O C C Blackcap 872K

Feirings Ms Emblynette W30

O C C Thunder 612T

Feirings Ms Cinch T11

BW	205 Day Wt	Dam NR	Adj 365 Wt	Gain	WDA	Frame	Act Sc
82	666	3-101	1082	2.60	3.01	3.86	34
BW	WW	Milk	Yw	Cw	Marb	Rea	Fat

Calving ease ***, Cow wt. 1485, DNA scores: ADG 7, FAT 7,



LOT 41

lot
42

Feirings Ballot 015

Reg. No. 626201277 Tattoo: 015-B20 DOB: 04/22/20
 Octoraro Ballot STO 6 Ballot of Belladrum
SVR Ballot Black 7117 Octoraro Gammer 203
 K C F Miss 5522 D3 Emulation N Bar 5522
 C S U Miss Traveler 0138
 FairView Bardolene 4235 Grassy Lanes Bardolene 26Z
Feirings Ms Karma F80 Linda Lou of Grassy Lanes
 Feirings Ms Karama A82 O C C X-cursion 858X
 Feirings Ms Karama Y22

BW	205 Day Wt	Dam NR	Adj 365 Wt	Gain	WDA	Frame	Act Sc
82	676		1079	2.52	2.79	3.99	33
BW	WW	Milk	Yw	Cw	Marb	Rea	Fat

Calving ease***, Cow wt.1090, DNA scores-HPR 7, RFI 9, TEND 10,



LOT 42

lot
43

Feirings RED Gemstone 068

Reg. No. 626201326 Tattoo: 068-B20 DOB: 05/05/20
 RED CALVO 91C RED OCC EASY RED
RED GEMSTONE 91C LAD ET 178F RED CALVO BAILEY 9X
 RED TOP GRADE FANCY 169A Feddes Big Sky R9
 RED TG PEARL 170Y
 FairView Manderson 3068 Redland Manderson 2038
Feirings Ms Ituna E19 FV Erica R114
 Feirings Ms Ituna X66 Feirings Royal Fortune 342
 Feirings Ms Tonto J32

BW	205 Day Wt	Dam NR	Adj 365 Wt	Gain	WDA	Frame	Act Sc
84	632		1078	2.79	2.88	4.58	32
BW	WW	Milk	Yw	Cw	Marb	Rea	Fat

Calving ease ****, Cow wt. 1365, DNA scores: CED 8, REA 8, FAT 8,



LOT 43

lot
44

Feirings Pinebank 076

Reg. No. 626201335 Tattoo: 076-B20 DOB: 05/08/20
 Pinebank Waigroup 152/04 Pinebank Waigroup 45/02
Pinebank Southeast 117d Pinebank Waigroup 86/96
 Pinebank 25/08 Pinebank 1/06
 Pinebank Waigroup 125/03
 O C C Focus 813F
 O C C Blackcap 872K
Feirings Miss Rita F102 FCC Ledger 16G 0529
 FCC MISS RITA 3324 FCC MISS RITA 1606

BW	205 Day Wt	Dam NR	Adj 365 Wt	Gain	WDA	Frame	Act Sc
82	670		1056	2.41	2.76	4.88	33
BW	WW	Milk	Yw	Cw	Marb	Rea	Fat

Calving ease ***, Cow wt. 1175. DNA Scores: CED 8, REA 8, FAT 8



LOT 44

lot
45

Feirings Conquest 051

Reg. No. 626201311 Tattoo: 051-B20 DOB: 05/02/20
 O C C Sentinel 714S O C C Focus 813F
O C C Conquest 660C O C C Blackcap 804M
 O C C Pollyanna 944H O C C Anchor 771A
 O C C Pollyanna 979F
 DDA Ledger 69D
 FCC Linebred 6118 MH Bonnie Belle 332
Feirings Miss Princess B101 FCC Linebred 6118
 Feirings Miss Princess Y17 Feirings Miss Princesss U114

BW	205 Day Wt	Dam NR	Adj 365 Wt	Gain	WDA	Frame	Act Sc
76	624		1053	2.68	2.91	4.54	33
BW	WW	Milk	Yw	Cw	Marb	Rea	Fat

Calving ease ***, Cow wt. 1305, DNA scores: CED 9, STAY 8, RFI 8, TEND 7,

lot
46

Feirings Titan 012

Reg. No. 626201275 Tattoo: 012-B20 DOB: 04/23/20
 MH TITAN 752 O C C Great Plains 943G
EDIE CREEK TITAN 75D MH MELISA 357
 EDIE CREEK 839L CAROLINE 48W O C C Legacy 839L
 EDDIE CREEK CAROLINE 10M
 Dunlouse Jipsey Earl E161
 Citadel of Saddle Butte 47/15 Dunlouse CBlossom Erin E171
Feirings Ms Ituna F108 O C C Thunder 612T
 Feirings Ms Thunder W01 Feirings Ms Freedom T12

BW	205 Day Wt	Dam NR	Adj 365 Wt	Gain	WDA	Frame	Act Sc
80	653	1-98	1050	2.48	2.70	4.16	36
BW	WW	Milk	Yw	Cw	Marb	Rea	Fat

Calving ease ****, Cow wt. 1160, DNA scores, CED 9, RFI 9, TEND 9,

lot
47

Feirings Diplomat 019

Reg. No. 626201281 Tattoo: 019-B20 DOB: 04/25/20

O C C You're Exact 763Y

O C C Paxton 730P

O C C Diplomat 869D

O C C Pollyanna 944H

O C C Revolution Rose 807Z

O C C Emblazon 854E

O C C Revolution Rose 743K

O C C Zodiac 616Z

O C C Jet Stream 825J

Feirings Ms Princess E118

O C C Juanada 826R

Feirings Ms Princess X140

Feirings Grande 720

Feirings Miss Marriott 653

BW	205 Day Wt	Dam NR	Adj 365 Wt	Gain	WDA	Frame	Act Sc
72	602		1048	2.79	2.76	4.19	32
BW	WW	Milk	Yw	Cw	Marb	Rea	Fat

Calving ease ***, Cow wt. 1250, DNA scores CED 7, DOC 7, STAY 7, RFI 8, T



LOT 47

THIS LIFESTYLE ISN'T JUST ABOUT THE ANIMLAS. IT'S ABOUT THE BELIEFS AND VALUES PASSED DOWN THROUGH GENERATIONS, ENSURING THINGS ARE LEFT BETTER FOR THOSE YET TO COME.

IT'S ABOUT LEGACY.

lot
48

Feiring Conquest 002

Reg. No. 626201261 Tattoo: 002-B20 DOB: 04/17/20

O C C Sentinel 714S

O C C Focus 813F

O C C Conquest 660C

O C C Blackcap 804M

O C C Pollyanna 944H

O C C Anchor 771A

O C C Pollyanna 979F

FairView Manderson 3068

Redland Manderson 2038

Feirings Ms Maire D59

FV Erica R114

Feirings Ms Maire A113

O C C Wider 867W

Feirings Miss Princess U42

BW	205 Day Wt	Dam NR	Adj 365 Wt	Gain	WDA	Frame	Act Sc
68	673		1031	2.24	2.82	4.57	33
BW	WW	Milk	Yw	Cw	Marb	Rea	Fat

Calving ease ****, Cow wt. 1270, DNA scores CED 8, HRP 7, RFI 7,

lot
49

Feirings Scotty 062

Reg. No. BR Tattoo: 062-B20 DOB: 05/05/20

626204321
Dunlouis Jipsey Earl E161

Betro of Classlochie

Citadel of Saddle Butte 47/15

Dunlouis Jipsey Clova C095

Dunlouis CBlossom Erin E171

Jasnic Erica of Kempsons

Cherry Bee W9 of Champagne

O C C X-cursion 858X

O C C Focus 813F

Feirings Ms Dixie B54

O C C Blackcap 872K

Feiring Ms Dixie Y57

O C C Ultima 636U

Feirings Ms Dixie W44

BW	205 Day Wt	Dam NR	Adj 365 Wt	Gain	WDA	Frame	Act Sc
74	616		1000	2.40	2.82	4.50	35
BW	WW	Milk	Yw	Cw	Marb	Rea	Fat

Calving ease ****, Cow wt. 1395, DNA scores:



LOT 49

lot
50

Feirings Scotty 026

Reg. No. 626201288 Tattoo: 026-B20 DOB: 04/26/20

Dunlouis Jipsey Earl E161

Betro of Classlochie

Citadel of Saddle Butte 47/15

Dunlouis Jipsey Clova C095

Dunlouis CBlossom Erin E171

Jasnic Erica of Kempsons

Cherry Bee W9 of Champagne

FCC Mt Time 2103

Sinclair Mt Time 4P88

Feirings Ms Karama Z103

DR Mabel 507

Feirings Ms Karama X22

Feirings Pinebank 817

Feirings Ms Karama U92

BW	205 Day Wt	Dam NR	Adj 365 Wt	Gain	WDA	Frame	Act Sc
70	638		1014	2.35	2.82	5.05	34
BW	WW	Milk	Yw	Cw	Marb	Rea	Fat

Calving ease ***, Cow wt. 1210, DNA scores RFI 7, TEND 9



LOT 50

lot
51

Feirings Pinebank 088

Reg. No. 626201342 Tattoo: 088-B20 DOB: 05/10/20
 Pinebank Waigroup 152/04 Pinebank Waigroup 45/02
 Pinebank Southeast 117d Pinebank Waigroup 86/96
 Pinebank 25/08 Pinebank 1/06
 Pinebank Waigroup 125/03
 O C C Jet Stream 825J
 O C C Juanada 826R
Feirings Ms Princess F32 FCC Ledger 69D 0523
 Feirings Ms Princess A101 Feirings Ms Princess X17

BW	205 Day Wt	Dam NR	Adj 365 Wt	Gain	WDA	Frame	Act Sc
82	666		1266	3.75	3.28	5.44	34
BW	WW	Milk	Yw	Cw	Marb	Rea	Fat

Calving ease **** Cow wt 1130 DNA -HRP 7

lot
52

Feirings Conquest 099

Reg. No. 626201346 Tattoo: 099-B20 DOB: 05/12/20
 O C C Sentinel 714S O C C Focus 813F
O C C Conquest 660C O C C Blackcap 804M
 O C C Pollyanna 944H O C C Anchor 771A
 O C C Pollyanna 979F
 O C C Jet Stream 825J
 O C C Juanada 826R
Feirings Ms Emblynette C10 Feirings Freedom 347
 Feirings Ms Emblynette U49 Feirings Miss Grande J08

BW	205 Day Wt	Dam NR	Adj 365 Wt	Gain	WDA	Frame	Act Sc
82	633		1063	2.69	2.96	4.98	32
BW	WW	Milk	Yw	Cw	Marb	Rea	Fat

Calving ease**, Cow wt. 1510, DNA scores: CED 7, RFI 8,

lot
53

Feirings Dodge 0100

Reg. No. 626201348 Tattoo: 0100-B20 DOB: 05/12/20
 O C C Unbelievable 851U O C C Practical 841P
O C C Dodge 678D O C C Pollyanna 944H
 O C C Pollyanna 613B O C C Missing Link 830M
 O C C Pollyanna 944H
 O C C Focus 813F
 O C C Blackcap 872K
Feirings Ms Sarah C67 O C C Ultima 636U
 Feirings Ms Sarah Z45 Feirings Ms Sarah S73

BW	205 Day Wt	Dam NR	Adj 365 Wt	Gain	WDA	Frame	Act Sc
84	650		1117	2.92	3.11	4.98	31
BW	WW	Milk	Yw	Cw	Marb	Rea	Fat

Calving ease ***, Cow wt. 1380, DNA scores: DOC 7, RFI 9, TEND 9, MARB 7,

lot
54

Feirings Pinebank 0106

Reg. No. 626201353 Tattoo: 0106-B20 DOB: 05/13/20
 Pinebank Waigroup 152/04 Pinebank Waigroup 45/02
Pinebank Southeast 117d Pinebank Waigroup 86/96
 Pinebank 25/08 Pinebank 1/06
 Pinebank Waigroup 125/03
 Dunlouse Jipsey Earl E161
 Dunlouse CBlossom Erin E171
Feirings Ms Marina F41 O C C X-cursion 858X
 Feirings Ms Marina C60 Feirings Ms Marina U129

BW	205 Day Wt	Dam NR	Adj 365 Wt	Gain	WDA	Frame	Act Sc
74	730				3.04		33
BW	WW	Milk	Yw	Cw	Marb	Rea	Fat

Calving ease ***, Cow wt. 1110, DNA scores: DOC 8, HRP 7, MILK 8, RFI 8, T

THANK YOU FOR ATTENDING OUR 27TH ANNUAL SALE!



LOT 52



LOT 53



CEYLON WITH A BOTTLE LAMB

FEIRING ANGUS AGBOOST DNA SCORES

DNA was processed at Neogen Geneseek Operations / IGENITY

What are AgBoost DNA Scores? AgBoost identifies 16 traits and applies a score from 1-10, with 1 being lowest score and 10 being the highest score, against all breeds today. A higher score is generally better, unless you want less BW, FAT and RFI, then you would want a lower score. The DNA test is done at Igenity (Neogen Geneseek Operations) Lab, and Agboost is the 3 party source.

Lot#	Herd#	BW	CED	CEM	DOC	HRP	MILK	STAY	ADG	RFI	TEND	MARB	REA	FAT	HC	WW	YW
1	30	6	5	4	7	7	4	5	6	7	7	4	4	7	5	6	6
2	59	5	7	4	3	7	6	6	6	7	10	7	3	9	5	6	6
3	29	5	7	2	7	7	6	5	4	7	7	5	6	7	6	4	4
4	75	5	5	4	5	4	4	5	7	4	9	5	6	7	5	7	7
5	7	5	5	4	5	4	4	5	7	4	9	5	6	7	5	7	7
6	72	4	5	5	5	4	4	4	5	5	6	3	5	6	3	5	5
7	5	5	4	5	5	4	4	5	7	4	9	5	6	7	5	7	7
8	79	5	7	4	6	6	5	6	4	7	4	4	4	8	3	4	4
9	24	7	6	7	5	4	6	5	5	6	6	7	6	5	7	5	8
10	60	8	5	2	5	6	4	5	5	8	8	7	8	5	7	5	5
11	37	5	6	5	6	7	2	7	5	8	7	5	4	7	4	3	4
12	25	5	6	5	4	4	5	4	4	7	9	6	6	5	5	5	4
13	52	6	7	3	6	5	7	4	7	7	5	6	6	7	6	7	7
14	4	5	8	4	6	5	4	6	5	7	6	6	6	7	5	5	5
15	6	8	5	1	6	6	5	6	6	8	6	6	4	7	6	5	5
16	43	4	8	8	6	5	6	6	4	8	9	3	5	7	5	7	7
17	21	7	5	2	6	3	3	6	6	7	6	6	7	4	6	6	6
18	9	3	7	5	6	5	4	6	6	5	4	5	4	7	4	5	6
19	66	5	8	4	7	5	4	5	4	7	5	3	3	8	4	5	4
20	27	7	6	3	5	5	4	6	5	8	6	5	6	6	6	5	5
21	921	6	5	5	5	4	5	6	6	6	6	6	4	6	7	6	7
22	940	3	7	5	5	5	7	6	6	7	7	6	5	7	5	7	7
23	916	4	6	6	7	3	5	6	7	7	9	6	5	7	7	6	7
24	948	3	5	4	5	4	4	5	3	5	6	5	3	6	4	3	4
25	10	7	7	2	6	4	5	4	7	5	3	6	7	7	7	7	7
26	61	5	6	3	6	3	6	6	6	7	7	9	4	6	4	6	6
27	77	N/A															
28	20	4	8	4	5	3	5	7	6	7	10	6	5	9	4	6	6
29	70	6	7	3	6	2	3	6	8	5	7	5	5	6	6	7	7
30	44	4	8	6	5	4	4	4	7	5	6	9	4	6	5	7	7
31	71	6	8	2	6	4	2	6	6	5	6	5	8	8	6	6	6
32	46	3	7	3	6	4	3	7	5	6	9	8	4	8	3	6	6
33	8	5	5	3	8	4	5	6	4	7	9	6	4	7	3	5	5
34	80	8	4	2	7	2	3	5	8	4	6	8	7	6	9	8	8
35	101	3	8	3	7	3	5	8	6	7	10	9	4	8	3	6	6
36	105	3	6	4	6	3	3	4	6	9	7	3	8	3	8	6	6
37	112	4	6	2	7	6	3	4	6	5	6	7	7	7	7	7	6
38	35	7	6	1	5	5	3	7	7	7	7	4	5	7	5	6	6
39	55	5	7	3	7	5	3	6	6	7	9	6	4	7	4	6	6
40	64	3	8	2	6	5	4	6	5	8	4	4	3	7	4	5	5
41	45	4	4	5	6	5	5	6	7	5	6	5	4	7	3	6	6
42	15	6	5	4	6	7	3	3	5	9	10	3	4	5	5	5	5
43	68	6	8	2	6	4	2	6	6	5	6	5	8	8	6	6	6
44	76	6	8	2	6	4	2	6	6	5	6	5	8	8	6	6	6
45	51	5	9	4	5	6	4	8	4	8	7	4	3	6	4	4	4
46	12	4	9	3	6	5	5	5	6	9	9	4	6	7	4	5	6
47	19	5	6	6	7	4	8	4	6	5	6	6	5	7	7	5	6
48	2	4	8	3	5	7	4	6	6	7	6	4	5	7	3	5	5
49	62	3	7	3	3	6	4	6	5	5	4	4	4	7	3	5	5
50	26	5	3	3	6	4	3	5	4	7	9	4	4	6	4	4	4
51	88	5	6	2	6	7	2	6	7	7	3	6	5	5	4	6	7
52	99	6	7	4	5	4	4	6	5	8	4	6	5	6	4	5	5
53	100	6	6	3	7	4	4	4	6	9	9	7	6	7	7	6	6
54	106	7	5	4	8	7	8	3	6	8	7	6	3	8	4	6	6
AVG																	

DOC: DOCILITY
MARB: MARBLING
TEND: TENDERNESS
STAY: STAYABIITY

BW: VARIATION IN BW PASSED ON
FAT: FAT THICKNESS
WW: WEANING WEIGHT
YW: YEARLING WEIGHT

ADG: AVERAGE DAILY GAIN
HCW: HOT CARCASS WEIGHT
CED: CALVING EASE DIRECT
RFI: RESIDUAL FOOD INTAKE

CEM: CALVING EASE MATERNAL
HRP: HEIFER PREGNANCY RATE
RIB: RIBEYE AREA

(Higher the score is usually best, unless you want less BW, FAT & RFI, then a lower score is better)

WHERE DO I GET THE RIGHT BULLS FOR MY MATERNAL COWHERD?

BY BURKE TEICHERT

PUBLISHED BY BEEF MAGAZINE, JANUARY 3, 2019

Last month I wrote about heifer development, suggesting methods different from those typically used. I have since been wondering about the bulls used by most ranchers who produce their own replacement heifers. Are those bulls “undoing” most of what the producer is trying to accomplish with his heifer development and selection practices?

Looking back into my own history of cattle breeding, I have become convinced that most of us ranchers have been using terminal matings across our entire herd, except for heifers, since the early 70s when the continental breeds started to arrive in the U.S. It was an easy way to get a nice increase in weaning weight.

At about the same time, progeny testing was becoming popular and many of us got caught up in a race for higher and higher weaning weights which was further facilitated by the advent of EPDs. We did get higher weaning weights because we could always find a bull with a little more growth.

We were making terminal matings. The problem was that we weren’t doing terminal marketing. We were keeping those heifer calves as replacement heifers. So, cow size and milk production kept increasing. And stocking rate was decreasing or purchased feed was increasing.

I see no problem with ranchers deciding to use only terminal matings if they sell all of their calves—steers and heifers. In fact, I think many producers would be well advised to do exactly that.

It is easy to find good bulls for terminal matings. Current EPDs lend themselves well to selection for growth and carcass traits. I know a good number of breeders who buy replacement cows, make terminal matings and sell all of the calves.

The cows are just cows—nothing special. But the calves have a great potential for growth and carcass performance. They are nicely profitable. What if the cows were something special—coming from well-developed maternal herds?

Now, where are the bulls for the maternal breeders who are making their own replacement heifers, perhaps with the idea of having some bred cows to sell? These bulls are difficult to find.

Most of the EPDs available are not for maternal traits except as limiters—reducing cow size and milk, keeping growth in a moderate range, balancing maternal calving ease and calving ease direct, etc. Moderation of size, milk, growth and muscle seem to make better long-term mother cows.

The use of selection indices has some appeal. But when “supposed” strength in one trait can compensate for “supposed” weakness in another trait, what is an acceptable balance? When does high growth cause reduction in fertility or increase cow size (reduce stocking rate) in the next generation? At what level should milk production become a negative in the index?

I have asked a number of seedstock breeders those questions and only one had an answer; and I thought his level was too high—purely a guess on my part. What about epigenetic effects? This happens when environmental

factors turn on or off (or possibly modify) gene effects. How much of that is heritable or not heritable?

While I like to get aggressive in the use of EPDs for terminal sire selection, for reasons cited, I am much more cautious in the use of EPDs to select bulls for maternal herds. “Moderate” needs to be defined for your ranch, but the range around “your moderate” cannot be too large for any trait.

Cows must become adapted to your environment and then be adaptable to year-to-year variation. Nature will tell you which cows to cull and which bulls to select; but you need to recognize which ones they are.

There are some physical traits that are important such as udder quality, ability to move and travel, ability to maintain body condition on grazed feed with minimal supplementation, feed intake capacity, etc.

Beyond these, I am reminded of a statement heard many years ago—“We need to quit telling cattle what to look like and, instead, tell them what we want them to do and then let them look the way they need to look in order to do what we want them to do.” Remember, we can’t ask them to do more than the environment will provide for and allow.

I think there are a few people who have learned what cows need to look like, but most of us don’t have that skill except for the very obvious. So, how do you choose a bull for maternal matings?

First, the bull must be born in the first 25 days of the calving season—ideally a result of first cycle conception. Then I like to know as much as possible about closely related females. What about their udders, what is their mobility, how about disposition, how long are they staying in the cow herd, what kind of calves do they produce, are they always healthy, etc.?

Fertility and longevity along with the ability to produce an acceptable calf are really what we are looking for in good cows. Bulls that make that kind of cow are hard to find. Bulls that make the good cows usually come from good cow families—dams, grand-dams, sisters, and daughters are almost all good.

I think that is the reason that a good number of successful commercial ranchers are producing their own bulls. They select bulls from their adapted cows that have always calved in the first cycle. The cow must have calved as a two-year-old and again as a three-year-old before a bull can be kept.

The bulls must have good weight in relationship to hip height at one year of age. They must pass a BSE at a year of age after minimal development. A few breeders are breeding their yearling heifers to their yearling bulls—only yearling bulls—then using DNA for parentage to know which bulls sired the most calves. That ought to check for a combination of fertility, libido and structural soundness at a young age.

To have a good maternal cow herd you must use bulls that are highly fertile, structurally sound, that will produce calves that have good growth (not outstanding) and are acceptable in the marketplace.

ASH COULEE RANCH



Dear Friends, welcome to the Feiring Angus and Ash Coulee Ranch Production Sale. We are honored to offer another strong set of trouble free bulls and heifers and value the interest you have shown in our programs. These are cattle produced by some of the best genetics available to give a balance of economical traits so needed by ranchers to show profitability.

This year our good friends John and Karyn Halcrow from McClusky will be selling 50 yearling heifers at the sale. These heifers are 2 and more generations sired by Ash Coulee Bulls. They have used bulls by some of the greatest cows we have owned and it shows. Because John was a fire fighter and not available 24-7 to watch the herd their cowherd was expected to calve and mother the calves on their own including the first calf heifers. Ask John how that's going. These are some very care free genetics John and Karyn are offering and I'm very excited about the potential of these heifers.

Once again the sale will be on DVAuction. There will be information in the sale book to show how to use it. Even I know how it works so it must be quite easy.

We would like to thank our friends the Fearing's for including us in this sale and all the hard work they put into it. Also the beautiful facilities they provide. A special thanks goes out to all interested in our genetics. Your the reason we have been able to provide seedstock for over 50 years. Your the reason i have been blessed with the best job in the world. I would also like to thank all the friends and family that helps make this sale a success.

The Davis Family
Scott Davis
6595 99th Drive NW, White Earth, ND 58794
Steve Davis 701-755-3382 | Scott Davis 701-641-8705
sedavis82854@yahoo.com



BEST ALLIANCE 5023

A Paternal half brother to Box Cross 291 out of our A C Blackbird Blossom 918 cow he was raised from an embryo at Best Angus Ranch. Always searching for those easy growing genetics, 5023 was the high gaining bull of his group gaining 4.21 lbs. per day with a ratio of 126. Used as a yearling at Best Ranch he continued his rapid gain weighing 2175 lbs. at 26 months. He sires slightly larger calves at birth than Box Cross with tremendous performance, size and scale. His first daughter's look very good.

Candolier Forever 376 40 times, R R Rito 707 37 times, Shearbrook Shoshone 9 times



BEST TRACKER 6059

Another son of the maternal great, A C Blackbird Blossom 918, produced in Best Ranch's embryo program. He brings one of my favorite old-line Angus bulls C A R tracker 305 along with two other of my all-time favorite bulls, GDAR Dateline 354 and the easy calving specialist C T Miner 308. CAR Tracker 305 is the sire of the great cow A C Duke Girl 57 the \$53,000 Payne Angus Ranch Donor. We expect this bull to do great things for the angus breed. His daughters are exactly what we expected, wide, capacious and beautiful and his sons have the look and are performing well. Best Tracker 6059 had an IMF ratio of 131 and Rib Eye ratio of 118 so we expect some quality carcass traits also. He has good hard as flint feet and is sure footed and agile as a mule on the icy ground. Candolier Forever 376-27 times, R R Rito 707-31 times, Shearbrook Shoshone-24 times

A

Best Alliance 5023

Reg. No. 18491688 | Tattoo: 5023 | DOB: 3/21/15

Sitz Alliance 7617	Sitz Alliance 6595
LAR Alliance 64L	Sitz Elsa Evergreen 1572
Eileenmere Diamond 161 L A R	V D A R Traveler 170
GDAR Dateline 354	Eileenmere Diamond 41F L A R
A C Blackbird Blossom	Vermilion Dateline 7078
A C Blackbird Blossom 265	Gdar SVF Forever Lady 226D
	C T Miner 308
	A C Blackbird Blossom 81

Act BW	205 WT	365 WT	WDA	CED	BW	WW	MILK	YW	CW	MARB	REA	FAT
80	607	1257	3.45	3	2.0	64	30	116	57	.30	.27	-.015

B

Best Tracker 6059

Reg. No. 18701721 | Tattoo: 6059 | DOB: 3/26/16

Car Tracker 904	C A R Tracker 614
CAR Tracker 305	Lady New Trend 027 C A R
C A R Miss Julie 643	Rito 054 G D A R
GDAR Dateline 354	Lady Traveler 449 C A R
A C Blackbird Blossom	Vermilion Dateline 7078
A C Blackbird Blossom 265	Gdar SVF Forever Lady 226D
	C T Miner 308
	A C Blackbird Blossom 81

Act BW	205 WT	365 WT	WDA	CED	BW	WW	MILK	YW	CW	MARB	REA	FAT
84	609	1054	2.89	2	2.5	47	31	81	33	.48	.39	.029

C

BA New Design 511

Reg. No. 18346143 | Tattoo: 511 | DOB: 3/11/15

Sua New Design 435 RR 9654

BA New Design 316

BA RH Lauria 176

Sua New Design 435 RR 9654

BA Miss Design378

BA Cowgirl 189

E&B 878 New Design 435

Blackbird of RR 4688

BA Right ON 610

SUA Ranch Hand Lauria 3314

E&B 878 New Design 435

Blackbird of RR 4688

B A Cowboy 994

B A Jewel 9165

Act BW	205 WT	365 WT	WDA	CED	BW	WW	MILK	YW	CW	MARB	REA	FAT
73	903	1333	3.65	14	-1.8	44	27	84	24	.70	.12	.045

Discovered in South Dakota because of his calving ease potential and his eye catching phenotype, it took a \$17,000 bid to bring him home to Ash Coulee. We have used him lightly through no fault of his own waiting his turn to shine. His low birth, high growth sons will be your favorites in this years sale. 511 was used on 30 cows last year and has a strong future at AC. His daughters have peas in a pod beautiful udders and are the front pasture kind. One of the easiest fleshing bulls we have ever used, he can get fat on hay.

Candolier Forever 376 over 37 times, RR Rito 707 over 113 times, Shearbrook Shoshone over 37 times



BA NEW DESIGN 511



DAM

D

A C Coleman Charlo 60

Reg. No. 18729011 | Tattoo: 60 | DOB: 1/2/16

O C C Paxton 730P

Coleman Charlo 0256

Bohi Abigale 6014

Coleman Manning 0299

Coleman Dixie Erica 470

Coleman Dixie Erica 1611

O C C Focus 813F

O C C Blackbird 736K

Sitz Traveler 8180

S A V Abigale 6062

O C C Juneau 807J

Coleman Donna 714

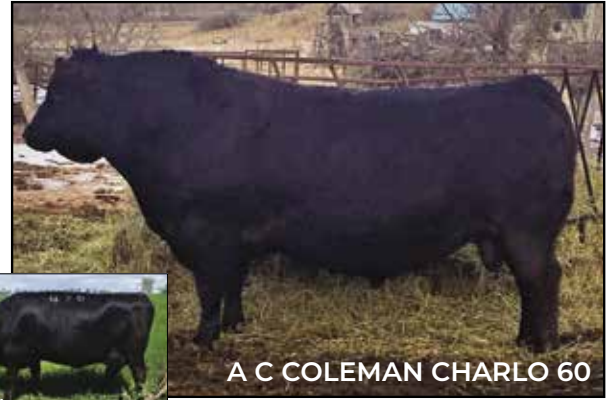
O C C Echelon 857E

CRCC Dixie Erica 2639

Act BW	205 WT	365 WT	WDA	CED	BW	WW	MILK	YW	CW	MARB	REA	FAT
72	765	1294	3.55	10	-2.5	29	26	61	6	.19	.25	.022

What a great day it was when my Dad decided to buy Coleman Dixie Erica 470 pregnant with a Charlo bull calf. Not often do we add new cow genetics but 470 has earned her right to stay. She traces 16 times to the famous cow maker Rito 707 closer up in the pedigree. We also wanted to introduce the power of the Blackcap May cow family to our herd of cattle. His first sons will be available for inspection and sale. We think you will like them. His first 7 daughters had a weaning ratio of 108 which proves the power and performance of the females 8024 should add to the program.

Candolier Forever 376 11 times, RR Rito 707 62 times, Shearbrook Shoshone 9 times



A C COLEMAN CHARLO 60



DAM

E

Beck-CSG Recreated 8024

Reg. No. 19369999 | Tattoo: 8024 | DOB: 1/25/18

R R Rito 707

Rito 707 of Ideal 3407 7075

Ideal 3407 of 1418 076

S A V 8180 Traveler 004

S A V Blackcap May 8962

S A V May 2397

Rito N Bar

Eriskay of Rollin Rock 3

Ideal 1418 of 8103 4286

Ideal 076 of 692 8375

Sitz Traveler 8180

Boyd Forever Lady 8003

S A F 598 Bando 5175

S A V May 7238

Act BW	205 WT	365 WT	WDA	CED	BW	WW	MILK	YW	CW	MARB	REA	FAT
76	969	1467	4.02	-2	3.6	66	23	113	55	-.29	.69	.011

As his name would imply Beck-CSG Recreated 8024 is a full Sib in blood to SAV Resource 1441 and bred to recreate some of the goodness of SAV Resource 1441. We brought him to Ash Coulee Ranch to bring the genetics of RR Rito 707 closer up in the pedigree. We also wanted to introduce the power of the Blackcap May cow family to our herd of cattle. His first sons will be available for inspection and sale. We think you will like them. His first 7 daughters had a weaning ratio of 108 which proves the power and performance of the females 8024 should add to the program.



BECK-CSG RECREATED 8024

F

A C Windy 622

Reg. No. 18728922 | Tattoo: 622 | DOB: 3/13/16

H A R B Windy 758 J H

McD SF Windy 2236

SF Miss 975

Berbos Traveler 5556 3347

A C Pretty Mary 537

A C Pretty Mary 72

H A R B Windy 702 JH

H A R B Juanada Erica 571 JH

TC Total 410

SF AF Wyffels Miss 5407

Sitz Traveler 5556

Sitz Everelda Entense 4998

J R Juice 2005

A C Pretty Mary 565

Act BW	205 WT	365 WT	WDA	CED	BW	WW	MILK	YW	CW	MARB	REA	FAT
82	739	1297	3.55	1	2.7	59	28	101	41	.22	.56	-.002

All you probably have a Windy son just as good but the Windy genetics were so awesome at AC I couldn't let it go. Windy 622 was our second high selling bull in our 2017 sale. He was our high performing Windy that year and we are using him because of his top producing beautiful dam. A C Pretty Mary 537 was one of the best uddered cows I have ever seen. Perfect at 13 years old, She could have put most 3 year old's to shame for tightness, attachment and teat size. 622 is siring the great Windy muscle pattern with a little more performance than his sire and brings one more great cow to the mix. *Candolier Forever 376-44 times, RR Rito 707-88 times, Shearbrook Shoshone-23 times*



A C WINDY 622

YEARLING BULLS

LOTS 60-92



62

A C Beaufort 065

Reg. No. 19976822 | Tattoo: 65 | DOB: 3/31/20

BA New Design 316
BA New Design 511
BA Miss Design378

Sua New Design 435 RR 9654
BA RH Lauria 176
Sua New Design 435 RR 9654
BA Cowgirl 189
Vermilion Dateline 7078
Gdar SVF Forever Lady 226D

GDAR Dateline 354
A C Sarah 21
A C Sarah 64

L A Traveler 51
A C Sarah 441

Act. BW	Adj. 205 Wt	Dam WR	Adj. 365 Wt	Gain
88	775	9@97	1317	3.73
BW	WW	Milk	YW	
1.7	48	25	88	

Good feedlot growth, 111 gain ratio. (3.64 WDA)

64

A C Beaufort 04

Reg. No. 19976799 | Tattoo: 4 | DOB: 3/12/20

BA New Design 316
BA New Design 511
BA Miss Design378

Sua New Design 435 RR 9654
BA RH Lauria 176
Sua New Design 435 RR 9654
BA Cowgirl 189
Vermilion Dateline 7078
Gdar SVF Forever Lady 226D

GDAR Dateline 354
A C Gypsofolia 311
A C Gypsofolia 23

B C C Bushwacker 41-93
A C Gipsofolia 10

Act. BW	Adj. 205 Wt	Dam WR	Adj. 365 Wt	Gain
76	755	6@96	1281	3.56
BW	WW	Milk	YW	
-0.2	47	25	84	

Heifer bull with some growth. 106 gain ratio, +11 CED. (3.48 WDA)

60

A C Beaufort 062

Reg. No. 19976819 | Tattoo: 62 | DOB: 3/30/20

BA New Design 316
BA New Design 511
BA Miss Design378

Sua New Design 435 RR 9654
BA RH Lauria 176
Sua New Design 435 RR 9654
BA Cowgirl 189
CAR Tracker 305
A C Forever & Ever Glory

A C Tracker 848
A C Princess 335
A C Princess 976

GDAR Dateline 354
A C Princess 500

Act. BW	Adj. 205 Wt	Dam WR	Adj. 365 Wt	Gain
82	818	7@104	1456	3.99
BW	WW	Milk	YW	
0.5	53	31	99	

Herd Bull. High weaning and yearling weight. Gain Ratio: 119. (4 lb WDA)

61

A C Beaufort 050

Reg. No. 19976815 | Tattoo: 50 | DOB: 3/26/20

BA New Design 316
BA New Design 511
BA Miss Design378

Sua New Design 435 RR 9654
BA RH Lauria 176
Sua New Design 435 RR 9654
BA Cowgirl 189
Vermilion Dateline 7078
Gdar SVF Forever Lady 226D

GDAR Dateline 354
A C Blackbird Blossom 152
A C Blackbird Blossom 836

CAR Tracker 305
A C Blackbird Blossom 365

Act. BW	Adj. 205 Wt	Dam WR	Adj. 365 Wt	Gain
84	781	8@106	1290	3.14
BW	WW	Milk	YW	
0.6	45	29	81	

Good weaning weight, nice phenotype. Good dam. (3.55 WDA)

63

A C Beaufort 077

Reg. No. 19976829 | Tattoo: 77 | DOB: 4/8/20

BA New Design 316
BA New Design 511
BA Miss Design378

Sua New Design 435 RR 9654
BA RH Lauria 176
Sua New Design 435 RR 9654
BA Cowgirl 189
CAR Tracker 305
A C Forever & Ever Glory

A C Tracker 848
A C Gypsofolia 354
A C Gypsofolia 967

RR Moonshine 3363
A C Gypsofolia 512

Act. BW	Adj. 205 Wt	Dam WR	Adj. 365 Wt	Gain
82	762	6@101	1250	3.05
BW	WW	Milk	YW	
0.0	42	29	75	

106 gain ratio, very moderate birth. (3.46 WDA)

65

A C Beaufort 019

Reg. No. 19976806 | Tattoo: 19 | DOB: 3/18/20

BA New Design 316
BA New Design 511
BA Miss Design378

Sua New Design 435 RR 9654
BA RH Lauria 176
Sua New Design 435 RR 9654
BA Cowgirl 189
Vermilion Dateline 7078
Gdar SVF Forever Lady 226D

GDAR Dateline 354
A C Queedy 141
A C Queedy 802

A C Prime Cut 55
A C Queedy 635

Act. BW	Adj. 205 Wt	Dam WR	Adj. 365 Wt	Gain
80	711	6@102	1341	3.94
BW	WW	Milk	YW	
0.8	47	28	92	

Great feedlot growth, 118 gain ratio, moderate birth. Good dam. (3.64 WDA)

66

A C Windy 056

Reg. No. 19976818 | Tattoo: 56 | DOB: 3/28/20

McD SF Windy 2236

H A R B Windy 758 J H

A C Windy 622

SF Miss 975

A C Pretty Mary 537

Berbo Traveler 5556 3347

A C Pretty Mary 72

BA New Design 511

BA New Design 316

A C Blackbird Blossom 797

BA Miss Design378

A C Blackbird Blossom 590

A C Jr 388

A C Blackbird Blossom

Act. BW	Adj. 205 Wt	Dam WR	Adj. 365 Wt	Gain
80	733	2@97	1242	3.18
BW	WW	Milk	YW	
1.3	49	26	88	

A nice Windy Bull out of a 511 dam. Fits right in. (3.31 WDA)

68

A C Resource 045

Reg. No. | Tattoo: 45 | DOB: 3/25/20

Rito 707 of Ideal 3407 7075

R R Rito 707

SAV Resource 1441

Ideal 3407 of 1418 076

S A V Blackcap May 4136

Sinclair Emulate 7XT28

S A V May 2397

Sinclair Fortunate Son

GDAR Dateline 354

Princess 7005 of Best Angus

Gdar SVF Forever Lady 226D

A C Princess 976

Act. BW	Adj. 205 Wt	Dam WR	Adj. 365 Wt	Gain
	790	1@109	1454	4.15
BW	WW	Milk	YW	
6.0	60	22	112	

High Gaining Bull and a Resource son. 4.15 gain 124 ratio. (3.87 WDA)

69

A C Recreate 033

Reg. No. 19976810 | Tattoo: 33 | DOB: 3/22/20

Rito 707 of Ideal 3407 7075

R R Rito 707

BECK-CSG Recreated 8024

Ideal 3407 of 1418 076

S A V Blackcap May 8962

S A V 8180 Traveler 004

S A V May 2397

FCC Priority 550W

O C C Priority 882P

A C Blackbird Blossom 286

FCC Rosetta 702P

A C Blackbird Blossom

GDAR Dateline 354

A C Blackbird Blossom 265

Act. BW	Adj. 205 Wt	Dam WR	Adj. 365 Wt	Gain
88	785	7@102	1284	3.12
BW	WW	Milk	YW	
3.5	61	26	104	

110 weaning ratio out of a favorite cow. Little more frame. (3.52 WDA)

71

A C Recreate 014

Reg. No. 19976802 | Tattoo: 14 | DOB: 3/17/20

Rito 707 of Ideal 3407 7075

R R Rito 707

BECK-CSG Recreated 8024

Ideal 3407 of 1418 076

S A V Blackcap May 8962

S A V 8180 Traveler 004

S A V May 2397

CAR Tracker 305

Car Tracker 904

Blackbird Blossom 6051 Best

C A R Miss Julie 643

A C Blackbird Blossom

GDAR Dateline 354

A C Blackbird Blossom 265

Act. BW	Adj. 205 Wt	Dam WR	Adj. 365 Wt	Gain
80	724	3@100	1327	3.77
BW	WW	Milk	YW	
3.4	60	27	112	

123 gain ratio and top yearling weight. Nice EPD's. Good cow. (3.56 WDA)

67

A C Beaufort 084

Reg. No. 19989007 | Tattoo: 84 | DOB: 4/15/20

BA New Design 316

Sua New Design 435 RR 9654

BA New Design 511

BA RH Lauria 176

BA Miss Design378

Sua New Design 435 RR 9654

BA Cowgirl 189

FCC Priority 550W

O C C Priority 882P

A C Gypsofolia 296

FCC Rosetta 702P

A C Gypsofolia 85

Connealy Lead On

A C Gypsofolia 433

Act. BW	Adj. 205 Wt	Dam WR	Adj. 365 Wt	Gain
72	715	7@102	1230	3.22
BW	WW	Milk	YW	
-0.8	38	29	70	

Heifer bull with a +11 CED and +11 CEM. Nice growth and good dam. (3.41 WDA)



A C BLACKBIRD BLOSSOM 918
GRANDDAM OF LOTS 66, 68, 71, 83, 76

70

A C Recreate 080

Reg. No. 19976831 | Tattoo: 80 | DOB: 4/10/20

Rito 707 of Ideal 3407 7075

R R Rito 707

BECK-CSG Recreated 8024

Ideal 3407 of 1418 076

S A V Blackcap May 8962

S A V 8180 Traveler 004

S A V May 2397

A C Shoot The Moon 927

A C Design 248

A C Princess 6003

A C Matilda 584

A C Princess 580

RR Moonshine 3363

New Trend Lady 065 E A

Act. BW	Adj. 205 Wt	Dam WR	Adj. 365 Wt	Gain
78	741	3@101	1272	3.25
BW	WW	Milk	YW	
1.0	46	28	79	

Lower birth bull with nice growth. I think use him on cows. (3.48 WDA)



BECK-CSG RECREATED - FULL SISTER TO LOT 71

GRANDPA AND GRANDKIDS



73 A C Recreate 064

Reg. No. 19976821 | Tattoo: 64 | DOB: 3/31/20

Rito 707 of Ideal 3407 7075

BECK-CSG Recreated 8024

S A V Blackcap May 8962

A C Jr 388

A C Pretty Mary 761

A C Pretty Mary 21

R R Rito 707

Ideal 3407 of 1418 076

S A V 8180 Traveler 004

S A V May 2397

A C VRD 986

A C Blackbird Blossom 711

Hart Prime Tracker 9538

A C Duke Girl 910

Act. BW	Adj. 205 Wt	Dam WR	Adj. 365 Wt	Gain
75	674	2@93	1250	3.60
BW	WW	Milk	YW	
2.2	50	21	92	

Another lower birth bull that maybe should be used on cows. (3.32 WDA)

75 A C Recreate 06

Reg. No. 19976801 | Tattoo: 6 | DOB: 3/13/20

Rito 707 of Ideal 3407 7075

BECK-CSG Recreated 8024

S A V Blackcap May 8962

McD SF Windy 2236

A C Lass 600

A C Cash Lass 289

R R Rito 707

Ideal 3407 of 1418 076

S A V 8180 Traveler 004

S A V May 2397

H A R B Windy 758 J H

SF Miss 975

FCC Priority 550W

A C Cash Lass 965

Act. BW	Adj. 205 Wt	Dam WR	Adj. 365 Wt	Gain
85	658	3@99	1202	3.40
BW	WW	Milk	YW	
3.3	44	25	81	

Nice looking bull out of one of my favorite cows. (3.20 WDA)



SR DOROTHY IDEAL 310
DAM OF LOT 77, GRANDDAM OF LOT 76

72 AC Recreate 027

Reg. No. 19976807 | Tattoo: 27 | DOB: 3/20/20

BECK-CSG Recreated 8024

S A V Blackcap May 8962

CAR Tracker 305

A C Sarah 6054

A C Sarah 39

Ideal 3407 of 1418 076

S A V 8180 Traveler 004

S A V May 2397

Car Tracker 904

C A R Miss Julie 643

C T Miner 308

A C Sarah 93

Act. BW	Adj. 205 Wt	Dam WR	Adj. 365 Wt	Gain
75	716	3@97	1150	2.71
BW	WW	Milk	YW	
1.5	35	24	72	

Low birth bull but maybe a cow bull. Your decision. Dam is 97 on birth ratio

74 A C Recreate 018

Reg. No. 19976805 | Tattoo: 18 | DOB: 3/17/20

Rito 707 of Ideal 3407 7075

BECK-CSG Recreated 8024

S A V Blackcap May 8962

McD SF Windy 2236

A C Blackbird 630

A C Blackbird 99

R R Rito 707

Ideal 3407 of 1418 076

S A V 8180 Traveler 004

S A V May 2397

H A R B Windy 758 J H

SF Miss 975

ER Broadband R517

A C Blackbird 724

Act. BW	Adj. 205 Wt	Dam WR	Adj. 365 Wt	Gain
80	706	3@95	1132	2.66
BW	WW	Milk	YW	
1.2	45	24	76	

This bull has some style, out of a very nice cow. (3.06 WDA)

76 A C Charlo Ideal 017

Reg. No. 19976804 | Tattoo: 17 | DOB: 3/17/20

Coleman Charlo 0256

A C Coleman Charlo 60

Coleman Dixie Erica 470

Best Alliance 5023

A C Dorothy Ideal 833

S R Dorothy Ideal 310

O C C Paxton 730P

Bohi Abigale 6014

Coleman Manning 0299

Coleman Dixie Erica 1611

LAR Alliance 64L

A C Blackbird Blossom

O C C Paxton 730P

S R Dorothy Ideal 825

Act. BW	Adj. 205 Wt	Dam WR	Adj. 365 Wt	Gain
76	762	1@107	1354	3.70
BW	WW	Milk	YW	
0.6	51	26	100	

This might be the one. 113 yearling ratio, 124 gain ratio. Try to find one like him. (3.49 WDA)

77 A C Windy 041

Reg. No. 19976814 | Tattoo: 41 | DOB: 3/24/20

McD SF Windy 2236

A C Windy 622

A C Pretty Mary 537

O C C Paxton 730P

S R Dorothy Ideal 310

S R Dorothy Ideal 825

H A R B Windy 758 J H

SF Miss 975

Berbos Traveler 5556 3347

A C Pretty Mary 72

O C C Focus 813F

O C C Blackbird 736K

21AR Outfitter 6032

Ideal 4535 of 7451 5467

Act. BW	Adj. 205 Wt	Dam WR	Adj. 365 Wt	Gain
72	736	6@101	1301	3.53
BW	WW	Milk	YW	
-0.3	52	24	91	

His dam is the grand dam of lot 76. I like this one for heifers and maternal. (3.56 WDA)

78

A C Windy 081

Reg. No. 19976830 | Tattoo: 81 | DOB: 4/10/20

McD SF Windy 2236

H A R B Windy 758 J H
SF Miss 975

A C Windy 622

A C Pretty Mary 537

Berbos Traveler 5556 3347
A C Pretty Mary 72

Cole Creek Full Bore 730

Cole Creek Black Cedar 46P
Cole Creek S G Jumboleen 76P

JSK Miss Diana 1309

CAR Miss Diana 8148

CAR Primeracker 511
CAR Miss Diana 157

Act. BW	Adj. 205 Wt	Dam WR	Adj. 365 Wt	Gain
81	726	7@100	1329	3.77
BW	WW		Milk	YW
2.6	50		26	92

Another Windy I like. Use him on cows for pounds and maternal. 113 gain ratio. (3.67 WDA)

80

A C Charlo 078

Reg. No. 19976828 | Tattoo: 78 | DOB: 4/6/20

Coleman Charlo 0256

O C C Paxton 730P
Bohi Abigale 6014

A C Coleman Charlo 60

Coleman Dixie Erica 470

Coleman Manning 0299
Coleman Dixie Erica 1611

S A V Regard 4863

S A V Resource 1441
S A V Blackcap May 5530

BRMF Blackcap May 8962-8016

S A V Blackcap May 8962

S A V 8180 Traveler 004
S A V May 2397

Act. BW	Adj. 205 Wt	Dam WR	Adj. 365 Wt	Gain
84	727	1@102	1293	3.54
BW	WW		Milk	YW
3.1	54		26	104

116 gain ratio, 108 YR. Granddam is a full sister to 4136 the dam of Resource. (3.38 WDA)

82

A C Tracker 075

Reg. No. 19976827 | Tattoo: 75 | DOB: 4/7/20

CAR Tracker 305

Car Tracker 904
C A R Miss Julie 643

Best Tracker 6059

A C Blackbird Blossom

GDAR Dateline 354
A C Blackbird Blossom 265

Best Box Cross 291

LAR Alliance 64L
Marie 8005 of Best Angus

A C Blackbird Blossom 549

A C Blackbird Blossom 31

GDAR Dateline 354
A C Blackbird Blossom 623

Act. BW	Adj. 205 Wt	Dam WR	Adj. 365 Wt	Gain
78	733	4@101	1253	3.25
BW	WW		Milk	YW
0.8	44		30	80

The only Tracker bull out of a good low birth Box Cross cow. (3.47 WDA)

84

A C Charlo 038

Reg. No. 19976813 | Tattoo: 38 | DOB: 3/23/20

Coleman Charlo 0256

O C C Paxton 730P
Bohi Abigale 6014

A C Coleman Charlo 60

Coleman Dixie Erica 470

Coleman Manning 0299
Coleman Dixie Erica 1611

Best Box Cross 291

LAR Alliance 64L
Marie 8005 of Best Angus

A C Blackbird 832

A C Blackbird 351

GDAR Dateline 354
A C Blackbird 242

Act. BW	Adj. 205 Wt	Dam WR	Adj. 365 Wt	Gain
68	712	1@100	1270	3.49
BW	WW		Milk	YW
-1.2	42		29	86

Charlo X Box Cross. Great heifer bull pedigree. A favorite. 114 gain ratio. (3.28 WDA)

79

A C Charlo 031

Reg. No. 19976809 | Tattoo: 31 | DOB: 3/22/20

Coleman Charlo 0256

O C C Paxton 730P
Bohi Abigale 6014

A C Coleman Charlo 60

Coleman Dixie Erica 470

Coleman Manning 0299
Coleman Dixie Erica 1611

Best Roughneck 40 of A C

Best Rough Creek 125
A C Princess 976

A C Rosetta 85

A c Rosetta 597

A C Short Stack 312
A C Rosetta 139

Act. BW	Adj. 205 Wt	Dam WR	Adj. 365 Wt	Gain
86	759	1@100	1225	2.91
BW	WW		Milk	YW
1.0	35		27	66

A growhty Charlo for cows and good daughters. Moderate. (3.17 WDA)

81

A C Charlo 066

Reg. No. 19976820 | Tattoo: 66 | DOB: 3/31/20

Coleman Charlo 0256

O C C Paxton 730P
Bohi Abigale 6014

A C Coleman Charlo 60

Coleman Dixie Erica 470

Coleman Manning 0299
Coleman Dixie Erica 1611

S A V Resource 1441

Rito 707 of Ideal 3407 7075
S A V Blackcap May 4136

BRMF Emblynette 5477-805

S A V Emblynette 5477

S A V 8180 Traveler 004
S A V Emblynette 7260

Act. BW	Adj. 205 Wt	Dam WR	Adj. 365 Wt	Gain
82	689	1@97	1161	2.95
BW	WW		Milk	YW
1.7	43		24	83

Cow bull out of a good daughter of SAV Resource 1441. (3.01 WDA)

83

A C Charlo 035

Reg. No. 19976812 | Tattoo: 35 | DOB: 3/22/20

Coleman Charlo 0256

O C C Paxton 730P
Bohi Abigale 6014

A C Coleman Charlo 60

Coleman Dixie Erica 470

Coleman Manning 0299
Coleman Dixie Erica 1611

Best Alliance 5023

LAR Alliance 64L
A C Blackbird Blossom

A C Princess 838

A C Princess 841

A C Design 248
A C Princess 580

Act. BW	Adj. 205 Wt	Dam WR	Adj. 365 Wt	Gain
68	803	1@111	1246	2.77
BW	WW		Milk	YW
-1.1	45		31	80

Start of the "Bet the Ranch" heifer bull pen. Great weaning weight. (3.24 WDA)

85

A C Beaufort 073

Reg. No. 19976826 | Tattoo: 73 | DOB: 4/2/20

BA New Design 316

Sua New Design 435 RR 9654
BA RH Lauria 176

BA New Design 511

BA Miss Design378

Sua New Design 435 RR 9654
BA Cowgirl 189

GDAR Dateline 354

Vermilion Dateline 7078
Gdar SVF Forever Lady 226D

A C Princess 021

A C Princess 580

RR Moonshine 3363
New Trend Lady 065 E A

Act. BW	Adj. 205 Wt	Dam WR	Adj. 365 Wt	Gain
78	741	9@101	1279	3.36
BW	WW		Milk	YW
-0.2	44		29	79

Heifer bull deluxe. +11 CED. Dam has 9 @95 birth ratio. Growth too. (3.46 WDA)

86

A C Beaufort 070

Reg. No. 19976825 | Tattoo: 70 | DOB: 4/1/20

BA New Design 316

Sua New Design 435 RR 9654

BA New Design 511

BA RH Lauria 176

BA Miss Design378

Sua New Design 435 RR 9654

BA Cowgirl 189

A C Design 248

A C 036-8180

A C Princess 841

Ash Coulee Ever Glory 46

A C Princess 580

RR Moonshine 3363

New Trend Lady 065 E A

Act. BW	Adj. 205 Wt	Dam WR	Adj. 365 Wt	Gain
70	733	11@98	1275	3.39
BW	WW	Milk	YW	
-1.6	35	30	68	

+ 12 CED. Dam is the best uddered cow on the ranch. Cow maker. (3.45 WDA)

88

A C Charlo 095

Reg. No. 19976834 | Tattoo: 95 | DOB: 4/26/20

Coleman Charlo 0256

O C C Paxton 730P

A C Coleman Charlo 60

Bohi Abigale 6014

Coleman Dixie Erica 470

Coleman Manning 0299

Coleman Dixie Erica 1611

A C Jr 388

A C VRD 986

A C Blackbird Blossom 856

A C Blackbird Blossom 711

A C Blackbird Blossom 623

L A Traveler 51

A C Blackbird Blossom 442

Act. BW	Adj. 205 Wt	Dam WR	Adj. 365 Wt	Gain
60	723	1@101	1195	2.95
BW	WW	Milk	YW	
-2.3	36	26	71	

A younger bull but don't cut him short. He will work on your heifers. (3.14 WDA)



A C SHORTSTACK 782
SIRE OF LOT 90

87

A C Charlo 016

Reg. No. 19976803 | Tattoo: 16 | DOB: 3/17/20

Coleman Charlo 0256

O C C Paxton 730P

A C Coleman Charlo 60

Bohi Abigale 6014

Coleman Dixie Erica 470

Coleman Manning 0299

Coleman Dixie Erica 1611

Best Box Cross 291

LAR Alliance 64L

A C Princess 814

Marie 8005 of Best Angus

A C Princess 976

GDAR Dateline 354

A C Princess 500

Act. BW	Adj. 205 Wt	Dam WR	Adj. 365 Wt	Gain
60	660	1@100	1198	3.36
BW	WW	Milk	YW	
-2.8	30	30	60	

Another Charlo X Box Cross. 112 gain ratio. Heifer Bull Deluxe. (3.06 WDA)

89

A C Charlo 069

Reg. No. 19976824 | Tattoo: 69 | DOB: 4/1/20

Coleman Charlo 0256

O C C Paxton 730P

A C Coleman Charlo 60

Bohi Abigale 6014

Coleman Dixie Erica 470

Coleman Manning 0299

Coleman Dixie Erica 1611

BA New Design 511

BA New Design 316

A C Polly 891

BA Miss Design378

S R Polly 061

S R Great Plains 821

S R Polly 804

Act. BW	Adj. 205 Wt	Dam WR	Adj. 365 Wt	Gain
75	697	1@98	1217	3.25
BW	WW	Milk	YW	
-0.1	41	27	81	

Another good heifer bull prospect. 106 gain ratio. Nice dam. (3.16 WDA)

90

A C Short Stack 067

Reg. No. 19976823 | Tattoo: 67 | DOB: 3/31/20

A C Short Stack 312

A C Tracker 848

A C Short Stack 782

A C Princess 021

A C Cash Lass 289

FCC Priority 550W

A C Cash Lass 965

ARROW Final Answer 3582

S A V Final Answer 0035

A C Blackbird Blossom 603

L A Polly 567

A C Blackbird Blossom 4111

Best Right Time 277

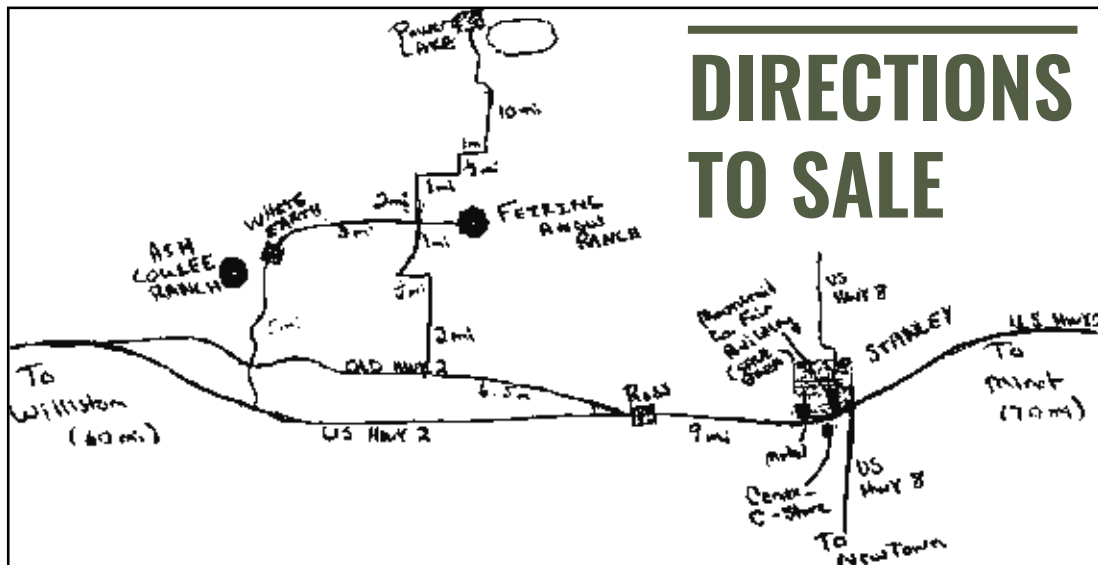
A C Blackbird Blossom 470

Act. BW	Adj. 205 Wt	Dam WR	Adj. 365 Wt	Gain
70	726	2@94	1267	3.38
BW	WW	Milk	YW	
-1.0	36	27	66	

Heifer bull. +11 CED. He's got some stoutness too. (3.44 WDA)

**THERE ARE TWO TYPES OF CATTLE TODAY,
CORN CATTLE & GRASS CATTLE.**

**OUR MANY YEARS OF EXPERIENCE HAS TAUGHT US GRASS CATTLE
WILL WORK IN A CORN ENVIRONMENT, HOWEVER CORN CATTLE
ARE NOT SUSTAINABLE IN A GRASS ENVIRONMENT.**



Watch & bid online for **FREE** at

DVAuction
Broadcasting Real-Time Auctions

Can't make the sale? Bid from home with DV Auction's "real-time" internet bidding service!

Buying online is as easy as 1, 2, 3...

1. Create an account at www.dvauction.com under the "register" tab
2. Apply for bidding approval by clicking on the "details" tab at least 24 hours prior to the auction-a DV representative will notify you once you have been approved
3. Tune in for the sale and make your purchases!

After the sale, contact the sale manager or owner to arrange transportation and payment. **High speed internet** is required for successful bidding-be sure to check the lag-time monitor in the top left corner to ensure real-time broadcasts.

Proxy Bidding-if you can't make time to watch the sale, register a proxy bid and let our system represent your bid while you're away. Look for the "proxy bid" tab on the auction listing, and fill in your maximum bids. We'll handle the rest!

Having troubles? During the auction, you can type a message to the operator at any time for assistance. Our full-time support team can also always be reached at (402) 474-5557.



DVAuction
Broadcasting Real-Time Auctions

Full Service Livestock Marketing

Video - Photography - The Stock Exchange - Ring Service - Banner Ads - Onsite Viewing Service



6698 94th Ave. NW
Powers Lake, ND 58773

REAL BULLS FOR THE REAL RANCHER

**PASTURE TO PLATE FOCUSED
CONVENIENCE & ECONOMIC TRAIT DRIVEN**

27TH ANNUAL PRODUCTION SALE
SATURDAY, APRIL 17, 2021
FEIRING ANGUS RANCH | 1:00 PM CDT
3 MILES EAST OF WHITE EARTH, ND

80 YEARLING BULLS [ANGUS & RED ANGUS]
4 TWO-YEAR-OLD BULLS [RED ANGUS]
180 COMMERCIAL YEARLING HEIFERS
[BWF, BLACK & RED ANGUS]

Catalog designed by
 **Generation 6**
marketing
www.generation6.co