

**Quality Red Angus Cattle Bred to Function Efficiently**



Female Sale

**Friday, November 6, 2020**

**At the Ranch, Plevna, MT • 1 p.m. MDT**

**DVAuction** Broadcasting  
Real-time Auctions

Selling Over  
**250 Females**

Catalog & videos available  
online early October at  
[www.milkcreekreds.com](http://www.milkcreekreds.com)

**Mature Bred Cows • Bred Heifers  
Open Heifers • Commercial Bred Heifers  
Embryos • Rare Semen Packages**



# Welcome



Welcome to our 2020 female sale!

This is a sale that we host every three years and so we thank you for taking the time to review the information that we have compiled within this catalog and for having interest in our program. We hope that what you find within these pages is helpful for you to get an understanding of our program that has developed the genetics that are being offered.

Within this sale, we are offering all of our 2009, 2010 and 2011 females that remain after our environment and management has put them through a rigorous test, along with 25 bred heifers and heifer calves that have been selected through criteria explained later. We are also offering a nice selection of commercial females that we and our customers have raised that will become a nice set of Red Angus cows to work in your commercial herd. For anyone who might be interested in frozen genetics we will be selling some embryos out of some of our top cows as well as some rare semen that we have used over the years.

During our selection process of females in other sales, we discover the challenges of finding breds and opens that fit our criteria that we use to select females to be considered in this sale. If you are a purebred breeder take the time and look at your replacement bred heifers and heifer calves and see how many have dams and grand dams with a MPPA of 100 or better as well as their own weaning index of 100 or better. Following that make sure that you have representation of the different sires that you have used in each group. All of the females have 2 out of the 3 criteria and several have all 3 criteria above 100. We hope that through this criteria we have selected females that will have the productivity and longevity to be profitable for their new owners.

Our program would not be considered typical to most people when it comes to the management that we use within our operation. We are striving to build a cowherd that will best function within the environment that the ranch is placed in with the least amount of inputs from outside sources to hopefully produce profitability now and for the future. Some management tools used in this process include running our replacement heifer calves in large pastures after fence line weaning without any grain supplement. If we run out of grass or it snows under to where they can't dig it out we will supplement some grass/alfalfa hay until green grass appears. Another tool is turning large groups of females (55-107) into single sire breeding groups to force the male side of the equation to be tested. This will cause some breeding failure at times but also will develop bulls to work harder and become better breeders.

We look forward to visiting with those of you who would like to learn more of what we do and why we do the things we do. If you have any questions or are in need of additional information on the animals offered within these pages, feel free to contact us.

May God Bless You,  
Bruce, Tena, Jaclyn Ketchum and Jeff, Cele, Blaze Menees

*As servants of the Lord, we are striving  
to be stewards of the land and cattle  
that He created and allowed us to  
manage so that we may glorify Him.*



**Quality Red Angus Cattle Bred to Function Efficiently**



Bruce & Tena Ketchum  
1721 Plevna Road  
Plevna, MT 59344  
(406) 778-3819  
ketchum@midrivers.com  
www.milkcreekreds.com





## Milk Creek Reds Female Sale Friday, Nov. 6, 2020

1 p.m. MDT • Milk Creek Reds Ranch • Plevna, MT

## Sale Information

**Selling:**  
**23 Bred Mature Cows**  
**25 Bred Heifers**  
**25 Open Heifer Calves**  
**6 Embryo Packages**  
**14 Rare Semen Packages**

### SALE DAY LUNCH:

Complimentary lunch and pie will be served at 11:30 a.m.

### SALE LOCATION:

At the Ranch (see map on page 2 for directions)  
 1721 Plevna Road, Plevna, MT ..... 406-778-3819

### CATTLE VIEWING:

The sale cattle can be viewed at the ranch until sale time. Please contact us if you would like to view the cattle prior to November 4 so we can accommodate you. Please join us Thursday evening, November 5, for a gathering of fun, food and fellowship at the ranch.

### SALE ORDER:

The cattle will be penned outside on sale day and the sale will be a video auction. The cattle will sell in catalog order. The sale will begin at 1:00 p.m. MDT.

### SALE FORMAT:

This sale will be a video sale with the cattle located outside the facility. We will have an auctioneer that will auction the sale in a relaxed atmosphere. Each interested buyer will be able to bid on the female of their choice with low pressure and the ability to be comfortable.

Online bidding will take place on DVAuction. Go to [www.dvauction.com](http://www.dvauction.com).

### SALE VIDEO

The video of the sale cattle will be available to view at [milkcreekreds.com](http://milkcreekreds.com), [DVAuction.com](http://DVAuction.com) or [billpeltonlivestock.com](http://billpeltonlivestock.com) by October 7, 2020. If you don't have high speed internet or are unable to view the video over the internet, contact us for a DVD on the sale cattle.

### PHONE ORDERS

Buyers unable to attend the sale may call or send their bids to the owners, Bruce or Tena Ketchum. If you would like to discuss the sale offering, call us and describe your needs and budget and we can select your genetics for you. We can bid on the animal for you and you pay only the bid price established by the auction. Bids are handled in confidence on all orders. If there are several people needing to use this method for the sale we will set up a conference call for you to call into during the sale. Please call a few days in advance if this is needed so that we may set this up and get you the necessary phone number and information ahead of sale time.

### SALE CONTACTS:

#### Milk Creek Reds

Bruce and Tena Ketchum ..... 406-778-3819 (Home)  
 ..... 406-978-3819 (Cell)

#### Auctioneer:

Scott Weishaar ..... 701-872-5299

#### Videos:

DVAuction ..... 406-978-2124

#### DV Auction:

Jay Rost ..... 406-978-2124

### AIR TRANSPORTATION

Billings, Mont. .... 230 miles  
 Rapid City, S.D. .... 190 Miles  
 Bismark, N.D. .... 230 miles

### LIABILITY

All persons who attend the sale or view the cattle do so at their own risk. The owners assume no liability, legal or otherwise, for any accidents that occur on the sale or viewing premises.

### ACCOMMODATIONS:

#### Baker, Mont.

(If planning to stay please reserve early as the oil field activity can cause room shortages.)

Montana Motel ..... 406-778-3315  
 Red River Inn ..... 406-778-3321

#### Miles City, Mont.

Sleep Inn & Suites ..... 406-232-3000  
 Miles City Inn & Suites ..... 866-599-6674

### TERMS

The terms of the sale are cash. All settlements will be made with clerks of the sale immediately following the conclusion of the sale and before any cattle will be released. We will follow the Terms and Conditions set forth by the Red Angus Association of America. Announcements made by seller on sale day take precedence over any statements printed in this catalog or advertisement.

### TRANSPORTATION

Transportation is at buyer's expense. For those bringing trailers sale day we will arrange to have the cattle loaded out immediately after the sale. Please let the registration table know that you would like to load after the sale when you pick up your buyer's number. We will work with customers to arrange for delivery with trucking firms of the buyer's choice. We will try to pool cattle together going similar directions to conserve transportation expenses for buyers.

### TRUCKING

Woolsey Trucking ..... 406-670-1877  
 Lathrop Trucking ..... 847-426-5009  
 Gary Leibrand ..... 406-580-3025

### HERD HEALTH PROGRAM

Heifer calves are vaccinated with Vision 7 at branding, Bovishield Gold One shot and Vision 7 Somnus in September and will be poured with Dectomax prior to the sale.

All sale females will be Bangs vaccinated and will have readable tags and tattoos for shipment.

The bred heifers are vaccinated as calves similar to the heifer calves. This spring they were vaccinated with PregGuard 10. They will be poured with Dectomax prior to the sale.

The mature cows are vaccinated with PregGuard 10 in the spring and will be poured with Dectomax prior to the sale.

All bred females were ultrasounded for pregnancy by Fallon County Vet Service and that data is available in this catalog on each lot.

### CATALOG & PROMOTION:

Tracey Koester, Cow Camp Promotions ..... [www.cowcamppromotions.com](http://www.cowcamppromotions.com)



# Sale Information



## WATCH AND BID ONLINE AT DVAUCTION.COM

### Can't make the sale?

We are pleased to bring you real-time Internet bidding and a live broadcast of this sale through DV Auction. To watch or bid online, simply complete the following steps:

- Visit the DVAuction web site at [www.dvauction.com](http://www.dvauction.com)
- Click on the "Register" tab
- Enter a user name, password and your contact information.
- Click on "Apply for Bidding."
- Select the sale from the list of other auctions and click "Apply".
- Complete the process by filling out the Banking & Lending information requested.

Be sure to include a personal contact at your bank, we will contact them in order to get a credit reference.

If you would prefer to be approved using your credit card, call (402) 474-5557.

Please be sure to apply for bidding at least a day in advance of the sale—every effort will be made to process your application in a timely manner.

DVAuction will contact you once you have been approved to bid. We do not provide buyer numbers until you have purchased a lot in the sale, and that number is only usable for that auction. After the sale contact the sale owner or manager to make arrangements for payment and delivery of your online purchases.

**Please Note:** High speed Internet access (DSL, T-1, or Broadband) is required to be able to bid successfully during the sale. If you have any questions, please contact DVAuction at (402) 474-5557 or email [support@dvauction.com](mailto:support@dvauction.com).

**Proxy Bidding:** If you can't access a computer during the sale, you can now place a "proxy bid" through DVAuction. Simply follow the instructions listed above, and as the sale date nears there will be a "Proxy Bidding" link under the sale listing on the main page of DVAuction. You can then place the maximum amount that you'd like to bid, and our system will represent your bid just as if you were there.

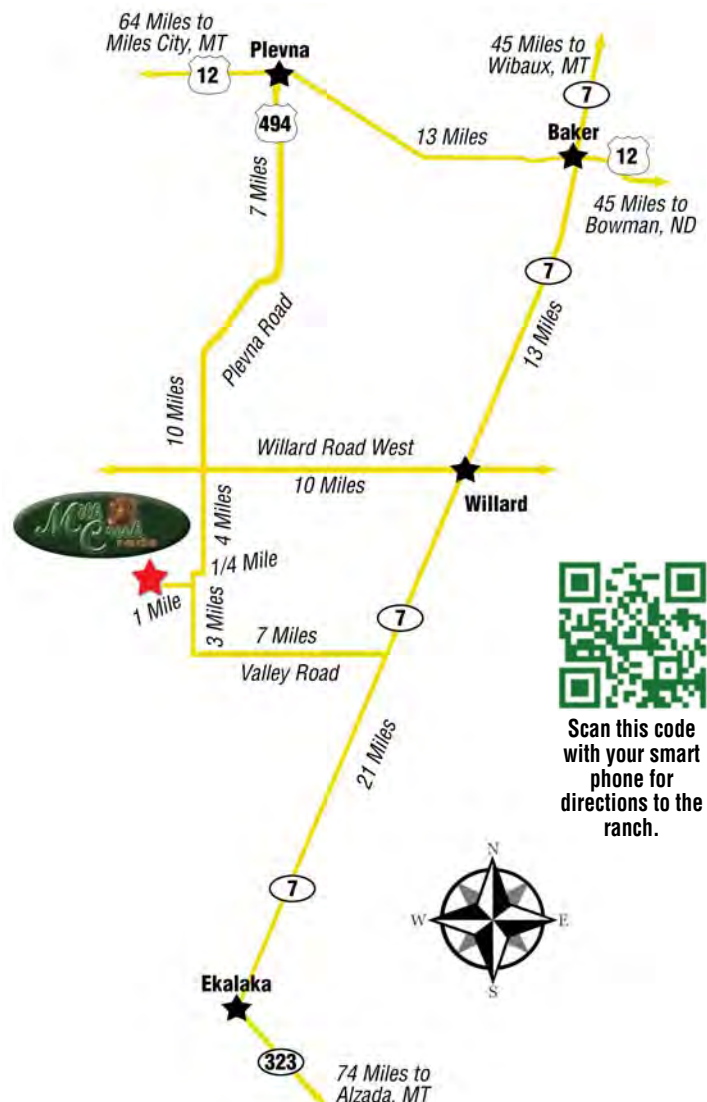
**Can't make the sale?  
Watch it LIVE and bid in  
real-time on**

***DVAuction***  
**Broadcasting Real-Time Auctions**

[www.dvauction.com](http://www.dvauction.com)

Technical Support

(402) 474-5557 | [support@dvauction.com](mailto:support@dvauction.com)



Scan this code  
with your smart  
phone for  
directions to the  
ranch.



# RED ANGUS GUIDE TO EPDS

- HB** – HerdBuilder is a maternally focused selection index that predicts the probability of developing profitable cowherd traits while maximizing the value of marketed progeny. Expressed as dollars per cow exposure, HB is calculated based on the scenario that bulls are mated to heifers and cows, replacement heifers are retained, and all remaining progeny are marketed on a quality-based carcass grid. (Index/High Value)
- GM** – GridMaster is a terminally focused selection index that predicts the probability to increase the value of marketed calves. GM places selection pressure on growth, feedyard performance and carcass quality, predicting differences in profit as expressed per cow exposure. GM is calculated based on the scenario that bulls are mated to cows only, and all progeny are marketed on a quality-based carcass grid. (Index/High Value)
- CED** – Calving Ease Direct predicts differences in the percent of calves born unassisted out of 2-year-old dams. (Percent/High Value)
- BW** – Birth Weight predicts differences in actual birth weight of progeny. (Pounds/Low Value)
- WW** – Weaning Weight predicts differences in 205-day weaning weight. (Pounds/High Value)
- YW** – Yearling Weight predicts differences in 365-day yearling weight. (Pounds/High Value)
- ADG** – Average Daily Gain predicts differences in weight gain between 205 and 365 days of age. (Pounds/High Value)
- DMI** – Dry Matter Intake predicts differences in daily feed intake as measured in a feedlot during the post-weaning period. (Pounds/Low Value)
- MILK** – Milk predicts differences in weaning weight attributed to the milking ability of the animal's daughters. (Pounds/High Value)
- HPG** – Heifer Pregnancy predicts differences in the percent of daughters who are able to conceive and calve at 2 years of age following exposure to breeding. (Percent/High Value)
- CEM** – Calving Ease Maternal predicts differences in the percent of daughters who are able to calve unassisted as 2-year-old heifers. (Percent/High Value)
- STAY** – Stayability predicts differences in the ability of an animals' retained daughters to remain productive in the herd – calve every year – through 6 years of age. (Percent/High Value)
- MARB** – Marbling predicts differences in marbling score – amount of intramuscular fat measured at the 13th rib. (Marbling Score Units/High Value)
- YG** – Yield Grade predicts differences in USDA Yield Grade, which is calculated using CW, REA and Fat. (Yield Grade Units/Low Value)
- CW** – Carcass Weight predicts differences in actual hot carcass weight. (Pounds/High Value)
- REA** – Ribeye Area predicts differences in square inches of ribeye area measured at the 13th rib. (Square Inches/High Value)
- FAT** – Fat predicts differences in the depth of backfat measured between the 12th and 13th ribs. (Inches/Low Value)

**Ranch Tested. Rancher Trusted.**

## Red Angus

**For more information, visit [RedAngus.org](http://RedAngus.org).**





# Reference Sires



**RIDGE LEGEND 2069**



REG. #1545794

## RIDGE LEGEND 2069

TATTOO: 2069 OTT BD: 2/19/12 100% 1A

5L LAKOTA LEGEND 7074  
5L LEGEND 1553-425V  
5L HAZEL 45L-1553

[O C C LEGEND 616L  
[BASIN LAKOTA C999  
[5L NORSEMAN KING 2291  
[LA TRAVLIN 124 HAZEL 45  
[LCHMN GRANDCANYON 1244G  
[NORSEMAN 1312 PJM  
[MLK CRK FLAGSTONE  
[RIDGE AQUILA 366-213ET

5L NORMANDY CANYON 6024  
RIDGE AQUILA 552-8066  
RIDGE AQUILA 213-552

BW/Ratio	73	90
VW/Ratio	624	100
YW/Ratio	1079	97
ADG/Ratio	2.85	97
%IMF/Ratio	2.94	90
REA/Ratio	13.2	102
Fat/Ratio	0.43	138
Dam's MPPA/Age	108	4

HB	GM	CED	BW	WW	YW	ADG	DMI	M	ME	HPG	CEM	ST	MARB	YG	CW	REA	FAT
154	43	16	-1.3	38	63	0.16	1.15	24	-6	5	8	16	0.12	0.08	4	-0.14	0.02
64%	97%	13%	56%	97%	95%	86%	29%	54%	20%	98%	35%	38%	94%	37%	94%	81%	45%

The 2069 young females in our herd are the reason that we continue to use this sire. They are moderate, dark red and good footed with beautiful udders. We have used him cleanup on heifers for the first three breeding seasons and are using him on cows through A.I. as we sold him as a 5-year-old bull back to Sandbur Ridge Red Angus.



**RIDGE ADMIRAL 3411**



REG. #1589182

## RIDGE ADMIRAL 3411

TATTOO: 3411 OTT BD: 2/5/13 100% 1A

5L LAKOTA LEGEND 7074  
5L LEGEND 1553-425V  
5L HAZEL 45L-1553

[O C C LEGEND 616L  
[BASIN LAKOTA C999  
[5L NORSEMAN KING 2291  
[LA TRAVLIN 124 HAZEL 45  
[5L GRAND EXPRESS 453-5655  
[MLK CRK SHEBA 043  
[HOLDEN HI HO 753  
[PANHANDLE GRANDIOSE 435

MLK CRK EXPRESS 9127  
RIDGE GRANDIOSE 629-1112  
RIDGE GRANDIOSE 435-629

BW/Ratio	77	105
VW/Ratio	675	112
YW/Ratio	1217	111
ADG/Ratio	3.38	109
%IMF/Ratio	4.6	104
REA/Ratio	12.8	103
Fat/Ratio	0.53	130
Dam's MPPA/Age	106	2

HB	GM	CED	BW	WW	YW	ADG	DMI	M	ME	HPG	CEM	ST	MARB	YG	CW	REA	FAT
199	47	13	-2.6	48	86	0.24	1.53	24	-1	27	5	17	0.52	0.16	27	0.26	0.07
9%	51%	47%	34%	88%	70%	37%	60%	57%	38%	1%	84%	25%	26%	78%	34%	15%	98%

We continue to use Ridge Admiral in our A.I. sire lineup because of how his progeny perform in our environment. The bulls have been well received by our commercial as well as registered customers and the oldest females are now 5 years old and bringing in good calves while functioning very well in our environment.



**MUSHRUSH IMPACT Z352**



REG. #1589455

## MUSHRUSH IMPACT Z352

TATTOO: Z352 MUS BD: 8/31/12 100% 1A

BUF CRK LANCER R017  
MUSHRUSH IMPRESSIVE CA U236  
MUSHRUSH MADAM LT R265

[BECKTON LANCER F442 T  
[BUF CRK JULIET N036  
[TR JULIAN LT142  
[MUSHRUSH ROBIN M125  
[BECKTON JULIAN GG B571  
[BECKTON ANNIE F743 LN  
[BECKTON EPIC R415 KM  
[MUSHRUSH ROBIN M125

BECKTON JULIAN G1 J526  
MUSHRUSH ZENA JL X320  
MUSHRUSH ZENA EP U339

BW/Ratio	54	82
VW/Ratio	672	105
YW/Ratio	1086	104
ADG/Ratio	2.57	103
%IMF/Ratio	3.11	101
REA/Ratio	12.7	101
Fat/Ratio	0.19	104
Dam's MPPA/Age	89	2

HB	GM	CED	BW	WW	YW	ADG	DMI	M	ME	HPG	CEM	ST	MARB	YG	CW	REA	FAT
213	47	17	-7.2	59	92	0.21	1.44	26	1	15	9	20	0.48	0.18	15	0.11	0.08
3%	60%	7%	1%	57%	58%	58%	53%	35%	56%	7%	20%	8%	32%	85%	71%	35%	99%

We are pleased to offer some Z352 progeny which is an A.I. sire that has given us great results from low birth weights and calving ease to above-average weaning and yearling ratios. These progeny do not have your typical low birth weight, calving-ease look, but instead they have rib shape and muscle which can catch your eye.





# Reference Sires



RED CROWFOOT REDMAN 3107A



REG. #1665754

## RED CROWFOOT REDMAN 3107A

RED RMJ REDMAN 1T  
RED LAZY MC REDMAN 94Y  
RED BROX ICECAP 1R

RED CROWFOOT MOONSHINE 8081U  
RED CROWFOOT BRNDINA 1103Y  
RED CROWFOOT BRNDINA 6378S

TATTOO: 3107A CFCC	BD: 2/21/13	100% 1A
[5L NORSEMAN KING 2291 [CROWFOOT KURUBA 4033P	BW/Ratio	53 100
[RED CANYON CREEK SENSATION [RED BROX ICECAP 62N	WW/Ratio	597 100
[CROWFOOT 6004S [RED CROWFOOT BRNDINA 6359S	YW/Ratio	
[RED YY HEAT 902J [RED CROWFOOT BRNDINA 2067M	ADG/Ratio	
	%IMF/Ratio	
	REA/Ratio	
	Fat/Ratio	
	Dam's MPPA/Age	100 2

HB	GM	CED	BW	WW	YW	ADG	DMI	M	ME	HPG	CEM	ST	MARB	YG	CW	REA	FAT
193	45	20	-4.9	42	64	0.14	1.09	16	-15	13	10	17	0.49	0.09	2	-0.08	0.04
13%	85%	1%	8%	95%	95%	92%	25%	95%	3%	22%	8%	32%	31%	39%	96%	71%	72%

We purchased Redman in the Crowfoot dispersion in Canada because we really liked his dam and needed a calving-ease bull. We continue to use Redman A.I. on heifers and some older cows. We like the type of female that he is leaving in our herd with good shape and type.



MLK CRK ADVOCATE 4304



REG. #1685793

## MLK CRK ADVOCATE 4304

5L ADVOCATE 817-14W  
5L SECRET AGENT 117-229Z  
5L ROXIE 854-117

MLK CRK REDSTONE  
MLK CRK SHEBA 1014  
MLK CRK SHEBA 966X

TATTOO: 4304 BTK	BD: 3/13/14	100% 1A
[5L SIGNATURE 5615 [5L MARTA 345-817	BW/Ratio	82 98
[5L SIGNATURE 5615 [XXX ROXIE 854 MR	WW/Ratio	815 120
[TR JULIAN LT142 [MLK CRK LENA 763	YW/Ratio	1286 116
[BECKTON EPIC R397 K [MLK CRK SHEBA 333	ADG/Ratio	2.93 110
	%IMF/Ratio	4.71 150
	REA/Ratio	14.3 114
	Fat/Ratio	0.38 150
	Dam's MPPA/Age	104 3

HB	GM	CED	BW	WW	YW	ADG	DMI	M	ME	HPG	CEM	ST	MARB	YG	CW	REA	FAT
179	49	3	1.3	80	111	0.19	1.88	18	-4	23	-2	18	0.78	0.13	14	0.2	0.07
28%	32%	99%	91%	4%	21%	69%	85%	92%	24%	1%	99%	17%	5%	64%	75%	22%	98%

We have calved our third crop of daughters out of 4304 and are very pleased with their fleshing ability, moderate size, feet and leg structure and calving ease. The 4304 daughters are the largest sire group in our cow herd because of the ability of this sire to produce higher performance with good carcass and leave the right size and kind of females in the herd. Progeny and semen available in the sale.



5L THE REAL DEAL 1687-143B



REG. #1701634

## 5L THE REAL DEAL 1687-143B

5L ADVOCATE 817-14W  
5L DEFENDER 560-30Z  
5L BLACK ADINA 525-560

5L DESTINATION 893-621S  
5L FIREFLY 275-1687  
5L FIREFLY 2573-275

TATTOO: 143B FLR	BD: 2/16/14	100% 1A
[5L SIGNATURE 5615 [5L MARTA 345-817	BW/Ratio	78 96
[TC STOCKMAN 365 [5L ADINA 293-525	WW/Ratio	715 111
[5L DIRECT FIRE 1641-6443 [5L ADINA 525-893	YW/Ratio	1314 116
[5L NORSEMAN KING 2291 [5L FIREFLY 190-2573	ADG/Ratio	3.74 122
	%IMF/Ratio	4.52 92
	REA/Ratio	13.8 108
	Fat/Ratio	0.31 114
	Dam's MPPA/Age	105 7

HB	GM	CED	BW	WW	YW	ADG	DMI	M	ME	HPG	CEM	ST	MARB	YG	CW	REA	FAT
151	51	13	-0.7	69	123	0.33	2.94	21	6	13	7	12	0.7	0.04	41	0.27	0
68%	14%	44%	67%	21%	8%	3%	99%	76%	84%	22%	42%	82%	8%	20%	7%	15%	8%

The Real Deal progeny have more depth of rib and capacity than most other sires that we have used. The females that we saw at 5L make us excited for the females to start producing in our herd.





# Reference Sires



RED MINBURN COPENHAGEN 3Y



REG. # 2400918

## RED MINBURN COPENHAGEN 3Y

TATTOO:

BD: 2/5/11 100%

5L NORSEMAN KING 2291  
**RED RMJ REDMAN 1T**  
CROWFOOT KURUBA 4033P

[VGW KING OF THE WEST  
[NORSEMAN 1312 PJM  
[O C C HUNTER 928H  
[RED CROWFOOT KURUBA 2030M  
[STEVENSON FORTUNE 425C  
[CRESCENT CREEK ROSEBUD 115F  
[MINBURN LANCER 11B  
[EVERBLACK MAY 86S

CRESCENT CREEK MAIN EVENT 6H  
**MINBURN MAY 112M**  
MINBURN MAY 90G

BW/Ratio	88	
WW/Ratio	798	100
YW/Ratio	1319	100
ADG/Ratio		
%IMF/Ratio		
REA/Ratio		
Fat/Ratio		
Dam's MPPA/Age		9

HB	GM	CED	BW	WW	YW	ADG	DMI	M	ME	HPG	CEM	ST	MARB	YG	CW	REA	FAT
142	45	11	-0.7	62	94	0.2	1.55	24	-17	11	7	13	0.14	0.14	16	-0.05	0.04
78%	89%	73%	67%	42%	53%	64%	63%	54%	1%	46%	44%	73%	93%	68%	67%	66%	74%

Copenhagen is a new A.I. sire in our lineup with his progeny born this spring being the first we have had. We found progeny of this bull at the U2 ranch in Canada four years ago while touring through their pastures viewing cattle. His daughters impressed us as to their type and kind that we like to a point that every cow we asked Joanne Unger what she was out of it would end up being a Copenhagen daughter. We viewed Copenhagen as an 8-year-old bull and found him to be very sound and holding his condition. When U2 dispersed last year, everyone else found the Copenhagen daughters as well and they were one of the highest selling sire groups in a record-setting sale.



MLK CRK FUSION 5202



REG. # 3468393

## MLK CRK FUSION 5202

TATTOO: 5202 BTK

BD: 2/12/15 100% 1A

ANDRAS IN FOCUS B175  
**ANDRAS FUSION R236**  
ANDRAS BELLE B167

[MYTTY IN FOCUS  
[DI ESTONIA 316  
[ANDRAS THUNDER B105  
[ANDRAS BELLE 416  
[5L NORSEMAN EXPRESS  
[5L RUBY 01-453  
[GLACIER CHATEAU 744  
[MLK CRK SHEBA 055

5L GRAND EXPRESS 453-5655  
**MLK CRK SHEBA 900**  
MLK CRK SHEBA 403

BW/Ratio	82	93
WW/Ratio	687	102
YW/Ratio	1143	104
ADG/Ratio	2.85	109
%IMF/Ratio	3.44	121
REA/Ratio	14.3	114
Fat/Ratio	0.14	60
Dam's MPPA/Age	98	6

HB	GM	CED	BW	WW	YW	ADG	DMI	M	ME	HPG	CEM	ST	MARB	YG	CW	REA	FAT
187	49	17	-5	41	73	0.2	0.97	26	-5	13	13	15	0.65	0	30	0.3	0
18%	28%	7%	7%	95%	88%	63%	17%	35%	20%	27%	1%	54%	12%	10%	25%	12%	12%

Fusion 5202 is a bull that Leland Red Angus selected out of our 2016 sale. He has been a good calving-ease bull for them and has provided both bulls and heifers that have been well received by their customers. His dam sells as lot 9 in the sale and at 11 years of age, she still has as good of feet and udder as they get. We used this sire on many of our yearling heifers this spring.



RIDGE PROVISION 6013



REG. # 3552198

## RIDGE PROVISION 6013

TATTOO: 6013 OTT

BD: 1/29/16 100% 1A

BUF CRK THE RIGHT KIND U199  
**5L ADVANTAGE 3267-221Y**  
5L ADINA 195-3267

[BUF CRK LANCER R017  
[BUF CRK SHOSHONE R353  
[5L TRADITION 203-6145  
[5L ADINA 2113-195  
[5L MTN NORSE 71-7994  
[5L OSCE 233-1425  
[MUSHRUSH LTJULIAN LG S005  
[RIDGE MONA 303-620

5L ZENITH 1425-5767  
**RIDGE MONA 8162-2057**  
RIDGE MONA 620-8162

BW/Ratio	70	89
WW/Ratio	711	116
YW/Ratio	1200	104
ADG/Ratio	3.05	91
%IMF/Ratio	5.46	130
REA/Ratio	13.1	93
Fat/Ratio	0.35	125
Dam's MPPA/Age	105	4

HB	GM	CED	BW	WW	YW	ADG	DMI	M	ME	HPG	CEM	ST	MARB	YG	CW	REA	FAT
185	47	12	-3	54	84	0.19	0.94	28	-7	14	6	18	0.3	0.02	5	-0.08	0
21%	54%	58%	28%	72%	72%	70%	16%	21%	16%	13%	60%	24%	68%	13%	92%	71%	12%

We used 6013 A.I. on both heifers and cows and then used him naturally on 52 2-year-old heifers where he held his flesh well and had only three open cows in his group. By using this bull hard we have recorded 65 progeny this past year and 66 progeny the previous year which allows us to determine his genetic merit within our herd. We are about to start calving his first daughters and they look to be the right kind of heifers.





# Reference Sires



5L VIGILANTE 2674-11D



REG. #3565034

## 5L VIGILANTE 2674-11D

TATTOO: 11D	FLR	BD: 1/29/16	100%	1A
5L ADVANTAGE 3267-221Y	5L ADINA 195-3267	BW/Ratio	55	83
5L BOURNE 117-48A	5L SIGNATURE 5615	WW/Ratio	577	92
5L ROXIE 854-117	XXX ROXIE 854 MR	YW/Ratio	1049	96
5L DEFENDER 560-30Z	5L ADVOCATE 817-14W	ADG/Ratio	2.94	102
5L OPAL 930-2674	5L BLACK ADINA 525-560	%IMF/Ratio	6.45	126
5L OPAL 2218-930	5L TRADESMAN 1715-6237	REA/Ratio	11.1	88
	5L OPAL 656-2218	Fat/Ratio	0.32	139
		Dam's MPPA/Age	98	2

HB	GM	CED	BW	WW	YW	ADG	DMI	M	ME	HPG	CEM	ST	MARB	YG	CW	REA	FAT
175	47	16	-5.4	51	82	0.2	1.5	22	-4	15	6	16	0.65	0.22	9	-0.15	0.07
34%	63%	12%	5%	82%	76%	63%	59%	67%	24%	10%	73%	44%	12%	94%	85%	83%	98%

Vigilante is an A.I. sire that we have used the past two years on heifers and cows. The heifers bred to him calved easy and his progeny were above average for weaning and yearling ratios. We really like the moderate frame and shape that he puts in his progeny.



HRR ADVANTAGE 6120



REG. #3572939

## HRR ADVANTAGE 6120

TATTOO: 6120	BCO	BD: 3/2/16	100%	1A
BUF CRK THE RIGHT KIND U199	BUF CRK LANCER R017	BW/Ratio	76	90
5L ADVANTAGE 3267-221Y	BUF CRK SHOSHONE R353	WW/Ratio	644	104
5L ADINA 195-3267	5L TRADITION 203-6145	YW/Ratio	1081	102
MLK CRK EXPRESS 9127	5L ADINA 2113-195	ADG/Ratio	2.72	98
HRR BANA 309	5L GRAND EXPRESS 453-5655	%IMF/Ratio	2.42	98
HRR BANA 193	MLK CRK SHEBA 043	REA/Ratio	12.2	94
	HRR KNIGHT 956	Fat/Ratio	0.2	93
	HRR BANA 860	Dam's MPPA/Age	100	3

HB	GM	CED	BW	WW	YW	ADG	DMI	M	ME	HPG	CEM	ST	MARB	YG	CW	REA	FAT
177	46	14	-3.4	56	84	0.17	1.09	21	-4	14	9	16	0.33	0.06	7	-0.16	0
31%	68%	32%	22%	66%	73%	79%	24%	79%	24%	14%	18%	46%	61%	25%	90%	84%	14%

6120 is a sire that we bought from Heart River Ranch. He is an easy-fleshing, deep-made Advantage son that stamps his progeny with a dark color pattern. His first daughters in production have nice udders and are good footed like their sire.



5L BOURNE 117-48A, sire



REG. #3744501

## 5L FOREMAN 2174-370E

TATTOO: 370E	FLR	BD: 3/19/17	100%	1A
5L ADVANTAGE 3267-221Y	BUF CRK THE RIGHT KIND U199	BW/Ratio	63	80
5L BOURNE 117-48A	5L ADINA 195-3267	WW/Ratio	674	119
5L ROXIE 854-117	5L SIGNATURE 5615	YW/Ratio	1145	115
O C C EMBLAZON 854E	XXX ROXIE 854 MR	ADG/Ratio	2.93	108
5L ADINA 1551-2174	D H D TRAVELER 6807	%IMF/Ratio	5.11	120
5L ADINA 525-1551	DIXIE ERICA OF C H 1019	REA/Ratio	14	109
	HOLDEN HI HO 574	Fat/Ratio	0.27	164
	5L ADINA 293-525	Dam's MPPA/Age	106	13

HB	GM	CED	BW	WW	YW	ADG	DMI	M	ME	HPG	CEM	ST	MARB	YG	CW	REA	FAT
211	48	18	-4.6	69	105	0.22	2.12	25	-4	15	6	19	0.63	0.1	22	0.33	0.06
4%	44%	6%	10%	20%	29%	46%	94%	46%	24%	7%	67%	11%	14%	49%	48%	10%	96%

Foreman is a new A.I. sire from 5L that we used this spring that has the pedigree and EPD profile that will fit well in our program. We used him on both heifers and cows to get a good test across our female base.





# Reference Sires



5L FAST BREAK 117-324E



REG. #3744611  
5L BLAZIN KIND 189-228Y  
5L HOT SHOT 2370-186A  
5L MARTHA 425-2370

5L SIGNATURE 5615  
5L ROXIE 854-117  
XXX ROXIE 854 MR

## 5L FAST BREAK 117-324E

IATTOO: 324E FLR BD: 3/14/17 100% 1A

BW/Ratio	66	84
WW/Ratio	611	108
YW/Ratio	964	97
ADG/Ratio	2.19	81
%IMF/Ratio	4.82	113
REA/Ratio	13.7	107
Fat/Ratio	0.21	127
Dam's MPPA/Age	108	10

HB	GM	CED	BW	WW	YW	ADG	DMI	M	ME	HPG	CEM	ST	MARB	YG	CW	REA	FAT
190	45	17	-4.4	53	78	0.15	1.41	26	0	14	8	18	0.47	0.12	3	0.11	0.07
16%	85%	7%	12%	75%	83%	88%	51%	36%	49%	14%	30%	20%	34%	60%	95%	35%	99%

We selected Fast Break out of the 2018 5L bull sale based on his phenotype, foot and leg structure, performance and his dam who happens to be the dam of the popular 5L Bourne sire. We have used him on heifers the past three breeding seasons and have been pleased with the calving ease and type of his progeny. We are looking forward to getting his daughters into production.



REG. #3746615  
5L DEFENDER 560-30Z  
5L BLOCKADE 2218-30B  
5L OPAL 656-2218

O C C PROTOTYPE 847P  
5L OPAL 656-2218  
5L OPAL 0052-656

## 5L DOUBLE PLAY 2218-38E

IATTOO: 38E FLR BD: 1/29/17 100% 1A

5L ADVOCATE 817-14W	BW/Ratio	74	
5L BLACK ADINA 525-560	WW/Ratio	573	
O C C PROTOTYPE 847P	YW/Ratio	1124	
5L OPAL 0052-656	ADG/Ratio	3.44	
O C C KANGA 886K	%IMF/Ratio	4.32	97
O C C DIXIE ERICA 867K	REA/Ratio	13.1	103
5L FOREVER GRAND 5834	Fat/Ratio	0.21	89
SODAK OPAL K0052	Dam's MPPA/Age	105	9

HB	GM	CED	BW	WW	YW	ADG	DMI	M	ME	HPG	CEM	ST	MARB	YG	CW	REA	FAT
169	46	11	-1.1	56	86	0.19	1.53	15	0	15	1	18	0.21	-0.12	21	0.54	0
42%	69%	73%	60%	67%	69%	67%	61%	96%	50%	7%	98%	23%	84%	3%	53%	4%	12%

Double Play was a bull that we selected from 5L in the 2018 sale that we have used on our 2-year-old heifers and now older cows. His pedigree is unique being sired by the popular 5L Blockade out of his own dam, the great Opal cow. His first progeny have indexed 100 at both weaning and yearling which is right where we want him to be.



REG. #4085940  
RED U-2 RECON 192Y  
RED U-2 RECKONING 149A  
RED U-2 ANEXA 271Y

RED MINBURN COPENHAGEN 3Y  
RED U-2 MS DYNAMO 233B  
RED U-2 MS DYNAMO 234Z

## RED U2 MONEY TALKS 530F

IATTOO: 530F DUA BD: 2/17/18 100% 1A

RED U2 MISSION 61W	BW/Ratio	78	
RED U-2 LARKABA 8133U	WW/Ratio	734	
RED HOWE MAGNUM 169W	YW/Ratio	1328	
RED U-2 ANEXA 333N	ADG/Ratio	3.71	
RED RMJ REDMAN 1T	%IMF/Ratio		
MINBURN MAY 112M	REA/Ratio		
RED U2 MISSION 61W	Fat/Ratio		
RED FLYING K MS DYNAMO 73U	Dam's MPPA/Age		4

HB	GM	CED	BW	WW	YW	ADG	DMI	M	ME	HPG	CEM	ST	MARB	YG	CW	REA	FAT
199	44	13	-4	44	73	0.18	1.3	27	-16	9	8	21	0.26	0.12	17	0.02	0.04
9%	91%	42%	15%	93%	88%	74%	41%	30%	1%	76%	26%	4%	76%	60%	64%	52%	77%

After three trips to Canada studying the cowherd at U2, we came to the conclusion that we needed to sample a pedigree that worked multiple times in their program. We selected Money Talks out of their 2019 bull sale after studying the bull calves the previous fall as well as at the sale, and studying the cows in the spring and fall. We used 530F on both heifers and cows A.I. and then turned him with 50-plus head of first-calf heifers for natural service.



REG. #4143954  
5L DEFENDER 560-30Z  
5L THE REAL DEAL 1687-143B  
5L FIREFLY 275-1687

BUF CRK LANCER-F L297  
J5 L297 MERCEDES 14X  
JTB PAT MERCEDES 806

## MLK CRK THE REAL DEAL 9218

IATTOO: 9218 BTK BD: 2/11/19 100% 1A

5L ADVOCATE 817-14W	BW/Ratio	91	107
5L BLACK ADINA 525-560	WW/Ratio	730	108
5L DESTINATION 893-6215	YW/Ratio	1237	111
5L FIREFLY 2573-275	ADG/Ratio	3.16	114
BECKTON LANCER F442 T	%IMF/Ratio	3.45	129
BUF CRK LASS 4158	REA/Ratio	13.7	112
RED PATRICK 5278	Fat/Ratio	0.24	137
LVGW YA-MERCEDES 0152	Dam's MPPA/Age	105	9

HB	GM	CED	BW	WW	YW	ADG	DMI	M	ME	HPG	CEM	ST	MARB	YG	CW	REA	FAT
172	50	12	-1.5	67	113	0.29	2.01	26	2	10	7	16	0.59	0.05	29	0.19	0.01
37%	11%	57%	54%	20%	12%	8%	95%	36%	58%	59%	49%	50%	13%	23%	19%	19%	23%

9218 is a Real Deal son that we kept out of a cow we selected from the Bowles J5 herd in Chinook, MT. We feel that this combination will work well on our cowherd and are pleased with his performance in the breeding pasture. We put him in with 59 head of wet 2-year-olds and late-calving cows and he only had three opens in a 55-day breeding period.



REG. #4174570  
5L DEFENDER 560-30Z  
5L COW BOSS 5684-124D  
5L ROXIE 346-5684

5L MAGNUM 2124-86A  
5L MYDEE MISS 1807-3697  
5L MATTIE 913-1807

## 5L COW BOSS 3697-34G

IATTOO: 34G FLR BD: 2/5/19 100% 1A

5L ADVOCATE 817-14W	BW/Ratio	67	99
5L BLACK ADINA 525-560	WW/Ratio	626	100
5L RED EDGE 743-30V	YW/Ratio	989	95
5L ROXIE 1824-346	ADG/Ratio	2.25	87
5L ADVANTAGE 3267-221Y	%IMF/Ratio	5.74	98
5L LARKA 1060-2124	REA/Ratio	13	107
5L HERITAGE 1821-5985	Fat/Ratio	0.29	122
5L MATTIE X708-913	Dam's MPPA/Age	100	2

HB	GM	CED	BW	WW	YW	ADG	DMI	M	ME	HPG	CEM	ST	MARB	YG	CW	REA	FAT
175	47	14	-2	59	83	0.15	1.41	22	-7	12	5	17	0.62	-0.03	8	0.24	0.02
33%	53%	22%	45%	54%	74%	89%	53%	76%	9%	34%	88%	35%	10%	6%	91%	13%	38%

Cow Boss was selected out of the 2020 5L sale to use as a cleanup sire on our heifers. We put him with 88 head of heifers that were time A.I.'d in two different groups and he only had 12 opens in a short breeding period and came out of the heifers in very good flesh.





# Bred Cows



1

## MLK CRK LAKOTA 968

REG. #1337762 IATTOO: 968 BTK BD: 3/18/09 100% 1A

BUF CRK BARNEY 3474  
MLK CRK FOUNDATION 110  
MLK CRK LAKOTA 850

FCC RAMBO 502  
MLK CRK LAKOTA 112-RAMB  
CFLD LAKOTA 112-914

BUF CRK BARON 2678  
OLE SUNFLOWER 359 PB08

GLACIER CUB 446  
MLK CRK LAKOTA 651

CV FOUR TIMES  
COPPER LASS 2392

RCN DYNAMO 614  
CAWFIELD LAKOTA 914

BW/Ratio	68	0
WW/Ratio	511	0
PROGENY AVERAGES		
# of Hd	Ratio	
BW	10	107
WW	10	106
MPPA	105	

HB	GM	CED	BW	WW	YW	ADG	DMI	M	ME	HPG	CEM	ST	MARB	YG	CW	REA	FAT
152	42	12	-2.3	38	55	0.11	1.02	35	6	8	7	18	0.39	0.23	-2	-0.53	0.04
74%	99%	47%	34%	97%	97%	97%	23%	2%	82%	86%	54%	36%	36%	97%	98%	99%	87%

Bred to 5L Foreman 2174-370E for a Heifer calf, due 2/21/21.

We began our venture in the Red Angus business by purchasing a few cows, two which originated from the Dave Cawfield herd that were of the Lakota lineage. 968 carries on the tradition of what that cowline is known for: longevity, very functional feet, legs and udder and above-average production. At 11 years of age she brought in the second highest indexing heifer calf and bred back on time carrying a heifer calf. We are reserving the right for one flush on this cow in the future at the buyer's convenience and our expense.



Lot 1



Lot 1



2

## MLK CRK SHEBA 945

REG. #1309347 IATTOO: 945 BTK BD: 3/2/09 100% 1A

RED CROWFOOT OLE'S OSCAR  
RIDGE OSCAR 625  
RIDGE CASEY 004-4106

BECKTON EPIC R397 K  
MLK CRK SHEBA 748  
MLK CRK SHEBA 548

MLK CRK CUB 722  
RED CROWFOOT OMEGA 9179J  
TR JULIAN MT212  
RIDGE CASEY 863-004

BECKTON EPIC K F075  
BECKTON KIT F468 JL  
MLK CRK CHATEAU 3101  
MLK CRK SHEBA 355

BW/Ratio	64	85
WW/Ratio	600	95
PROGENY AVERAGES		
# of Hd	Ratio	
BW	10	89
WW	10	101
MPPA	101	

HB	GM	CED	BW	WW	YW	ADG	DMI	M	ME	HPG	CEM	ST	MARB	YG	CW	REA	FAT
262	46	21	-7.1	46	70	0.15	0.96	32	3	11	14	25	0.41	0.06	20	0.11	0.02
1%	66%	1%	1%	88%	87%	83%	19%	6%	59%	39%	1%	1%	32%	28%	41%	22%	50%

Bred to MLK CRK The Real Deal 9218 for a Bull calf, due 3/1/21.

This deep-ribbed, good-footed, beautiful-uddered Oscar daughter is the type and kind of cattle that we strive to raise. Not only has she been raising calves that are above average she has also worked into the top 1% for the HerdBuilder index.



# Bred Cows



Lot 3



3

REG. #1309324

## MLK CRK LAKOTA 953

TATTOO: 953 BTK BD: 3/12/09 100% 1A

BECKTON EPIC K F075  
**BECKTON EPIC R397 K**  
BECKTON KIT F468 JL

RED YY RED KNIGHT 640F  
**MLK CRK LAKOTA 624**  
MLK CRK LAKOTA 189

BECKTON EPIC D404  
BECKTON BELGA D483 KR  
BECKTON JULIAN GG B571  
BECKTON KIT A517 NP  
RED YY 23L TOPPER 408D  
RED TOP GOLDIE 40U  
MLK CRK CORNERSTONE JC  
MLK CRK LAKOTA 152-HOBO

BW/Ratio	83	104
WW/Ratio	603	96
PROGENY AVERAGES		
# of Hd Ratio		
BW	10	99
WW	10	101
MPPA	101	

HB	GM	CED	BW	WW	YW	ADG	DMI	M	ME	HPG	CEM	ST	MARB	YG	CW	REA	FAT
217	48	7	1.3	69	104	0.22	1.18	26	3	17	4	23	0.25	0.06	24	0.21	0.03
2%	24%	95%	91%	11%	18%	35%	36%	40%	64%	2%	93%	2%	74%	25%	29%	10%	61%

Bred to RED U2 Money Talks 530F for a Heifer calf, due 3/27/21.

Beckton Epic R397K became the No. 1 bull in the Red Angus breed for registrations in 2014. We purchased him as a yearling for use on heifers. At that time, he was breed average across his EPD profile. Through his progeny, like 953, he became a sire that ranked high on many EPD traits. 953 produced an Andras Fusion bull calf that caught the attention of some breeders and ended up topping our 2015 sale for \$40,000 to Bieber Red Angus. At age 11, she continues to bring in progeny that are sound in their functionality like their dam. She sells bred to RED U2 Money Talks 530F, a bull that we purchased from the Unger family in Canada.



Lot 4



4

REG. #1309338

## MLK CRK LANA 987

TATTOO: 987 BTK BD: 4/5/09 100% 1A

BECKTON EPIC K F075  
**BECKTON EPIC R397 K**  
BECKTON KIT F468 JL

SHOCO DATA  
**MLK CRK LANA 670**  
MLK CRK LANA 558

BECKTON EPIC D404  
BECKTON BELGA D483 KR  
BECKTON JULIAN GG B571  
BECKTON KIT A517 NP  
SHOCO SIR ROBIN  
VDAR BLACKANA 303  
PCH RAMBO 701  
MLK CRK LANA 704-HOBO

BW/Ratio	86	107
WW/Ratio	633	100
PROGENY AVERAGES		
# of Hd Ratio		
BW	10	106
WW	10	101
MPPA	101	

HB	GM	CED	BW	WW	YW	ADG	DMI	M	ME	HPG	CEM	ST	MARB	YG	CW	REA	FAT
169	47	5	1.1	69	102	0.21	1.09	19	2	13	5	18	0.22	0.22	21	-0.15	0.05
50%	48%	99%	90%	11%	22%	43%	28%	84%	53%	21%	84%	33%	81%	96%	38%	80%	93%

Bred to HRR Advantage 6120 for a Bull calf, due 3/17/21.



Lot 5



5

REG. #1309318

## MLK CRK LAKINA 970

TATTOO: 970 BTK BD: 3/19/09 100% 1A

BECKTON EPIC K F075  
**BECKTON EPIC R397 K**  
BECKTON KIT F468 JL

SHOCO DATA  
**MLK CRK LAKINA 523**  
MLK CRK LAKINA 228

BECKTON EPIC D404  
BECKTON BELGA D483 KR  
BECKTON JULIAN GG B571  
BECKTON KIT A517 NP  
SHOCO SIR ROBIN  
VDAR BLACKANA 303  
MLK CRK MARIAS 013  
MLK CRK LAKINA 071

BW/Ratio	92	111
WW/Ratio	694	110
PROGENY AVERAGES		
# of Hd Ratio		
BW	10	104
WW	10	102
MPPA	102	

HB	GM	CED	BW	WW	YW	ADG	DMI	M	ME	HPG	CEM	ST	MARB	YG	CW	REA	FAT
185	47	5	0.5	64	98	0.21	1.25	25	3	13	6	20	0.39	0.19	29	0.12	0.06
26%	34%	99%	83%	22%	29%	39%	43%	45%	67%	16%	68%	17%	36%	92%	15%	20%	98%

Open Ready to Flush.

In our 2014 female sale, we sold the dam to Lot 5 to Sandbur Ridge Red Angus in NE as the second-high-selling female. 970 is carrying on the tradition on her dam bringing in above-average progeny while maintaining soundness to her function. We had an issue with our breeding management this summer which left 970 open for the new owner to flush.





# Bred Cows



Lot 6



6

## MLK CRK FIREFLY 974

REG. # 1309336

TATTOO: 974 BTK BD: 3/24/09 100% 1A

BKT JULIAN 7526 G  
**BUF CRK GIULIANI L851**  
 BUF CRK MARIGOLD 1230

BECKTON JULIAN 6592  
 BKT BELGA 6746 GS  
 BUF CRK CHIEF092-824  
 BUF CRK MARIGOLD 837

BUF CRK CHF 824-1658  
**MLK CRK LANA 760**  
 MLK CRK LANA 704-HOBO

BUF CRK CHIEF092-824  
 BFLO CRK CARIE VC473  
 BUF CRK HOBO 1961  
 PCH LANA 107

BW/Ratio	84	101
WW/Ratio	581	92
PROGENY AVERAGES		
# of Hd	Ratio	
BW	10	108
WW	10	103
MPPA	103	

HB	GM	CED	BW	WW	YW	ADG	DMI	M	ME	HPG	CEM	ST	MARB	YG	CW	REA	FAT
166	45	8	-1.2	45	70	0.15	0.89	24	-5	17	-3	19	0.34	0.11	4	-0.31	0.01
54%	75%	89%	54%	89%	87%	81%	15%	57%	15%	2%	99%	22%	49%	56%	92%	97%	25%

Bred to 5L Foreman 2174-370E for a Bull calf, due 2/21/21.



7

## MLK CRK THELMA 952

REG. # 1309320

TATTOO: 952 BTK BD: 3/11/09 100% 1A

BKT JULIAN 7526 G  
**BUF CRK GIULIANI L851**  
 BUF CRK MARIGOLD 1230

BECKTON JULIAN 6592  
 BKT BELGA 6746 GS  
 BUF CRK CHIEF092-824  
 BUF CRK MARIGOLD 837

MLK CRK CHATEAU 3101  
**MLK CRK THELMA 331**  
 MLK CRK THELMA 331

GLACIER CHATEAU 744  
 MLK CRK LAKOTA 850  
 GLACIER CHATEAU 744  
 MLK CRK THELMA 179-HOBO

BW/Ratio	90	110
WW/Ratio	657	104
PROGENY AVERAGES		
# of Hd	Ratio	
BW	10	103
WW	10	97
MPPA	98	

HB	GM	CED	BW	WW	YW	ADG	DMI	M	ME	HPG	CEM	ST	MARB	YG	CW	REA	FAT
160	45	10	-1.6	48	81	0.21	0.87	22	3	13	2	18	0.14	0.25	14	-0.42	0.04
64%	76%	77%	47%	82%	69%	44%	14%	69%	66%	24%	98%	38%	94%	99%	68%	99%	83%

Bred to 5L Double Play 2218-38E for a Bull calf, due 3/17/21.



Lot 8



8

## MLK CRK ESTONIA 933

REG. # 1309294

TATTOO: 933 BTK BD: 2/20/09 100% 1A

RED YY 23L TOPPER 408D  
**RED YY RED KNIGHT 640F**  
 RED TOP GOLDIE 40U

BJR TOPPER AGAIN 23L  
 RED DEVOLANE ROZINE 8B

MLK CRK LIGHT 912  
**SEEGER ESTONIA 355**  
 BJR ESTONIA 968-775

RED LINE FLAME 11N  
 REDLINE GOLDIE 40K  
 LARSON RED LIGHTNING  
 MLK CRK LANA 704-HOBO  
 BJR HAWK-EYE 104  
 BJR ESTONIA2258-3148

BW/Ratio	92	110
WW/Ratio	636	101
PROGENY AVERAGES		
# of Hd	Ratio	
BW	10	101
WW	10	101
MPPA	101	

HB	GM	CED	BW	WW	YW	ADG	DMI	M	ME	HPG	CEM	ST	MARB	YG	CW	REA	FAT
202	47	10	0.6	59	91	0.20	1.31	24	-2	13	8	20	0.30	0.00	15	-0.05	-0.02
9%	40%	79%	85%	42%	46%	51%	48%	55%	24%	18%	20%	12%	60%	6%	63%	57%	1%

Bred to HRR Advantage 6120 for a Bull calf, due 3/13/21.



# Bred Cows



9

## MLK CRK SHEBA 900

REG. #1309302  
5L NORSEMAN EXPRESS  
5L GRAND EXPRESS 453-5655  
5L RUBY 01-453

GLACIER CHATEAU 744  
MLK CRK SHEBA 403  
MLK CRK SHEBA 055

IATTOO: 900 BTK BD: 2/5/09 100% 1A

5L NORSEMAN KING 2291  
5L MARTHA 197-159  
5L NORSEMAN KING 2291  
5L RUBY 199-01  
LMAN KING ROB 8621  
GLACIER REBALA  
BUF CRK BARNEY 3474  
MLK CRK SHEBA 556

BW/Ratio	72	87
WW/Ratio	632	100
PROGENY AVERAGES		
# of Hd Ratio		
BW	8	91
WW	8	97
MPPA	98	

HB	GM	CED	BW	WW	YW	ADG	DMI	M	ME	HPG	CEM	ST	MARB	YG	CW	REA	FAT
188	45	16	-3.3	48	72	0.15	1.17	27	-3	16	12	17	0.36	-0.01	30	0.45	0.02
22%	73%	10%	19%	82%	85%	85%	35%	30%	23%	4%	1%	52%	44%	5%	12%	1%	40%

Bred to MLK CRK The Real Deal 9218 for a Heifer calf, due 3/13/21.

This moderate-framed, dark-red Grand Express daughter is the maternal sister to the Select Sires MLK CRK Epic 8171 sire. In 2015, she produced the Andras Fusion calving-ease sire, MLK CRK Fusion 5202, that sold to Leland Red Angus that continues to produce functional bulls and females for their program. You will find bred heifers bred to him later in the catalog. 900 became lame in the past five weeks and it appears that it is in her stifle. We would not normally offer a lame cow in our sale but we are dispersing this age group of cows. We will offer this cow with a floor and if she doesn't sell we will calve her and flush her.



10

## MLK CRK EMUMAR 024

REG. #1372061  
5L TRADITION 203-6145  
5L TRADEMARK 1715-6317  
5L LAKOTA 41C-1715

LCC VAQUERO 1412J  
MLK CRK EMUMAR 641  
MLK CRK EMUMAR 854

O C C LEGEND 616L  
5L HAZEL 1821-203  
5L TRAVELING GRAND 5113  
BASIN LAKOTA C999  
LEACHMAN COWBOSS 1129G  
PARK MISS WIDELOAD F648  
GLACIER LOGAN 210  
MLK CRK EMUMAR695

BW/Ratio	81	100
WW/Ratio	633	100
PROGENY AVERAGES		
# of Hd Ratio		
BW	9	103
WW	9	104
MPPA	107	

HB	GM	CED	BW	WW	YW	ADG	DMI	M	ME	HPG	CEM	ST	MARB	YG	CW	REA	FAT
194	47	13	-0.4	49	89	0.25	2.22	27	10	12	7	20	0.51	0.09	17	-0.10	0.01
15%	50%	30%	70%	81%	50%	14%	99%	27%	97%	29%	56%	12%	16%	47%	56%	69%	27%

Open Ready to Flush.

Lot 10 is the highest MPPA cow in the sale. She is a 5L Trademark daughter which was a full brother to 5L Tradesman. 024 has brought in the highest indexing calves throughout her career here at the ranch. Her 2019-born son sold to Kevin Nelson of Opheim, MT. She sells open ready to flush. We will retain the right for one flush in the future at the buyer's convenience and our expense.



Lot 10



Lot 10





# Bred Cows

Our Embryo Program goal is to produce more females out of cows that have proven themselves time and again. The donor cows need to be phenotypically correct with balanced udders, good leg and feet structure, good fleshing ability and need to have proven that they work in our environment – this is the majority of their story.

For us the MPPA of these cows tells us another part of their story along with their EPD profile. We do not like to pull cows out of production so we will keep breeding them and when opportunity arises, we will then flush them.

When you look at the embryo lots you will find that the 064 cow is the mother to the 288 donor dam.

The Lot 37A dam is a daughter of MLK CRK LANA 2281 who also was a donor cow. Then go back to two more generations and you will find that 470's great granddam also was a donor cow in our herd. We tend to replicate the cows that work.



Lot 11



11

## MLK CRK LAKOTA 064

REG. #1372025

IATTOO: 064 BTK BD: 3/5/10 100% 1A

5L SIGNATURE 5615  
5L BLAZIN TRAIL 1336-237V  
5L SHEILA 343-1336

5L NORSEMAN KING 2291  
5L RUBY 199-01  
5L BLAZIN HOB0 404-5654  
5L SHEILA 1341-343  
SHOCO SIR ROBIN  
VDAR BLACKANA 303  
LARSON RED LIGHTNING  
MLK CRK LAKOTA 604-HOB0

SHOCO DATA  
MLK CRK LAKOTA 515  
MLK CRK LAKOTA 858

BW/Ratio	78	94
WW/Ratio	633	100
PROGENY AVERAGES		
# of Hd	Ratio	
BW	8	95
WW	8	103
MPPA	103	

HB	GM	CED	BW	WW	YW	ADG	DMI	M	ME	HPG	CEM	ST	MARB	YG	CW	REA	FAT
186	46	13	-1.9	60	91	0.19	1.64	27	3	15	7	18	0.39	0.13	16	-0.09	0.03
25%	66%	31%	41%	41%	47%	54%	80%	28%	60%	6%	50%	31%	36%	69%	60%	67%	70%

Bred to Ridge Provision 6013 for a calf, due 4/10/21.

Lot 11's dam was my favorite Shoco Data daughter. We used Data for five years and he left us with daughters that produced above-average progeny and performed in our environment trouble free. Lot 11 carries on the characteristics of her dam, having great feet and udder along with producing progeny that push down the scales. We flushed this cow last year and she averaged 14.5 frozen eggs per flush. We are offering two packages of embryos as Lots 11A and 11B.



11B

## 3 EMBRYOS

100% 1A

RED U-2 RECKONING 149A  
RED U2 MONEY TALKS 530F  
RED U-2 MS DYNAMO 233B

RED U-2 RECON 192Y  
RED U-2 ANEXA 271Y  
RED MINBURN COPENHAGEN 3Y  
RED U-2 MS DYNAMO 234Z  
5L SIGNATURE 5615  
5L SHEILA 343-1336  
SHOCO DATA  
MLK CRK LAKOTA 858

5L BLAZIN TRAIL 1336-237V  
MLK CRK LAKOTA 064  
MLK CRK LAKOTA 515

HB	GM	CED	BW	WW	YW	ADG	DMI	M	ME	HPG	CEM	ST	MARB	YG	CW	REA	FAT
192	45	13	-3.0	52	82	0.19	1.47	27	-7	12	8	19	0.32	0.13	16	-0.04	0.03
PROJECTED EPDs																	

These embryos are out of the RED U2 Money Talks 530F bull that we purchased in Unger's 2019 sale. Guaranteed one (1) pregnancy if put in by a certified embryo technician. The embryos are in storage at Sleeping Giant Genetics. Shipping is FOB.

Catalog and video online at [www.milkcreekreds.com](http://www.milkcreekreds.com)



11A

## 4 EMBRYOS

100% 1A

5L DEFENDER 560-30Z  
5L THE REAL DEAL 1687-143B  
5L FIREFLY 275-1687

5L ADVOCATE 817-14  
5L BLACK ADINA 525-560  
5L DESTINATION 893-6215  
5L FIREFLY 2573-275  
5L SIGNATURE 5615  
5L SHEILA 343-1336  
SHOCO DATA  
MLK CRK LAKOTA 858

5L BLAZIN TRAIL 1336-237V  
MLK CRK LAKOTA 064  
MLK CRK LAKOTA 515

HB	GM	CED	BW	WW	YW	ADG	DMI	M	ME	HPG	CEM	ST	MARB	YG	CW	REA	FAT
168	48	13	-1.3	64	107	0.26	2.29	24	4	14	7	15	0.54	0.09	28	0.09	0.01
PROJECTED EPDs																	

Guaranteed one (1) pregnancy if put in by a certified embryo technician. The embryos are in storage at Sleeping Giant Genetics. Shipping is FOB.



11C

## 4 EMBRYOS

100% 1A

5L ADVANTAGE 3267-221Y  
RIDGE PROVISION 6013  
RIDGE MONA 8162-2057

BUF CRK THE RIGHT KIND U199  
5L ADINA 195-3267  
5L ZENITH 1425-5767  
RIDGE MONA 620-8162  
TR JULIAN LT142  
MLK CRK LENA 763  
5L BLAZIN TRAIL 1336-237V  
MLK CRK LAKOTA 515

MLK CRK REDSTONE  
MLK CRK LAKOTA 288  
MLK CRK LAKOTA 064

HB	GM	CED	BW	WW	YW	ADG	DMI	M	ME	HPG	CEM	ST	MARB	YG	CW	REA	FAT
195	47	13	-2.5	56	86	0.19	1.13	27	-3	15	6	19	0.36	0.08	9	-0.11	0.02
PROJECTED EPDs																	

Lot 11 C is a daughter of lot 11 out of the MLK CRK Redstone sire that has daughters that continue to bring in some of our top calves both bulls and heifers. She produced our high-selling bull in our 2017 sale selling to Dob Kirkpatrick of SD. She is moderate framed with a beautiful udder and great feet. She also is in the TOP 7% for HB, Top 13% for STAY. Guaranteed one (1) pregnancy if put in by a certified embryo technician. The embryos are in storage at Sleeping Giant Genetics. Shipping is FOB.

Milk Creek Reds Female Sale – 13



# Bred Cows



Lot 12



12

## MLK CRK LAKOTA 083

REG. #1388165

TATTOO: 083

BTK

BD: 3/17/10

100% 1A

5L BLAZIN HOB0 404-5654  
5L BLAZIN RED 1354-6166  
5L REBA 60-1354

0 C C EMBLAZON 854E  
5L SEOLA 282-404

5L AMBUSH 587-5292  
5L REBA 298-60

GLACIER GRIZ 146  
GLACIER FRITZ 241

GLACIER LOGAN 210  
MLK CRK LAKOTA Y46-HOB0

GLACIER CUB 446  
MLK CRK LAKOTA 850  
MLK CRK LAKOTA 651

BW/Ratio	78	ET
WW/Ratio	597	ET
PROGENY AVERAGES		
# of Hd Ratio		
BW	9	103
WW	9	105
MPPA	104	

HB	GM	CED	BW	WW	YW	ADG	DMI	M	ME	HPG	CEM	ST	MARB	YG	CW	REA	FAT
194	44	12	-2.3	50	74	0.15	1.12	32	4	16	7	20	0.44	0.30	14	-0.46	0.05
15%	89%	47%	34%	78%	82%	83%	30%	6%	70%	4%	47%	12%	26%	99%	67%	99%	97%

Bred to 5L Foreman 2174-370E for a Heifer calf, due 2/21/21.



13

## MLK CRK LAKOTA 169

REG. #1431442

TATTOO: 0169

BTK

BD: 3/3/11

100% 1A

5L TRAVLIN EXPRESS 1892-6295  
5L TRAILBLAZER 1766-188V  
5L SERENA 3234-1766

5L NORSEMAN EXPRESS  
5L SUNSHINE 699-1892

5L EXPLORER 589-7414  
5L SERENA X199-3234

RED YY RED KNIGHT 640F  
MLK CRK LAKOTA 926  
MLK CRK LAKOTA 173

RED YY 23L TOPPER 408D  
RED TOP GOLDIE 40U

MLK CRK CORNERSTONE JC  
MLK CRK LAKOTA 858

BW/Ratio	78	104
WW/Ratio	617	100
PROGENY AVERAGES		
# of Hd Ratio		
BW	8	109
WW	8	106
MPPA	105	

HB	GM	CED	BW	WW	YW	ADG	DMI	M	ME	HPG	CEM	ST	MARB	YG	CW	REA	FAT
208	46	12	0.2	60	95	0.22	1.49	24	0	16	8	20	0.15	0.05	21	0.15	0.02
5%	57%	52%	79%	39%	35%	32%	67%	52%	38%	3%	32%	11%	93%	24%	38%	16%	48%

Bred to RED Minburn Copenhagen 3Y for a Heifer calf, due 2/21/21.

This attractive-made 5L Trailblazer daughter continues to bring in good calves year after year. She raised the high-selling bull in our 2017 bull sale with her son selling to Northern Lites Red Angus of Opheim, MT. Her MLK CRK Advocate 4304 daughter this fall weaned off with an 112 ratio. She ranks in the top 5% of the HerdBuilder index.



Lot 13



Lot 13





# Bred Cows



14

## MLK CRK SHEBA 1014

REG. # 1431460

TATTOO: 1014 BTK BD: 4/3/11 100% 1A

TR JULIAN LT142  
MLK CRK REDSTONE  
MLK CRK LENA 763

BECKTON JULIAN GG B571  
LR LANA G760

BECKTON EPIC R397 K  
MLK CRK LENA 533

BECKTON EPIC R397 K  
MLK CRK SHEBA 966X  
MLK CRK SHEBA 333

BECKTON EPIC K F075  
BECKTON KIT F468 JL

GLACIER CHATEAU 744  
MLK CRK SHEBA 655

BW/Ratio	80	106
WW/Ratio	624	101
PROGENY AVERAGES		
# of Hd	Ratio	
BW	8	95
WW	8	104
MPPA	104	

HB	GM	CED	BW	WW	YW	ADG	DMI	M	ME	HPG	CEM	ST	MARB	YG	CW	REA	FAT
188	48	10	-1.2	70	104	0.21	1.44	24	2	17	6	18	0.50	0.18	16	-0.04	0.05
21%	26%	79%	54%	9%	19%	41%	62%	51%	58%	2%	74%	33%	17%	90%	59%	54%	97%

Bred to RED U2 Money Talks 530F for a calf, due 4/4/21.

Lot 14 is a dark-red, deep-ribbed, MLK CRK Redstone 9102 daughter that produced the MLK CRK Advocate 4304 bull that has done very well for us producing some of the bred heifers and heifer calves in this offering. She also produced our second-high-selling bull in our 2016 bull sale that sold to Westphal Red Angus.



15

## MLK CRK EMUMAR 150

REG. # 1431406

TATTOO: 150 BTK BD: 2/21/11 100% 1A

BUF CRK LANCER R017  
MUSHRUSH IMPRESSIVE CA U236  
MUSHRUSH MADAM LT R265

BECKTON LANCER F442 T  
BUF CRK JULIET N036

TR JULIAN LT142  
MUSHRUSH ROBIN M125

LCC VAQUERO 1412J  
MLK CRK EMUMAR 641  
MLK CRK EMUMAR 854

LEACHMAN COWBOSS 1129G  
PARK MISS WIDELOAD F648

GLACIER LOGAN 210  
MLK CRK EMUMAR695

BW/Ratio	79	98
WW/Ratio	600	97
PROGENY AVERAGES		
# of Hd	Ratio	
BW	9	94
WW	9	100
MPPA	100	

HB	GM	CED	BW	WW	YW	ADG	DMI	M	ME	HPG	CEM	ST	MARB	YG	CW	REA	FAT
204	47	18	-3.8	52	83	0.20	1.02	24	3	12	9	19	0.36	0.04	16	0.07	0.01
7%	35%	3%	13%	73%	65%	52%	23%	56%	62%	29%	13%	23%	44%	18%	59%	29%	32%

Open Ready to Flush.

This attractive-made, larger framed Mushrush Impressive daughter produced one of the higher indexing heifer calves in our 2020 calf crop. She also produced a \$10,000 son that Ravenscroft Red Angus from NE purchased in our 2015 sale.



16

## MLK CRK LAKOTA 103

REG. # 1431375

TATTOO: 103 BTK BD: 2/8/11 100% 1A

5L GRAND EXPRESS 453-5655  
MLK CRK EXPRESS 9127  
MLK CRK SHEBA 043

5L NORSEMAN EXPRESS  
5L RUBY 01-453

BJR PROOF 224-159  
MLK CRK SHEBA 869

MLK CRK CORNERSTONE JC  
MLK CRK LAKOTA 173  
MLK CRK LAKOTA 858

BJR JR 107-136  
BJR SUN GAL 4X-561

LARSON RED LIGHTNING  
MLK CRK LAKOTA 604-HOBO

BW/Ratio	81	100
WW/Ratio	575	93
PROGENY AVERAGES		
# of Hd	Ratio	
BW	8	103
WW	8	102
MPPA	102	

HB	GM	CED	BW	WW	YW	ADG	DMI	M	ME	HPG	CEM	ST	MARB	YG	CW	REA	FAT
205	43	12	-1.9	53	78	0.16	1.03	22	-4	13	5	23	-0.01	0.22	19	-0.30	0.03
7%	98%	52%	41%	68%	75%	80%	24%	67%	19%	21%	85%	2%	99%	97%	48%	96%	78%

Bred to 5L The Real Deal 1687-143B for a Bull calf, due 2/21/21.

MLK CRK Express 9127 is a sire we continue to use in our program because of all of the positive attributes that he adds to making a productive, functional and profitable female. Eleven years from

his birthdate we still are using him in our AI lineup. Lot 16 displays the features we like in our females. Attempting to put all the right traits in one package is very challenging but this cow has many of them already in place.



# Bred Cows



Lot 17

them might get hurt. During the 2019 breeding season, 173 suffered a stifle injury that has left her with a lameness in her right hind leg. She is still able to travel 3 miles without falling behind and raise above-average calves even with an injury. Prior to the injury she raised our top- selling bull calf in our 2016 sale selling to Ole Farms for \$23,000. Once again due to the injury this cow will have a floor and if she doesn't sell we will calve her and flush her.



173

## MLK CRK LAKOTA 173

REG. #1431422

TATTOO: 173

BTK

BD: 3/6/11

100% 1A

BECKTON EPIC K F075  
**BECKTON EPIC R397 K**  
BECKTON KIT F468 JL

BECKTON EPIC D404  
BECKTON BELGA D483 KR  
BECKTON JULIAN GG B571  
BECKTON KIT A517 NP

RED YY RED KNIGHT 640F  
**MLK CRK LAKOTA 825**  
MLK CRK LAKOTA 611

RED YY 23L TOPPER 408D  
RED TOP GOLDIE 40U  
MLK CRK TITLEIST 4158  
MLK CRK LAKOTA 239

BW/Ratio	83	106
WW/Ratio	658	107
PROGENY AVERAGES		
# of Hd	Ratio	
BW	8	98
WW	8	100
MPPA	101	

HB	GM	CED	BW	WW	YW	ADG	DMI	M	ME	HPG	CEM	ST	MARB	YG	CW	REA	FAT
213	47	8	-1.4	60	99	0.24	1.34	25	2	15	6	22	0.28	0.17	22	-0.01	0.05
4%	37%	94%	50%	38%	28%	20%	52%	48%	53%	7%	64%	3%	65%	87%	36%	47%	93%

Bred to 5L The Real Deal 1687-143B for a Heifer calf, due 2/21/21.

Synchronizing large groups of cattle has its advantages but sometimes there are drawbacks. One of them is displayed in Lot 17. When you have a large group of bulling cows, sometimes one of them is displayed in Lot 17. When you have a large group of bulling cows, sometimes one of them is displayed in Lot 17. When you have a large group of bulling cows, sometimes one of them is displayed in Lot 17.



Lot 18



152

## MLK CRK EMUMAR 152

REG. #1431453

TATTOO: 152

BTK

BD: 2/20/11

100% 1A

5L GRAND EXPRESS 453-5655  
**MLK CRK EXPRESS 9127**  
MLK CRK SHEBA 043

5L NORSEMAN EXPRESS  
5L RUBY 01-453  
BJR PROOF 224-159  
MLK CRK SHEBA 869

BECKTON EPIC R397 K  
**MLK CRK EMUMAR 959**  
MLK CRK EMUMAR 854

BECKTON EPIC K F075  
BECKTON KIT F468 JL  
GLACIER LOGAN 210  
MLK CRK EMUMAR695

BW/Ratio	69	94
WW/Ratio	586	95
PROGENY AVERAGES		
# of Hd	Ratio	
BW	8	100
WW	8	102
MPPA	102	

HB	GM	CED	BW	WW	YW	ADG	DMI	M	ME	HPG	CEM	ST	MARB	YG	CW	REA	FAT
198	45	16	-2.8	53	76	0.15	1.20	22	-3	17	9	18	0.42	0.09	19	-0.08	0.01
11%	74%	8%	25%	69%	78%	85%	38%	70%	22%	2%	15%	29%	30%	46%	47%	64%	23%

Bred to 5L The Real Deal 1687-143B for a Bull calf, due 2/21/21.



19

## MLK CRK LAKOTA 19

REG. #1431456

TATTOO: 149

BTK

BD: 2/19/11

100% 1A

BUF CRK LANCER R017  
**MUSHRUSH IMPRESSIVE CA U236**  
MUSHRUSH MADAM LT R265

BECKTON LANCER F442 T  
BUF CRK JULIET N036  
TR JULIAN LT142  
MUSHRUSH ROBIN M125

BUF CRK GIULIANI L851  
**MLK CRK LAKOTA 963**  
MLK CRK LAKOTA 618

BKT JULIAN 7526 G  
BUF CRK MARIGOLD1230  
BUF CRK HOB0 1961  
MLK CRK LAKOTA 452

BW/Ratio	76	103
WW/Ratio	592	96
PROGENY AVERAGES		
# of Hd	Ratio	
BW	8	99
WW	8	99
MPPA	100	

HB	GM	CED	BW	WW	YW	ADG	DMI	M	ME	HPG	CEM	ST	MARB	YG	CW	REA	FAT
178	45	12	-1.4	54	81	0.17	0.97	24	-1	13	5	18	0.19	0.09	14	-0.02	0.02
35%	73%	42%	50%	64%	69%	73%	20%	57%	35%	19%	79%	32%	87%	43%	67%	50%	58%

Bred to 5L Double Play 2218-38E for a calf, due 4/10/21.

Lot 19 is a moderate-framed, deep-bodied Impressive daughter that displays functional feet and udder like we strive to produce.





# Bred Cows



Lot 20



20

## MLK CRK SHEBA 107

REG. #1431436

TATTOO: 107 BTK BD: 2/10/11 100% 1A

BECKTON JULIAN GG B571  
TR JULIAN LT142  
TR LANA G760

[BKT JULIAN 7526 G  
[BKT MARTA 9A13 JL  
[BECKTON CODY V E023  
[BECKTON LANA E828 SC  
[5L NORSEMAN EXPRESS  
[5L RUBY 01-453  
[GLACIER CHATEAU 744  
[MLK CRK SHEBA 055

5L GRAND EXPRESS 453-5655  
MLK CRK SHEBA 900  
MLK CRK SHEBA 403

BW/Ratio	68	92
WW/Ratio	624	101
PROGENY AVERAGES		
# of Hd	Ratio	
BW	8	95
WW	8	100
MPPA	100	

HB	GM	CED	BW	WW	YW	ADG	DMI	M	ME	HPG	CEM	ST	MARB	YG	CW	REA	FAT
215	47	18	-5.6	52	79	0.17	0.82	29	-1	15	12	19	0.39	0.02	17	0.29	0.03
3%	37%	3%	3%	72%	74%	74%	12%	19%	32%	5%	1%	23%	36%	12%	53%	5%	76%

Bred to 5L The Real Deal 1687-143B for a Heifer calf, due 2/21/21.

Here is a cow that has below average ratio for BW, average ratio for WW, 100 MPPA and look at her EPD's 10 of them in the top 23%. A good cow maker that is in the top 5% for REA an a fair Marbling EPD. Granddaughter sells as Lot 67.



Lot 21



21

## MLK CRK SUN GAL 1001

REG. #1453327

TATTOO: 1001 BTK BD: 3/23/11 100% 1A

BECKTON EPIC K F075  
BECKTON EPIC R397 K  
BECKTON KIT F468 JL

[BECKTON EPIC D404  
[BECKTON BELGA D483 KR  
[BECKTON JULIAN GG B571  
[BECKTON KIT A517 NP  
[RED SSS MONU4X 237C  
[RCRA SAMANTHA  
[BJR MAKE MY DAY 981  
[BJR SUN GAL 729-3112

BJR MONU 4X-303  
BJR SUN GAL 4X-561  
BJR SUN GAL 1193-375

BW/Ratio	72	ET
WW/Ratio	709	ET
PROGENY AVERAGES		
# of Hd	Ratio	
BW	8	104
WW	8	101
MPPA	101	

HB	GM	CED	BW	WW	YW	ADG	DMI	M	ME	HPG	CEM	ST	MARB	YG	CW	REA	FAT
182	49	6	-1.1	56	98	0.26	1.48	23	5	9	1	21	0.42	0.08	11	0.01	0.03
29%	14%	97%	56%	55%	29%	10%	66%	65%	78%	81%	99%	9%	30%	35%	76%	42%	66%

Bred to 5L Foreman 2174-370E for a Bull calf, due 2/23/21.

Epic left us with many functional, easy-fleshing females like lot 21. Her Foreman bull calf that she is carrying should push down the scales next fall and leave the new owner with a pedigree that will work to cover all components of the beef industry.



Lot 22



22

## MLK CRK RED TOP 1010

REG. #1431423

TATTOO: 1010 BTK BD: 3/30/11 100% 1A

TR JULIAN LT151  
TR JULIAN WT951  
TR LANA G760

[BECKTON JULIAN GG B571  
[MS GEOMETRIC 917  
[BECKTON CODY V E023  
[BECKTON LANA E828 SC  
[SHOCO SIR ROBIN  
[VDAR BLACKANA 303  
[MLK CRK CUB 722  
[MS HAMMEL RED TOP 6309

SHOCO DATA  
MLK CRK RED TOP 828  
MLK CRK RED TOP 232

BW/Ratio	80	101
WW/Ratio	633	103
PROGENY AVERAGES		
# of Hd	Ratio	
BW	8	102
WW	8	100
MPPA	100	

HB	GM	CED	BW	WW	YW	ADG	DMI	M	ME	HPG	CEM	ST	MARB	YG	CW	REA	FAT
189	46	12	-0.6	61	87	0.16	1.11	21	2	11	7	19	0.27	0.10	10	-0.14	0.02
20%	68%	43%	66%	33%	55%	77%	30%	76%	52%	51%	41%	19%	68%	49%	80%	78%	45%

Bred to RED U2 Money Talks 530F for a Heifer calf, due 2/23/21.



# Bred Cows



Lot 23



23

REG. #1431414  
TR JULIAN LT151  
TR JULIAN WT951  
TR LANA G760

BUF CRK GIULIANI L851  
**MLK CRK LAKOTA 769**  
MLK CRK LAKOTA 356

**MLK CRK LAKOTA 194**

TATTOO: 194 BTK BD: 3/16/11 100% 1A

BECKTON JULIAN GG B571  
MS GEOMETRIC 917  
BECKTON CODY V E023  
BECKTON LANA E828 SC  
BKT JULIAN 7526 G  
BUF CRK MARIGOLD1230  
MLK CRK MARIAS 013  
MLK CRK LAKOTA 969

BW/Ratio	90	112
WW/Ratio	626	102
PROGENY AVERAGES		
# of Hd	Ratio	
BW	8	87
WW	8	93
MPPA	94	

HB	GM	CED	BW	WW	YW	ADG	DMI	M	ME	HPG	CEM	ST	MARB	YG	CW	REA	FAT
179	45	13	-3.3	51	80	0.18	0.98	24	1	14	7	18	0.17	0.19	13	-0.20	0.04
33%	84%	31%	19%	74%	72%	66%	21%	55%	50%	10%	58%	33%	90%	93%	69%	87%	92%

Bred to 5L The Real Deal 1687-143B for a Bull calf, due 2/21/21.



23A

**3 EMBRYOS**

100% 1A

RED RMJ REDMAN 1T  
**RED MINBURN COPENHAGEN 3Y**  
MINBURN MAY 112M

MLK CRK EXPRESS 9141  
**MLK CRK LAKOTA 2115**  
MLK CRK LAKOTA 932

5L NORSEMAN KING 2291  
CROWFOOT KURUBA 4033P  
CRESCENT CREEK MAIN EVENT 6H  
MINBURN MAY 90G  
5L GRAND EXPRESS 453-5655  
MLK CRK SHEBA 079  
RED CROWFOOT OLE'S OSCAR  
MLK CRK LAKOTA 330

HB	GM	CED	BW	WW	YW	ADG	DMI	M	ME	HPG	CEM	ST	MARB	YG	CW	REA	FAT
179	46	13	-2.2	58	89	0.20	1.42	25	-7	9	10	17	0.34	0.15	14	-0.13	0.03

PROJECTED EPDs

Lot 23A is an embryo lot out of a Milk Crk Express 9141 daughter that raised one of the top-selling bulls in our 2020 bull sale going to Bill Lansing of IA. She is an attractive patterned female that does everything right. The sire of this lot is none other than RED Minburn Copenhagen 3Y whose daughters topped the record-setting U2 sale in Canada. The progeny from this mating should be outstanding. Guaranteed one (1) pregnancy if put in by a certified embryo technician. The embryos are in storage at Sleeping Giant Genetics. Shipping is FOB.



MLK CRK LAKOTA 2115, donor dam of Lots 23A & 23B



23B

**3 EMBRYOS**

100% 1A

5L BOURNE 117-48A  
**5L VIGILANTE 2674-11D**  
5L OPAL 930-2674

MLK CRK EXPRESS 9141  
**MLK CRK LAKOTA 2115**  
MLK CRK LAKOTA 932

5L ADVANTAGE 3267-221Y  
5L ROXIE 854-117  
5L DEFENDER 560-30Z  
5L OPAL 2218-930  
5L GRAND EXPRESS 453-5655  
MLK CRK SHEBA 079  
RED CROWFOOT OLE'S OSCAR  
MLK CRK LAKOTA 330

HB	GM	CED	BW	WW	YW	ADG	DMI	M	ME	HPG	CEM	ST	MARB	YG	CW	REA	FAT
195	47	16	-4.6	52	84	0.20	1.40	25	-1	11	9	18	0.60	0.19	11	-0.18	0.05

PROJECTED EPDs

Lot 23B is represented by a picture of a natural full brother to this mating that sold in our 2020 bull sale to Wind A Near Ranch in Iowa. Sire in Top 5% for BW EPD, Top 12% for CED EPD and Top 11% for Marb EPD. Guaranteed one (1) pregnancy if put in by a certified embryo technician. The embryos are in storage at Sleeping Giant Genetics. Shipping is FOB.



Full Brother to Lot 23B





# Bred Heifers



Lot 24



24

## MLK CRK SALLEE 907

REG. # 4144030

TATTOO: 907 BTK BD: 2/8/19 100% 1A

5L DEFENDER 560-30Z  
5L THE REAL DEAL 1687-143B  
5L FIREFLY 275-1687

5L ADVOCATE 817-14W  
5L BLACK ADINA 525-560  
5L DESTINATION 893-6215  
5L FIREFLY 2573-275

LACY KING 9240  
MLK CRK SALLEE 389  
HRR SALLEE 766

LACY SIGNATURE 7006  
LACY LAKOTA 7155  
SHOCO DATA  
HRR SALLEE 212

BW/Ratio	93	117
WW/Ratio	669	111
Dam's MPPA	97	

HB	GM	CED	BW	WW	YW	ADG	DMI	M	ME	HPG	CEM	ST	MARB	YG	CW	REA	FAT
184	51	7	1.9	70	116	0.29	1.96	22	2	9	4	19	0.60	0.05	32	0.05	-0.01
19%	7%	98%	97%	14%	8%	6%	93%	71%	61%	82%	95%	10%	12%	23%	13%	46%	4%

Bred to MLK CRK Fusion 5202 for a Bull calf, due 2/28/21.

We begin the bred heifers with a 111 weaning ratio Real Deal sired heifer that is balanced with depth, length and function. The Real Deal sire group adds depth of rib and a broody cow look. She ranks in the top 20% or better for the RAAA Indices which also adds to her balance.



Lot 25



25

## MLK CRK EMUMAR 925

REG. # 4143974

TATTOO: 925 BTK BD: 2/12/19 100% 1A

5L DEFENDER 560-30Z  
5L THE REAL DEAL 1687-143B  
5L FIREFLY 275-1687

5L ADVOCATE 817-14W  
5L BLACK ADINA 525-560  
5L DESTINATION 893-6215  
5L FIREFLY 2573-275

MLK CRK EXPRESS 9127  
MLK CRK EMUMAR 152  
MLK CRK EMUMAR 959

5L GRAND EXPRESS 453-5655  
MLK CRK SHEBA 043  
BECKTON EPIC R397 K  
MLK CRK EMUMAR 854

BW/Ratio	89	112
WW/Ratio	640	107
Dam's MPPA	102	

HB	GM	CED	BW	WW	YW	ADG	DMI	M	ME	HPG	CEM	ST	MARB	YG	CW	REA	FAT
187	49	15	-0.7	59	95	0.23	2.07	22	1	14	8	17	0.68	-0.07	28	0.28	-0.02
17%	28%	15%	71%	54%	49%	42%	97%	77%	56%	11%	20%	37%	5%	3%	23%	9%	1%

Bred to RED Crowfoot Redman 3107A for a Bull calf, due 3/2/21.

After looking at some of the young Real Deal daughters in production at 5L and visiting with Larry about them, we are very excited about getting the half sisters to lot 25 into production. She brings the go-to cow maker Express 9127 on the bottom side of the pedigree while excelling at 7% and 8% above the herd average at weaning and yearling.



Lot 26



26

## MLK CRK SUN GAL 931

REG. # 4144422

TATTOO: 931 BTK BD: 2/14/19 100% 1A

5L BOURNE 117-48A  
5L VIGILANTE 2674-11D  
5L OPAL 930-2674

5L ADVANTAGE 3267-221Y  
5L ROXIE 854-117  
5L DEFENDER 560-30Z  
5L OPAL 2218-930

JACOBSON BLAZIN ON 0057  
MLK CRK SUN GAL 738X  
MLK CRK SUN GAL 2122

5L DOUBLE BLAZE 1134-8576  
5L FUSCHIA 643-3668  
MLK CRK EXPRESS 9141  
MLK CRK SUN GAL 880

BW/Ratio	66	92
WW/Ratio	630	112
Dam's MPPA	105	

HB	GM	CED	BW	WW	YW	ADG	DMI	M	ME	HPG	CEM	ST	MARB	YG	CW	REA	FAT
171	46	13	-3.6	54	86	0.20	1.55	27	-4	11	6	17	0.32	0.13	31	0.10	0.03
40%	84%	35%	17%	72%	68%	60%	67%	27%	19%	42%	67%	30%	66%	70%	15%	35%	63%

Bred to MLK CRK Fusion 5202 for a Heifer calf, due 2/28/21.

When developing a selection criteria for this sale, we used information that we feel will provide the genetics of these heifers to be successful in their new owner's herd. Lot 26's maternal granddam produced our high-selling bull in the 2020 sale to Rogers Cattle Company in Missouri.



# Bred Heifers



Lot 27



27

REG. # 4144198

**MLK CRK SUN GAL 920**

TATTOO: 920 BTK BD: 2/11/19 100% 1A

5L ADVANTAGE 3267-221Y  
**RIDGE PROVISION 6013**  
RIDGE MONA 8162-2057

BUF CRK THE RIGHT KIND U199  
5L ADINA 195-3267  
5L ZENITH 1425-5767  
RIDGE MONA 620-8162

ANDRAS FUSION R236  
**MLK CRK SUN GAL 501**  
MLK CRK SUN GAL 199X

ANDRAS IN FOCUS B175  
ANDRAS BELLE B167  
BECKTON EPIC R397 K  
BJR SUN GAL 4X-561

BW/Ratio	88	113
WW/Ratio	634	106
Dam's MPPA	104	

HB	GM	CED	BW	WW	YW	ADG	DMI	M	ME	HPG	CEM	ST	MARB	YG	CW	REA	FAT
189	48	8	-1.2	57	92	0.22	1.11	27	-4	14	5	19	0.40	0.14	19	-0.17	0.02
14%	40%	93%	61%	62%	54%	43%	26%	29%	19%	7%	89%	10%	46%	73%	61%	90%	34%

Bred to RED Crowfoot Redman 3107A for a Heifer calf, due 2/28/21.

Our Ridge Provision 6013 daughters tend to be the dark red color that many breeders appreciate. Color is a bonus to the great pedigree on the bottom side along with weaning and yearling ratios ranking 6% above the herd average. The Redman heifer calf that she is carrying will extend the right type of female for the next generation.



Lot 28



28

REG. # 4144446

**MLK CRK LANA 962**

TATTOO: 962 BTK BD: 2/22/19 100% 1A

BUF CRK THE RIGHT KIND U199  
**5L FIRECRACKER 560-117A**  
5L BLACK ADINA 525-560

BUF CRK LANCER R017  
BUF CRK SHOSHONE R353  
TC STOCKMAN 365  
5L ADINA 293-525

JACOBSON BLAZIN ON 0057  
**MLK CRK LANA 732X**  
TR LANA AT305

5L DOUBLE BLAZE 1134-8576  
5L FUSCHIA 643-3668  
TR JULIAN XT001  
TR LANA NT329

BW/Ratio	66	92
WW/Ratio	619	110
Dam's MPPA	104	

HB	GM	CED	BW	WW	YW	ADG	DMI	M	ME	HPG	CEM	ST	MARB	YG	CW	REA	FAT
176	46	19	-4.3	50	69	0.12	0.91	24	-10	14	9	15	0.54	0.07	9	0.07	0.03
31%	80%	1%	10%	83%	92%	97%	16%	51%	3%	6%	16%	61%	19%	30%	89%	41%	76%

Bred to 5L Cow Boss 3697-34G for a Heifer calf, due 3/27/21.

This Firecracker daughter is attractive fronted with good spring and depth of rib giving her an appearance of the type of cow we like. She weaned off 10% ahead of her contemporaries and had continued to grow into a good young female.



29

REG. # 4144488  
**MUSHRUSH IMPACT Z352**  
MUSHRUSH ZENA JL X320

**MLK CRK CROWFOOT BIRD 958**

TATTOO: 958 BTK BD: 2/21/19 100% 1A

RIDGE LEGEND 2069  
**MLK CRK CROWFOOT BIRD 762**  
MLK CRK CROWFOOT 5104

BUF CRK LANCER R017  
MUSHRUSH MADAM LT R265  
BECKTON JULIAN G1 J526  
MUSHRUSH ZENA EP U339  
5L LEGEND 1553-425V  
RIDGE AQUILA 552-8066  
HRR IMPRESSIVE 227  
MLK CRK CROWFOOT 0117

BW/Ratio	60	84
WW/Ratio	634	113
Dam's MPPA	103	

HB	GM	CED	BW	WW	YW	ADG	DMI	M	ME	HPG	CEM	ST	MARB	YG	CW	REA	FAT
206	46	20	-6.2	56	90	0.21	1.32	26	-1	13	10	18	0.31	0.16	13	0.01	0.06
3%	75%	1%	1%	63%	61%	57%	44%	36%	33%	21%	3%	14%	69%	85%	80%	55%	98%

Bred to MLK CRK Fusion 5202 for a Bull calf, due 2/28/21.

Moderate framed with a tanky look best describes this Impact daughter. She ranks in the top 3% of the HerdBuilder index while posting a 113 and 110 weaning and yearling index.





# Bred Heifers



Lot 30



30

## MLK CRK LAKOTA 981

REG. # 4144382  
BUF CRK THE RIGHT KIND U199  
**5L FIRECRACKER 560-117A**  
5L BLACK ADINA 525-560

5L ADVANTAGE 3267-221Y  
**MLK CRK LAKOTA 756**  
MLK CRK LAKOTA 829

TATTOO: 981 BTK BD: 2/27/19 100% 1A

BUF CRK LANCER R017  
BUF CRK SHOSHONE R353  
TC STOCKMAN 365  
5L ADINA 293-525

BUF CRK THE RIGHT KIND U199  
5L ADINA 195-3267  
SHOCO DATA  
MLK CRK LAKOTA 876

BW/Ratio	73	101
WW/Ratio	612	109
Dam's MPPA	104	

HB	GM	CED	BW	WW	YW	ADG	DMI	M	ME	HPG	CEM	ST	MARB	YG	CW	REA	FAT
171	49	14	-2.7	57	80	0.14	1.04	22	-6	13	5	16	0.80	0.03	4	-0.10	0.01
39%	31%	31%	31%	60%	80%	92%	22%	72%	12%	18%	82%	51%	1%	17%	96%	80%	17%

Bred to MLK CRK Fusion 5202 for a Heifer calf, due 2/28/21.



Lot 31



31

## MLK CRK RED TOP 984

REG. # 4144480  
MUSHRUSH IMPRESSIVE CA U236  
**MUSHRUSH IMPACT Z352**  
MUSHRUSH ZENA JL X320

MLK CRK ADVOCATE 4304  
**MLK CRK RED TOP 7107**  
MLK CRK RED TOP 4108

TATTOO: 984 BTK BD: 3/1/19 100% 1A

BUF CRK LANCER R017  
MUSHRUSH MADAM LT R265  
BECKTON JULIAN G1 J526  
MUSHRUSH ZENA EP U339

5L SECRET AGENT 117-229Z  
MLK CRK SHEBA 1014  
BUF CRK JUST RIGHT X116  
MLK CRK RED TOP 828

BW/Ratio	70	97
WW/Ratio	614	109
Dam's MPPA	99	

HB	GM	CED	BW	WW	YW	ADG	DMI	M	ME	HPG	CEM	ST	MARB	YG	CW	REA	FAT
212	47	11	-4.5	62	95	0.21	1.48	23	0	17	2	22	0.47	0.17	19	0.02	0.05
2%	57%	67%	8%	42%	47%	53%	59%	67%	45%	1%	98%	1%	31%	88%	60%	53%	97%

Bred to 5L Cow Boss 3697-34G for a Heifer calf, due 3/22/21.

Combining Impact with Advocate 4304 produced this dark red, attractive bred heifer that ranks in the breed's top 2% for the HerdBuilder index. She posted a 109 and 108 weaning and yearling index while maintaining an easy-fleshing look.



Lot 32



32

## MLK CRK THUNDER 9148

REG. # 4143984  
XO CROWFOOT 0102X  
**RED OLEFARMS.COM 301C**  
RED OLE DAQUARI 102Y

MUSHRUSH IMPRESSIVE CA U236  
**MLK CRK THUNDER 257**  
MLK CRK THUNDER 063

TATTOO: 9148 BTK BD: 4/2/19 100% 1A

RED CROWFOOT MOONSHINE 8081U  
XO CROWFOOT BLACKBIRD 8810U  
RED CROWFOOT OLE'S OSCAR  
RED RICOSHAE FLOWER 18S

BUF CRK LANCER R017  
MUSHRUSH MADAM LT R265  
5L BLAZIN TRAIL 1336-237V  
HRR THUNDER 751

BW/Ratio	95	120
WW/Ratio	623	104
Dam's MPPA	106	

HB	GM	CED	BW	WW	YW	ADG	DMI	M	ME	HPG	CEM	ST	MARB	YG	CW	REA	FAT
167	47	9	-0.2	69	99	0.19	1.55	25	-7	19	2	16	0.43	0.14	2	-0.17	0.04
47%	66%	90%	73%	16%	38%	68%	67%	45%	10%	1%	99%	42%	41%	75%	97%	90%	91%

Bred to MLK CRK Fusion 5202 for a Heifer calf, due 2/28/21.



# Bred Heifers



33

## MLK CRK LAKOTA 9139

REG. # 4144220 TATTOO: 9139 BTK BD: 3/27/19 100% 1A

RED LAZY MC REDMAN 94Y  
RED CROWFOOT REDMAN 3107A  
RED CROWFOOT BRNDINA 1103Y

RED RMJ REDMAN 1T  
RED BROX ICECAP 1R  
RED CROWFOOT MOONSHINE 8081U  
RED CROWFOOT BRNDINA 6378S

LACY KING 9240  
MLK CRK LAKOTA 580  
MLK CRK LAKOTA 878

LACY SIGNATURE 7006  
LACY LAKOTA 7155  
BECKTON EPIC R397 K  
MLK CRK LAKOTA 559

BW/Ratio	74	94
WW/Ratio	655	109
Dam's MPPA	104	

HB	GM	CED	BW	WW	YW	ADG	DMI	M	ME	HPG	CEM	ST	MARB	YG	CW	REA	FAT
203	46	17	-2.9	49	79	0.19	1.19	23	-6	12	10	19	0.49	0.23	7	-0.28	0.06
5%	78%	4%	28%	86%	82%	72%	32%	69%	11%	28%	5%	11%	28%	98%	93%	98%	98%

Bred to 5L Cow Boss 3697-34G for a Heifer calf, due 3/20/21.



34

## MLK CRK LAKOTA 933

REG. # 4144186 TATTOO: 933 BTK BD: 2/15/19 100% 1A

5L SECRET AGENT 117-229Z  
MLK CRK ADVOCATE 4304  
MLK CRK SHEBA 1014

5L ADVOCATE 817-14W  
5L ROXIE 854-117  
MLK CRK REDSTONE  
MLK CRK SHEBA 966X

5L LEGEND 1553-425V  
MLK CRK LAKOTA 543  
MLK CRK LAKOTA 319

5L LAKOTA LEGEND 7074  
5L HAZEL 45L-1553  
BECKTON EPIC R397 K  
MLK CRK LAKOTA 912

BW/Ratio	78	101
WW/Ratio	627	104
Dam's MPPA	101	

HB	GM	CED	BW	WW	YW	ADG	DMI	M	ME	HPG	CEM	ST	MARB	YG	CW	REA	FAT
168	48	10	-1.1	63	97	0.22	1.68	21	-2	17	3	16	0.65	0.13	6	-0.05	0.05
45%	36%	82%	63%	37%	42%	49%	78%	79%	29%	1%	97%	47%	7%	69%	95%	70%	95%

Bred to 5L Fast Break 117-324E for a Heifer calf, due 3/20/21.

When looking for the right females to move forward with, sometimes the heifer that doesn't do anything wrong ends up being one of the best cows.



Lot 35



35

## MLK CRK BLOCKANA 9141

REG. # 4144134 TATTOO: 9141 BTK BD: 3/28/19 100% 1A

5L LEGEND 1553-425V  
RIDGE ADMIRAL 3411  
RIDGE GRANDIOSE 629-1112

5L LAKOTA LEGEND 7074  
5L HAZEL 45L-1553  
MLK CRK EXPRESS 9127  
RIDGE GRANDIOSE 435-629

MLK CRK BLAZIN TRAIL 1162  
MLK CRK BLOCKANA 4119  
MLK CRK BLOCKANA 754

5L BLAZIN TRAIL 1336-237V  
HRR THUNDER 751  
RED YY RED KNIGHT 640F  
FEODES BLOCKANA 940

BW/Ratio	86	108
WW/Ratio	630	105
Dam's MPPA	103	

HB	GM	CED	BW	WW	YW	ADG	DMI	M	ME	HPG	CEM	ST	MARB	YG	CW	REA	FAT
153	46	7	1.9	66	96	0.19	1.85	23	0	16	2	16	0.44	0.14	25	0.17	0.05
69%	80%	97%	97%	26%	44%	67%	89%	69%	41%	3%	99%	38%	37%	73%	33%	22%	94%

Bred to 5L Cow Boss 3697-34G for a Heifer calf, due 3/22/21.



Lot 36



36

## MLK CRK LAKOTA 912

REG. # 4143948 TATTOO: 912 BTK BD: 2/9/19 100% 1A

5L BOURNE 117-48A  
5L VIGILANTE 2674-11D  
5L OPAL 930-2674

5L ADVANTAGE 3267-221Y  
5L ROXIE 854-117  
5L DEFENDER 560-30Z  
5L OPAL 2218-930

5L TRAILBLAZER 1766-188V  
MLK CRK MALTA 066  
MLK CRK MALTA 864

5L TRAVLIN EXPRESS 1892-6295  
5L SERENA 3234-1766  
MLK CRK DATA 4156  
MLK CRK MALTA 176

BW/Ratio	82	103
WW/Ratio	661	110
Dam's MPPA	104	

HB	GM	CED	BW	WW	YW	ADG	DMI	M	ME	HPG	CEM	ST	MARB	YG	CW	REA	FAT
197	49	14	-4.2	58	94	0.23	1.36	24	-2	13	7	18	0.60	0.08	16	0.07	0.03
7%	23%	26%	11%	57%	50%	42%	48%	56%	30%	13%	47%	18%	12%	40%	69%	41%	63%

Bred to MLK CRK Fusion 5202 for a Heifer calf, due 2/28/21.

We continue to use Vigilante in our breeding program because he brings calving ease with more rib shape and fleshing ability than most calving ease bulls. Lot 36 carries these characteristics as well as performance that ranked her 7th at weaning and 20th at a year of age against her 92 classmates.





# Bred Heifers



Lot 37



37

REG. # 4144104

## MLK CRK LANA 913

TATTOO: 913 BTK BD: 2/10/19 100% 1A

5L SECRET AGENT 117-229Z  
**MLK CRK ADVOCATE 4304**  
MLK CRK SHEBA 1014

5L ADVOCATE 817-14W  
5L ROXIE 854-117  
MLK CRK REDSTONE  
MLK CRK SHEBA 966X

5L LEGEND 1553-425V  
**MLK CRK LANA 470**  
MLK CRK LANA 2281

5L LAKOTA LEGEND 7074  
5L HAZEL 45L-1553  
MLK CRK REDSTONE  
MLK CRK LANA 264

BW/Ratio	75	TWN
WW/Ratio	656	TWN
Dam's MPPA	104	

HB	GM	CED	BW	WW	YW	ADG	DMI	M	ME	HPG	CEM	ST	MARB	YG	CW	REA	FAT
161	49	6	1.7	82	120	0.24	1.80	22	-2	17	1	16	0.46	0.07	27	0.33	0.04
56%	22%	99%	96%	1%	5%	32%	86%	71%	29%	1%	99%	48%	33%	30%	26%	6%	84%

Bred to 5L Fast Break 117-324E for a calf, due 4/5/21.

This dark red attractive heifer is what we have come to expect out of her sire. Lot 37 continues to represent her sire with above-average performance and breed-leading EPDs for growth and carcass. This heifer is out of the 470 cow that we have flushed and will be selling embryos as Lot 37A.



37A

## 4 EMBRYOS

100% 1A

5L ADVANTAGE 3267-221Y  
**RIDGE PROVISION 6013**  
RIDGE MONA 8162-2057

BUF CRK THE RIGHT KIND U199  
5L ADINA 195-3267  
5L ZENITH 1425-5767  
RIDGE MONA 620-8162

5L LEGEND 1553-425V  
**MLK CRK LANA 470**  
MLK CRK LANA 2281

5L LAKOTA LEGEND 7074  
5L HAZEL 45L-1553  
MLK CRK REDSTONE  
MLK CRK LANA 264

HB	GM	CED	BW	WW	YW	ADG	DMI	M	ME	HPG	CEM	ST	MARB	YG	CW	REA	FAT
182	47	12	-1.7	57	90	0.21	1.33	28	-3	15	6	17	0.25	0.04	13	0.05	0.01

PROJECTED EPDs

Lana 470 is a dark-red, sharp-fronted Legend daughter that has produced attractive productive offspring like her daughter being sold as Lot 37. We are offering embryos from this dam and sired by the Ridge Provision that should add to the dark red color and the productive, functional cattle that work for us. Guaranteed one (1) pregnancy if put in by a certified embryo technician. The embryos are in storage at Sleeping Giant Genetics. Shipping is FOB.



Lot 38



38

REG. # 4143988

## MLK CRK RED TOP 927

TATTOO: 927 BTK BD: 2/12/19 100% 1A

5L DEFENDER 560-30Z  
**5L THE REAL DEAL 1687-143B**  
5L FIREFLY 275-1687

5L ADVOCATE 817-14W  
5L BLACK ADINA 525-560  
5L DESTINATION 893-6215  
5L FIREFLY 2573-275

MLK CRK EPIC 8171  
**MLK CRK RED TOP 231**  
MLK CRK RED TOP 070

BECKTON EPIC R397 K  
MLK CRK SHEBA 403  
5L TRAILBLAZER 1766-188V  
MLK CRK RED TOP 828

BW/Ratio	92	116
WW/Ratio	643	107
Dam's MPPA	103	

HB	GM	CED	BW	WW	YW	ADG	DMI	M	ME	HPG	CEM	ST	MARB	YG	CW	REA	FAT
177	50	11	-0.6	62	107	0.28	2.13	22	4	11	7	17	0.67	0.11	29	0.12	0.03
30%	17%	69%	72%	40%	21%	8%	98%	74%	80%	52%	60%	31%	6%	58%	20%	31%	58%

Bred to 5L Fast Break 117-324E for a Bull calf, due 3/20/21.



# Bred Heifers



Lot 39



39

REG. # 4144002  
5L DEFENDER 560-30Z  
**5L THE REAL DEAL 1687-143B**  
5L FIREFLY 275-1687

BECKTON EPIC R397 K  
**MLK CRK SHEBA 211**  
MLK CRK SHEBA 731

## MLK CRK SHEBA 929

TATTOO: 929 BTK BD: 2/14/19 100% 1A

5L ADVOCATE 817-14W  
5L BLACK ADINA 525-560  
5L DESTINATION 893-6215  
5L FIREFLY 2573-275

BECKTON EPIC K F075  
BECKTON KIT F468 JL  
MLK CRK TITLEIST 4158  
BJR SHEBA 4X-551

BW/Ratio	81	102
WW/Ratio	655	109
Dam's MPPA	104	

HB	GM	CED	BW	WW	YW	ADG	DMI	M	ME	HPG	CEM	ST	MARB	YG	CW	REA	FAT
197	46	13	-3.8	56	92	0.22	2.03	25	7	12	8	20	0.53	0.12	26	-0.01	0.02
8%	71%	38%	15%	64%	56%	44%	96%	46%	92%	37%	27%	5%	21%	62%	29%	62%	34%

Bred to RED Crowfoot Redman 3107A for a Bull calf, due 2/28/21.

After the weights were taken, Lot 39 came in 11th in her weaning class and 6th in her yearling class when compared to 92 of her heifer mates. This performance combined with great stayability and as well as marbling EPDs allows her to be well rounded.



40

REG. # 4144184  
5L ADVANTAGE 3267-221Y  
**RIDGE PROVISION 6013**  
RIDGE MONA 8162-2057

ANDRAS FUSION R236  
**MLK CRK LAKOTA 517**  
MLK CRK LAKOTA 317

## MLK CRK LAKOTA 932

TATTOO: 932 BTK BD: 2/15/19 100% 1A

BUF CRK THE RIGHT KIND U199  
5L ADINA 195-3267  
5L ZENITH 1425-5767  
RIDGE MONA 620-8162

ANDRAS IN FOCUS B175  
ANDRAS BELLE B167

LACY KING 9240  
MLK CRK LAKOTA 113

BW/Ratio	75	97
WW/Ratio	622	104
Dam's MPPA	104	

HB	GM	CED	BW	WW	YW	ADG	DMI	M	ME	HPG	CEM	ST	MARB	YG	CW	REA	FAT
199	46	13	-1.7	53	76	0.14	1.08	28	-6	14	7	20	0.39	-0.01	9	-0.07	-0.01
6%	78%	38%	51%	74%	85%	92%	24%	20%	13%	7%	44%	7%	49%	9%	89%	74%	4%

Bred to 5L Fast Break 117-324E for a Bull calf, due 3/22/21.



Lot 41



41

REG. # 4143992  
5L ADVANTAGE 3267-221Y  
**RIDGE PROVISION 6013**  
RIDGE MONA 8162-2057

5L TRAILBLAZER 1766-188V  
**MLK CRK LAKOTA 2106**  
MLK CRK LAKOTA 092

## MLK CRK LAKOTA 975

TATTOO: 975 BTK BD: 2/25/19 100% 1A

BUF CRK THE RIGHT KIND U199  
5L ADINA 195-3267  
5L ZENITH 1425-5767  
RIDGE MONA 620-8162

5L TRAVLIN EXPRESS 1892-6295  
5L SERENA 3234-1766  
BECKTON EPIC R397 K  
MLK CRK LAKOTA 166

BW/Ratio	90	113
WW/Ratio	606	106
Dam's MPPA	100	

HB	GM	CED	BW	WW	YW	ADG	DMI	M	ME	HPG	CEM	ST	MARB	YG	CW	REA	FAT
214	49	6	1.2	62	99	0.23	1.19	24	-3	14	3	23	0.27	-0.02	9	0.10	0.00
2%	29%	98%	94%	41%	39%	38%	32%	58%	26%	7%	96%	1%	79%	7%	89%	35%	12%

Bred to 5L Fast Break 117-324E for a Bull calf, due 3/18/21.





# Bred Heifers



Lot 42



42

REG. # 4144510

## MLK CRK OMEGA 9143

TATTOO: 9143 BTK BD: 3/29/19 100% 1A

BECKTON ACCENT U777 C2  
**BECKTON ACCENT D306 E3**  
BECKTON TAMARA Y685 E

BECKTON CODY K1 P014  
BECKTON SUSAN R022 CQ  
BECKTON EPIC K4 N795  
BECKTON TAMARA U358 CT

RED U-2 FOREIGNER 413B  
**MLK CRK OMEGA 7132**  
MLK CRK OMEGA 889

U2 T.K.O.254Z  
RED U-2 ANEXA 8026U  
RED YY RED KNIGHT 640F  
RED CROWFOOT OMEGA 9179J

BW/Ratio	63	88
WW/Ratio	585	104
Dam's MPPA	98	

HB	GM	CED	BW	WW	YW	ADG	DMI	M	ME	HPG	CEM	ST	MARB	YG	CW	REA	FAT
175	41	22	-9.0	37	53	0.10	1.16	28	-6	15	10	16	0.13	0.11	15	0.03	0.04
33%	99%	1%	1%	98%	99%	99%	29%	17%	12%	3%	5%	44%	97%	57%	74%	51%	82%

Bred to 5L Cow Boss 3697-34G for a Heifer calf, due 3/20/21.

Lot 42 offers a pedigree that you won't find in many sales. She combines Beckton genetics with Canadian genetics that provide a lot of flexibility for mating options.



43

REG. # 4144126

## MLK CRK BONNEBELL 9150

TATTOO: 9150 BTK BD: 4/7/19 100% 1A

XO CROWFOOT 0102X  
**RED OLEFARMS.COM 301C**  
RED OLE DAQUARI 102Y

RED CROWFOOT MOONSHINE 8081U  
XO CROWFOOT BLACKBIRD 8810U  
RED CROWFOOT OLE'S OSCAR  
RED RICOSHAE FLOWER 18S

BECKTON EPIC R397 K  
**MLK CRK BONNEBELL 437**  
MLK CRK BONNEBELL 604

BECKTON EPIC K F075  
BECKTON KIT F468 JL  
MLK CRK TITLEIST 4158  
MLK CRK BONNEBELL 401

BW/Ratio	75	94
WW/Ratio	645	107
Dam's MPPA	101	

HB	GM	CED	BW	WW	YW	ADG	DMI	M	ME	HPG	CEM	ST	MARB	YG	CW	REA	FAT
183	46	17	-2.6	55	83	0.17	1.14	26	-4	17	10	15	0.47	0.24	13	-0.18	0.07
20%	80%	4%	32%	68%	75%	80%	28%	34%	21%	1%	3%	54%	31%	99%	82%	91%	99%

Bred to 5L Cow Boss 3697-34G for a calf, due 4/15/21.



Lot 44



44

REG. # 4144216

## MLK CRK SHEBA 955

TATTOO: 955 BTK BD: 2/21/19 100% 1A

5L LEGEND 1553-425V  
**RIDGE ADMIRAL 3411**  
RIDGE GRANDIOSE 629-1112

5L LAKOTA LEGEND 7074  
5L HAZEL 45L-1553  
MLK CRK EXPRESS 9127  
RIDGE GRANDIOSE 435-629

BECKTON EPIC R397 K  
**MLK CRK SHEBA 503**  
MLK CRK OMEGA 889

BECKTON EPIC K F075  
BECKTON KIT F468 JL  
RED YY RED KNIGHT 640F  
RED CROWFOOT OMEGA 9179J

BW/Ratio	82	106
WW/Ratio	664	111
Dam's MPPA	100	

HB	GM	CED	BW	WW	YW	ADG	DMI	M	ME	HPG	CEM	ST	MARB	YG	CW	REA	FAT
205	48	10	-1.5	56	95	0.24	1.28	25	-2	18	5	20	0.33	0.11	33	0.32	0.05
4%	42%	81%	54%	66%	48%	28%	40%	43%	30%	1%	89%	5%	64%	59%	12%	6%	93%

Bred to MLK CRK Fusion 5202 for a Heifer calf, due 2/28/21.

When you study pedigrees sometimes you find something on every line that is intriguing. Lot 44 combines Epic with Red Knight out of Ole Oscars Dam on the bottom side and then adds Legend by Express 9127 on the top side. When I add this up I find many great cows descending from the components of this pedigree.



# Bred Heifers



45

REG. # 4144116

## MLK CRK LAKOTA 941

TATTOO: 941 BTK BD: 2/18/19 100% 1A

5L ADVANTAGE 3267-221Y  
RIDGE PROVISION 6013  
RIDGE MONA 8162-2057

BUF CRK THE RIGHT KIND U199  
5L ADINA 195-3267  
5L ZENITH 1425-5767  
RIDGE MONA 620-8162

ANDRAS FUSION R236  
MLK CRK LAKOTA 434  
MLK CRK LAKOTA 429

ANDRAS IN FOCUS B175  
ANDRAS BELLE B167  
SHOCO DATA  
MLK CRK LAKOTA 066

BW/Ratio	81	103
WW/Ratio	599	100
Dam's MPPA	103	

HB	GM	CED	BW	WW	YW	ADG	DMI	M	ME	HPG	CEM	ST	MARB	YG	CW	REA	FAT
155	47	8	-1.7	52	85	0.21	1.05	28	-4	13	5	16	0.31	0.14	16	-0.19	0.02
67%	66%	94%	51%	80%	72%	57%	23%	21%	23%	20%	88%	47%	69%	74%	69%	92%	38%

Bred to Mushrush Impact Z352 for a Heifer calf, due 3/1/21.



Lot 46



46

REG. # 4144218

## MLK CRK SUN GAL 946

TATTOO: 946 BTK BD: 2/19/19 100% 1A

5L SECRET AGENT 117-229Z  
MLK CRK ADVOCATE 4304  
MLK CRK SHEBA 1014

5L ADVOCATE 817-14W  
5L ROXIE 854-117  
MLK CRK REDSTONE  
MLK CRK SHEBA 966X

5L LEGEND 1553-425V  
MLK CRK SUN GAL 538  
MLK CRK SUN GAL 888

5L LAKOTA LEGEND 7074  
5L HAZEL 45L-1553  
BUF CRK GIULIANI L851  
MLK CRK SUN GAL 552

BW/Ratio	93	120
WW/Ratio	577	101
Dam's MPPA	99	

HB	GM	CED	BW	WW	YW	ADG	DMI	M	ME	HPG	CEM	ST	MARB	YG	CW	REA	FAT
194	48	6	1.5	71	104	0.21	1.63	19	-2	18	1	20	0.55	0.18	7	0.02	0.08
9%	49%	98%	96%	11%	27%	58%	74%	93%	32%	1%	99%	3%	18%	91%	93%	53%	99%

Bred to 5L Fast Break 117-324E for a Heifer calf, due 3/12/21.

Lot 46 is a larger framed, deep-ribbed bred heifer with the dark red color and sharp front.



47

## MLK CRK RED TOP 972

REG. # 4144406 TATTOO: 972 BTK BD: 2/24/19 100% 1A

MUSHRUSH IMPRESSIVE CA U236  
MUSHRUSH IMPACT Z352  
MUSHRUSH ZENA JL X320

BUF CRK LANCER R017  
MUSHRUSH MADAM LT R265  
BECKTON JULIAN G1 J526  
MUSHRUSH ZENA EP U339

MLK CRK UNIFIED 4207  
MLK CRK RED TOP 759  
MLK CRK RED TOP 1010

ANDRAS FUSION R236  
MLK CRK LAKOTA 953  
TR JULIAN W7951  
MLK CRK RED TOP 828

BW/Ratio	67	93
WW/Ratio	563	100
Dam's MPPA	101	

HB	GM	CED	BW	WW	YW	ADG	DMI	M	ME	HPG	CEM	ST	MARB	YG	CW	REA	FAT
198	47	14	-4.2	60	95	0.22	1.48	26	2	15	8	19	0.44	0.15	25	0.15	0.05
7%	56%	31%	11%	48%	48%	49%	60%	38%	64%	3%	32%	12%	37%	78%	36%	26%	96%

Bred to 5L Foreman 2174-370E for a Heifer calf, due 3/1/21.



48

REG. # 4143990

## MLK CRK LANA 9140

TATTOO: 9140 BTK BD: 3/27/19 100% 1A

5L LEGEND 1553-425V  
RIDGE ADMIRAL 3411  
RIDGE GRANDIOSE 629-1112

5L LAKOTA LEGEND 7074  
5L HAZEL 45L-1553  
MLK CRK EXPRESS 9127  
RIDGE GRANDIOSE 435-629

MLK CRK REDSTONE  
MLK CRK LANA 2281  
MLK CRK LANA 264

TR JULIAN LT142  
MLK CRK LENA 763  
VDAR RAMBO 323  
MLK CRK LANA 704-HOBO

BW/Ratio	71	89
WW/Ratio	602	100
Dam's MPPA	104	

HB	GM	CED	BW	WW	YW	ADG	DMI	M	ME	HPG	CEM	ST	MARB	YG	CW	REA	FAT
195	48	13	-2.1	56	96	0.25	1.50	26	0	18	7	18	0.40	0.17	29	0.13	0.05
9%	48%	35%	42%	63%	45%	25%	62%	38%	39%	1%	60%	21%	46%	89%	20%	29%	96%

Bred to MLK CRK Fusion 5202 for a Heifer calf, due 3/1/21.

This heifer is the last natural calf out of the 2281 cow that we flushed. We found her dead last fall in a pasture. Also, we are selling embryo's Lot 37A out of her maternal sister.





# Rare Semen Packages



**BASIN HOBO 79E**



**A**

## BASIN HOBO 79E

REG. # 492175  
BUF CRK HOBO 1961  
**BUF CRK HOBO 2595**  
MRM 832 8220 9015

LEACHMAN EBV T007242  
**DOUBLE FORK 079Z**  
DOUBLE FORK 835

TATTOO: 79E	DES	BD: 3/15/95	100% 1A
[BUF CRK HOBO 1413 BUF CR CARRIE VC1174		BW/Ratio	73 92
[MRM SIOUX CHIEF 832 MRM 8016 F1712 8220		VW/Ratio	712 108
[LEACHMAN EBV 3531 LEACHMAN APRIL 6352		YW/Ratio	1070 101
[JHL DYNAMO 441 LAROK 2340-739		ADG/Ratio	2.24 90
		%IMF/Ratio	
		REA/Ratio	
		Fat/Ratio	
		Dam's MPPA/Age	107.0 5

HB	GM	CED	BW	WW	YW	ADG	DMI	M	ME	HPG	CEM	ST	MARB	YG	CW	REA	FAT
220	45	17	-6.0	45	67	0.13	0.80	35	-3	3	9	24	0.52	0.20	15	-0.15	0.05
2%	82%	11%	3%	92%	93%	93%	10%	2%	29%	99%	15%	1%	26%	90%	70%	83%	91%

3 Units

Hobo 79E left us with females that had exceptional udders and style. He currently has seven EPDs in the Top 15%



**BJR MAKE MY DAY 981**



**B**

## BJR MAKE MY DAY 981

REG. # 411482  
BJR HI ROLLER 211  
**BJR EASY RIDER 781**  
BJR DIPY DO 355-809

BJR FIRE-MAN 0150  
**BJR TOW KANA 117-710**  
BJR TOWKANA 355-71L

TATTOO: 1193	BJR	BD: 2/20/93	100% 1A
[BJR HI PRICE 360-86M BJR PRILEEN 830-0154		BW/Ratio	62 75
[BJR YOGO 002-104 MAN DIPPITY DO 1953		VW/Ratio	707 113
[IDARED FIREPOWER BJR LARKABA 625-2014		YW/Ratio	1213 119
[BJR YOGO 002-104 RD TOWAW BLOCKANA71L		ADG/Ratio	3.17 130
		%IMF/Ratio	
		REA/Ratio	
		Fat/Ratio	
		Dam's MPPA/Age	105.0 4

HB	GM	CED	BW	WW	YW	ADG	DMI	M	ME	HPG	CEM	ST	MARB	YG	CW	REA	FAT
160	49	11	-3.0	51	86	0.22	1.80	22	9	5	9	16	0.87	0.14	25	-0.07	0.02
56%	34%	66%	28%	81%	69%	50%	82%	72%	94%	99%	23%	37%	2%	66%	40%	69%	36%

5 Units

Make My Day produced attractive functional females and was used in many herds throughout the country.



**BJR MONU 4X-303**



**C**

## BJR MONU 4X-303

REG. # 491246  
LMAN MONU 4X  
**RED SSS MONU4X 237C**  
SSS BLOCKANNA 721A

SAMS PROSPECTOR 133Z  
**RCRA SAMANTHA**  
RCRA MS CARROUSEL

TATTOO: 2265	BJR	BD: 3/14/95	100% 1A
[LEACHMAN MONU 2X 8096 LEACHMAN BLOXY 6381		BW/Ratio	77 95
[BUF CRK BARON 1958 RED SSS BLOCKANNA 539Y		VW/Ratio	726 111
[TLA NORTHERN SAMURAI KBJ ROUND LASSIE 18T		YW/Ratio	1237 111
[DEKAP RED DALLS 345 ROCK CREEK LASA 7019		ADG/Ratio	3.19 111
		%IMF/Ratio	
		REA/Ratio	
		Fat/Ratio	
		Dam's MPPA/Age	103.0 2

HB	GM	CED	BW	WW	YW	ADG	DMI	M	ME	HPG	CEM	ST	MARB	YG	CW	REA	FAT
186	48	12	-1.2	67	107	0.25	1.58	15	14	7	6	20	0.11	0.02	18	-0.22	-0.03
20%	50%	61%	58%	27%	25%	27%	65%	97%	99%	95%	73%	7%	95%	14%	63%	90%	2%

5 Units

We purchased some Monu 4X daughters in the Bootjack dispersion that went on to become some of our top cows. They not only produced well in our environment they also stuck around until they were 12-14 years old



# Rare Semen Packages



FCC Rambo 502, sire



REG. # 274394

## BJR RAMBLER 5162

CV FOUR TIMES  
**FCC RAMBO 502**  
COPPER LASS 2392

BJR YOGO 002-104  
**BJR GOLDI 355-1122**  
BJR GOLDI 1706-856

TATTOO: 677	BJR	BD: 2/28/87	100% 1A
[UMPIRE 1000			
[CV MS JULY DUCHESS			
[RCN CANYON CHIEF			
[ZIMROXY 6239			
[BJR EXCEL-A-TOR			
[BJR DAKEL 830-967			
[LCHMN THNDRBLTJX1706			
[BECKTON GOLT-C			
BW/Ratio	65	97	
VW/Ratio	640	104	
YW/Ratio	1190	110	
ADG/Ratio	3.44	118	
%IMF/Ratio			
REA/Ratio			
Fat/Ratio			
Dam's MPPA/Age	99.0	2	

HB	GM	CED	BW	WW	YW	ADG	DMI	M	ME	HPG	CEM	ST	MARB	YG	CW	REA	FAT
145	45	12	-3.2	36	64	0.17	1.07	23	-1	6	7	16	0.30	0.12	7	-0.16	0.03
75%	90%	53%	25%	98%	95%	78%	23%	65%	37%	97%	49%	45%	68%	56%	89%	84%	59%

5 Units

Accelerated sire that produced big barreled, great uddered females.



GLACIER CHATEAU 744



REG. # 557331

## GLACIER CHATEAU 744

LEACHMAN ROBUST 7222  
**LMAN KING ROB 8621**  
LEACHMAN ELEANOR

LCHMN MDLD HVYWT2463  
**GLACIER REBALA**  
GLACIER REBALAS

TATTOO: 744	CPH	BD: 2/19/97	100% 1A
[RCN DYNAMO 614			
[LEACHMAN DUCHESS6463			
[JTL 9004 KING KONG			
[PRF ELEANOR L015			
[MIDLAND CHIEF J4121			
[LEACHMAN ANNA 702			
[CREEK SIDE COPPER			
[GLACIER HI-RB-LS			
BW/Ratio	82	104	
VW/Ratio	777	113	
YW/Ratio	1350	121	
ADG/Ratio	3.58	134	
%IMF/Ratio			
REA/Ratio			
Fat/Ratio			
Dam's MPPA/Age	103.0	8	

HB	GM	CED	BW	WW	YW	ADG	DMI	M	ME	HPG	CEM	ST	MARB	YG	CW	REA	FAT
155	47	10	-2.3	56	93	0.23	1.61	26	11	7	9	16	0.28	0.08	20	0.15	0.03
63%	64%	75%	38%	66%	55%	42%	68%	37%	97%	93%	20%	41%	72%	34%	56%	29%	63%

4 Units

Popular Genex sire that left his mark on the breed with a current progeny total of 5,877.



BFCK CHEROKEE CNYN 4912



REG. # 574873

## BFCK CHEROKEE CNYN 4912

BUF CRK CHIEF092-824  
**BUF CRK CHF 824-1658**  
BFLO CRK CARIE VC473

BUF CRK CHEROKEE1431  
**MRM 1431 8611 9109**  
MRM 8454 8219 8611

TATTOO: 4912	BUF	BD: 4/14/97	100% 1A
[RCN CANYON CHIEF 092			
[BUF CREEK LOLA 628			
[BFLO CR VC CHIEF 105			
[BFLO CRK CARRIE 3391			
[RED MEM CHEROKEE CHIEF 124N			
[RED MAC MISS 41R 28T			
[MRM PRIMERO			
[MRM 8016 109 8219			
BW/Ratio	71	87	
VW/Ratio	689	117	
YW/Ratio	1137	115	
ADG/Ratio	2.80	113	
%IMF/Ratio			
REA/Ratio			
Fat/Ratio			
Dam's MPPA/Age	110.0	6	

HB	GM	CED	BW	WW	YW	ADG	DMI	M	ME	HPG	CEM	ST	MARB	YG	CW	REA	FAT
147	47	12	-1.5	65	90	0.16	1.32	22	-1	7	1	16	0.37	-0.02	23	0.43	0.02
73%	65%	56%	53%	31%	60%	86%	42%	73%	40%	93%	98%	45%	53%	7%	46%	6%	45%

3 Units

One of the higher used sires within the breed during his era.





# Rare Semen Packages



LMAN KING ROB 8621



**G**  
REG. # 335067

## LMAN KING ROB 8621

RCN DYNAMO 614  
**LEACHMAN ROBUST 7222**  
LEACHMAN DUCHESS6463

JTL 9004 KING KONG  
**LEACHMAN ELEANOR**  
PRF ELEANOR L015

TATTOO: 8621	LBC	BD: 2/16/90	100% 1A
[JHL DYNAMO 417 RCN INDIGO-B4018	BW/Ratio	90	106
[LEACHMAN PRF-R012 LEACHMAN DUCHESS1631	VW/Ratio	586	118
[PBC D0202 6M H3554 WIX 425 5004C	YW/Ratio	1257	127
[PBC D0202 6M H0904 PBC C0949 6F F1612	ADG/Ratio	4.19	137
	%IMF/Ratio		
	REA/Ratio		
	Fat/Ratio		
	Dam's MPPA/Age	110.0	2

HB	GM	CED	BW	WW	YW	ADG	DMI	M	ME	HPG	CEM	ST	MARB	YG	CW	REA	FAT
124	47	8	0.6	59	107	0.30	1.53	27	12	11	8	12	-0.01	0.13	28	0.11	0.04
91%	55%	90%	86%	54%	26%	9%	61%	25%	99%	54%	32%	85%	98%	65%	30%	35%	72%

### 5 Units

King Rob is found throughout numerous pedigrees of the Red Angus database. His influence was based on the thickness and style that he offered the breed at the time he came into popularity. He currently has 6,336 progeny recorded in REDSPro.



BIEBER MAKE MIMI 7249



**H**  
REG. # 663262

## BIEBER MAKE MIMI 7249

BJR EASY RIDER 781  
**BJR MAKE MY DAY 981**  
BJR TOW KANA 117-710

BIEBER IMPACT 4399  
**BIEBER SIRENA 6708**  
BIEBER MIMI 4227

TATTOO: 7249	RAB	BD: 2/13/99	100% 1A
[BJR HI ROLLER 211 BJR DIPY DO 355-809	BW/Ratio	74	96
[BJR FIRE-MAN 0150 BJR TOWKANA 355-71L	VW/Ratio	689	118
[T3 CHIEF 2887 BIEBER SIERRA 3560	YW/Ratio	1266	110
[BIEBER DESIGN 1325-082 BIEBER MIMI 3418	ADG/Ratio	3.61	101
	%IMF/Ratio	3.92	93
	REA/Ratio	12.2	110
	Fat/Ratio	0.13	67
	Dam's MPPA/Age	105.0	2

HB	GM	CED	BW	WW	YW	ADG	DMI	M	ME	HPG	CEM	ST	MARB	YG	CW	REA	FAT
166	47	13	-2.6	58	89	0.20	1.94	23	4	8	8	17	0.54	0.00	38	0.32	-0.01
48%	63%	39%	34%	60%	63%	64%	89%	62%	76%	87%	38%	35%	23%	10%	10%	11%	5%

### 5 Units

Great female-producing sire that left many breeders with excellent uddered and footed cattle.



MLK CRK CUB 722



**I**  
REG. # 566636

## MLK CRK CUB 722

GLACIER GRIZ 146  
**GLACIER CUB 446**  
GLACIER FRITZ 241

BUF CRK HOB0 1961  
**MLK CRK LAKOTA 152-HOB0**  
MLK CRK LAKOTA 802-RAMB

TATTOO: 722	BTk	BD: 2/26/97	100% 1A
[GLACIER TOP POINT GLACIER LASS	BW/Ratio	92	109
[GLACIER EBV'S BEST GLACIER STORM 829	VW/Ratio	725	111
[BUF CRK HOB0 1413 BUF CR CARRIE VC1174	YW/Ratio	1195	113
[FCC RAMBO 502 PCH LAKOTA 112	ADG/Ratio	2.94	118
	%IMF/Ratio		
	REA/Ratio		
	Fat/Ratio		
	Dam's MPPA/Age	102.0	4

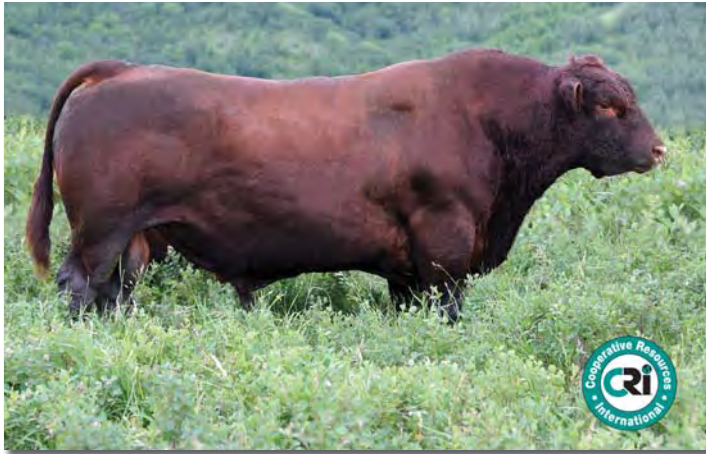
HB	GM	CED	BW	WW	YW	ADG	DMI	M	ME	HPG	CEM	ST	MARB	YG	CW	REA	FAT
157	45	8	-1.4	59	93	0.21	1.46	21	10	11	5	17	0.17	0.14	21	-0.31	0.00
60%	80%	90%	55%	54%	54%	53%	55%	78%	97%	50%	80%	28%	90%	70%	53%	96%	8%

### 5 Units

Cub is a sire that was the top-used sire in Canada two years in a row. He stamped his offspring with a very attractive front end and look. His daughters had beautiful udders and carried on that attractive look to their offspring. They also had good foot structure.



# Rare Semen Packages



RED CROWFOOT MOONSHINE 8081U



REG. # 1525818

## RED CROWFOOT MOONSHINE 8081U

TATTOO: 8081U CFCC BD: 1/12/08 100% 1A

CROWFOOT MAX 1743L

CROWFOOT 6004S

CROWFOOT BLACKCAP 4935P

RED CROWFOOT BIG DADDY 2058M

RED CROWFOOT BRNDINA 6359S

RED CROWFOOT BRNDINA 1065L

BASIN MAX 104J

GLADWALL LOVEMERE PET 8132

O C C MOONSHINE 740M

HILL FIRE ROSE 24G

MLK CRK CUB 722

RED CROWFOOT BLACKBIRD 9173J

MABES RAMBO TUO

RED CROWFOOT BRNDINA 838H

BW/Ratio	72	100
WW/Ratio	781	100
YW/Ratio		
ADG/Ratio		
%IMF/Ratio		
REA/Ratio		
Fat/Ratio		
Dam's MPPA/Age	100.0	2

HB	GM	CED	BW	WW	YW	ADG	DMI	M	ME	HPG	CEM	ST	MARB	YG	CW	REA	FAT
130	46	12	-1.2	77	114	0.23	1.68	12	-3	15	7	10	0.08	0.08	17	0.04	0.03
88%	68%	56%	58%	6%	16%	44%	74%	99%	30%	8%	44%	92%	96%	38%	64%	47%	51%

5 Units

Genex sire that came out of the Crowfoot dispersion selling to Ole Farms and Genex.



TR JULIAN LT142



REG. # 785183

## TR JULIAN LT142

TATTOO: LT142 TR2A BD: 2/21/01 100% 1A

BKT JULIAN 7526 G

BECKTON JULIAN GG B571

BKT MARTA 9A13 JL

BECKTON CODY V E023

TR LANA G760

BECKTON LANA E828 SC

BECKTON JULIAN 6592

BKT BELGA 6746 GS

BKT JULIAN 7526 G

BKT MARTA 6498 XM

BECKTON CODY C401

BECKTON BIRDIE C353 VG

BECKTON SCAMP 8954

BECKTON LANA B695 SG

BW/Ratio	76	92
WW/Ratio	782	113
YW/Ratio	1215	111
ADG/Ratio	2.70	106
%IMF/Ratio	4.41	125
REA/Ratio	15.2	116
Fat/Ratio	0.36	124
Dam's MPPA/Age	110.0	4

HB	GM	CED	BW	WW	YW	ADG	DMI	M	ME	HPG	CEM	ST	MARB	YG	CW	REA	FAT
165	47	19	-6.6	53	77	0.15	0.41	29	-1	13	9	13	0.28	0.07	-6	-0.21	0.02
49%	61%	3%	2%	76%	84%	89%	3%	15%	40%	27%	19%	73%	72%	30%	99%	90%	49%

5 Units

Mushrush Red Angus purchased this sire and proved him by producing some excellent females that we viewed when we toured their operation.



MLK CRK CAPSTONE 901



REG. # 671444

## MLK CRK CAPSTONE 901

TATTOO: 901 BTK BD: 2/8/99 100% 1A

BUF CRK CHIEF092-824

BUF CRK CHF 824-1658

BFLO CRK CARIE VC473

GLACIER LOGAN 210

MLK CRK BLOCKANNA 768

MLK CRK BLOCKANNA 576

RCN CANYON CHIEF 092

BUF CREEK LOLA 628

BFLO CR VC CHIEF 105

BFLO CRK CARRIE 3391

BFLO CR VC CHIEF 105

GLACIER REBALAS

GILCHRIST CHIEF W515

BJR KANA 441-4221

BW/Ratio	76	91
WW/Ratio	746	110
YW/Ratio	1303	107
ADG/Ratio	3.48	104
%IMF/Ratio	3.50	104
REA/Ratio	14.7	110
Fat/Ratio	0.15	88
Dam's MPPA/Age	105.0	2

HB	GM	CED	BW	WW	YW	ADG	DMI	M	ME	HPG	CEM	ST	MARB	YG	CW	REA	FAT
134	47	12	-2.0	68	107	0.25	2.00	24	10	12	9	12	0.36	0.19	30	-0.39	-0.01
86%	65%	52%	43%	24%	26%	31%	91%	50%	97%	41%	23%	84%	55%	87%	26%	98%	5%

5 Units

Capstone was a bull that added as much volume to cattle as I have seen. He produced many great females in herds around the country and his daughters here were attractive, big-barreled females that were easy fleshing.





# Rare Semen Packages



RED CROWFOOT OLE'S OSCAR



## RED CROWFOOT OLE'S OSCAR

REG. #1060209

TATTOO: 2042M \*CFCC BD: 1/16/02 100% 1A

GLACIER CUB 446  
**MLK CRK CUB 722**  
MLK CRK LAKOTA 152-HOBO

GLACIER GRIZ 146  
GLACIER FRITZ 241  
BUF CRK HOBO 1961  
MLK CRK LAKOTA 802-RAMB

RED PRICE 631  
**RED CROWFOOT OMEGA 9179J**  
RED OMEGA 7456

RED HIGH PRICE  
RED 980-730  
RED OSCAR S315  
ST JANICE 405

BW/Ratio	71	100
VW/Ratio	669	100
YW/Ratio	1286	100
ADG/Ratio	3.86	100
%IMF/Ratio		
REA/Ratio		
Fat/Ratio		
Dam's MPPA/Age	100.0	3

HB	GM	CED	BW	WW	YW	ADG	DMI	M	ME	HPG	CEM	ST	MARB	YG	CW	REA	FAT
203	49	15	-4.3	55	89	0.22	1.39	26	4	9	9	19	0.79	0.18	14	-0.25	0.03
7%	27%	22%	12%	71%	62%	51%	49%	36%	74%	75%	20%	9%	4%	83%	74%	93%	59%

4 Units

ABS sire that left his mark on the breed after being used for many seasons by numerous producers that resulted in 2,879 progeny being recorded in the RAAA database.



MLK CRK ADVOCATE 4304



## MLK CRK ADVOCATE 4304

REG. #1685793

TATTOO: 4304 BTK BD: 3/13/14 100% 1A

5L ADVOCATE 817-14W  
**5L SECRET AGENT 117-229Z**  
5L ROXIE 854-117

5L SIGNATURE 5615  
5L MARTA 345-817  
5L SIGNATURE 5615  
XXX ROXIE 854 MR

MLK CRK REDSTONE  
**MLK CRK SHEBA 1014**  
MLK CRK SHEBA 966X

TR JULIAN LT142  
MLK CRK LENA 763  
BECKTON EPIC R397 K  
MLK CRK SHEBA 333

BW/Ratio	82	98
VW/Ratio	815	120
YW/Ratio	1286	116
ADG/Ratio	2.93	110
%IMF/Ratio	4.71	150
REA/Ratio	14.3	114
Fat/Ratio	0.38	150
Dam's MPPA/Age	104.0	3

HB	GM	CED	BW	WW	YW	ADG	DMI	M	ME	HPG	CEM	ST	MARB	YG	CW	REA	FAT
179	49	3	1.3	80	111	0.19	1.88	18	-4	23	-2	18	0.78	0.13	14	0.20	0.07
28%	32%	99%	91%	4%	21%	69%	85%	92%	24%	1%	99%	17%	5%	64%	75%	22%	98%

5 Units

A sire we lost after a broken leg from a bull fight that we continue to use AI because of the balance of performance, phenotype, carcass and great females. He has 7 EPDs in the top 24% of the breed





# Open Heifers



Lot 49



49

REG. # 4292529

**MLK CRK SHEBA 012**

TATTOO: 012 BTK BD: 2/9/20 100% 1A

RED RMJ REDMAN 1T  
**RED MINBURN COPENHAGEN 3Y**  
MINBURN MAY 112M

[5L NORSEMAN KING 2291  
[CROWFOOT KURUBA 4033P  
[CRESCENT CREEK MAIN EVENT 6H  
[MINBURN MAY 90G

BECKTON EPIC R397 K  
**MLK CRK SHEBA 503**  
MLK CRK OMEGA 889

[BECKTON EPIC K F075  
[BECKTON KIT F468 JL  
[RED YY RED KNIGHT 640F  
[RED CROWFOOT OMEGA 9179J

BW/Ratio	87	105
WW/Ratio	584	103
Dam's MPPA	100	

HB	GM	CED	BW	WW	YW	ADG	DMI	M	ME	HPG	CEM	ST	MARB	YG	CW	REA	FAT
184	46	11	-1.1	58	92	0.21	1.30	25	-10	14	7	18	0.24	0.15	17	-0.05	0.04
20%	75%	71%	63%	55%	55%	54%	41%	41%	4%	6%	51%	21%	86%	78%	67%	70%	84%

We are offering some of the first Copenhagen offspring to be offered in the U.S. Lot 49 is mostly Canadian lineage with a shot of Epic. Stacking Copenhagen, Epic, Red Night and Ole's Oscar's dam makes for a good combination.



Lot 50



50

REG. # 4292579

**MLK CRK BONNEBELL 055**

TATTOO: 055 BTK BD: 2/17/20 100% 1A

RED U-2 RECKONING 149A  
**RED U2 MONEY TALKS 530F**  
RED U-2 MS DYNAMO 233B

[RED U-2 RECON 192Y  
[RED U-2 ANEXA 271Y  
[RED MINBURN COPENHAGEN 3Y  
[RED U-2 MS DYNAMO 234Z

LACY KING 9240  
**MLK CRK BONNEBELL 652**  
MLK CRK BONNEBELL 402

[LACY SIGNATURE 7006  
[LACY LAKOTA 7155  
[ANDRAS FUSION R236  
[MLK CRK BONNEBELL 001

BW/Ratio	84	103
WW/Ratio	576	99
Dam's MPPA	102	

HB	GM	CED	BW	WW	YW	ADG	DMI	M	ME	HPG	CEM	ST	MARB	YG	CW	REA	FAT
191	46	11	-2.3	50	80	0.19	1.22	25	-11	10	7	20	0.36	0.08	8	-0.03	0.03
12%	75%	67%	39%	85%	81%	71%	34%	46%	3%	72%	47%	6%	57%	39%	92%	65%	71%

This is the first offering of U2 Money Talks which was our pick of the 2019 U2 bull sale. From our research of the U2 program, these females should work.



Lot 51



51

REG. # 4292409

**MLK CRK THUNDER 0109**

TATTOO: 0109 BTK BD: 3/4/20 100% 1A

5L ADVANTAGE 3267-221Y  
**RIDGE PROVISION 6013**  
RIDGE MONA 8162-2057

[BUF CRK THE RIGHT KIND U199  
[5L ADINA 195-3267  
[5L ZENITH 1425-5767  
[RIDGE MONA 620-8162

MLK CRK EXPRESS 9141  
**MLK CRK THUNDER 4116**  
MLK CRK THUNDER 063

[5L GRAND EXPRESS 453-5655  
[MLK CRK SHEBA 079  
[5L BLAZIN TRAIL 1336-237V  
[HRR THUNDER 751

BW/Ratio	88	105
WW/Ratio	602	104
Dam's MPPA	102	

HB	GM	CED	BW	WW	YW	ADG	DMI	M	ME	HPG	CEM	ST	MARB	YG	CW	REA	FAT
174	46	9	-0.3	64	90	0.16	1.39	25	-4	13	6	18	0.33	0.03	11	0.02	0.01
34%	78%	92%	78%	33%	60%	84%	50%	49%	21%	16%	79%	18%	64%	17%	84%	53%	23%

Lot 51 is a long-made, attractive, dark red heifer calf that ratioed 104 at weaning against her contemporaries.





# Open Heifers



**52**

REG. # 4292523

**MLK CRK LAKOTA 071**

TATTOO: 071 BTK BD: 2/19/20 100% 1A

5L SECRET AGENT 117-229Z  
**MLK CRK ADVOCATE 4304**  
MLK CRK SHEBA 1014

5L ADVOCATE 817-14W  
5L ROXIE 854-117  
MLK CRK REDSTONE  
MLK CRK SHEBA 966X

LACY KING 9240  
**MLK CRK LAKOTA 5116**  
MLK CRK LAKOTA 953

LACY SIGNATURE 7006  
LACY LAKOTA 7155  
BECKTON EPIC R397 K  
MLK CRK LAKOTA 624

BW/Ratio	89	108
WW/Ratio	614	106
Dam's MPPA	104	

HB	GM	CED	BW	WW	YW	ADG	DMI	M	ME	HPG	CEM	ST	MARB	YG	CW	REA	FAT
185	49	5	0.7	71	104	0.20	1.55	23	-2	19	1	19	0.57	0.07	16	0.21	0.04
18%	31%	99%	90%	10%	28%	61%	66%	68%	28%	1%	99%	10%	15%	30%	72%	16%	89%

Deep ribbed and dark red best describes lot 52. She has the cow-making pedigree with Advocate 4304, Lacy King and Lot 3 as her granddam.



Lot 53



**53**

REG. # 4292751

**MLK CRK ASTER 0148**

TATTOO: 0148 BTK BD: 3/21/20 100% 1A

5L ADVANTAGE 3267-221Y  
**RIDGE PROVISION 6013**  
RIDGE MONA 8162-2057

BUF CRK THE RIGHT KIND U199  
5L ADINA 195-3267  
5L ZENITH 1425-5767  
RIDGE MONA 620-8162

MLK CRK LEGEND 5209  
**MLK CRK ASTER 728**  
MLK CRK ASTER 576

5L LEGEND 1553-425V  
MLK CRK SHEBA 1014  
MLK CRK EXPRESS 9141  
MLK CRK ASTER 923

BW/Ratio	67	84
WW/Ratio	617	106
Dam's MPPA	105	

HB	GM	CED	BW	WW	YW	ADG	DMI	M	ME	HPG	CEM	ST	MARB	YG	CW	REA	FAT
181	45	15	-5.3	48	75	0.17	1.12	27	-5	14	9	17	0.30	0.10	4	-0.18	0.03
23%	88%	18%	4%	88%	87%	82%	27%	23%	18%	6%	9%	32%	72%	51%	96%	91%	57%

Low birth weight and above-average growth are ingredients we like to see in cattle. The Provision daughters that we have in production are meeting our expectation of making good cattle.



Lot 54



**54**

REG. # 4292351

**MLK CRK SUN GAL 005**

TATTOO: 05 BTK BD: 2/6/20 100% 1A

5L DEFENDER 560-30Z  
**5L THE REAL DEAL 1687-1438**  
5L FIREFLY 275-1687

5L ADVOCATE 817-14W  
5L BLACK ADINA 525-560  
5L DESTINATION 893-6215  
5L FIREFLY 2573-275

BECKTON EPIC R397 K  
**MLK CRK SUN GAL 268**  
MLK CRK SUN GAL 888

BECKTON EPIC K F075  
BECKTON KIT F468 JL  
BUF CRK GIULIANI L851  
MLK CRK SUN GAL 552

BW/Ratio	86	103
WW/Ratio	612	105
Dam's MPPA	98	

HB	GM	CED	BW	WW	YW	ADG	DMI	M	ME	HPG	CEM	ST	MARB	YG	CW	REA	FAT
165	50	12	-0.9	68	118	0.31	2.09	20	5	15	6	14	0.52	0.14	35	0.19	0.04
50%	14%	53%	66%	18%	7%	3%	97%	88%	84%	3%	79%	70%	22%	74%	8%	19%	79%

Combining Real Deal with Epic leaves us with a ton of capacity in Lot 54.



# Open Heifers



55

REG. # 4292711

## MLK CRK LAKOTA 051

TATTOO: 051 BTK BD: 2/16/20 100% 1A

RED U-2 RECKONING 149A  
RED U2 MONEY TALKS 530F  
RED U-2 MS DYNAMO 233B

RED U-2 RECON 192Y  
RED U-2 ANEXA 271Y  
RED MINBURN COPENHAGEN 3Y  
RED U-2 MS DYNAMO 234Z

MLK CRK ADVOCATE 4304  
MLK CRK LAKOTA 7104  
MLK CRK LAKOTA 467

5L SECRET AGENT 117-229Z  
MLK CRK SHEBA 1014  
LACY KING 9240  
MLK CRK LAKOTA 2118

BW/Ratio	79	99
WW/Ratio	630	108
Dam's MPPA	101	

HB	GM	CED	BW	WW	YW	ADG	DMI	M	ME	HPG	CEM	ST	MARB	YG	CW	REA	FAT
179	46	8	-1.6	59	91	0.20	1.51	24	-10	13	4	19	0.34	0.14	15	-0.01	0.05
26%	78%	94%	53%	53%	57%	60%	62%	53%	3%	15%	94%	10%	61%	77%	72%	62%	92%



Lot 56



56

REG. # 4292749

## MLK CRK LAKOTA 096

TATTOO: 096 BTK BD: 2/26/20 100% 1A

RED U-2 RECKONING 149A  
RED U2 MONEY TALKS 530F  
RED U-2 MS DYNAMO 233B

RED U-2 RECON 192Y  
RED U-2 ANEXA 271Y  
RED MINBURN COPENHAGEN 3Y  
RED U-2 MS DYNAMO 234Z

MLK CRK ADVOCATE 4304  
MLK CRK LAKOTA 7106  
MLK CRK LAKOTA 5116

5L SECRET AGENT 117-229Z  
MLK CRK SHEBA 1014  
LACY KING 9240  
MLK CRK LAKOTA 953

BW/Ratio	82	103
WW/Ratio	597	103
Dam's MPPA	100	

HB	GM	CED	BW	WW	YW	ADG	DMI	M	ME	HPG	CEM	ST	MARB	YG	CW	REA	FAT
185	47	10	-1.5	59	91	0.20	1.45	25	-9	14	5	19	0.40	0.10	16	0.07	0.04
18%	67%	86%	54%	52%	58%	63%	57%	43%	4%	8%	88%	12%	46%	51%	70%	41%	81%

This attractive heifer combines our new U2 sire with an Advocate 4304 daughter which seems to work well. She is a 3/4 sister to lot 55.



Lot 57



57

REG. # 4292371

## MLK CRK FIREFLY 038

TATTOO: 038 BTK BD: 2/14/20 100% 1A

5L LEGEND 1553-425V  
RIDGE ADMIRAL 3411  
RIDGE GRANDIOSE 629-1112

5L LAKOTA LEGEND 7074  
5L HAZEL 45L-1553  
MLK CRK EXPRESS 9127  
RIDGE GRANDIOSE 435-629

MLK CRK BLAZIN TRAIL 1162  
MLK CRK FIREFLY 3109  
MLK CRK FIREFLY 4109

5L BLAZIN TRAIL 1336-237V  
HRR THUNDER 751  
MLK CRK FOUNDATION 110  
MLK CRK FIREFLY 251

BW/Ratio	94	113
WW/Ratio	582	100
Dam's MPPA	99	

HB	GM	CED	BW	WW	YW	ADG	DMI	M	ME	HPG	CEM	ST	MARB	YG	CW	REA	FAT
180	48	5	2.3	64	102	0.24	1.77	21	2	20	1	19	0.48	0.13	25	0.12	0.04
25%	44%	99%	98%	33%	32%	31%	84%	83%	59%	1%	99%	13%	29%	72%	35%	31%	89%





# Open Heifers



Lot 58



58

## MLK CRK BLOCKANA 043

REG. # 4292599  
5L LEGEND 1553-425V  
**RIDGE ADMIRAL 3411**  
RIDGE GRANDIOSE 629-1112

MLK CRK ADVOCATE 4304  
**MLK CRK BLOCKANA 632**  
MLK CRK BLOCKANA 754

IATTOO: 043 BTK BD: 2/14/20 100% 1A

5L LAKOTA LEGEND 7074  
5L HAZEL 45L-1553  
MLK CRK EXPRESS 9127  
RIDGE GRANDIOSE 435-629  
5L SECRET AGENT 117-229Z  
MLK CRK SHEBA 1014  
RED YY RED KNIGHT 640F  
FEDES BLOCKANA 940

BW/Ratio	89	109
WW/Ratio	629	108
Dam's MPPA	99	

HB	GM	CED	BW	WW	YW	ADG	DMI	M	ME	HPG	CEM	ST	MARB	YG	CW	REA	FAT
194	47	9	-0.6	63	96	0.21	1.49	22	-3	22	3	19	0.49	0.15	23	0.18	0.06
9%	53%	90%	72%	38%	46%	56%	60%	73%	24%	1%	97%	12%	28%	80%	41%	21%	98%

Ranking 15th out of 121 is a good start to making a good female. Using a sire like Admiral or Advocate 4304 also gives lot 58 an advantage to become a good female. We have used these 2 sires hard over the past several years and are seeing good results in their young females in production.



59

## MLK CRK SHEBA 003

REG. # 4292535 IATTOO: 03 BTK BD: 2/6/20 100% 1A  
5L DEFENDER 560-30Z  
**5L THE REAL DEAL 1687-143B**  
5L FIREFLY 275-1687

RIDGE LEGEND 2069  
**MLK CRK SHEBA 545**  
MLK CRK SHEBA 357

5L ADVOCATE 817-14W  
5L BLACK ADINA 525-560  
5L DESTINATION 893-6215  
5L FIREFLY 2573-275  
5L LEGEND 1553-425V  
RIDGE AQUILA 552-8066  
RIDGE TRADESMAN 6237-0002  
MLK CRK SHEBA 945

BW/Ratio	83	101
WW/Ratio	603	104
Dam's MPPA	101	

HB	GM	CED	BW	WW	YW	ADG	DMI	M	ME	HPG	CEM	ST	MARB	YG	CW	REA	FAT
167	48	12	-0.5	60	102	0.27	2.07	22	1	13	7	15	0.36	0.04	30	0.20	0.01
46%	49%	50%	74%	50%	31%	15%	96%	74%	51%	12%	40%	54%	57%	19%	19%	18%	17%



60

## MLK CRK LAKOTA 037

REG. # 4292499 IATTOO: 037 BTK BD: 2/14/20 100% 1A  
RED RMJ REDMAN 1T  
**RED MINBURN COPENHAGEN 3Y**  
MINBURN MAY 112M

RIDGE ADMIRAL 3411  
**MLK CRK LAKOTA 550**  
MLK CRK LAKOTA 282

5L NORSEMAN KING 2291  
CROWFOOT KURUBA 4033P  
CRESCENT CREEK MAIN EVENT 6H  
MINBURN MAY 90G  
5L LEGEND 1553-425V  
RIDGE GRANDIOSE 629-1112  
HOLDEN LJ JULIAN 924  
MLK CRK LAKOTA 555

BW/Ratio	102	123
WW/Ratio	628	108
Dam's MPPA	100	

HB	GM	CED	BW	WW	YW	ADG	DMI	M	ME	HPG	CEM	ST	MARB	YG	CW	REA	FAT
166	47	9	1.4	62	97	0.22	1.29	22	-9	16	4	16	0.23	0.10	18	0.11	0.04
49%	59%	90%	95%	41%	42%	44%	40%	70%	5%	2%	95%	47%	88%	51%	61%	33%	82%

This Copenhagen X Admiral combination left us with a female that has both spring and depth of rib in an attractive package. With a 108 weaning ratio she is off to a good start of adding performance to her tool box.



Lot 61



61

## MLK CRK LANA 034

REG. # 4292807 IATTOO: 034 BTK BD: 2/14/20 100% 1A  
5L BOURNE 117-48A  
**5L VIGILANTE 2674-11D**  
5L OPAL 930-2674

5L ADVANTAGE 3267-221Y  
**MLK CRK LANA 809**  
MLK CRK LANA 2281

5L ADVANTAGE 3267-221Y  
5L ROXIE 854-117  
5L DEFENDER 560-30Z  
5L OPAL 2218-930  
BUF CRK THE RIGHT KIND U199  
5L ADINA 195-3267  
MLK CRK REDSTONE  
MLK CRK LANA 264

BW/Ratio	61	94
WW/Ratio	567	102
Dam's MPPA	101	

HB	GM	CED	BW	WW	YW	ADG	DMI	M	ME	HPG	CEM	ST	MARB	YG	CW	REA	FAT
191	47	14	-4.0	59	91	0.20	1.36	23	-5	15	6	18	0.48	0.13	16	-0.08	0.03
12%	54%	31%	13%	55%	58%	60%	47%	68%	18%	5%	65%	20%	29%	68%	72%	77%	66%

We really appreciate the Vigilante offspring especially out of our 1st calf heifers. Calving ease such as seen in lot 61 is part of the norm but there is a lot more to the package than just easy calving.



# Open Heifers



62

## MLK CRK SHEBA 084

REG. # 4292813 TATTOO: 084 BTK BD: 2/21/20 100% 1A

MUSHRUSH IMPRESSIVE CA U236  
MUSHRUSH IMPACT Z352  
MUSHRUSH ZENA JL X320

BUF CRK LANCER R017  
MUSHRUSH MADAM LT R265  
BECKTON JULIAN G1 J526  
MUSHRUSH ZENA EP U339

RIDGE LEGEND 2069  
MLK CRK SHEBA 841  
MLK CRK SHEBA 211

5L LEGEND 1553-425V  
RIDGE AQUILA 552-8066  
BECKTON EPIC R397 K  
MLK CRK SHEBA 731

BW/Ratio	70	107
WW/Ratio	569	102
Dam's MPPA	101	

HB	GM	CED	BW	WW	YW	ADG	DMI	M	ME	HPG	CEM	ST	MARB	YG	CW	REA	FAT
192	46	14	-3.5	56	90	0.21	1.34	26	2	11	8	19	0.30	0.15	15	0.05	0.05
11%	74%	23%	19%	65%	61%	54%	46%	34%	58%	47%	35%	10%	72%	78%	74%	46%	97%



Lot 63



63

## MLK CRK SHEBA 072

REG. # 4292343 TATTOO: 072 BTK BD: 2/19/20 100% 1A

5L LEGEND 1553-425V  
RIDGE LEGEND 2069  
RIDGE AQUILA 552-8066

5L LAKOTA LEGEND 7074  
5L HAZEL 45L-1553  
5L NORMANDY CANYON 6024  
RIDGE AQUILA 213-552

BECKTON EPIC R397 K  
MLK CRK SHEBA 211  
MLK CRK SHEBA 731

BECKTON EPIC K F075  
BECKTON KIT F468 JL  
MLK CRK TITLEIST 4158  
BJR SHEBA 4X-551

BW/Ratio	78	93
WW/Ratio	594	102
Dam's MPPA	104	

HB	GM	CED	BW	WW	YW	ADG	DMI	M	ME	HPG	CEM	ST	MARB	YG	CW	REA	FAT
180	44	15	-2.7	47	77	0.19	1.14	26	1	7	8	19	0.14	0.14	10	-0.17	0.03
25%	94%	21%	31%	90%	84%	70%	28%	31%	53%	96%	24%	10%	97%	76%	87%	90%	71%

Our Legend 2069 daughters are some of the nicest uddered females that we have. Add to that the phenotype, low birth weight and above average performance that lot 63 has to offer and you have development of a good cow.



64

## MLK CRK BONNEBELL 062

REG. # 4292553 TATTOO: 062 BTK BD: 2/17/20 100% 1A

RED U-2 RECKONING 149A  
RED U2 MONEY TALKS 530F  
RED U-2 MS DYNAMO 233B

RED U-2 RECON 192Y  
RED U-2 ANEXA 271Y  
RED MINBURN COPENHAGEN 3Y  
RED U-2 MS DYNAMO 234Z

MLK CRK ADVOCATE 4304  
MLK CRK BONNEBELL 612  
MLK CRK BONNEBELL 001

5L SECRET AGENT 117-229Z  
MLK CRK SHEBA 1014  
5L GRAND EXPRESS 453-5655  
MLK CRK BONNEBELL 415

BW/Ratio	85	104
WW/Ratio	612	105
Dam's MPPA	104	

HB	GM	CED	BW	WW	YW	ADG	DMI	M	ME	HPG	CEM	ST	MARB	YG	CW	REA	FAT
192	47	9	-1.2	60	91	0.19	1.48	23	-9	15	6	19	0.41	0.09	17	0.16	0.04
11%	69%	90%	61%	47%	58%	69%	59%	64%	5%	5%	76%	7%	44%	46%	67%	23%	91%



65

## MLK CRK LAKOTA 097

REG. # 4292741 TATTOO: 097 BTK BD: 2/26/20 100% 1A

5L ADVANTAGE 3267-221Y  
RIDGE PROVISION 6013  
RIDGE MONA 8162-2057

BUF CRK THE RIGHT KIND U199  
5L ADINA 195-3267  
5L ZENITH 1425-5767  
RIDGE MONA 620-8162

MLK CRK ADVOCATE 4304  
MLK CRK LAKOTA 741  
MLK CRK LAKOTA 586

5L SECRET AGENT 117-229Z  
MLK CRK SHEBA 1014  
RIDGE ADMIRAL 3411  
MLK CRK LAKOTA 288

BW/Ratio	79	99
WW/Ratio	585	101
Dam's MPPA	103	

HB	GM	CED	BW	WW	YW	ADG	DMI	M	ME	HPG	CEM	ST	MARB	YG	CW	REA	FAT
185	47	10	-2.1	59	90	0.19	1.31	25	-5	17	3	18	0.49	0.10	9	-0.04	0.04
18%	55%	86%	42%	51%	61%	70%	43%	46%	17%	1%	96%	15%	28%	51%	90%	69%	79%





# Open Heifers



66

## MLK CRK LAKOTA 0132

REG. # 4292615 TATTOO: 0132 BTK BD: 3/11/20 100% 1A

5L ADVANTAGE 3267-221Y  
HRR ADVANTAGE 6120  
HRR BANA 309

BUF CRK THE RIGHT KIND U199  
5L ADINA 195-3267  
MLK CRK EXPRESS 9127  
HRR BANA 193

BUF CRK CARRY OUT X102  
MLK CRK LAKOTA 6132  
MLK CRK LAKOTA 929

BUF CRK JULIAN R034  
BUF CRK CARRIE 3670  
TR JULIAN LT142  
MLK CRK LAKOTA 621

BW/Ratio	91	111
WW/Ratio	580	100
Dam's MPPA	100	

HB	GM	CED	BW	WW	YW	ADG	DMI	M	ME	HPG	CEM	ST	MARB	YG	CW	REA	FAT
171	46	11	-2.1	51	77	0.16	0.80	25	-3	13	6	17	0.30	0.07	10	-0.06	0.02
39%	77%	65%	42%	80%	85%	86%	12%	46%	25%	21%	67%	31%	72%	34%	88%	72%	38%

Our 6120 progeny are easy to pick out as they have a darker tone in their color pattern. They are also carry a deeper softer look as well.



67

## MLK CRK SHEBA 092

REG. # 4292799 TATTOO: 097 BTK BD: 2/24/20 100% 1A

MUSHRUSH IMPRESSIVE CA U236  
MUSHRUSH IMPACT Z352  
MUSHRUSH ZENA JL X320

BUF CRK LANCER R017  
MUSHRUSH MADAM LT R265  
BECKTON JULIAN G1 J526  
MUSHRUSH ZENA EP U339

RIDGE ADMIRAL 3411  
MLK CRK SHEBA 857  
MLK CRK SHEBA 107

5L LEGEND 1553-425V  
RIDGE GRANDIOSE 629-1112  
TR JULIAN LT142  
MLK CRK SHEBA 900

BW/Ratio	78	118
WW/Ratio	639	115
Dam's MPPA	106	

HB	GM	CED	BW	WW	YW	ADG	DMI	M	ME	HPG	CEM	ST	MARB	YG	CW	REA	FAT
215	48	16	-3.5	63	99	0.22	1.29	27	0	17	8	19	0.45	0.12	28	0.35	0.06
1%	35%	12%	19%	34%	39%	46%	40%	25%	42%	1%	22%	9%	35%	64%	24%	5%	99%

This heifer calf out of a 2-year-old cow should move on to be a good female with 9 EPDs in the top 25% plus #1 out of 36 heifer calves in her contemporary group. We hope she continues what she already has going. Her grandmother sells as Lot 20.



Lot 68



68

## MLK CRK THUNDER 081

REG. # 4292933 TATTOO: 081 BTK BD: 2/20/20 100% 1A

5L BOURNE 117-48A  
5L VIGILANTE 2674-11D  
5L OPAL 930-2674

5L ADVANTAGE 3267-221Y  
5L ROXIE 854-117  
5L DEFENDER 560-30Z  
5L OPAL 2218-930

5L ADVANTAGE 3267-221Y  
MLK CRK THUNDER 8407  
HRR THUNDER 751

BUF CRK THE RIGHT KIND U199  
5L ADINA 195-3267  
SHOCO DATA  
HRR HITHUNDER 444

BW/Ratio	77	118
WW/Ratio	568	102
Dam's MPPA	101	

HB	GM	CED	BW	WW	YW	ADG	DMI	M	ME	HPG	CEM	ST	MARB	YG	CW	REA	FAT
187	48	10	-1.0	65	98	0.21	1.49	21	-3	14	6	18	0.50	0.12	15	-0.04	0.03
16%	45%	83%	65%	29%	40%	55%	60%	80%	23%	6%	76%	17%	26%	64%	75%	69%	75%

When you look at Lot 81's pedigree from a cow view point it has some well known family names such as Roxie, Opal, Adina, and Thunder. Stacking these pedigrees together should make for functional, productive females with longevity.



Lot 69



69

## MLK CRK LANA 0118

REG. # 4292555 TATTOO: 0118 BTK BD: 3/7/20 100% 1A

5L ADVANTAGE 3267-221Y  
HRR ADVANTAGE 6120  
HRR BANA 309

BUF CRK THE RIGHT KIND U199  
5L ADINA 195-3267  
MLK CRK EXPRESS 9127  
HRR BANA 193

MLK CRK ADVOCATE 4304  
MLK CRK LANA 688  
MLK CRK LANA 044

5L SECRET AGENT 117-229Z  
MLK CRK SHEBA 1014  
MLK CRK EPIC 8171  
MLK CRK LANA 760

BW/Ratio	73	90
WW/Ratio	592	102
Dam's MPPA	100	

HB	GM	CED	BW	WW	YW	ADG	DMI	M	ME	HPG	CEM	ST	MARB	YG	CW	REA	FAT
201	46	14	-4.1	58	85	0.17	1.26	22	-4	16	8	19	0.48	0.12	15	-0.06	0.03
5%	71%	33%	12%	58%	72%	82%	38%	71%	20%	2%	32%	10%	29%	61%	75%	72%	63%

Quiet disposition and easy to be around is lot 69's motto. Combining 6120 with 4304 seems to work well.



# Open Heifers



**70**

## MLK CRK LAKOTA 0155

REG. # 4292745

TATTOO: 0155 BTK BD: 3/27/20 100% 1A

5L ADVANTAGE 3267-221Y  
RIDGE PROVISION 6013  
RIDGE MONA 8162-2057

[BUF CRK THE RIGHT KIND U199  
5L ADINA 195-3267  
5L ZENITH 1425-5767  
RIDGE MONA 620-8162

MLK CRK ADVOCATE 4304  
MLK CRK LAKOTA 7271  
MLK CRK LAKOTA 531

[5L SECRET AGENT 117-229Z  
MLK CRK SHEBA 1014  
[ANDRAS FUSION R236  
MLK CRK LAKOTA 343

BW/Ratio	84	104
WW/Ratio	589	101
Dam's MPPA	101	

HB	GM	CED	BW	WW	YW	ADG	DMI	M	ME	HPG	CEM	ST	MARB	YG	CW	REA	FAT
146	49	6	-1.0	62	96	0.21	1.26	24	-6	15	0	15	0.50	0.10	10	-0.10	0.03
79%	34%	99%	65%	38%	45%	54%	38%	54%	14%	3%	99%	62%	26%	54%	88%	80%	58%



Lot 71



**71**

## MLK CRK SHEBA 044

REG. # 4292475

TATTOO: 044 BTK BD: 2/15/20 100% 1A

5L LEGEND 1553-425V  
RIDGE ADMIRAL 3411  
RIDGE GRANDIOSE 629-1112

[5L LAKOTA LEGEND 7074  
5L HAZEL 45L-1553  
MLK CRK EXPRESS 9127  
RIDGE GRANDIOSE 435-629

BUF CRK JUST RIGHT X116  
MLK CRK SHEBA 484  
MLK CRK SHEBA 935

[BUF CRK MEDALLION N328  
BUF CRK AMBER R087  
RED CROWFOOT OLE'S OSCAR  
MLK CRK SHEBA 447

BW/Ratio	68	81
WW/Ratio	584	101
Dam's MPPA	99	

HB	GM	CED	BW	WW	YW	ADG	DMI	M	ME	HPG	CEM	ST	MARB	YG	CW	REA	FAT
214	46	18	-6.8	41	70	0.18	1.26	26	0	20	10	19	0.55	0.17	12	-0.03	0.06
2%	80%	2%	1%	96%	92%	75%	38%	38%	40%	1%	7%	9%	18%	87%	83%	65%	98%

Lot 71 offers a good balance of length and depth in her makeup. She also ranks in the top 2% of the breed for the HerdBuilder index.



Lot 72



**72**

## MLK CRK EMUMAR 0150

REG. # 4292805

TATTOO: 0150 BTK BD: 3/22/20 100% 1A

5L HOT SHOT 2370-186A  
5L FAST BREAK 117-324E  
5L ROXIE 854-117

[5L BLAZIN KIND 189-228Y  
5L MARTHA 425-2370  
5L SIGNATURE 5615  
LXXX ROXIE 854 MR

RIDGE PROVISION 6013  
MLK CRK EMUMAR 8104  
MLK CRK EMUMAR 232

[5L ADVANTAGE 3267-221Y  
RIDGE MONA 8162-2057  
MUSHRUSH IMPRESSIVE CA U236  
MLK CRK EMUMAR 024

BW/Ratio	55	86
WW/Ratio	618	111
Dam's MPPA	104	

HB	GM	CED	BW	WW	YW	ADG	DMI	M	ME	HPG	CEM	ST	MARB	YG	CW	REA	FAT
183	45	16	-4.4	53	79	0.16	1.41	29	0	13	7	18	0.35	0.06	8	0.14	0.04
20%	90%	9%	9%	74%	82%	87%	53%	12%	42%	17%	44%	19%	59%	28%	92%	27%	91%

This Fast Break heifer calf offers low birth while performing 11% above the average of her contemporaries. Her pedigree lends itself to a lot of mating options while keeping the right type of profitable cow in the herd.





# Open Heifers



73

REG. # 4292889

## MLK CRK BONNEBELL 0142

TATTOO: 0142 BTK BD: 3/15/20 100% 1A

5L HOT SHOT 2370-186A  
5L FAST BREAK 117-324E  
5L ROXIE 854-117

5L BLAZIN KIND 189-228Y  
5L MARTHA 425-2370  
5L SIGNATURE 5615  
XXX ROXIE 854 MR

5L FIRECRACKER 560-117A  
MLK CRK BONNEBELL 822  
MLK CRK BONNEBELL 612

BUF CRK THE RIGHT KIND U199  
5L BLACK ADINA 525-560  
MLK CRK ADVOCATE 4304  
MLK CRK BONNEBELL 001

BW/Ratio	59	91
WW/Ratio	560	101
Dam's MPPA	100	

HB	GM	CED	BW	WW	YW	ADG	DMI	M	ME	HPG	CEM	ST	MARB	YG	CW	REA	FAT
183	47	15	-3.9	55	78	0.14	1.36	24	-3	16	7	17	0.64	0.04	8	0.24	0.05
21%	68%	15%	14%	68%	83%	92%	47%	57%	25%	2%	56%	34%	8%	19%	91%	13%	94%

## PROFIT. REPEAT.

**Generate repeated profits with the industry's most-favored female.**

Independent research from a decade of data collection showed Red Angus-sired heifers commanded \$66/head more than females of other breed types. That's nearly \$5,300 on a single load of replacement heifers to boost profits on your operation.

Visit [RedAngus.org](http://RedAngus.org) for details on the industry's most-favored female.

**RED ANGUS**  
RANCH TESTED. RANCHER TRUSTED.



# Commercial Heifers



These commercial lots will be located at the commercial breeders' locations until delivery is arranged within two weeks after this sale. Delivery will be F.O.B. the consigner's ranch load out area. Any interested buyers who want to view the cattle can contact the consigner or Milk Creek Reds to arrange for a tour of the cattle.



## 74

### 40 HEAD BRED HEIFERS

CONSIGNOR: **LANA HOFF • RYAN BANKS, MANAGER, 406-596-0200**  
**FORSYTH, MONTANA • 406-356-7576**

Lana is offering her home raised, one iron, solid red bull bred heifers that will calve beginning the 1st of April for 30 days. Lana used Milk Creek calving ease heifer bulls for cleanup on these heifers. These heifers along with all of Hoff's cows are run on short hard grass country north of Forsyth Montana where they have to earn their keep. The cattle are gentle and have been handled on foot as well as horseback with dogs. Heifers have been vaccinated with PregGuard 10 FP in the spring and boosted with Novartis Virashield 6 VL 5 at ultrasound time. Heifers were ultrasound pregnancy tested by Fallon County Vet Clinic on September 14th. The heifers will be poured with Dectomax at the end of October. There are 30 head of heifers that are 2nd cycle due from the 1st of April to the 20th of April and 10 head of 3rd cycle heifers due the last 10 days of April.

These heifers will be offered in groups of 10 gate cut or the top bidder can take as many groups as he/she wants. The delivery will be FOB the ranch at Forsyth Montana the week of November 16th.

#### Lot 74A

10 head gate cut, due April 1 – April 20

#### Lot 74B

10 head gate cut, due April 1 – April 20

#### Lot 74C

10 head gate cut, due April 1 – April 20

#### Lot 74D

10 head of 3rd cycle heifers due the last 10 days of April



## 75

### 60 HEAD OF BRED HEIFERS

CONSIGNOR: **TIM AND TORI DWYER • 406-480-0931**  
**SIDNEY, MONTANA**

Tim and Tori are offering two groups of home raised bull bred Red Angus heifers along with a group of coming three year old Red Angus cows. Tim has always purchased bulls at the top end of the sales that he attends leaving him with as good as commercial cow herd as you can find. All of the bred females have had calf-hood vaccinations followed by PregGuard 10 FP in the spring as yearlings and then Virashield in the fall. The females will be poured at ultrasound time with Ivermectin and have also had their first round of Scourguard shots. They will be ultrasound pregnancy tested by Wibaux Vet Clinic. The offering includes 30 head of bull bred heifers bred to calving ease Red Angus bulls due to calve from April 20th to May 10th and 30 head of bull bred heifers due to calve May 10th to the end of May. The second group of heifers will have a few heifers bred to the neighbors Charolaise bull due to cattle getting through a fence into the wrong pasture. They will calve from May 10th to the end of May. The coming three year olds will include 30 and maybe more by sale time depending on pregnancy testing which won't be done until the middle of October. These young females will be bred to sons of our Ridge Admiral bull that we have used for the past 6 years. The bulls were turned out June 27th and pulled September 1 to provide calving dates from April 7th to the end of May. These dates will be more defined after the cows are ultra-sounded. These females will be offered in groups of 10 gate cut with the high bidder being able to roll additional groups together.

#### Lot 75 A-F – Bull-bred Commercial Heifers

##### Lot 75A

10 head due April 20 – May 10

##### Lot 75B

10 head due April 20 – May 10

##### Lot 75C

10 head due April 20 – May 10

##### Lot 75D

10 head due May 10 – May 30

##### Lot 75E

10 head due May 10 – May 30

##### Lot 75F

10 head due May 10 – May 30

#### Lot 76 A-C – Coming 3-year-old Red Angus Commercial Cows

##### Lot 76A

10 head due April 7 – May 30

##### Lot 76B

10 head due April 7 – May 30

##### Lot 76C

10 head due April 7 – May 30





**77**

## 62 COMMERCIAL BRED HEIFERS

CONSIGNOR: MILK CREEK REDS

We are offering a combination of our home-raised commercial heifers along with some heifers that we purchased from my uncle Donald Mackay who has bought his bulls from us from the very beginning of our registered business. These heifers were wintered right alongside our registered heifers and then summered and AI'd on some lease pasture north of Marmath, ND. The heifers were given PregGuard 10 FP in the spring and Dectomax in the fall. The heifers were AI'd to 5L Leading Edge on the 15th of June and cleaned up with 5L Craftsman 4937-530G and MLK CRK Fastbreak 9337 which were selected for their calving ease.

# Commercial Heifers

**Lot 77 A-D**

**Selling in groups of 10 head, gate cut, with the option of rolling as many groups together as the high bidder wants.**

**Lot 77A**

10 head of time bred A.I.'d heifers bred to 5L Leading Edge and ultra-sounded due to calf March 24.

**Lot 7B**

10 head of time bred A.I.'d heifers bred to 5L Leading Edge and ultra-sounded due to calf March 24.

**Lot 77C**

10 head of time bred A.I.'d heifers bred to 5L Leading Edge and ultra-sounded due to calf March 24.

**Lot 77D**

10 head of time bred A.I.'d heifers bred to 5L Leading Edge and ultra-sounded due to calf March 24.

**Lot 77E**

12 head of bull bred heifers ultra-sounded due to calve April 11 – April 15.

**Lot 77F**

10 head of bull bred heifers ultra-sounded due to calve April 15 – May 3.





Bruce & Tena Ketchum  
1721 Plevna Road  
Plevna, MT 59344  
(406) 778-3819  
ketchum@midrivers.com

PRESORTED  
FIRST CLASS  
US POSTAGE PAID  
UNITED PRINTNG



**Female Sale**  
**Friday, November 6, 2020**

Catalog & video available online  
[www.milkcreekreds.com](http://www.milkcreekreds.com)

**DVAuction** Broadcasting  
Real-time Auctions