

300 HEAD WILL SELL!

Big FEMALE SALE



PRICKLY PEAR

Simmental Ranch

WEDNESDAY, NOVEMBER 13TH AT 1:00 PM MST • HELENA, MONTANA

WELCOME TO OUR SALE!

Dear Cattleman:

After 18 years, we have come to the point where we can add a fall female sale every other year. I have hand selected some feature cow families to offer in addition to a very nice set of bred heifers. We started to purchase a few commercial heifer calves from customers that do not retain females. Through these efforts we have selected a nice group of replacement heifers to AI and sell to you this fall.

To touch on the feature lots... The 700E cow has sifted her way to the top. It doesn't matter what she's bred to, her calf is always outstanding. She has 6 calves ratioed 105 at weaning. The 900G is an exceptional young cow that has produced above average since she was a 2 year old. She has 4 calves ratioed 104 at weaning. We are retaining the right to flush any of the feature lots at a future date. It would be at the convenience of the buyer and the cost to Prickly Pear at up to 10 embryos.

The offered 2 year olds are females that mostly had heifer calves along with a few select that raised a top bull for the sale.

Hope to see everyone at the sale.

Sincerely,
Troy Wheeler, Cattle Manager

Welcome!

It is with immense pleasure to invite you to PPSR Big Female Sale. Troy and his team opened the gates wide on this offering which allows you their valued customers the opportunity to add fresh young genetics to your operation. Anyone in production agriculture knows the dedication it takes to have a successful operation, and this firm is determined for you to have success and make your program profitable.

As you view the catalog, you will find two top proven donors are in the offering. 700E & 900G are two that just don't miss regardless of which sires are used, their track record is impeccable. The 3 yr olds that are available right out of the heart of the herd. The PPSR team really stepped up to the plate on this group as well as the bred heifers. Hard working ladies with many years of proven time-tested genetics to make progress for your breeding program.

As we all know, the national cowherd is at an unprecedented small number and replacements going into the feedlots are high, so this is the time to set your satchel down and put yourself in the driver's seat of the beef business. There is also an excellent set of over 100 commercial females packing PPSR genetics so study your lesson and feel free to call Troy and his team about them.

November 13th will be the day for your opportunity to add genetics value to your program. If you are unable to join us at the ranch, jump on liveauction.tv to bid. PPSR and Eberspacher Ent will assist with trucking arrangements for expedite shipping in a timely manner. Looking forward to seeing you at the ranch!

Sincerely
Val Eberspacher
Eberspacher Ent Inc

New
**SALE
DATE!**

Cattle Viewing Day

Tuesday, November 12th – All Day

Sale Day Schedule

Wednesday, November 13th

- Cattle viewing 8:00 am to 12:00 Noon
- Lunch 12:00
- **PPSR Female Sale 1:00 pm MST**

LiveAuctions.TV

Online Bidding at LiveAuctions.TV
Technical Support 682-816-4900

Big FEMALE SALE

HOTEL:

Hampton Inn, 725 Carter Dr. Helena, MT 59601 • 406-443-5800

SALE DAY LOCATION :

PRICKLY PEAR SIMMENTAL RANCH SALE BARN
2853 Canyon Ferry Road, Helena, MT

DIRECTIONS: FROM I-15 - Take Custer Avenue Exit (#194). Head east for 3.1 miles. At the one mile mark it will reduce to a single lane and turn into Canyon Ferry Road. The sale facility will be just after a gravel pit pond on your right.

FROM THE EAST ON US 12 - At the west end of East Helena turn right (N) by the Exxon Gas Station (first turn after the two stoplights) go north approximately two miles to a stoplight. Turn left (W) onto Canyon Ferry Road. Go about 3/8 of a mile, our sale facility is on the left.

FROM THE WEST ON US 12 - Turn left (N) at 3rd light (Henderson Street). Turn right (E) at stop sign in front of fairgrounds (Custer). Continue east until you cross over I-15 and then use the directions from I-15 above.

SIGHT UNSEEN PURCHASE: We guarantee all sight unseen purchases. Call ahead of time and we will go over the offering. You can leave a bid with us or a representative, or you may bid via the phone or on the Internet during the sale. You will be treated as though you are here at the sale. Please call us if you need additional information.

TERMS & CONDITIONS: All cattle sell under the terms & conditions of the American Simmental Association: Terms available sale day and ASA web site. Checks payable to Prickly Pear Simmental Ranch.

EPDs: EPDs listed are BOLT 10-16-24. Please note EPDs may change from the time sale catalog is printed until registration papers are transferred.

UPDATES & SALE ORDER: Additional information & sale order can be found on the Eberspacher Enterprises Inc. Facebook page. Like us and receive all sale updates automatically or download the EE phone app.

ANNOUNCEMENTS: Announcements made sale day and from auction block during the sale take precedence over printed material associated with this sale. Anyone attending this sale attends at their own risk. Breeders or any of the sales force will not be held responsible for any personal injury for attending this sale.

LIVESTOCK INSURANCE: Available sale day through sale management.

300 HEAD WILL SELL!



SALE DAY PHONES

- Troy Wheeler 406-949-1754
- Gary Burnham 406-439-2360
- Val Eberspacher 612-805-7405
- Roger Jacobs, Auctioneer 406-698-7686

MARKETING REPRESENTATIVES

- John Goggins, Western Ag Reporter 406-698-4159
- Barry Ellis, Special Assignment 406-855-4183
- Amanda Hilbrands, LiveAuctions.TV 507-828-7089
- Jeff Thomas, Lee Agri Media 406-581-8859

Eberspacher
ENTERPRISES INC.

PROFESSIONAL SALE MANAGEMENT
WWW.EBERSALE.COM
507-532-6694 • Val Cell 612-805-7405
sales@ebersale.com
2904 Co Rd 6, Marshall, MN 56258



LOT 1

1

MISS PRICKLY PEAR 700E

Black Homo Polled 1/2 SM 1/2 AN Cow | Tattoo: 700E

ASA# 3300576

BIRTHDATE: 1/22/17

CE	BW	WW	YW	ADG	MCE	MILK	MWW	STAY	DOC	CW	YG	MARB	BF	REA	API	TI
16	-2.3	71	114	.27	7	31	67	16	15.3	44.1	.01	.32	.003	.43	139	79

This future donor cow has done it all. She features as dam or grandam to four of the lots in the sale. Posts a weaning ratio of 105 on 6 calves.

Retaining the right of 1 flush at a later date.

Adj BW	79
Adj WW	598
Adj YW	N/A

CONNEALY CONSENSUS 7229
CONNEALY COMRADE 1385
 HAPPY GEE OF CONANGA 919
 TJ EASY MONEY 101W
MISS PRICKLY PEAR B442
 MISS PRICKLY PEARY117

AI Sire: CDI Major Impact 280H | Date: 5/24/24 | Due Date: 3/3/25
 Est Plan Mating EPDs: 13 0.5 83 127 0.28 6 26 68 16 14.4
 Carcass: 46.2 -0.24 0.18 -0.03 0.99 131 81



LOT 1A



CDI Major Impact, AI Sire

LOT 1A: MISS PRICKLY PEAR 403M

ASA#4422606 Black Homo Polled 1/2 SM 1/2 AN Cow
 BD: 2/9/24 Tattoo: 403M Adj BW: 59 Adj WW: 590
Sired by: M4 Predictable 956G
 EPDs: 18 -2.9 72 114 0.26 7 31 68 17 12.8
 Carcass: 46.3 -0.07 0.48 -0.014 0.61 154 84

403M ranks in the top 10% for calving ease and birth weight.



LOT 2A

2

MISS PRICKLY PEAR 202K

Black Homo Polled 3/4 SM 1/4 AN Cow | Tattoo: 202K

Adj BW	78
Adj WW	632
Adj YW	N/A

ASA# 4126481 | BIRTHDATE: 2/18/22
 CDI MAINLINE 265D
HOOK'S FRONTLINE 40F
 HOOK'S CARINA 15C
 CONNEALY COMRADE 1385
MISS PRICKLY PEAR 700E
 MISS PRICKLY PEAR B442

CE	BW	WW	YW	ADG	MCE	MILK	MWW	STAY	DOC	CW	YG	MARB	BF	REA	API	TI
15	-1.9	69	111	.26	8	32	67	20	14.7	31.5	-.16	.50	-.022	.60	155	83

This 2 year daughter of the 700E cow ranks in the top 5% of the breed for Milk.

AI Sire: NLC Break Free 72W | Date: 5/19/24 | Due Date: 2/26/25

Est Plan Mating EPDs: 14 .1 77 126 .30 8 24 63 18 12.5

Carcass: 34.4 -.31 .34 -.05 .88 151 84



LOT 2

LOT 2A: MISS PRICKLY PEAR 402M

ASA#4422542 Black Homo Polled 5/8 SM 3/8 AN Cow Tattoo: 402M

BD: 2/9/24 Adj BW: 91 Adj WW: 616 **Sired by: TJ Arrowhead 263G**

EPDs: 16 -2.5 79 121 0.26 10 34 72 16 14.5

Carcass: 35.2 -0.17 0.52 -0.036 0.61 156 90

402M ranks in the top 15% of the breed for Calving Ease, Birth Weight and Maternal Calving Ease.

3

MISS PRICKLY PEAR 365L

Black Homo Polled 3/4 SM 1/4 AN Cow | Tattoo: 365L

Adj BW	99
Adj WW	739
Adj YW	840

ASA# 4288758 | BIRTHDATE: 3/3/23
 LCDR IMPACT 134F
CDI MAJOR IMPACT 280H
 CDI MISS RIMROCK 55E
 CONNEALY COMRADE 1385
MISS PRICKLY PEAR 700E
 MISS PRICKLY PEAR B442

CE	BW	WW	YW	ADG	MCE	MILK	MWW	STAY	DOC	CW	YG	MARB	BF	REA	API	TI
11	2.0	91	136	.28	5	26	72	16	14.4	48.5	-.24	.17	-.030	1.03	124	82

This is a hard heifer to part with ranking 2 out of 110 and ratioing 117 at weaning.

Her dam is one of the best cows to ever walk the ranch.

Retaining the right to one flush at a later date.

AI Sire: KBHR Bold Ruler H152 | Date: 5/14/24 | Due Date: 2/21/25

Est Plan Mating EPDs: 14 -.5 87 136 .31 9 25 69 17 16.8

Carcass: 43.0 -.21 .50 -.04 .79 162 94



LOT 3



LOT 4

4

MISS PRICKLY PEAR 900G

Homo Black Homo Polled 1/4 SM 3/4 AN Cow | Tattoo: 900G

Adj BW	79
Adj WW	559
Adj YW	N/A

ASA# 3645548 | BIRTHDATE: 2/6/19

S CHISUM 6175

CIRCLE L GUS

CIRCLE L PRIDE X097

CONNELLY BLACK GRANITE

MISS PRICKLY PEAR 709E

MISS PRICKLY PEAR 523C

CE	BW	WW	YW	ADG	MCE	MILK	MWW	STAY	DOC	CW	YG	MARB	BF	REA	API	TI
15	-2.4	75	108	.20	10	27	65	9	12.3	58.2	.09	.30	.020	.52	118	78

900G is a feature for the sale. She posts a weaning ratio of 104 on 4 calves with a calving interval of 369 days. Her heifer calf that sells ratioed 109 at weaning.

AI Sire: RBS Harvest Moon L331 | Date: 5/24/24 | Due Date: 3/3/25

Est Plan Mating EPDs: 15 -9 85 123 .24 9 25 67 11 11.3

Carcass: 36.3 -.24 .22 -.04 .80 126 83



LOT 4A

LOT 4A: MISS PRICKLY PEAR 447M

ASA#4422384 Homo Black Homo Polled 5/8 SM 3/8 AN Cow Tattoo: 447M

BD: 2/24/24 Adj BW: 82 Adj WW: 633 Sired by: **Schooley Standout 27G**

EPDs: 14 -1.4 77 107 0.19 9 20 57 13 15.9

Carcass: 36.7 -0.04 0.38 -0.011 0.41 132 81

447M dam has ratioed 104 on 4 calves with a 369 day calving interval.



LOT 5

5

MISS PRICKLY PEAR 328L

Homo Black Homo Polled 5/8 SM 3/8 AN Cow | Tattoo: 328L

Adj BW	74
Adj WW	620
Adj YW	773

ASA# 4288582 | BIRTHDATE: 2/23/23

OMF EPIC E27

SCHOOLEY STANDOUT 27G

CLRS BEAUTY QUEEN 420 B

CIRCLE L GUS

MISS PRICKLY PEAR 900G

MISS PRICKLY PEAR 709E

CE	BW	WW	YW	ADG	MCE	MILK	MWW	STAY	DOC	CW	YG	MARB	BF	REA	API	TI
16	-2.9	70	99	.18	10	22	57	13	16.1	37.4	-.04	.38	-.011	.41	134	79

328L ranks in the top 10% of the breed for Birth Weight and top 15% of the breed for Maternal Calving Ease.

AI Sire: KBHR Bold Ruler H152 | Date: 5/15/24 | Due Date: 2/22/25

Est Plan Mating EPDs: 17 -2.9 76 117 .26 11 23 61 15 17.7

Carcass: 37.5 -.11 .60 -.03 .48 165 92

BRED FEMALES & CALVES



6

MISS PRICKLY PEAR 014H

Homo Black Homo Polled 3/4 SM 1/4 AN Cow | Tattoo: 014H

Adj BW	81
Adj WW	616
Adj YW	N/A

ASA# 3808928 | BIRTHDATE: 2/22/20

BDV TRUE GRIT 11X
BBS TRUE JUSTICE B10
 BBS MISS JUSTICE Z7
 HOOK'S BLACK HAWK 50B
MISS PRICKLY PEAR 740E
 MISS PRICKLY PEAR 7004T

CE	BW	WW	YW	ADG	MCE	MILK	MWW	STAY	DOC	CW	YG	MARB	BF	REA	API	TI
15	-1.5	80	114	.21	11	33	73	20	14.4	9.4	-.40	.15	-.061	.77	138	81

014H has ratioed 105 on her first 3 calves at weaning with a calving interval of 363 days.

AI Sire: Schooley Standout 27G | Date: 5/24/24 | Due Date: 3/3/25

Est Plan Mating EPDs: 14 -1.9 72 100 .17 9 25 61 18 16.9

Carcass: 12.3 -.29 .31 -.05 .53 150 83

LOT 6A: MISS PRICKLY PEAR 464M

ASA#4422520 Homo Black Homo Polled Purebred SM Cow Tattoo: 464M

BD: 2/26/24 Adj BW: 69 Adj WW: 577 Sired by: OMF Epic E27

EPDs: 16 -2.6 80 115 0.22 9 29 70 18 14.4

Carcass: 19.8 -0.33 0.18 -0.055 0.75 150 86

Ranks in the top 4% of the breed for Birth Weight.



LOT 6

7

MISS PRICKLY PEAR 032H

Black Polled Purebred SM Cow | Tattoo: 032H

Adj BW	83
Adj WW	647
Adj YW	N/A

ASA# 3808701 | BIRTHDATE: 2/26/20

HOOK'S YELLOWSTONE 97Y
KOCH BIG TIMBER 685D
 KOCH MS HOOKS BOY
 PPSR KING EASY 5Z
MISS PRICKLY PEAR F835
 MISS PRICKLY PEAR 944W

CE	BW	WW	YW	ADG	MCE	MILK	MWW	STAY	DOC	CW	YG	MARB	BF	REA	API	TI
11	.0	76	113	.23	7	27	65	17	9.6	29.1	-.19	.26	-.042	.51	140	82

032H has a Weaning Ratio of 106 at weaning on 3 calves with a calving interval of 361 days.

AI Sire: KBHR Bold Ruler H152 | Date: 5/24/24 | Due Date: 3/3/25

Est Plan Mating EPDs: 15 -1.5 79 125 .28 10 26 65 17 14.4

Carcass: 33.3 -.19 .54 -.05 .53 166 93

LOT 7A: MISS PRICKLY PEAR 437M

ASA#4422648 Black Polled Purebred SM Cow

BD: 2/20/24 Tattoo: 437M Adj BW: 79 Adj WW: 633

Sired by: Schooley Standout 27G

EPDs: 12 -0.9 76 108 0.20 7 20 57 17 14.5

Carcass: 22.1 -0.18 0.36 -0.042 0.40 147 84

437M ratioed 109 at weaning against 67 contemporaries.



LOT 7



LOT 7A

8

RKNWHRT BAROS 150J

Black Homo Polled 3/8 SM 5/8 AN Cow | Tattoo: 150J

Adj BW	83
Adj WW	637
Adj YW	N/A

ASA# 3957043 | BIRTHDATE: 2/26/21

HOOK'S BLACK HAWK 50B
HOOK'S EAGLE 6E
 HOOK'S CRYSTAL 1C
 R B TOUR OF DUTY 177
RKNWHRT BAROS 655D
 SD BAROS 554

CE	BW	WW	YW	ADG	MCE	MILK	MWW	STAY	DOC	CW	YG	MARB	BF	REA	API	TI
14	-1.4	84	135	.32	8	25	67	14	15.8	49.7	-.12	.52	-.002	.88	144	89

This 3 year old is a deep bodied Eagle daughter that has a well balanced set of EPDs.

AI Sire: CDI Major Impact 280H | Date: 5/24/24 | Due Date: 3/3/25

Est Plan Mating EPDs: 12 1.0 90 138 .30 7 23 68 15 14.7

Carcass: 49.0 -.31 .28 -.03 1.22 136 87



LOT 8



LOT 9

RBS Harvest Moon L331, AI Sire

9

MISS PRICKLY PEAR F810

Black Homo Polled Purebred SM Cow | Tattoo: F810

ASA# 3474863

BIRTHDATE: 3/24/18

CE	BW	WW	YW	ADG	MCE	MILK	MWW	STAY	DOC	CW	YG	MARB	BF	REA	API	TI
7	3.2	89	132	.27	4	27	71	19	7.7	44.3	-.36	.07	-.099	.80	131	81

F810 has a Weaning Ratio of 103 and a calving interval of 367 days. She ranks in the top 15% of the breed for Weaning Weight.

Adj BW	96
Adj WW	707
Adj YW	N/A

RC CLUB KING 040R
PPSR MONTANA KING 81Y
 MISS PRICKLY PEAR 352N
 MR ISHEE CATALYST
MISS PRICKLY PEAR 466B
 MISS PRICKLY PEAR 194Y

AI Sire: RBS Harvest Moon L331 | Date: 5/24/24 | Due Date: 3/3/25
 Est Plan Mating EPDs: 11 1.9 91 135 .27 6 25 70 16 9.0
 Carcass: 29.4 -.46 .10 -.10 .94 132 85



LOT 10

10

MISS PRICKLY PEAR 036H

Black Homo Polled 1/2 SM 1/2 AN Cow | Tattoo: 036H

Adj BW	74
Adj WW	627
Adj YW	N/A

ASA# 3808719 | BIRTHDATE: 2/26/20
 SUMMITCREST COMPLETE 1P55
KM BROKEN BOW 002
 SUMMITCREST PRINCESS 0P12
 PPSR MONTANA KING 81Y
MISS PRICKLY PEAR F810
 MISS PRICKLY PEAR 466B

CE	BW	WW	YW	ADG	MCE	MILK	MWW	STAY	DOC	CW	YG	MARB	BF	REA	API	TI
13	-.8	85	131	.29	9	27	70	15	1.5	47.3	-.17	.42	-.049	.65	142	88

036H has a Weaning Ratio of 107 on 3 calves with a calving interval of 363 days. Her heifer calf ratioed 112 at weaning with 67 contemporaries.

AI Sire: TJ Roosevelt 366E | Date: 5/24/24 | Due Date: 3/3/25
 Est Plan Mating EPDs: 10 1.6 87 134 .30 8 25 68 17 14.7
 Carcass: 34.5 -.26 .35 -.06 .70 142 87



TJ Roosevelt 366E, AI Sire



LOT 10A

LOT 10A: MISS PRICKLY PEAR 467M

ASA#4422637 Black Homo Polled 1/2 SM 1/2 AN Cow
 BD: 2/26/24 Tattoo: 467M Adj BW: 87 Adj WW: 652

Sired by: M4 Predictable 956G
 EPDs: 14 0.3 89 136 0.29 9 28 69 17 10.4
 Carcass: 47.9 -0.17 0.53 -0.040 0.72 152 91

467M ratioed 112 at weaning against 67 contemporaries.

BRED FEMALES & CALVES



11

MISS PRICKLY PEAR 255K

Black Homo Polled 1/2 SM 1/2 AN Cow | Tattoo: 255K

Adj BW	81
Adj WW	659
Adj YW	N/A

ASA# 4126415 | BIRTHDATE: 2/28/22

S A V BISMARCK 5682

S A V BRUISER 9164

S A V MISS BOBBIE 7463
PPSR MONTANA KING 81Y

MISS PRICKLY PEAR F810

MISS PRICKLY PEAR 466B

CE	BW	WW	YW	ADG	MCE	MILK	MWW	STAY	DOC	CW	YG	MARB	BF	REA	API	TI
12	.1	87	138	.32	8	24	68	14	9.8	44.5	-.17	.24	-.046	.61	128	84

This big volume Bruiser daughter ratioed 103 at weaning on her first calf.

AI Sire: KBHR Bold Ruler H152 | Date: 5/19/24 | Due Date: 2/26/25

Est Plan Mating EPDs: 15 -1.4 85 137 .33 10 24 67 16 14.5

Carcass: 41.0 -.18 .53 -.05 .58 161 94



LOT 11



KBHR Bold Ruler H152, AI Sire

FEMALES WITH HEIFER CALVES

12

MISS PRICKLY PEAR 243K

Homo Black Homo Polled 1/2 SM 1/2 AN Cow | Tattoo: 243K

Adj BW	83
Adj WW	619
Adj YW	N/A

ASA# 4126457 | BIRTHDATE: 2/28/22

WERNER FLAT TOP 4136

TJ FLAT IRON 259G

TJ 33Y
CONNEALY BLACK GRANITE

MISS PRICKLY PEAR 973G

MISS PRICKLY PEAR 598C

CE	BW	WW	YW	ADG	MCE	MILK	MWW	STAY	DOC	CW	YG	MARB	BF	REA	API	TI
13	.4	84	128	.28	7	29	71	17	-1.8	37.5	-.08	.42	-.023	.45	142	86

This easy keeping Flat Iron daughter ratioed 107 at weaning on her first calf.

AI Sire: TJ Roosevelt 366E | Date: 5/19/24 | Due Date: 2/26/25

Est Plan Mating EPDs: 10 2.2 87 133 .29 7 25 69 18 8.5

Carcass: 29.6 -.22 .35 -.04 .60 143 86



LOT 12



TJ Roosevelt 366E, AI Sire

LOT 12A: MISS PRICKLY PEAR 401M

ASA#4422507 Homo Black Homo Polled 3/4 SM 1/4 AN Cow

BD: 2/8/24 Tattoo: 401M Adj BW: 77 Adj WW: 670

Sired by: OMF Epic E27

EPDs: 14 -0.7 89 132 0.27 7 25 69 17 6.3

Carcass: 33.8 -0.17 0.32 -0.036 0.59 149 90

401M weaned off her 2 year dam at 670 pounds ratioing 107.





LOT 13

13

RKNWHRT MS FLAT IRON 256K

Homo Black Homo Polled 1/2 SM 1/2 AN Cow | Tattoo: 256K

Adj BW	71	ASA# 4068359 BIRTHDATE: 3/1/22
Adj WW	617	WERNER FLAT TOP 4136
Adj YW	N/A	TJ FLAT IRON 259G
		TJ 33Y
		BBS TRUE JUSTICE B10
		RKNWHRT MS JUSTICE 040H
		RKNWHRT COMRADE 701E

CE	BW	WW	YW	ADG	MCE	MILK	MWW	STAY	DOC	CW	YG	MARB	BF	REA	API	TI
16	-3.2	73	112	.25	8	30	67	18	-2	29.5	-.06	.59	-.007	.39	159	88

256K ranks in the top 10% of the breed for Calving Ease and top 15% for Calving Ease.

AI Sire: CDI Major Impact 280H | Date: 5/20/24 | Due Date: 2/27/25

Est Plan Mating EPDs: 13 .1 84 126 .27 7 26 68 17 6.7

Carcass: 38.9 -.28 .31 -.03 .97 144 86

LOT 13A: RKNWHRT MS. EPIC 440M

ASA#4423529 Homo Black Homo Polled 3/4 SM 1/4 AN Cow Tattoo: 440M

BD: 2/21/24 Adj BW: 65 Adj WW: 545 **Sired by: OMF Epic E27**

EPDs: 17 -3.7 70 105 0.22 8 29 67 17 7.1

Carcass: 29.8 -0.16 0.40 -0.028 0.56 156 85

This Epic daughter ranks in the top 10% of the breed for Calving Ease and Birth Weight.



LOT 14

14

MISS PRICKLY PEAR 227K

Black Polled 5/8 SM 3/8 AN Cow | Tattoo: 227K

Adj BW	83	ASA# 4126451 BIRTHDATE: 2/26/22
Adj WW	637	HOOK'S BLACK HAWK 50B
Adj YW	N/A	HOOK'S EAGLE 6E
		HOOK'S CRYSTAL 1C
		LD CAPITALIST 316
		MISS PRICKLY PEAR 062H
		MISS PRICKLY PEAR 425B

CE	BW	WW	YW	ADG	MCE	MILK	MWW	STAY	DOC	CW	YG	MARB	BF	REA	API	TI
13	-9	89	139	.31	6	22	67	16	16.9	44.1	-.29	.38	-.034	1.08	144	90

227K ranks in the top 15% breed for Weaning Weight and Yearling Weight. Has a really nice Progressive heifer calf in the sale.

AI Sire: Schooley Standout 27G | Date: 5/18/24 | Due Date: 2/25/25

Est Plan Mating EPDs: 14 -1.6 77 112 .22 7 19 58 16 18.2

Carcass: 29.6 -.23 .42 -.04 .69 150 86

LOT 14A: MISS PRICKLY PEAR 407M

ASA#4422514 Black Polled 3/4 SM 1/4 AN Cow Tattoo: 407M

BD: 2/10/24 Adj BW: 87 Adj WW: 616 **Sired by: LCDR Progressive 106G**

EPDs: 15 -0.8 90 139 0.31 8 26 71 16 15.2

Carcass: 47.5 -0.28 0.48 -0.048 1.02 160 96

This Progressive heifer out of a first calf heifer ranks in the top 10% of the breed for Weaning Weight and Ribeye.



LOT 14A

15

MISS PRICKLY PEAR 221K

Homo Black Homo Polled 3/4 SM 1/4 AN Cow | Tattoo: 221K

Adj BW	82	ASA# 4126610 BIRTHDATE: 2/25/22
Adj WW	666	CCR COWBOY CUT 5048Z
Adj YW	N/A	TJ ROOSEVELT 366E
		TJ 99A
		HOOK'S BLACK HAWK 50B
		MISS PRICKLY PEAR 754E
		MISS PRICKLY PEAR 7004T

CE	BW	WW	YW	ADG	MCE	MILK	MWW	STAY	DOC	CW	YG	MARB	BF	REA	API	TI
13	.2	81	122	.26	9	25	66	19	16.3	3.6	-.34	.19	-.052	.92	134	79

221K ranks in the top 15% of the breed for Ribeye Area. She ratioed 108 at weaning on her first calf.

AI Sire: M4 Predictable 956G | Date: 5/18/24 | Due Date: 2/25/25

Est Plan Mating EPDs: 15 -.4 79 120 .26 8 28 67 19 13.3

Carcass: 39.5 -.26 .42 -.04 .86 155 86

LOT 15A: MISS PRICKLY PEAR 432M

ASA#4422589 Homo Black Homo Polled Purebred SM Cow Tattoo: 432M

BD: 2/16/24 Adj BW: 84 Adj WW: 675 **Sired by: OMF Epic E27**

EPDs: 13 0.2 89 132 0.26 8 23 66 17 15.3

Carcass: 30.4 -0.30 0.20 -0.051 0.83 146 88

This Epic daughter's grandam has a ratio of 105 on 6 calves with a 368 day calving interval.



LOT 15A

FEMALES WITH HEIFER CALVES



16

MISS PRICKLY PEAR 261K

Homo Black Homo Polled 3/4 SM 1/4 AN Cow | Tattoo: 261K

Adj BW	87
Adj WW	611
Adj YW	N/A

ASA# 4126612 | BIRTHDATE: 3/1/22

CCR COWBOY CUT 5048Z

TJ ROOSEVELT 366E

TJ 99A

KM BROKEN BOW 002

MISS PRICKLY PEAR 906G

MISS PRICKLY PEAR 734E

CE	BW	WW	YW	ADG	MCE	MILK	MWW	STAY	DOC	CW	YG	MARB	BF	REA	API	TI
12	.7	82	129	.30	9	25	65	15	16.5	36.2	-.25	.46	-.049	.74	140	86

261K ranks in the top 20% of the breed for Maternal Calving Ease.

AI Sire: KBHR Bold Ruler H152 | Date: 5/19/24 | Due Date: 2/26/25

Est Plan Mating EPDs: 15 -1.1 82 133 .32 11 24 65 16 17.9

Carcass: 36.9 -.22 .64 -.05 .64 171 97

LOT 16A: MISS PRICKLY PEAR 411M

ASA#4422594 Black Polled 1/2 SM 1/2 AN Cow Tattoo: 411M

BD: 2/11/24 Adj BW: 97 Adj WW: 721 Sired by: **TJ Arrowhead 263G**

EPDs: 14 -0.9 92 140 0.30 9 25 67 13 13.5

Carcass: 41.1 -0.17 0.45 -0.034 0.70 143 93

411M ranks in the top 10% of the breed for Weaning Weight.



LOT 16



LOT 16A

17

MISS PRICKLY PEAR 254K

Black Polled 3/4 SM 1/4 AN Cow | Tattoo: 254K

Adj BW	73
Adj WW	601
Adj YW	N/A

ASA# 4126538 | BIRTHDATE: 3/1/22

HOOK'S BEACON 56B

KBHR HIGH ROAD E283

WS MISS SUGAR C4

BASIN RAINMAKER 4404

MISS PRICKLY PEAR 056H

MISS PRICKLY PEAR 417B

CE	BW	WW	YW	ADG	MCE	MILK	MWW	STAY	DOC	CW	YG	MARB	BF	REA	API	TI
16	-2.6	75	117	.26	9	27	64	18	13.8	29.6	-.23	.49	-.030	.75	155	87

This High Road 2 year old ranks in the top 20% of the breed. Her Arrowhead heifer calf in the sale ranks in the top 3% of the breed for Calving Ease and Birth Weight.

AI Sire: CDI Major Impact 280H | Date: 5/18/24 | Due Date: 2/25/25

Est Plan Mating EPDs: 13 .4 86 128 .27 8 24 67 17 13.7

Carcass: 39.0 -0.36 .26 -.05 1.15 144 87

LOT 17A: MISS PRICKLY PEAR 436M

ASA#4422496 Black Polled 5/8 SM 3/8 AN Cow Tattoo: 436M

BD: 2/19/24 Adj BW: 67 Adj WW: 593 Sired by: **TJ Arrowhead 263G**

EPDs: 19 -5.0 74 112 0.24 10 33 71 15 14.0

Carcass: 34.3 -0.21 0.52 -0.040 0.68 162 91

436M ranks in the top 2% breed for Birth Weight and top 4% of the breed for Calving Ease.



LOT 17



LOT 17A

18

MISS PRICKLY PEAR 260K

Homo Black Homo Polled Purebred SM Cow | Tattoo: 260K

Adj BW	82
Adj WW	678
Adj YW	N/A

ASA# 4126487 | BIRTHDATE: 3/1/22

CDI MAINLINE 265D

HOOK'S FRONTLINE 40F

HOOK'S CARINA 15C

BBS TRUE JUSTICE B10

MISS PRICKLY PEAR 014H

MISS PRICKLY PEAR 740E

CE	BW	WW	YW	ADG	MCE	MILK	MWW	STAY	DOC	CW	YG	MARB	BF	REA	API	TI
14	-1.1	76	114	.24	10	33	71	22	14.3	16.2	-.34	.43	-.047	.80	167	90

This 2 year daughter of the 014H cow ranks in the top 10% of the breed for Maternal Calving Ease.

AI Sire: EKRD HL Mr Heartland L92 | Date: 5/18/24 | Due Date: 3/25/25

Est Plan Mating EPDs: 12 -.5 86 135 .31 9 29 72 19 14.2

Carcass: 29.8 -.42 .33 -.06 1.1 157 92



LOT 18A

LOT 18A: MISS PRICKLY PEAR 409M

ASA#4422539 Homo Black Homo Polled Purebred SM Cow Tattoo: 409M

BD: 2/10/24 Adj BW: 81 Adj WW: 616 Sired by: **Schooley Standout 27G**

EPDs: 14 -1.2 71 102 0.19 9 24 60 19 16.9

Carcass: 15.7 -0.26 0.45 -0.045 0.55 157 85

409M ranks in the top 15% breed for Birth Weight and Maternal Calving Ease.



LOT 19

19

RKNWHRT MS FORWARD 226K

Black Homo Polled 1/2 SM 1/2 AN Cow | Tattoo: 226K

Adj BW	80	ASA# 4068379 BIRTHDATE: 2/26/22
Adj WW	591	NICHOLS MANIFEST T79
Adj YW	N/A	MF STRAIGHTFORWARD Y9
		MF PINK
		CAR 504 DUKE 898
		OX BOW LUCY 068
		OX BOW LUCY 6110

CE	BW	WW	YW	ADG	MCE	MILK	MWW	STAY	DOC	CW	YG	MARB	BF	REA	API	TI
16	-1.0	78	126	.30	11	31	63	13	11.9	43.3	-.02	.40	-.008	.43	139	84

226K ranks in the top 4% of the breed for Maternal Calving Ease.

AI Sire: RBS Harvest Moon L331 | Date: 5/19/24 | Due Date: 2/26/25

Est Plan Mating EPDs: 15 -.2 86 132.29 10 27 66 13 11.1

Carcass: 28.9 -.29 .27 -.05 .76 138 87

LOT 19A: RKNWHRT MS. EPIC 435M

ASA#4423528 Black Homo Polled 3/4 SM 1/4 AN Cow Tattoo: 435M

BD: 2/18/24 Adj BW: 79 Adj WW: 578 **Sired by: OMF Epic E27**

EPDs: 16 -1.3 78 119 0.26 10 28 65 14 13.1

Carcass: 36.7 -0.14 0.31 -0.029 0.58 143 84

435M ranks in the top 15% of the breed for Maternal Calving Ease. Grandam is still producing at 14 years old.



LOT 20

20

MISS PRICKLY PEAR 232K

Black Homo Polled 1/2 SM 1/2 AN Cow | Tattoo: 232K

Adj BW	90	ASA# 4126416 BIRTHDATE: 2/26/22
Adj WW	689	CONNELLY COMRADE 1385
Adj YW	N/A	KESSLERS COMMODORE 6516
		KESSLERS RAINBOW 0595
		SRS RIGHT-ON 22R
		MISS PRICKLY PEAR 139Y
		MISS PRICKLY PEAR 419P

CE	BW	WW	YW	ADG	MCE	MILK	MWW	STAY	DOC	CW	YG	MARB	BF	REA	API	TI
11	1.1	85	137	.32	8	29	73	14	12.8	48.3	-.09	.46	-.032	.55	136	87

232K is the last female out of her 12 year old dam. Her heifer calf ratioed 103 against 58 contemporaries.

AI Sire: M4 Predicable 956G | Date: 5/19/24 | Due Date: 2/26/25

Est Plan Mating EPDs: 14 .1 81 127 .29 8 30 71 16 11.6

Carcass: 48.4 -.13 .55 -.03 .67 150 88

LOT 20A: MISS PRICKLY PEAR 413M

ASA#4422400 Black Homo Polled 1/2 SM 1/2 AN Cow Tattoo: 413M

BD: 2/12/24 Adj BW: 81 Adj WW: 647 **Sired by: TJ Arrowhead 263G**

EPDs: 15 -1.7 86 132 0.29 10 33 75 13 13.5

Carcass: 43.6 -0.14 0.50 -0.041 0.58 147 92

413M ranks in the top 3% of the breed for Maternal Milk.



LOT 20A

21

MISS PRICKLY PEAR 259K

Black Polled Purebred SM Cow | Tattoo: 259K

Adj BW	99	ASA# 4126525 BIRTHDATE: 3/1/22
Adj WW	696	ESPJ302
Adj YW	N/A	RCR WRANGLER S215
		RCR LIZ L40
		ELLINGSON DOMINATOR W905
		MISS PRICKLY PEAR 347A
		MISS PRICKLY PEAR 161Y

CE	BW	WW	YW	ADG	MCE	MILK	MWW	STAY	DOC	CW	YG	MARB	BF	REA	API	TI
Available Sale Day																

This Wrangler weaned off her first calf at 736 pounds ratioing 119 against 58 contemporaries.

AI Sire: KBHR Bold Ruler H152 | Date: 5/19/24 | Due Date: 2/26/25

LOT 21A: MISS PRICKLY PEAR 418M

ASA#4422503 Black Polled 1/2 SM 1/2 AN Cow

BD: 2/14/24 Tattoo: 418M Adj BW: 89 Adj WW: 746

Sired by: Tehama Patriarch F028

EPDs: 13 1.1 96 156 0.37 10 28 73 16 12.3

Carcass: 47.5 -0.08 0.38 -0.016 0.62 143 91

418M ranks in the top 3% of the breed for Weaning and Yearling Weight.



LOT 21A

FEMALES WITH HEIFER CALVES



22

MISS PRICKLY PEAR 262K

Black Polled 1/4 SM 3/4 AN Cow | Tattoo: 262K

Adj BW	75	ASA# 4126607 BIRTHDATE: 3/2/22
Adj WW	611	BASIN RAINMAKER 2704
Adj YW	N/A	BASIN RAINMAKER 4404
		BASIN JOY 1036
		BLEVINS THUNDER 6965
		MISS PRICKLY PEAR 083H
		MISS PRICKLY PEAR 257Z

CE	BW	WW	YW	ADG	MCE	MILK	MWW	STAY	DOC	CW	YG	MARB	BF	REA	API	TI
15	-1.9	71	109	.24	10	26	61	15	12.0	34.5	.03	.50	.006	.30	140	80

Ranks in the top 10% of the breed for Maternal Calving Ease. Ratioed 102 on her first calf with 58 contemporaries.

AI Sire: CDI Major Impact 280H | Date: 5/18/24 | Due Date: 2/25/25

Est Plan Mating EPDs: 12 .7 83 125 .26 8 24 65 16 12.8

Carcass: 41.4 -.23 .27 -.03 .93 131 81

LOT 22A: MISS PRICKLY PEAR 428M

ASA#4422590 Black Polled 5/8 SM 3/8 AN Cow
BD: 2/15/24 Tattoo: 428M Adj BW: 77 Adj WW: 639

Sired by: LCDR Progressive 106G

EPDs: 17 -2.4 81 126 0.28 10 28 68 16 12.8

Carcass: 42.7 -0.13 0.54 -0.028 0.63 157 91

This Progressive heifer ranks in the top 15% of the breed for API and top 20% for TI.



LOT 22



LOT 22A

23

MISS PRICKLY PEAR 223K

Black Polled 5/8 SM 3/8 AN Cow | Tattoo: 223K

Adj BW	95	ASA# 4126476 BIRTHDATE: 2/25/22
Adj WW	629	TJ MAKERS MARK 215Y
Adj YW	N/A	SHSF FREIGHTLINER D10
		HOOKS PUNKY 5P
		KM BROKEN BOW 002
		MISS PRICKLY PEAR 903G
		MISS PRICKLY PEAR E743

CE	BW	WW	YW	ADG	MCE	MILK	MWW	STAY	DOC	CW	YG	MARB	BF	REA	API	TI
9	2.1	84	135	.32	5	19	61	13	9.4	44.4	-.28	.35	-.059	.85	124	82

223K dam has a Weaning Ratio of 102 on her first 3 calves.

AI Sire: TJ Roosevelt 366E | Date: 5/19/24 | Due Date: 2/26/25

Est Plan Mating EPDs: 8 3.0 87 136 .31 6 21 64 16 14.1

Carcass: 33.1 -.32 .32 -.06 .80 137 85

LOT 23A: MISS PRICKLY PEAR 406M

ASA#4422545 Black Polled 3/4 SM 1/4 AN Cow
BD: 2/10/24 Tattoo: 406M Adj BW: 67 Adj WW: 597

Sired by: LCDR Progressive 106G

EPDs: 15 -2.0 82 129 0.30 7 25 68 15 11.5

Carcass: 47.7 -0.28 0.47 -0.060 0.91 157 93

406M ranks in the top 15% of the breed for API and TI.



LOT 24

24

MISS PRICKLY PEAR 905G

Homo Black Homo Polled 1/2 SM 1/2 AN Cow | Tattoo: 905G

Adj BW	75	ASA# 3645536 BIRTHDATE: 2/11/19
Adj WW	596	CONNELLY BLACK GRANITE
Adj YW	N/A	WERNER FLAT TOP 4136
		WERNER LADY 0304
		RCR STETSON T17
		MISS PRICKLY PEAR 720E
		MISS PRICKLY PEAR C528

CE	BW	WW	YW	ADG	MCE	MILK	MWW	STAY	DOC	CW	YG	MARB	BF	REA	API	TI
16	-3.4	72	122	.32	8	32	68	18	8.9	28.6	-.24	.47	-.032	.76	156	87

905G ranks in the top 10% of the breed for Birth Weight and top 15% of the breed for Calving Ease.

AI Sire: CDI Major Impact 280H | Date: 5/24/24 | Due Date: 3/4/25

Est Plan Mating EPDs: 13 -.1 84 131 .3 7 27 69 17 11.2

Carcass: 38.5 -.37 .25 -.05 1.16 141 85

LOT 24A: MISS PRICKLY PEAR 442M

ASA#4422414 Homo Black Homo Polled 1/2 SM 1/2 AN Cow
BD: 2/22/24 Tattoo: 442M Adj BW: 58 Adj WW: 541

Sired by: M4 Predictable 956G

EPDs: 18 -3.6 68 111 0.27 8 33 69 18 9.6

Carcass: 38.5 -0.20 0.56 -0.032 0.78 162 86

Predictable heifer that ranks in the top 10% of the breed for API.





FEMALES WITH HEIFER CALVES



LOT 25A



OMF Epic E27, Sire Lot 25A

25

RKNWHRT COUNTDOWN 907G

Black Polled Purebred AN Cow | Tattoo: 907G

Adj BW	80
Adj WW	588
Adj YW	N/A

ASA# 3645690 | BIRTHDATE: 2/12/19
 CONNEALY FINAL SOLUTION
CONNEALY COUNTDOWN
 ENTARNA OF CONANGA 140
 H A IMAGE MAKER 0415
RKNWHRT IDEALS IMAGE 012X
 CCAR IDEAL U476

CE	BW	WW	YW	ADG	MCE	MILK	MWW	STAY	DOC	CW	YG	MARB	BF	REA	API	TI
15	-5	72	123	.32	8	32	69	16	14.2	47.9	.22	.46	.049	.20	124	69

This embryo daughter of the 012X cow has a ratio of 103 on 4 calves.

AI Sire: TJ Roosevelt 366E | Date: 5/25/24 | Due Date: 3/4/25

Est Plan Mating EPDs: 11 1.7 80 130 .31 7 27 68 17 16.5

Carcass: 34.8 -.07 .37 -.01 .47 134 80

LOT 25A: RKNWHRT MS. EPIC 452M

ASA#4423526 Black Polled 1/2 SM 1/2 AN Cow Tattoo: 452M

BD: 2/25/24 Adj BW: 85 Adj WW: 611 **Sired by: OMF Epic E27**

EPDs: 14 -0.2 79 124 0.28 8 28 68 16 14.3

Carcass: 39.0 -0.02 0.34 0.000 0.47 136 80

The dam of 452M has a Weaning Ratio of 103 and a calving interval of 368 days.

FEMALES THAT WEANED OFF BULL CALVES



LOT 26

26

MISS PRICKLY PEAR 209K

Black Homo Polled 3/4 SM 1/4 AN Cow | Tattoo: 209K

Adj BW	78
Adj WW	645
Adj YW	N/A

ASA# 4126536 | BIRTHDATE: 2/23/22
 HOOK'S BEACON 56B
KBHR HIGH ROAD E283
 WS MISS SUGAR C4
 S A V HOMESTEADER 7282
MISS PRICKLY PEAR A331
 MISS PRICKLY PEAR 504R

CE	BW	WW	YW	ADG	MCE	MILK	MWW	STAY	DOC	CW	YG	MARB	BF	REA	API	TI
18	-2.6	77	123	.29	12	28	67	17	13.3	35.9	-.25	.42	-.034	.86	154	87

209K ranks in the top 3% of the breed for Maternal Calving Ease. Her dam has ratioed 100 on 8 calves.

AI Sire: KBHR Bold Ruler H152 | Date: 5/19/24 | Due Date: 2/26/25

Est Plan Mating EPDs: 18 -2.8 80 130 .31 12 26 66 17 16.3

Carcass: 36.7 -.22 .62 -.04 .70 178 97



LOT 27

27

MISS PRICKLY PEAR 249K

Black Polled Purebred SM Cow | Tattoo: 249K

Adj BW	79
Adj WW	580
Adj YW	N/A

ASA# 4126609 | BIRTHDATE: 2/28/22
 CCR COWBOY CUT 5048Z
TJ ROOSEVELT 366E
 TJ 99A
 LRS RANGE BOSS 901Z
MISS PRICKLY PEAR 707E
 MISS PRICKLY PEAR 368A

CE	BW	WW	YW	ADG	MCE	MILK	MWW	STAY	DOC	CW	YG	MARB	BF	REA	API	TI
11	.3	74	107	.21	7	19	55	18	15.0	13.2	-.30	.18	-.055	.56	138	78

249K's dam has a calving interval of 361 days on 6 calves.

AI Sire: Schooley Standout 27G | Date: 5/19/24 | Due Date: 2/26/25

Est Plan Mating EPDs: 13 -1.0 69 96 .17 7 18 52 17 17.2

Carcass: 14.2 -.24 .32 -.05 .43 144 79

BRED FEMALES



28

MISS PRICKLY PEAR 206K

Black Polled 1/2 SM 1/2 AN Cow | Tattoo: 206K

ASA# 4126619

BIRTHDATE: 2/22/22

MOHNEN SUBSTANTIAL 272

SITZ STELLAR 726D

SITZ PRIDE 200B

HOOK'S BLACK HAWK 50B

MISS PRICKLY PEAR 858F

MISS PRICKLY PEAR 581C

CE	BW	WW	YW	ADG	MCE	MILK	MWW	STAY	DOC	CW	YG	MARB	BF	REA	API	TI
13	-1.2	78	129	.32	7	20	60	17	11.6	46.6	-.06	.39	.008	.74	143	84

206K ratioed 107 at weaning on her Progressive calf. Her dam has a calving interval of 366 days.

AI Sire: Schooley Standout 27G | Date: 5/19/24 | Due Date: 2/26/25

Est Plan Mating EPDs: 13 -1.7 71 107 .23 7 18 54 17 15.5

Carcass: 30.9 -.12 .43 -.02 .52 147 81

Adj BW	84
Adj WW	597
Adj YW	N/A

29

MISS PRICKLY PEAR 207K

Black Polled 3/8 SM 5/8 AN Cow | Tattoo: 207K

30

MISS PRICKLY PEAR 239K

Homo Black Homo Polled 5/8 SM 3/8 AN Cow | Tattoo: 239K

Adj BW	77
Adj WW	585
Adj YW	N/A

ASA# 4126620 | BIRTHDATE: 2/22/22

MOHNEN SUBSTANTIAL 272

SITZ STELLAR 726D

SITZ PRIDE 200B

PPSR MONTANA KING 81Y

MISS PRICKLY PEAR D658

MISS PRICKLY PEAR 040X

CE	BW	WW	YW	ADG	MCE	MILK	MWW	STAY	DOC	CW	YG	MARB	BF	REA	API	TI
13	-1.4	73	119	.29	7	20	58	18	11.5	4.4	.15	.40	.019	.10	139	78

The Steller daughters are perfect udder and always bring home big calves.

AI Sire: RBS Harvest Moon L331 | Date: 5/19/24 | Due Date: 2/26/25

Est Plan Mating EPDs: 13 -.4 83 129 .28 7 22 64 15 10.9

Carcass: 27.4 -.21 .27 -.04 .59 138 84

Adj BW	86
Adj WW	629
Adj YW	N/A

ASA# 4126478 | BIRTHDATE: 2/27/22

TJ MAKERS MARK 215Y

SHSF FREIGHTLINER D10

HOOKS PUNKY 5P

CCR PAYWEIGHT 0327C

MISS PRICKLY PEAR 961G

MISS PRICKLY PEAR 356A

CE	BW	WW	YW	ADG	MCE	MILK	MWW	STAY	DOC	CW	YG	MARB	BF	REA	API	TI
11	1.8	88	134	.29	5	19	62	15	9.2	46.7	-.23	.23	-.052	.79	125	81

This Freightliner daughter ratioed 103 at weaning on her first calf.

AI Sire: Schooley Standout 27G | Date: 5/20/24 | Due Date: 2/27/25

Est Plan Mating EPDs: 13 -.2 76 110 .21 7 17 55 15 14.3

Carcass: 30.9 -.20 .35 -.05 .54 142 82

31

MISS PRICKLY PEAR 282K

Black Polled 3/4 SM 1/4 AN Cow | Tattoo: 282K

Adj BW	87
Adj WW	548
Adj YW	N/A

ASA# 4126495 | BIRTHDATE: 3/4/22

NLC PROGRESSIVE 40C

NLC GEN TEN 82E

NLC A109 AMBER

BLEVINS THUNDER 6965

MISS PRICKLY PEAR G929

MISS PRICKLY PEAR 851U

CE	BW	WW	YW	ADG	MCE	MILK	MWW	STAY	DOC	CW	YG	MARB	BF	REA	API	TI
9	2.0	63	95	.20	5	23	55	15	1.4	18.9	-.18	.34	-.035	.42	118	69

This 2 year old ratioed 104 at weaning on her first calf against 59 contemporaries.

AI Sire: Schooley Standout 27G | Date: 5/19/24 | Due Date: 2/26/25

Est Plan Mating EPDs: 12 -.1 64 90 .17 6 19 51 16 14.9

Carcass: 17.0 -.18 .40 -.04 .36 138 76



LOT 31



BRED FEMALES



LOT 32

32

MISS PRICKLY PEAR 281K

Black Polled Purebred SM Cow | Tattoo: 281K

Adj BW	88
Adj WW	666
Adj YW	N/A

ASA# 4126402 | BIRTHDATE: 3/4/22
 HOOK'S YELLOWSTONE 97Y
KOCH BIG TIMBER 685D
 KOCH MS HOOKS BOY
 TJ ROOSEVELT 366E
MISS PRICKLY PEAR 035H
 MISS PRICKLY PEAR 540C

CE	BW	WW	YW	ADG	MCE	MILK	MWW	STAY	DOC	CW	YG	MARB	BF	REA	API	TI
13	-.5	78	119	.26	8	24	63	18	11.9	29.9	-.17	.39	-.034	.53	154	87

This Big Timber daughter ratioed 110 on her first calf against 58 contemporaries.

AI Sire: KBHR Bold Ruler H152 | Date: 5/20/24 | Due Date: 2/27/25

Est Plan Mating EPDs: 15 -1.7 81 127 .30 10 24 64 18 15.6
Carcass: 33.7 -.18 .61 -.04 .54 173 95



LOT 33

33

MISS PRICKLY PEAR 251K

Black Polled 1/2 SM 1/2 AN Cow | Tattoo: 251K

Adj BW	92
Adj WW	706
Adj YW	N/A

ASA# 4126425 | BIRTHDATE: 3/1/22
 CONNEALY COMRADE 1385
KESSLERS COMMODORE 6516
 KESSLERS RAINBOW 0595
 GIBBS 7258E BAMA BOY
MISS PRICKLY PEAR H002
 MISS PRICKLY PEAR 350A

CE	BW	WW	YW	ADG	MCE	MILK	MWW	STAY	DOC	CW	YG	MARB	BF	REA	API	TI
13	1.3	95	149	.34	9	31	79	16	12.9	6.8	-.12	.43	-.030	.81	143	92

This long made daughter of Commodore ranks in the top 4% weaning weight.

AI Sire: KBHR Bold Ruler H152 | Date: 5/18/24 | Due Date: 2/25/25

Est Plan Mating EPDs: 15 -.8 89 143 .34 11 27 72 17 16.1
Carcass: 49.2 -.15 .63 -.04 .68 168 98



LOT 34

34

MISS PRICKLY PEAR 236K

Black Polled 3/4 SM 1/4 AN Cow | Tattoo: 236K

Adj BW	73
Adj WW	659
Adj YW	N/A

ASA# 4126489 | BIRTHDATE: 2/27/22
 CDI MAINLINE 265D
HOOK'S FRONTLINE 40F
 HOOK'S CARINA 15C
 SHSF FREIGHTLINER D10
MISS PRICKLY PEAR 045H
 MISS PRICKLY PEAR C571

CE	BW	WW	YW	ADG	MCE	MILK	MWW	STAY	DOC	CW	YG	MARB	BF	REA	API	TI
14	-2.3	71	112	.26	9	30	65	19	11.9	27.1	-.36	.41	-.056	.92	149	83

This Frontline daughter ranks in the top 15% of the breed for Birth Weight. Grandam raised a heifer that was showed in the NILE Merit Show.

AI Sire: Schooley Standout 27G | Date: 5/19/24 | Due Date: 2/26/25

Est Plan Mating EPDs: 14 -2.3 68 99 .20 8 23 57 18 15.7
Carcass: 21.1 -.27 .44 -.05 .61 155 83



Kesslers Commodore 6516, AI Sire

35

MISS PRICKLY PEAR 291K

Black Polled Purebred SM Cow | Tattoo: 291K

Adj BW	96
Adj WW	680
Adj YW	N/A

ASA# 4126524 | BIRTHDATE: 3/8/22
 ESPJ302
RCR WRANGLER S215
 RCR LIZ L40
 KAPPES TRAILBLAZER S516
MISS PRICKLY PEAR 173Y
 65R/MS PRICKLY PEAR 596R

CE	BW	WW	YW	ADG	MCE	MILK	MWW	STAY	DOC	CW	YG	MARB	BF	REA	API	TI
Available Sale Day																

The Wrangler daughters are long made cows with perfect udders.

AI Sire: Kesslers Commodore 6516 | Date: 5/18/24 | Due Date: 2/25/25



LOT 36

36

MISS PRICKLY PEAR 216K

Black Polled 1/2 SM 1/2 AN Cow | Tattoo: 216K

ASA# 4126597

BIRTHDATE: 2/24/22

VERMILION SIRLOIN
HA PRIME CUT 4493
HA MISS BLACKCAP 9127
CCR WIDE RANGE 9005A
MISS PRICKLY PEAR 833F
MISS PRICKLY PEAR 831U

CE	BW	WW	YW	ADG	MCE	MILK	MWW	STAY	DOC	CW	YG	MARB	BF	REA	API	TI
11	.8	80	128	.30	6	16	56	13	12.7	43.3	-.15	.36	-.017	.78	127	81

Adj BW	87
Adj WW	560
Adj YW	N/A

This 2 year olds calf ratioed 115 against 58 contemporaries.

AI Sire: Schooley Standout 27G | Date: 5/19/24 | Due Date: 2/26/25

Est Plan Mating EPDs: 13 -.7 72 107 .22 7 16 52 14 16.1

Carcass: 29.2 -.16 .41 -.03 .54 138 80

37

MISS PRICKLY PEAR 272K

Black Polled 1/2 SM 1/2 AN Cow | Tattoo: 272K

ASA# 4126497 | BIRTHDATE: 3/2/22

S CHISUM 6175
CIRCLE L GUS
CIRCLE L PRIDE X097
RC CLUB KING 040R
MISS PRICKLY PEAR 331A
65R/MS PRICKLY PEAR 544R



LOT 37

Adj BW	80
Adj WW	595
Adj YW	N/A

CE	BW	WW	YW	ADG	MCE	MILK	MWW	STAY	DOC	CW	YG	MARB	BF	REA	API	TI
16	-2.8	70	106	.23	11	20	54	15	12.5	39.0	.06	.24	.005	.23	131	75

272K is out of a perfect uddered 11 year cow that has always brought home a nice calf.

AI Sire: CDI Major Impact 280H | Date: 5/20/24 | Due Date: 2/27/25

Est Plan Mating EPDs: 12 .3 83 123 .26 8 21 62 15 13.0

Carcass: 43.7 -.22 .14 -.03 .89 129 80

38

MISS PRICKLY PEAR 294K

Hetero Black Polled 1/2 SM 1/2 AN Cow | Tattoo: 294K

ASA# (4126339) | BIRTHDATE: 3/9/22

BASIN RAINMAKER 2704
BASIN RAINMAKER 4404
BASIN JOY 1036
HOOKS SHEAR FORCE 38K
MISS PRICKLY PEAR 6053S
MISS PRICKLY PEAR 384N



LOT 38

Adj BW	88
Adj WW	614
Adj YW	N/A

CE	BW	WW	YW	ADG	MCE	MILK	MWW	STAY	DOC	CW	YG	MARB	BF	REA	API	TI
14	-.9	68	106	.24	9	30	63	18	13.1	32.4	-.20	.31	-.021	.77	138	76

294K is an embryo daughter out of our great 17 year old Shear Force donor.

AI Sire: M4 Predictable 956G | Date: 5/19/24 | Due Date: 2/26/25

Est Plan Mating EPDs: 16 -1.0 72 112 .25 8 31 66 18 11.7

Carcass: 40.4 -.19 .48 -.03 .78 151 82



LOT 39

39

MISS PRICKLY PEAR 147J

Black Polled 1/2 SM 1/2 AN Cow | Tattoo: 147J

Adj BW	89
Adj WW	613
Adj YW	N/A

ASA# 3958914 | BIRTHDATE: 2/26/21

SYDGEN EXCEED 3223

SYDGEN ENHANCE

SYDGEN RITA 2618

RC CLUB KING 040R

MISS PRICKLY PEAR 227Z

MISS PRICKLY PEAR 492P

CE	BW	WW	YW	ADG	MCE	MILK	MWW	STAY	DOC	CW	YG	MARB	BF	REA	API	TI
11	.8	76	137	.38	7	26	65	18	14.3	38.1	-.12	.56	-.039	.46	151	85

AI Sire: Ellingson Blazer X37 | Date: 5/25/24 | Due Date: 3/4/25

Est Plan Mating EPDs: 14 -.4 72 118 .29 8 25 62 16 8.3

Carcass: 38.7 -.28 .13 -.08 .63 134 77

40

MISS PRICKLY PEAR 159J

Black Homo Polled 5/8 SM 3/8 AN Cow | Tattoo: 159J

ASA# 3958888

BIRTHDATE: 2/28/21

Adj BW	89
Adj WW	617
Adj YW	N/A

HOOK'S BLACK HAWK 50B

HOOK'S EAGLE 6E

HOOK'S CRYSTAL 1C

CCR CONVOY 7005X

MISS PRICKLY PEAR 358A

MISS PRICKLY PEAR 941W

CE	BW	WW	YW	ADG	MCE	MILK	MWW	STAY	DOC	CW	YG	MARB	BF	REA	API	TI
8	.6	82	132	.31	4	26	67	17	14.7	4.2	-.16	.46	-.013	.81	140	85

This 3 year olds dam has a weaning ratio of 103 on 10 calves.

AI Sire: M4 Predictable 956G | Date: 5/24/24 | Due Date: 3/3/25

Est Plan Mating EPDs: 13 -.2 79 125 .29 6 29 68 18 12.5

Carcass: 44.3 -.17 .55 -.02 .80 156 89



LOT 41

41

RKNWHRT BEACON 904G

Homo Black Homo Polled 1/2 SM 1/2 AN Cow | Tattoo: 904G

Adj BW	70
Adj WW	573
Adj YW	N/A

ASA# 3645688 | BIRTHDATE: 2/11/19

HOOKS SHEAR FORCE 38K

HOOK'S BEACON 56B

HOOKS ZAFIRAH 41Z

H A IMAGE MAKER 0415

RKNWHRT IDEALS IMAGE 012X

CCAR IDEAL U476

CE	BW	WW	YW	ADG	MCE	MILK	MWW	STAY	DOC	CW	YG	MARB	BF	REA	API	TI
18	-2.3	72	112	.25	11	28	64	18	11.8	39.7	-.06	.65	.018	.72	164	88

Maternal sister to 907G ranking in the top 10% of the breed for Calving Ease and Maternal Calving Ease.

AI Sire: Schooley Standout 27G | Date: 5/24/24 | Due Date: 3/3/25

Est Plan Mating EPDs: 16 -2.3 68 99 .19 9 22 56 17 15.6

Carcass: 27.4 -.12 .56 -.01 .51 159 84



LOT 42

42

MISS PRICKLY PEAR 906G

Homo Black Homo Polled 1/2 SM 1/2 AN Cow | Tattoo: 906G

Adj BW	73
Adj WW	568
Adj YW	N/A

ASA# 3645477 | BIRTHDATE: 2/11/19

SUMMITCREST COMPLETE 1P55

KM BROKEN BOW 00Z

SUMMITCREST PRINCESS 0P12

HOOK'S BEACON 56B

MISS PRICKLY PEAR 734E

MISS PRICKLY PEAR 399A

CE	BW	WW	YW	ADG	MCE	MILK	MWW	STAY	DOC	CW	YG	MARB	BF	REA	API	TI
18	-2.8	78	128	.31	12	27	67	12	14.0	54.3	-.15	.63	-.033	.78	156	93

906G ranks in the top 2% of the breed for Maternal Calving Ease, top 10% for Calving Ease and top 15% for Birth Weight.

AI Sire: M4 Predictable 956G | Date: 5/24/24 | Due Date: 3/4/25

Est Plan Mating EPDs: 18 -1.9 77 123 .29 10 29 68 15 12.2

Carcass: 51.4 -.16 .64 -.03 .79 160 91



LOT 43

43

MISS PRICKLY PEAR 351L

Black Homo Polled Purebred SM Cow | Tattoo: 351L

ASA# 4288737

BIRTHDATE: 3/2/23

CE	BW	WW	YW	ADG	MCE	MILK	MWW	STAY	DOC	CW	YG	MARB	BF	REA	API	TI
13	-.4	68	93	.16	8	24	58	19	12.4	23.1	-.25	.44	-.037	.67	154	82

351L's dam ratioed 104 on 3 calves at weaning with a calving interval of 366 days. She ranks in the top 15% of the breed for Maternal Calving Ease.

Adj BW **89**

Adj WW **636**

Adj YW **745**

OMF EPIC E27
SCHOOLEY STANDOUT 27G
 CLRS BEAUTY QUEEN 420 B
 HOOK'S BEACON 56B
MISS PRICKLY PEAR 946G
 MISS PRICKLY PEAR 063X

AI Sire: Tehama Patriarch F028 | Date: 5/16/24 | Due Date: 2/23/25
 Est Plan Mating EPDs: 16 -2.2 76 124 .30 11 27 66 15 12.8
 Carcass: 41.9 -.06 .63 .00 .61 156 89

44

MISS PRICKLY PEAR 377L

Black Homo Polled 3/4 SM 1/4 AN Cow | Tattoo: 377L

ASA# 4288652 | BIRTHDATE: 3/7/23

OMF EPIC E27
SCHOOLEY STANDOUT 27G
 CLRS BEAUTY QUEEN 420 B
 JC MR NATIONAL 610Y
MISS PRICKLY PEAR 531C
 MISS PRICKLY PEAR 358A



LOT 44

Adj BW	80
Adj WW	641
Adj YW	815

CE	BW	WW	YW	ADG	MCE	MILK	MWW	STAY	DOC	CW	YG	MARB	BF	REA	API	TI
9	.6	75	114	.25	6	26	63	18	14.0	3.1	-.09	.46	-.032	.31	137	80

This Standout daughter's dam has a Weaning Ratio of 109 on 8 calves with a calving interval of 366 days.

AI Sire: LCDR Progressive 106G | Date: 5/14/24 | Due Date: 2/21/25
 Est Plan Mating EPDs: 14 -1.3 83 127 .28 8 27 69 17 13.8
 Carcass: 40.5 -.19 .52 -.05 .64 162 93

45

RKNWHRT MS STANDOUT 374L

Black Homo Polled 3/4 SM 1/4 AN Cow | Tattoo: 374L

ASA# 4291731 | BIRTHDATE: 3/5/23

OMF EPIC E27
SCHOOLEY STANDOUT 27G
 CLRS BEAUTY QUEEN 420 B
 SVR W817
RKNWHRT BLACK LADY B406
 RKNWHRT BLACK LADY 92W

Adj BW	92
Adj WW	632
Adj YW	774

CE	BW	WW	YW	ADG	MCE	MILK	MWW	STAY	DOC	CW	YG	MARB	BF	REA	API	TI
13	-1.0	62	90	.17	8	21	52	17	13.9	13.3	-.14	.47	-.033	.23	137	75

This deep bodied Standout daughter is out of a 10 year old dam that always brings home a nice calf.

AI Sire: M4 Predictable 956G | Date: 5/14/24 | Due Date: 2/21/25
 Est Plan Mating EPDs: 15 -1.0 69 104 .22 8 26 61 18 12.1
 Carcass: 30.9 -.16 .56 -.03 .51 154 83

46

RKNWHRT MS STANDOUT 309L

Black Homo Polled 1/2 SM 1/2 AN Cow | Tattoo: 309L

ASA# 4291734 | BIRTHDATE: 2/16/23

OMF EPIC E27
SCHOOLEY STANDOUT 27G
 CLRS BEAUTY QUEEN 420 B
 CIRCLE L GUS
RKNWHRT PRINCESS 160J
 DIAMOND PRINCESS PRIDE 453Y

Adj BW	72
Adj WW	578
Adj YW	707

CE	BW	WW	YW	ADG	MCE	MILK	MWW	STAY	DOC	CW	YG	MARB	BF	REA	API	TI
13	-2.2	65	98	.21	7	19	50	12	17.1	32.1	.01	.54	.002	.30	136	79

309L ranks in the top 20% of the breed for Birth Weight.

AI Sire: KBHR Bold Ruler H152 | Date: 5/13/24 | Due Date: 2/20/25
 Est Plan Mating EPDs: 16 -2.6 74 117 .27 10 21 58 15 18.2
 Carcass: 34.8 -.09 .68 -.02 .42 163 91



LOT 47

47

MISS PRICKLY PEAR 350L

Black Homo Polled Purebred SM Cow | Tattoo: 350L

Adj BW	93
Adj WW	593
Adj YW	717

ASA# 4288782 | BIRTHDATE: 3/2/23
 OMF EPIC E27
SCHOOLEY STANDOUT 27G
 CLRS BEAUTY QUEEN 420 B
 ELLINGSON DOMINATOR W905
MISS PRICKLY PEAR 378A
 65R/MS PRICKLY PEAR 532R

CE	BW	WW	YW	ADG	MCE	MILK	MWW	STAY	DOC	CW	YG	MARB	BF	REA	API	TI
10	1.4	72	105	.21	5	16	52	16	13.3	16.3	-.30	.20	-.066	.51	131	75

350L is out of a 11 year old dam that always brings home a nice calf.

AI Sire: M4 Predictable 956G | Date: 5/14/24 | Due Date: 2/20/25

Est Plan Mating EPDs: 14 .2 74 111 .24 7 24 60 17 11.8

Carcass: 32.4 -.24 .42 -.05 .65 149 83



LOT 48

48

MISS PRICKLY PEAR 331L

Homo Black Homo Polled 5/8 SM 3/8 AN Cow | Tattoo: 331L

Adj BW	74
Adj WW	581
Adj YW	720

ASA# 4288620 | BIRTHDATE: 2/25/23
 OMF EPIC E27
SCHOOLEY STANDOUT 27G
 CLRS BEAUTY QUEEN 420 B
 BLEVINS HEISMAN ANSWER 7526
MISS PRICKLY PEAR 967G
 MISS PRICKLY PEAR C571

CE	BW	WW	YW	ADG	MCE	MILK	MWW	STAY	DOC	CW	YG	MARB	BF	REA	API	TI
15	-3.7	62	91	.18	8	22	53	16	15.6	24.8	-.14	.43	-.033	.38	142	77

361L grandam raised a heifer that was chosen for the NILE Merit Program in 2023.

AI Sire: M4 Predictable 956G | Date: 5/16/24 | Due Date: 2/23/25

Est Plan Mating EPDs: 16 -2.4 69 104 .22 8 27 61 17 13.0

Carcass: 36.6 -.16 .54 -.03 .59 155 83



LOT 49

49

MISS PRICKLY PEAR 318L

Black Homo Polled 5/8 SM 3/8 AN Cow | Tattoo: 318L

Adj BW	78
Adj WW	670
Adj YW	803

ASA# 4288641 | BIRTHDATE: 2/20/23
 OMF EPIC E27
SCHOOLEY STANDOUT 27G
 CLRS BEAUTY QUEEN 420 B
 BLEVINS HEISMAN ANSWER 7526
MISS PRICKLY PEAR 067H
 MISS PRICKLY PEAR 446B

CE	BW	WW	YW	ADG	MCE	MILK	MWW	STAY	DOC	CW	YG	MARB	BF	REA	API	TI
16	-2.6	73	106	.21	9	24	61	17	16.6	25.9	-.08	.51	-.021	.31	150	85

318L weaned off her dam at 782 pounds ratioing 107. She ranks in the top 15% of the breed for Calving Ease and Birth Weight.

AI Sire: M4 Predictable 956G | Date: 5/14/24 | Due Date: 2/21/25

Est Plan Mating EPDs: 17 -1.8 75 112 .24 8 28 65 18 13.5

Carcass: 37.2 -.13 .58 -.03 .55 159 87

50

MISS PRICKLY PEAR 324L

Black Polled 3/4 SM 1/4 AN Cow | Tattoo: 324L

CE	BW	WW	YW	ADG	MCE	MILK	MWW	STAY	DOC	CW	YG	MARB	BF	REA	API	TI
11	.7	78	113	.22	6	20	60	16	17.0	33.9	-.17	.35	-.033	.59	130	79

This Standout daughter ratioed 107 at weaning against 110 contemporaries.

ASA# 4288761
BIRTHDATE: 2/22/23

OMF EPIC E27
SCHOOLEY STANDOUT 27G
 CLRS BEAUTY QUEEN 420 B
 LD CAPITALIST 316
MISS PRICKLY PEAR 062H
 MISS PRICKLY PEAR 425B

Adj BW	97
Adj WW	675
Adj YW	774

AI Sire: M4 Predictable 956G | Date: 5/14/24 | Due Date: 2/21/25

Est Plan Mating EPDs: 14 -.2 77 115 .24 7 26 64 17 13.7

Carcass: 41.2 -.17 .50 -.03 .69 151 86

BRED HEIFERS



51

MISS PRICKLY PEAR 307L

Black Homo Polled 3/8 SM 5/8 AN Cow | Tattoo: 307L

Adj BW	85
Adj WW	628
Adj YW	722

ASA# 4288568 | BIRTHDATE: 2/16/23

CONNEALY JUDGMENT
KG JUSTIFIED 3023
 KG MISS MAGIC 1443
 GIBBS 3009A ELEMENT
MISS PRICKLY PEAR 149J
 MISS PRICKLY PEAR 856F

CE	BW	WW	YW	ADG	MCE	MILK	MWW	STAY	DOC	CW	YG	MARB	BF	REA	API	TI
13	-.5	81	128	.30	8	29	69	15	13.3	42.0	-.03	.60	-.008	.45	145	88

307L weaned off her 2 year old dam at 708 pounds. She has a very well balanced set of EPDs.

AI Sire: LCDR Progressive 106G | Date: 5/15/24 | Due Date: 2/22/25

Est Plan Mating EPDs: 16 -1.9 86 135 .31 8 29 72 15 13.4

Carcass: 46.5 -.16 .59 -.03 .71 161 95



LOT 51

52

MISS PRICKLY PEAR 341L

Homo Black Homo Polled 3/4 SM 1/4 AN Cow | Tattoo: 341L

Adj BW	78
Adj WW	593
Adj YW	788

ASA# 4288615 | BIRTHDATE: 2/28/23

CCR COWBOY CUT 5048Z
TJ ROOSEVELT 366E
 TJ 99A
 HOOK'S BLACK HAWK 50B
MISS PRICKLY PEAR 926G
 MISS PRICKLY PEAR 700E

CE	BW	WW	YW	ADG	MCE	MILK	MWW	STAY	DOC	CW	YG	MARB	BF	REA	API	TI
13	.5	85	136	.32	8	24	66	19	16.6	41.1	-.25	.28	-.041	.86	141	84

341L ranks in the top 20% of the breed for Weaning and Yearling Weight.

AI Sire: LCDR Progressive 106G | Date: 5/14/24 | Due Date: 2/21/25

Est Plan Mating EPDs: 16 -1.4 88 138 .32 9 26 71 17 15.1

Carcass: 46.0 -.27 .43 -.05 .91 165 96



LOT 52

53

MISS PRICKLY PEAR 360L

Homo Black Homo Polled 3/4 SM 1/4 AN Cow | Tattoo: 360L

Adj BW	79
Adj WW	598
Adj YW	728

ASA# 4288643 | BIRTHDATE: 3/2/23

LCDR IMPACT 134F
CDI MAJOR IMPACT 280H
 CDI MISS RIMROCK 55E
 KM BROKEN BOW 002
MISS PRICKLY PEAR 906G
 MISS PRICKLY PEAR 734E

CE	BW	WW	YW	ADG	MCE	MILK	MWW	STAY	DOC	CW	YG	MARB	BF	REA	API	TI
14	-.5	81	125	.27	10	25	65	14	13.7	46.8	-.32	.33	-.048	1.11	135	84

360L ranks in the top 4% breed for Ribeye Area.

AI Sire: KBHR Bold Ruler H152 | Date: 5/14/24 | Due Date: 2/21/25

Est Plan Mating EPDs: 16 -1.7 82 130 .30 11 24 65 16 16.5

Carcass: 42.2 -.25 .58 -.05 .83 168 95



LOT 53

54

MISS PRICKLY PEAR 339L

Black Homo Polled 3/4 SM 1/4 AN Cow | Tattoo: 339L

Adj BW	78
Adj WW	599
Adj YW	695

ASA# 4288689
 BIRTHDATE: 2/27/23

LCDR IMPACT 134F
CDI MAJOR IMPACT 280H
 CDI MISS RIMROCK 55E
 LEACHMAN PAYGRADE 8517
MISS PRICKLY PEAR H007
 MISS PRICKLY PEAR Y120

CE	BW	WW	YW	ADG	MCE	MILK	MWW	STAY	DOC	CW	YG	MARB	BF	REA	API	TI
14	.2	74	108	.22	8	28	63	17	12.4	35.9	-.28	.22	-.038	.91	129	76

This heifers grand dam has a weaning ratio of 101 on 9 calves.

AI Sire: Schooley Standout 27G | Date: 5/14/24 | Due Date: 2/21/25

Est Plan Mating EPDs: 14 -1.0 69 97 .18 8 22 56 17 15.9

Carcass: 25.5 -.23 .34 -.04 .60 143 79



LOT 55

55

MISS PRICKLY PEAR 385L

Black Polled 1/2 SM 1/2 AN Cow | Tattoo: 385L

ASA# 4288638

BIRTHDATE: 3/11/23

CE	BW	WW	YW	ADG	MCE	MILK	MWW	STAY	DOC	CW	YG	MARB	BF	REA	API	TI
8	2.3	84	134	.31	7	31	72	17	13.1	39.1	-.11	.34	-.022	.56	130	82

385L has a Weaning Ratio of 110 against 110 contemporaries.

BASIN RAINMAKER 2704

BASIN RAINMAKER 4404

BASIN JOY 1036

KBHR MONTANA JOURNEY B122

MISS PRICKLY PEAR E756

MISS PRICKLY PEAR 387A

Adj BW **96**

Adj WW **689**

Adj YW **801**

AI Sire: **KBHR Bold Ruler H152** | Date: 5/14/24 | Due Date: 2/21/25

Est Plan Mating EPDs: 13 -.3 83 135 .32 9 27 69 18 16.2

Carcass: 38.3 -.15 .58 -.04 .55 162 93



LOT 56

56

MISS PRICKLY PEAR 375L

Black Homo Polled 1/2 SM 1/2 AN Cow | Tattoo: 375L

Adj BW **69**

Adj WW **600**

Adj YW **779**

ASA# 4288573 | BIRTHDATE: 3/6/23

BASIN RAINMAKER 2704

BASIN RAINMAKER 4404

BASIN JOY 1036

PPSR SHEAR POWER 54U

MISS PRICKLY PEAR X08

NLC T286 TAMRA

CE	BW	WW	YW	ADG	MCE	MILK	MWW	STAY	DOC	CW	YG	MARB	BF	REA	API	TI
17	-2.2	70	110	.25	11	31	65	16	1.7	44.8	-.21	.15	-.030	.87	132	75

Here's the last daughter out of X08 that had a weaning ratio of 102 on 11 calves. 375L ranks in the top 4% of the breed for Maternal Calving Ease.

AI Sire: **LCDR Progressive 106G** | Date: 5/14/24 | Due Date: 2/21/25

Est Plan Mating EPDs: 18 -2.7 81 125 .28 10 30 70 16 12.1

Carcass: 47.9 -.25 .37 -.05 .92 157 90



LOT 57

57

MISS PRICKLY PEAR 353L

Black Polled 1/2 SM 1/2 AN Cow | Tattoo: 353L

Adj BW **84**

Adj WW **660**

Adj YW **795**

ASA# 4288806 | BIRTHDATE: 3/2/23

BASIN RAINMAKER 2704

BASIN RAINMAKER 4404

BASIN JOY 1036

RCR WRANGLER S215

MISS PRICKLY PEAR 383A

MISS PRICKLY PEAR 021K

CE	BW	WW	YW	ADG	MCE	MILK	MWW	STAY	DOC	CW	YG	MARB	BF	REA	API	TI
9	.8	78	123	.28	7	34	72	18	13.6	41.5	-.15	.37	-.023	.70	135	81

This heifer's dam ratioed 105 on 9 calves. She ranks in the top 2% of the breed for Milk.

AI Sire: **Hanel Courtland K2076** | Date: 5/25/24 | Due Date: 3/4/25

Est Plan Mating EPDs: 12 0.1 79 122 .27 7 28 67 17 13.3

Carcass: 36.9 -.18 .29 -.03 .67 138 81



LOT 58

58

MISS PRICKLY PEAR 345L

Black Polled 1/4 SM 3/4 AN Cow | Tattoo: 345L

ASA# 4288556

BIRTHDATE: 3/1/23

BASIN RAINMAKER 2704
BASIN RAINMAKER 4404
 BASIN JOY 1036
 LEACHMAN INVESTMENT 7599
MISS PRICKLY PEAR G914
 MISS PRICKLY PEAR 634D

CE	BW	WW	YW	ADG	MCE	MILK	MWW	STAY	DOC	CW	YG	MARB	BF	REA	API	TI
14	-.5	77	120	.27	9	30	68	16	13.7	47.2	.08	.46	.020	.39	137	81

Adj BW	82
Adj WW	639
Adj YW	792

345L ratioed 102 at weaning with 110 contemporaries. Also ratioed 103 at Yearling with 108 contemporaries.

AI Sire: Schooley Standout 27G | Date: 5/14/24 | Due Date: 2/21/25

Est Plan Mating EPDs: 14 -1.4 70 103 .20 9 23 58 16 16.6

Carcass: 31.2 -.05 .46 -.01 .34 142 80

59

MISS PRICKLY PEAR 333L

Black Homo Polled 1/2 SM 1/2 AN Cow | Tattoo: 333L

ASA# 4288771 | BIRTHDATE: 2/26/23

BASIN RAINMAKER 2704
BASIN RAINMAKER 4404
 BASIN JOY 1036
 PPSR MONTANA KING 81Y
MISS PRICKLY PEAR A304
 MISS PRICKLY PEAR 419P

Adj BW	87
Adj WW	672
Adj YW	772

CE	BW	WW	YW	ADG	MCE	MILK	MWW	STAY	DOC	CW	YG	MARB	BF	REA	API	TI
12	1.2	79	125	.28	9	33	72	16	12.4	47.1	-.13	.23	-.036	.60	127	78

Ranks in the top 3% for Milk. Her dam has Weaning Ratio of 108 on 10 calves with a calving interval of 363 days.

AI Sire: Schooley Standout 27G | Date: 5/15/24 | Due Date: 2/22/25

Est Plan Mating EPDs: 13 -.5 72 105 .21 8 25 60 16 15.9

Carcass: 31.1 -.15 .35 -.04 .45 140 79



LOT 59

60

MISS PREDICTABLE 379L

Black Polled 1/2 SM 1/2 AN Cow | Tattoo: 379L

ASA# 4288796 | BIRTHDATE: 3/8/23

G A R SURE FIRE
M4 PREDICTABLE 956G
 KSU MISS SHEAR FORCE 6Z
 CONNEALY COMRADE 1385
MISS PRICKLY PEAR 727E
 MISS PRICKLY PEAR 830U

Adj BW	105
Adj WW	700
Adj YW	809

CE	BW	WW	YW	ADG	MCE	MILK	MWW	STAY	DOC	CW	YG	MARB	BF	REA	API	TI
10	2.9	80	124	.28	4	31	70	18	12.5	45.9	-.15	.49	-.024	.76	139	82

379L ranks in the top 10% of the breed for Maternal Milk.

AI Sire: Schooley Standout 27G | Date: 5/14/24 | Due Date: 2/21/25

Est Plan Mating EPDs: 12 .4 72 105 .21 6 23 59 17 16.0

Carcass: 30.5 -.16 .48 -.03 .53 146 81



LOT 60



M4 PREDICTABLE 956G, SIRE

61

MISS PRICKLY PEAR 359L

Black Polled 1/2 SM 1/2 AN Cow | Tattoo: 359L

Adj BW	96
Adj WW	655
Adj YW	798

ASA# 4288802 | BIRTHDATE: 3/2/23

G A R SURE FIRE

M4 PREDICTABLE 956G

KSU MISS SHEAR FORCE 6Z

MILL BAR HICKOK 724Z

MISS PRICKLY PEAR 838F

MISS PRICKLY PEAR 236Z

CE	BW	WW	YW	ADG	MCE	MILK	MWW	STAY	DOC	CW	YG	MARB	BF	REA	API	TI
14	1.2	82	126	.27	6	28	69	19	12.0	42.7	-19	.44	-.031	.79	148	85

This Predictable heifer ratio 104 at weaning and yearling against 108 contemporaries.

AI Sire: Hanel Courtland K2076 | Date: 5/19/24 | Due Approx: 2/25/25-3/1/25

Est Plan Mating EPDs: 14 0.3 81 123 .26 7 24 65 18 12.5

Carcass: 37.5 -.02 .33 -.03 .71 145 83

62

MISS PRICKLY PEAR 352L

Homo Black Polled 1/2 SM 1/2 AN Cow | Tattoo: 352L

Adj BW	95
Adj WW	721
Adj YW	766

ASA# 4288600 | BIRTHDATE: 3/2/23

G A R SURE FIRE

M4 PREDICTABLE 956G

KSU MISS SHEAR FORCE 6Z

WERNER FLAT TOP 4136

MISS PRICKLY PEAR 908G

MISS PRICKLY PEAR 460B

CE	BW	WW	YW	ADG	MCE	MILK	MWW	STAY	DOC	CW	YG	MARB	BF	REA	API	TI
15	.7	84	130	.29	7	37	79	19	11.0	49.0	-.23	.58	-.042	.91	158	92

352L ratioed 115 at weaning against 110 contemporaries. Weaning off the cow at 842 pounds,

AI Sire: Schooley Standout 27G | Date: 5/14/24 | Due Date: 2/21/25

Est Plan Mating EPDs: 14 -.8 74 108 .21 7 27 64 18 15.2

Carcass: 32.1 -.20 .52 -.04 .60 155 86

63

MISS PRICKLY PEAR 319L

Black Polled 3/8 SM 5/8 AN Cow | Tattoo: 319L

Adj BW	87
Adj WW	622
Adj YW	779

ASA# 4288779 | BIRTHDATE: 2/21/23

G A R SURE FIRE

M4 PREDICTABLE 956G

KSU MISS SHEAR FORCE 6Z

LEACHMAN PAYGRADE 8517

MISS PRICKLY PEAR J127

MISS PRICKLY PEAR 172Y

CE	BW	WW	YW	ADG	MCE	MILK	MWW	STAY	DOC	CW	YG	MARB	BF	REA	API	TI
13	.6	73	118	.28	6	31	66	16	1.9	45.6	.01	.64	.000	.46	145	83

319L ranks in the top 15% of the breed for IMF.

AI Sire: Schooley Standout 27G | Date: 5/14/24 | Due Date: 2/21/25

Est Plan Mating EPDs: 14 -.8 69 102 .21 7 24 57 16 15.2

Carcass: 30.4 -.08 .55 -.02 .38 148 82

64

MISS PRICKLY PEAR 340L

Homo Black Homo Polled 5/8 SM 3/8 AN Cow | Tattoo: 340L

Adj BW	91
Adj WW	618
Adj YW	773

ASA# 4288603 | BIRTHDATE: 2/27/23

LEACHMAN PROPHET J030Z

SOUTHERN FORTUNE TELLER

GW MISS PREM BEEF 246Z

HOOK'S FRONTLINE 40F

MISS PRICKLY PEAR 101J

MISS PRICKLY PEAR 967G

CE	BW	WW	YW	ADG	MCE	MILK	MWW	STAY	DOC	CW	YG	MARB	BF	REA	API	TI
14	-1.3	75	121	.29	7	27	65	15	13.2	42.4	-.20	.71	-.024	.85	158	91

340L is a deep bodied heifer with a big spring of rib.

AI Sire: Schooley Standout 27G | Date: 5/14/24 | Due Date: 2/21/25

Est Plan Mating EPDs: 14 -1.8 70 103 .21 7 22 56 16 16.3

Carcass: 28.8 -.19 .59 -.03 .57 156 86



SOUTHERN FORTUNE TELLER, SIRE





LOT 65

65

MISS PRICKLY PEAR 321L

Black Polled 5/8 SM 3/8 AN Cow | Tattoo: 321L

ASA# 4288608

BIRTHDATE: 2/21/23

LEACHMAN PROPHET J030Z
SOUTHERN FORTUNE TELLER
GW MISS PREM BEEF 246Z
SHSF FREIGHTLINER D10
MISS PRICKLY PEAR 168J
MISS PRICKLY PEAR 976W

CE	BW	WW	YW	ADG	MCE	MILK	MWW	STAY	DOC	CW	YG	MARB	BF	REA	API	TI
11	.9	83	136	.33	5	23	64	12	12.2	48.8	-.25	.62	-.041	.98	141	90

321L ranks in the top 10% breed for Ribeye Area.

Adj BW	87
Adj WW	621
Adj YW	779

AI Sire: LCDR Progressive 106G | Date: 5/14/24 | Due Date: 2/21/25

Est Plan Mating EPDs: 15 -1.2 87 138 .32 7 26 69 14 12.9

Carcass: 49.9 -.27 .60 -.05 .97 161 97

66

MISS PRICKLY PEAR 315L

Black Polled 1/2 SM 1/2 AN Cow | Tattoo: 315L

ASA# 4288773 | BIRTHDATE: 2/19/23

LEACHMAN PROPHET J030Z
SOUTHERN FORTUNE TELLER
GW MISS PREM BEEF 246Z
LEACHMAN PAYGRADE 8517
MISS PRICKLY PEAR J118
MISS PRICKLY PEAR Y122

Adj BW	90
Adj WW	657
Adj YW	817

CE	BW	WW	YW	ADG	MCE	MILK	MWW	STAY	DOC	CW	YG	MARB	BF	REA	API	TI
12	1.0	81	131	.32	5	31	70	13	12.2	51.4	-.12	.67	-.021	.74	146	90

315L ratioed 104 at weaning and 106 at yearling against 108 contemporaries.

AI Sire: KBHR Bold Ruler H152 | Date: 5/14/24 | Due Date: 2/21/25

Est Plan Mating EPDs: 15 -1.0 82 134 .33 9 28 67 15 15.7

Carcass: 44.5 -.15 .75 -.04 .64 170 97



LOT 66

67

MISS PRICKLY PEAR 310L

Black Polled 1/2 SM 1/2 AN Cow | Tattoo: 310L

ASA# 4288564 | BIRTHDATE: 2/17/23

LEACHMAN PROPHET J030Z
SOUTHERN FORTUNE TELLER
GW MISS PREM BEEF 246Z
SYDGEN ENHANCE
MISS PRICKLY PEAR 147J
MISS PRICKLY PEAR 227Z

Adj BW	79
Adj WW	610
Adj YW	748

CE	BW	WW	YW	ADG	MCE	MILK	MWW	STAY	DOC	CW	YG	MARB	BF	REA	API	TI
14	-1.8	74	127	.34	7	26	64	15	14.0	44.4	-.17	.72	-.031	.73	159	91

310L ranks in the top 15% of the breed for API.

AI Sire: LCDR Progressive 106G | Date: 5/14/24 | Due Date: 2/21/25

Est Plan Mating EPDs: 16 -2.5 83 134 .33 8 28 69 15 13.8

Carcass: 47.7 -.23 .65 -.05 .85 169 97

68

MISS PRICKLY PEAR 301L

Black Polled 5/8 SM 3/8 AN Cow | Tattoo: 301L

ASA# 4288571 | BIRTHDATE: 2/11/23

LEACHMAN PROPHET J030Z
SOUTHERN FORTUNE TELLER
GW MISS PREM BEEF 246Z
GIBBS 3009A ELEMENT
MISS PRICKLY PEAR 179J
MISS PRICKLY PEAR F80S

Adj BW	70
Adj WW	593
Adj YW	728

CE	BW	WW	YW	ADG	MCE	MILK	MWW	STAY	DOC	CW	YG	MARB	BF	REA	API	TI
15	-2.1	72	115	.27	8	26	62	14	12.7	43.4	-.24	.65	-.045	.84	153	89

301L ranks in the top 15% of the breed for Marbling.

AI Sire: LCDR Progressive 106G | Date: 5/14/24 | Due Date: 2/21/25

Est Plan Mating EPDs: 17 -2.7 82 128 .29 9 28 68 15 13.1

Carcass: 47.2 -.27 .62 -.05 .90 169 97



LOT 69

69

MISS PRICKLY PEAR 356L

Hetero Black Polled 1/2 SM 1/2 AN Cow | Tattoo: 356L

ASA# 4288592

BIRTHDATE: 3/2/23

CE	BW	WW	YW	ADG	MCE	MILK	MWW	STAY	DOC	CW	YG	MARB	BF	REA	API	TI
12	-.3	93	149	.35	7	24	72	14	16.6	52.4	-.12	.59	-.024	.73	151	97

356L ranks in the top 5% of the breed for Yearling Weight and top 10% for Weaning Weight.

Adj BW **98**

Adj WW **683**

Adj YW **866**

CONNEALY COMRADE 1385

KESSLERS COMMODORE 6516

KESSLERS RAINBOW 0595

CDI ACE 223B

MISS PRICKLY PEAR 620D

MISS PRICKLY PEAR 702T

AI Sire: M4 Predictable 956G | Date: 5/14/24 | Due Date: 2/21/25

Est Plan Mating EPDs: 15 -.7 85 133 .31 7 28 70 16 13.5

Carcass: 50.4 -.15 .62 -.03 .76 158 93



LOT 70

70

MISS PRICKLY PEAR 344L

Black Polled 1/2 SM 1/2 AN Cow | Tattoo: 344L

Adj BW **87**

Adj WW **649**

Adj YW **777**

ASA# 4288720 | BIRTHDATE: 3/1/23

CONNEALY COMRADE 1385

KESSLERS COMMODORE 6516

KESSLERS RAINBOW 0595

PPSR DOUBLE THE BEEF 29W

MISS PRICKLY PEAR Y104

MISS PRICKLY PEAR 6503S

CE	BW	WW	YW	ADG	MCE	MILK	MWW	STAY	DOC	CW	YG	MARB	BF	REA	API	TI
14	.1	85	134	.31	9	33	75	15	12.3	41.7	-.05	.43	-.020	.40	140	88

This heifer's dam has a Weaning Ratio of 105 on 12 calves with a calving interval of 366 days.

AI Sire: Schooley Standout 27G | Date: 5/14/24 | Due Date: 2/21/25

Est Plan Mating EPDs: 14 -1.1 74 110 .22 8 24 62 15 15.9

Carcass: 28.4 -.11 .45 -.03 .35 147 84

TFS DUE NORTH 2659Z, SIRE



71

RKNWHRT MS DUE NORTH 322L

Homo Black Homo Polled 5/8 SM 3/8 AN Cow | Tattoo: 322L

Adj BW **82**

Adj WW **633**

Adj YW **753**

ASA# 4291722 | BIRTHDATE: 2/21/23

HOOKS SHEAR FORCE 38K

TFS DUE NORTH 2659Z

TFS 1/4 SM 3/4 AN 8419T

HL JUDGE 4G

RKNWHRT IDEAL 194J

RKNWHRT COMRADE 701E

CE	BW	WW	YW	ADG	MCE	MILK	MWW	STAY	DOC	CW	YG	MARB	BF	REA	API	TI
15	-1.4	68	108	.25	8	27	61	17	17.1	24.4	-.09	.58	.010	.56	151	83

322L had a Weaning Ratio of 103 at 633 pounds off a first calf heifer.

AI Sire: Schooley Standout 27G | Date: 5/14/24 | Due Date: 2/21/25

Est Plan Mating EPDs: 15 -1.8 66 97 .19 8 22 55 16 18.3

Carcass: 19.8 -.13 .52 -.02 .43 152 82



LOT 72

72

MISS PRICKLY PEAR 332L

Black Homo Polled 5/8 SM 3/8 AN Cow | Tattoo: 332L

ASA# 4288768

BIRTHDATE: 2/26/23

CE	BW	WW	YW	ADG	MCE	MILK	MWW	STAY	DOC	CW	YG	MARB	BF	REA	API	TI
16	-2.2	75	124	.31	10	27	65	18	15.4	34.6	-.12	.51	-.014	.61	157	87

332L ranks in the top 15% of the breed for API.

Adj BW	72
Adj WW	635
Adj YW	786

HOOKS SHEAR FORCE 38K

TFS DUE NORTH 2659Z

TFS 1/4 SM 3/4 AN 8419T

SYDGEN ENHANCE

MISS PRICKLY PEAR 070H

MISS PRICKLY PEAR A304

AI Sire: LCDR Progressive 106G | Date: 5/16/24 | Due Date: 2/23/25

Est Plan Mating EPDs: 17 -2.7 83 133 .31 10 28 70 17 14.5

Carcass: 42.8 -.21 .55 -.04 .79 170 96

73

MISS PRICKLY PEAR 311L

Black Homo Polled 5/8 SM 3/8 AN Cow | Tattoo: 311L

ASA# 4288616 | BIRTHDATE: 2/17/23

HOOKS SHEAR FORCE 38K

TFS DUE NORTH 2659Z

TFS 1/4 SM 3/4 AN 8419T

LEACHMAN INVESTMENT 7599

MISS PRICKLY PEAR J103

MISS PRICKLY PEAR 229Z

Adj BW	77
Adj WW	637
Adj YW	775

CE	BW	WW	YW	ADG	MCE	MILK	MWW	STAY	DOC	CW	YG	MARB	BF	REA	API	TI
17	-1.9	70	109	.25	10	26	62	18	15.1	27.7	-.05	.42	.011	.49	148	80

311L ranks in the top 10% of the breed for Maternal Calving Ease and top 15% Calving Ease.

AI Sire: LCDR Progressive 106G | Date: 5/14/24 | Due Date: 2/21/25

Est Plan Mating EPDs: 18 -2.6 81 125 .28 10 28 68 17 14.3

Carcass: 39.3 -.27 .50 -.03 .73 166 93



LOT 73

74

MISS PRICKLY PEAR 338L

Black Polled 1/4 SM 3/4 AN Cow | Tattoo: 338L

ASA# 4288698 | BIRTHDATE: 2/27/23

TEHAMA UPWARD Y238

TEHAMA TAHOE B767

TEHAMA MARY BLACKBIRD Y684

BLEVINS THUNDER 6965

MISS PRICKLY PEAR G929

MISS PRICKLY PEAR 851U

Adj BW	75
Adj WW	566
Adj YW	715

CE	BW	WW	YW	ADG	MCE	MILK	MWW	STAY	DOC	CW	YG	MARB	BF	REA	API	TI
14	-1.8	72	116	.28	7	26	62	18	11.2	35.5	.04	.54	-.001	.22	148	82

AI Sire: LCDR Progressive 106G | Date: 5/14/24 | Due Date: 2/21/25

Est Plan Mating EPDs: 16 -2.5 81 128 .30 8 27 68 17 12.4

Carcass: 43.2 -.13 .56 -.03 .59 161 92

75

MISS PRICKLY PEAR 363L

Black Polled 3/4 SM 1/4 AN Cow | Tattoo: 363L

ASA# 4288744 | BIRTHDATE: 3/3/23

WS PROCLAMATION E202

KBHR BOLD RULER H152

BAR CK MS X38 106Z

HOOK'S EAGLE 6E

MISS PRICKLY PEAR 069H

MISS PRICKLY PEAR 995W

Adj BW	68
Adj WW	587
Adj YW	686

CE	BW	WW	YW	ADG	MCE	MILK	MWW	STAY	DOC	CW	YG	MARB	BF	REA	API	TI
17	-3.4	73	117	.28	11	23	60	17	16.8	3.7	-.24	.65	-.047	.65	165	91

363L ranks in the top 10% of the breed for Birth Weight and Maternal Calving Ease.

AI Sire: Tehama Patriarch F028 | Date: 5/14/24 | Due Date: 2/21/25

Est Plan Mating EPDs: 18 -3.7 79 136 .36 12 27 67 14 15.0

Carcass: 45.7 -.05 .74 .00 .60 167 95



LOT 76

76

MISS PRICKLY PEAR 346L

Homo Black Homo Polled 5/8 SM 3/8 AN Cow | Tattoo: 346L

ASA# 4288660

BIRTHDATE: 3/1/23

CE	BW	WW	YW	ADG	MCE	MILK	MWW	STAY	DOC	CW	YG	MARB	BF	REA	API	TI
10	2.5	87	146	.37	4	17	61	20	1.9	42.1	-.12	.40	-.029	.58	144	84

346L ratios 110 at weaning. She ranks in the top 4% of the breed for ADG and top 10% of the breed for Yearling Weight.

Adj BW	96
Adj WW	691
Adj YW	884

GW-WBF SUBSTANCE 820Y
HOOK'S BALTIC 17B
 HOOK'S SARITA 92Y
 BLEVINS HEISMAN ANSWER 7526
MISS PRICKLY PEAR 994G
 MISS PRICKLY PEAR 531C

AI Sire: **LCDR Progressive 106G** | Date: 5/13/24 | Due Date: 2/20/25

Est Plan Mating EPDs: 14 -.4 89 143 .34 7 23 68 18 12.2

Carcass: 46.5 -.21 .49 -.05 .77 162 94

77

MISS PRICKLY PEAR 395L

Black Polled Purebred SM Cow | Tattoo: 395L

ASA# 4288649 | BIRTHDATE: 3/16/23

SFG THE JUDGE D633

HL JUDGE 4G

IR MS LAUSANNE W139

HOOK'S BLACK HAWK 50B

MISS PRICKLY PEAR 948G

MISS PRICKLY PEAR E756

Adj BW	86
Adj WW	615
Adj YW	719

CE	BW	WW	YW	ADG	MCE	MILK	MWW	STAY	DOC	CW	YG	MARB	BF	REA	API	TI
11	.5	72	111	.24	7	26	62	17	14.0	29.1	-.32	.34	-.047	.90	144	82

Grandam is dam to 385L in the sale.

AI Sire: **Tehama Patriarch F028** | Date: 5/14/24 | Due Date: 2/21/25

Est Plan Mating EPDs: 15 -1.8 78 133 .34 11 28 68 14 13.6

Carcass: 44.9 -.09 .58 .00 .73 151 89

78

MISS PRICKLY PEAR 394L

Black Polled Purebred SM Cow | Tattoo: 394L

ASA# 4288776 | BIRTHDATE: 3/15/23

GIBBS 0689X CRIMSON TIDE

GIBBS 2698Z BIG JOHN

CIRCLE B MISS DREAM

KOCH LC MONTE 803U

MISS PRICKLY PEAR 853F

MISS PRICKLY PEAR 430B

Adj BW	105
Adj WW	720
Adj YW	873

CE	BW	WW	YW	ADG	MCE	MILK	MWW	STAY	DOC	CW	YG	MARB	BF	REA	API	TI
6	5.0	92	143	.32	3	23	69	15	11.8	45.0	-.37	.13	-.082	.98	122	82

A Big John daughter that is made for performance. She ratioed 114 with 110 contemporaries.

AI Sire: **KBHR Bold Ruler H152** | Date: 5/14/24 | Due Date: 2/21/25

Est Plan Mating EPDs: 12 1.1 88 139 .33 8 23 67 16 15.5

Carcass: 41.3 -.28 .48 -.07 .76 157 93

79

MISS PRICKLY PEAR 364L

Black Polled 3/4 SM 1/4 AN Cow | Tattoo: 364L

ASA# 4288715 | BIRTHDATE: 3/3/23

KAPPE TRAILBLAZER S516

ELLINGSON BLAZER X37

ELLINGSON MS MR MT R562

BLEVINS HEISMAN ANSWER 7526

MISS PRICKLY PEAR G941

MISS PRICKLY PEAR 624D

Adj BW	76
Adj WW	641
Adj YW	776

CE	BW	WW	YW	ADG	MCE	MILK	MWW	STAY	DOC	CW	YG	MARB	BF	REA	API	TI
16	-1.9	71	108	.23	7	27	62	14	7.0	41.1	-.28	.01	-.078	.67	118	72

The Blazer daughters have been some of our top producer. She ranks the top 15% of the breed for Calving Ease.

AI Sire: **Schooley Standout 27G** | Date: 5/14/24 | Due Date: 2/21/25

Est Plan Mating EPDs: 15 -2.1 68 97 .18 7 22 55 15 13.2

Carcass: 28.1 -.23 .24 -.06 .48 140 78



LOT 79



80

MISS PRICKLY PEAR 316L

Black Polled 5/8 SM 3/8 AN Cow | Tattoo: 316L

ASA# 4288640

BIRTHDATE: 2/20/23

G A R SURE FIRE

EGL FIREMAN 111F

TJ 22X

HOOK'S EAGLE 6E

MISS PRICKLY PEAR 127J

MISS PRICKLY PEAR 356A

CE	BW	WW	YW	ADG	MCE	MILK	MWW	STAY	DOC	CW	YG	MARB	BF	REA	API	TI
18	-4.1	63	104	.25	8	24	55	18	14.2	25.7	-.33	.63	-.049	.86	164	86

Adj BW **66**

Adj WW **507**

Adj YW **650**

Smaller framed heifer that ranks in the top 4% of the breed for Birth Weight and top 10% of the breed for Calving Ease.

AI Sire: LCDR Progressive 106G | Date: 5/14/24 | Due Date: 2/21/25

Est Plan Mating EPDs: 18 -3.7 77 122 .28 9 27 65 17 13.9

Carcass: 38.3 -.31 .61 -.06 .91 174 96

81

MISS PRICKLY PEAR 358L

Homo Black Homo Polled 3/4 SM 1/4 AN Cow | Tattoo: 358L

ASA# 4288566 | BIRTHDATE: 3/2/23

ELLINGSON LEGACY M229

DKSR MR OLIE X4

SRS U101

LEACHMAN INVESTMENT 7599

MISS PRICKLY PEAR G906

MISS PRICKLY PEAR C525

Adj BW	83
Adj WW	601
Adj YW	695

CE	BW	WW	YW	ADG	MCE	MILK	MWW	STAY	DOC	CW	YG	MARB	BF	REA	API	TI
12	1.6	71	111	.25	6	28	64	19	11.3	31.7	-.32	.20	-.065	.77	127	72

This heifer's dam ratioed 102 on 4 calves.

AI Sire: KBHR Bold Ruler H152 | Date: 5/14/24 | Due Date: 2/21/25

Est Plan Mating EPDs: 15 -.7 77 123 .29 9 26 65 18 15.3

Carcass: 34.6 -.25 .51 -.06 .66 165 90



LOT 81

82

MISS PRICKLY PEAR 303L

Homo Black Homo Polled 5/8 SM 3/8 AN Cow | Tattoo: 303L

ASA# 4288577 | BIRTHDATE: 2/14/23

T C A VISIONARY 158

EGL GREAT WESTERN 87G

TJ 22X

HOOK'S EAGLE 6E

MISS PRICKLY PEAR 118J

MISS PRICKLY PEAR 925G

Adj BW	72
Adj WW	558
Adj YW	703

CE	BW	WW	YW	ADG	MCE	MILK	MWW	STAY	DOC	CW	YG	MARB	BF	REA	API	TI
16	-3.2	70	114	.27	8	23	59	17	13.7	28.0	-.28	.56	-.035	.84	156	86

303L ranks in the top 25% of the breed for Ribeye Area and IMF.

AI Sire: Schooley Standout 27G | Date: 5/14/24 | Due Date: 2/21/25

Est Plan Mating EPDs: 15 -2.7 67 100 .20 8 20 53 16 16.6

Carcass: 21.6 -.23 .51 -.04 .57 156 84

EGL GREAT WESTERN 87G, SIRE





3H SIMMENTAL RANCH • AL HAFNER 503-931-6815

3H Simmental Ranch has been operating for 5 decades, raising Simmental and SimAngus genetics. Our focus is providing quality Simmental bulls to commercial breeders. We purchased our first black females from Prickly Pear Simmental Ranch back in 1996, and they became the foundation for our black herd. Their sons became the first bulls that we sold back in the early 2000's and kicked off our seedstock operation. All of our consignments are bred to PPSR Bold Ruler 5L, who was the high selling bull at Prickly Pear's annual bull sale last spring.



LOT 83

83

3H 651L

Black Polled 1/2 SM 1/2 AN Cow | Tattoo: 3H651L

Adj BW	78
Adj WW	633
Adj YW	N/A

ASA# (4203591) | BIRTHDATE: 2/7/23

CONNEALY CAPITALIST 028

LD CAPITALIST 316

LD DIXIE ERICA 2053

MR HOC BROKER

3H CLEOPATRA 111C

3H YANNA 01Y

CE	BW	WW	YW	ADG	MCE	MILK	MWW	STAY	DOC	CW	YG	MARB	BF	REA	API	TI
12	-.7	81	125	.27	7	24	65	14	13.4	47.5	-.13	.23	-.023	.72	125	80

This Capitalist daughter has been one of our favorites since she was born. She's an incredibly gentle heifer, who is heavily muscled and deep sided, all in a feminine package. She has a very moderate set of EPDs and is in the top third of the breed for birth, weaning and yearling weights.

Pasture Sire: PPSR Bold Ruler 5L | Due Date: Mid Feb

Est Plan Mating EPDs: 15 -.8 90 145 .34 9 26 72 15 15.6

Carcass: 54.9 -.16 .47 -.03 .83 152 93



PPSR Bold Ruler 5L, Pasture Sire



LOT 84

84

3H 663L

Black Polled 1/2 SM 1/2 AN Cow | Tattoo: 3H663L

Adj BW	92
Adj WW	673
Adj YW	N/A

ASA# (4203604) | BIRTHDATE: 2/23/23

G A R ASHLAND

TJ NEBRASKA 258G

TJ 33Y

HA COWBOY UP 5405

3H HOT STUFF 374H

3H ELSA 204E

CE	BW	WW	YW	ADG	MCE	MILK	MWW	STAY	DOC	CW	YG	MARB	BF	REA	API	TI
11	1.9	92	148	.35	5	25	72	13	8.2	46.3	-.13	.44	-.025	.70	135	90

This half-blood Nebraska daughter has brood cow written all over her. She has a ton of top, and is thick made, with a bunch of extension and balance. She is in the top 20% of the breed for weaning and yearling weight and boasts a TI in the top 20%.

Pasture Sire: PPSR Bold Ruler 5L | Due Date: Mid Feb

Est Plan Mating EPDs: 15 .5 96 157 .38 8 26 75 15 13.0

Carcass: 54.3 -.16 .58 -.03 .82 156 97

LOT 85 OUT OF SALE



LOT 86

86

3H 686L

Black Polled 3/4 SM 7/32 AN 1/32 AR Cow | Tattoo: 3H686L

Adj BW	82
Adj WW	670
Adj YW	N/A

ASA# (4203627) | BIRTHDATE: 3/23/23

REDHILL 672X X004 231A

TFS REDHILL 0786H

TFS GOLDENGLOW 1424Y

CCR COWBOY CUT 5048Z

3H FLICKA 255F

3H YANNA 01Y

CE	BW	WW	YW	ADG	MCE	MILK	MWW	STAY	DOC	CW	YG	MARB	BF	REA	API	TI
14	-.8	79	119	.25	8	22	61	19	14.5	25.4	-.38	.42	-.071	.84	149	85

This Cowboy Cut granddaughter checks a lot of boxes. She's got a complete set of EPDs along with a great phenotype. She's thick, with a lot of volume, and has a very angular front end. She's also in the top 10% for stayability EPD and 25% for API.

Pasture Sire: PPSR Bold Ruler 5L | Due Date: Mid Feb

Est Plan Mating EPDs: 16 -.9 89 142 .33 10 25 70 18 16.1

Carcass: 43.9 -.29 .57 -.06 .89 170 98

MLK ANGUS BRED FEMALES



Mark 406-431-0872 • Lynn 406-465-8195

Owned by Mark and Lynn Keller, MLK Angus is a small family seed stock operation located in the Helena Valley right across from Lake Helena. Being small has made it easier to offer quality cattle focusing on foot structure, udders, maternal instinct and temperament. In an effort to promote really good Angus, we strive to be at the forefront of the breed and have cattle that put-on pounds!

We A-I our cows to some of the leading bulls in the country. We try to keep our EPDs strong but well balanced and tend not to chase day-to-day fads. Our cows come from time tested, quality genetics with lineages that include proven sires that reach back to bulls that include Sitz Traveler 8180, Sitz Alliance 6595, DHD Traveler 6807, Sitz Rainmaker 6169, Connealy Onward, Leachman Right Time, and N Bar Emulation EXT. More recently, we have included sires like Basin Jameson, Virginia Tech Statesman, Poss Winchester, Baldridge Flagstone and more, moving toward better feed efficiency and carcass values, while still maintaining the excellent maternal qualities we all aim for. Our dams are proven mothers with excellent maternal instinct that raise exceptional calves. We do not creep feed our pre-weaned calves. They summer in the mountains above Helena, coming straight off grass with bull calves typically having a 205-day adjusted wean weight from 750 to 800 pounds, with some 850 to 900 lbs.

At the end of the day, it is all about pounds and with our genetics, your operation can produce those pounds! You won't be disappointed! Many thanks to Prickly Pear Simmental for allowing us to join their inaugural cow sale along with Val Eberspacher, our family, friends, veterinarians, our A-I and embryo transplant professionals and other great breeders that have helped us along the way!



MLK Angus
Mark & Lynn Keller
2828 Lincoln Rd E
Helena, MT 59602 - 6042



LOT 87

Basin Safe Deposit 3081
Pasture Sire for MLK bred females

Basin Safe Deposit 3081 is a four star calving ease bull. He ranks in the top 10% of the breed for both \$M Index and \$C Index.
AAA Reg # 20679038

87

MLK EVERELDA ENTENSE 315

Purebred AN | Tattoo: 315

Adj BW	67
Adj WW	724
Adj YW	924

AAA# 20771045 | BIRTHDATE: 3/1/23

JVC CAVALRY V3326

MLK CAVALRY 014

COLEMAN LUCY Y145

G A R ASHLAND

MLK EVERELDA ENTENSE 151

MLK EVERELDA ENTENSE 5171

CED	BW	WW	YW	SC	DOC	Milk	CW	MB	RE	SM	SW	SB	SC
10	.2	79	136	1.42	20	25	58	.23	.97	70	79	136	246

This girl is due 3/8/2025 to Basin Safe Deposit 3081. Her dam is in the top 15% in WW and the top 20% in YW.

Pasture Sire: Basin Safe Deposit 3081 | Approx Date: 6/11/24 | Due Date: 3/20/25



LOT 88

88

MLK BLACKBIRD 318

Purebred AN | Tattoo: 318

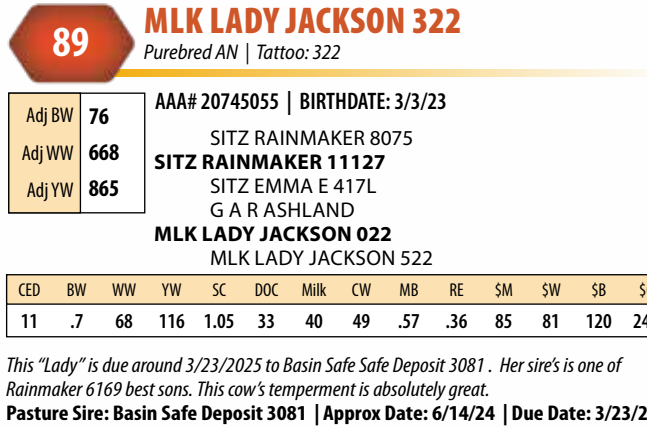
Adj BW **74**
Adj WW **672**
Adj YW **895**

AAA# 20771044 | BIRTHDATE: 3/10/23
JVC CAVALRY V3326
MLK CAVALRY 014
COLEMAN LUCY Y145
CONNELLY SPUR
MLK BLACKBIRD 189
MLK BLACKBIRD 89

CED	BW	WW	YW	SC	DOC	Milk	CW	MB	RE	\$M	\$W	\$B	\$C
6	1.5	70	120	1.58	19	21	39	.46	.20	74	63	112	219

This girl is due 2/21/2025 to Basin Safe Deposit 3081. Her dam is one of our favs with a great temperament and excellent feet scores.

Pasture Sire: Basin Safe Deposit 3081 | Approx Date: 5/15/24 | Due Date: 2/21/25



LOT 89

89

MLK LADY JACKSON 322

Purebred AN | Tattoo: 322

Adj BW **76**
Adj WW **668**
Adj YW **865**

AAA# 20745055 | BIRTHDATE: 3/3/23
SITZ RAINMAKER 8075
SITZ RAINMAKER 11127
SITZ EMMA E 417L
G A R ASHLAND
MLK LADY JACKSON 022
MLK LADY JACKSON 522

CED	BW	WW	YW	SC	DOC	Milk	CW	MB	RE	\$M	\$W	\$B	\$C
11	.7	68	116	1.05	33	40	49	.57	.36	85	81	120	241

This "Lady" is due around 3/23/2025 to Basin Safe Safe Deposit 3081. Her sire's is one of Rainmaker 6169 best sons. This cow's temperament is absolutely great.

Pasture Sire: Basin Safe Deposit 3081 | Approx Date: 6/14/24 | Due Date: 3/23/25



LOT 90

90

MLK TW LADY 316

Purebred AN | Tattoo: 316

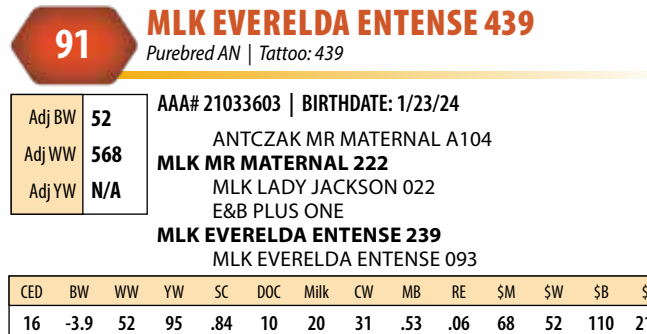
Adj BW **72**
Adj WW **654**
Adj YW **760**

AAA# 20626412 | BIRTHDATE: 3/3/23
N BAR EMULATION EXT
LEACHMAN RIGHT TIME
LEACHMAN ERICA 0025
R R RITO 707
B C C LADY 707 1165-9180
BOHI LADY 1165

CED	BW	WW	YW	SC	DOC	Milk	CW	MB	RE	\$M	\$W	\$B	\$C
8	-.4	27	49	.26	2	21	11	.08	0	50	27	74	146

This ET calf is due around 2/10/2025 to Basin Safe Deposit 3081. Solid older genetics with the sire famous for great daughters. The dam's side goes back to RR Rito 707.

Pasture Sire: Basin Safe Deposit 3081 | Approx Date: 5/4/24 | Due Date: 2/10/25



LOT 91

91

MLK EVERELDA ENTENSE 439

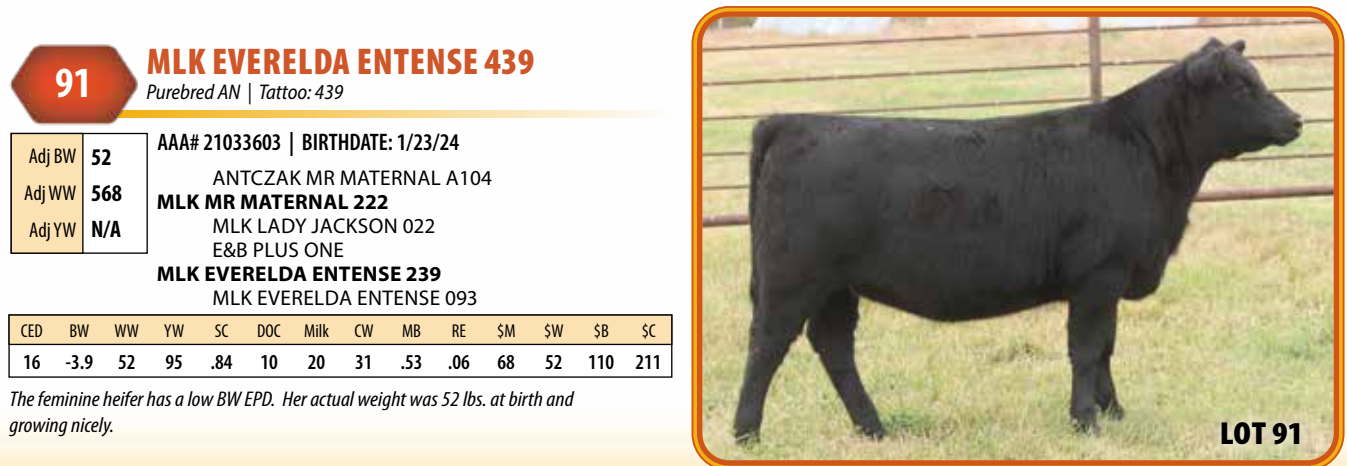
Purebred AN | Tattoo: 439

Adj BW **52**
Adj WW **568**
Adj YW **N/A**

AAA# 21033603 | BIRTHDATE: 1/23/24
ANTCZAK MR MATERNAL A104
MLK MR MATERNAL 222
MLK LADY JACKSON 022
E&B PLUS ONE
MLK EVERELDA ENTENSE 239
MLK EVERELDA ENTENSE 093

CED	BW	WW	YW	SC	DOC	Milk	CW	MB	RE	\$M	\$W	\$B	\$C
16	-3.9	52	95	.84	10	20	31	.53	.06	68	52	110	211

The feminine heifer has a low BW EPD. Her actual weight was 52 lbs. at birth and growing nicely.



MLK ANGUS FANCY HEIFER CALVES



92

MLK EVERELDA ENTENSE 435

Purebred AN | Tattoo: 435

Adj BW	70
Adj WW	652
Adj YW	N/A

AAA# 21048362 | BIRTHDATE: 2/6/24
ANTCZAK MR MATERNAL A104
MLK MR MATERNAL 222
MLK LADY JACKSON 022
GRABERS MR ANGUS 9080
MLK EVERELDA ENTENSE 235
MLK EVERELDA ENTENSE 953

CED	BW	WW	YW	SC	DOC	Milk	CW	MB	RE	\$M	\$W	\$B	\$C
5	-.1	66	100	2.0	20	29	41	.87	.59	74	77	140	256

Well rounded heifer has a good marbling EPD and is in the top 30% of \$M.



94

MLK PRIDE 403

Purebred AN | Tattoo: 403

Adj BW	81
Adj WW	697
Adj YW	N/A

AAA# 21033604 | BIRTHDATE: 2/25/24
DEER VALLEY GROWTH FUND
EXAR STOCK FUND 9097B
EXAR EMPRESS 0875
JINDRA ACCLAIM
MLK PRIDE 037
SITZ PRIDE 374

CED	BW	WW	YW	SC	DOC	Milk	CW	MB	RE	\$M	\$W	\$B	\$C
7	.8	66	119	-.33	25	25	53	.52	.97	58	63	154	258

This calf's grandam was an 11 time Pathfinder. She boasted 13 calves with a weaning ratio of 105 and 12 calves with a yearling ratio of 104.



93

MLK TW DONNA 487

Purebred AN | Tattoo: 487

Adj BW	72
Adj WW	726
Adj YW	N/A

AAA# 21037359 | BIRTHDATE: 2/23/24
CONNELY LEAD ON
CONNELY ONWARD
ALTUNE OF CONANGA 6104
WULFFS EXT 6106
COLEMAN DONNA 6143
KMK DONNA J311

CED	BW	WW	YW	SC	DOC	Milk	CW	MB	RE	\$M	\$W	\$B	\$C
11	.9	52	98	1.25	25	27	32	-.22	.47	88	53	84	197

This girl is an ET calf that goes back to Coleman Angus start and has a great genetic profile.



95

MLK PRIDE 445

Purebred AN | Tattoo: 445

Adj BW	76
Adj WW	667
Adj YW	N/A

AAA# 21041375 | BIRTHDATE: 2/28/24
SITZ DASH 10277
BARSTOW CASH
BARSTOW QUEEN W16
SITZ NEW DESIGN 349M
MLK PRIDE 374
SITZ PRIDE 2322

CED	BW	WW	YW	SC	DOC	Milk	CW	MB	RE	\$M	\$W	\$B	\$C
2	1.9	60	115	1.02	21	25	46	.50	.80	36	51	138	215

This ET calf is out of an 11 time Pathfinder cow with great longevity. Her sire, Barstow Cash brings excellent thickness and muscle mass to his offspring. In addition, this bull gives excellent birth weights and strong growth.



96

MLK DONNA 456

Purebred AN | Tattoo: 456

Adj BW	70
Adj WW	556
Adj YW	N/A

AAA# 21033606 | BIRTHDATE: 3/10/24

JVC CAVALRY V3326

MLK CAVALRY 014

COLEMAN LUCY Y145

CONNEALY ONWARD

MLK TW DONNA 156

COLEMAN DONNA 6143

CED	BW	WW	YW	SC	DOC	Milk	CW	MB	RE	\$M	\$W	\$B	\$C
7	.3	58	106	.06	24	33	43	-.10	.51	79	65	104	214

This is the first calf from a nice ET Cow that goes back to Coleman Angus' start. She is a great mother cow with good feet and a great disposition.

LOT 96

97

MLK ENCHANTRESS 480

Purebred AN | Tattoo: 480

Adj BW	83
Adj WW	632
Adj YW	N/A

AAA# 21016482 | BIRTHDATE: 3/19/24

JVC CAVALRY V3326

MLK CAVALRY 014

COLEMAN LUCY Y145

STEVENSON TEMPLETON 3308

STEVENSON ENCHANTRESS 5221

BASIN ENCHANTRESS U451

CED	BW	WW	YW	SC	DOC	Milk	CW	MB	RE	\$M	\$W	\$B	\$C
6	2.0	78	138	1.26	18	32	58	.23	.31	56	78	121	213

This nice looking heifer is in the top 20% of both WW and YW.



LOT 97

ELITE COMMERCIAL FEMALES

These Commercial Females will make outstanding replacement females for any progressive rancher. Winning bidder has the option to take a group listed in the catalog and may take more groups in numerical order.

Prickly Pear Commercial Heifers

Contact: **Troy Wheeler 406-949-1754**

Our commercial heifers were purchased from three of our long time customers that do not retain heifers. They were hand selected by us for the sole reason to provide some top replacement breds for our customers. There are 26 AI'd for a February 21st due date and seven that are bull bred for a March 15th due date. 4 reds and 29 black and black baldy.

LOTS: 100, 100A, 100B, 100C, 100D, 100E, 100F

7 Head AI Bred – Due February 21, 2025

LOTS: 101, 101A, 101B, 101C, 101D, 101E, 101F

7 Head AI Bred – Due February 21, 2025

LOTS: 102, 102A, 102B, 102C, 102D, 102E, 102F

7 Head AI Bred – Due February 21, 2025

LOTS: 103, 103A, 103B, 103C, 103D

5 Head AI Bred – Due February 21, 2025

LOTS: 104, 104A, 104B, 104C, 104D, 104E, 104F

7 Head Bull Bred – Due March 15, 2025



ELITE COMMERCIAL FEMALES



59 Head of Commercial Bred Heifers from Jim & Jake Fritz

Contact: Jake Fritz 406-289-0869

Jim and Dena Fritz are 5th generation farmer/ranchers who have spent their entire lives involved in agriculture. They run black and red Angus cows northwest of Chester MT and use Simmental cross breeding to produce stout steers and productive females. They are offering 40 heifers bred to high quality, calving ease black or red Angus bulls for February to May calving. As calves, they were vaccinated with Ultra Choice 7, Bovi-Shield Gold One Shot in the spring and fall. They are Bans vaccinated and had a pre-breeding shot of Bovi-Shield Gold FP5 VL 5. Their left shoulder sports a number brand for the year they were born. The Fritz's are sad to watch these fancy first go, but know they will fit into your calving schedule and won't disappoint.

Jake grew up on a farm and ranch northwest of Chester as the 6th generation on the family's farm and ranch. The ranch was homesteaded in 1909 and the love for cattle has grown with each generation, a tradition Jake is thrilled to be passing down to his three sons. Jake moved home and bought an outside herd of cattle in December 2012 and began prioritizing and focusing on herd genetics and health. Over the last 11 years of AI'ing, buying top end bulls and culling hard, he has taken his average steer weaning weights from 540 lbs to 708 lbs. The heifers were born in February and March of 2023 and were summered on short grass at Lake Elwell. They were weaned and culled the first week of October. They wintered on whole oats, straw and pea/oat hay before spending the summer in the Sweetgrass Hills. The heifers were bull bred to Jake's best easy calving bulls coming from Prickly Pear Simmental Ranch, Flesch Angus and Fritz Red Angus. These heifers were not culled due to quality, we are offering these due to calving dates. Due to start calving February 26th for 45 days. These heifers have been vaccinated spring and fall as calves with Ultra-Choice 7 and Bovi-Shield Gold One shot, Bangs vaccinated fall of 2023 and Bovi-Shield Gold FP5 VL5 prior to breeding. They are branded with a number brand of the year they were born on their left shoulder. These heifers are top notch producers, ready to go to their new home.

11 Head of Commercial Bred Heifers

Contact: Bignell Ranch Co 406-529-2933

Bignell Ranch Company has been purchasing Simmental bulls from PPSR for many years. Their genetics have added great value to our breeding program.

80 Head of Black High Quality Replacement Heifers

Contact: Jed Polk 210-382-8537

These replacement heifers will be the top end out of 165 calves. The quality runs deep in this fancy set of heifers as a result of many years of buying top end bulls from some of the best producers in the business. We select bulls that are out of proven cows with high maternal traits. We run in tough environments up to 7500 feet in elevation. Because of this, we cull our herd for any feet or udder issues and expect our cattle to perform problem free throughout the year and in any environment. No creep feed. Heifers are Pre-Con 2 and Bangs vaccinated.

LOTS: 117, 117A, 117B, 117C, 117D, 117E, 117F, 117G, 117H, 117 I - 10 Head

LOTS: 118, 118A, 118B, 118C, 118D, 118E, 118F, 118G, 118H, 118 I - 10 Head

LOTS: 119, 119A, 119B, 119C, 119D, 119E, 119F, 119G, 119H, 119 I - 10 Head

LOTS: 120, 120A, 120B, 120C, 120D, 120E, 120F, 120G, 120H, 120 I - 10 Head

LOTS: 121, 121A, 121B, 121C, 121D, 121E, 121F, 121G, 121H, 121 I - 10 Head

LOTS: 122, 122A, 122B, 122C, 122D, 122E, 122F, 122G, 122H, 122 I - 10 Head

LOTS: 123, 123A, 123B, 123C, 123D, 123E, 123F, 123G, 123H, 123 I - 10 Head

LOTS: 124, 124A, 124B, 124C, 124D, 124E, 124F, 124G, 124H, 124 I - 10 Head

LOTS: 105, 105A, 105B, 105C, 105D

5 Head February - 3 Black, 1 BWF, 1 Red - 1033 lbs.

LOTS: 106, 106A, 106B, 106C, 106D, 106E

6 Head March - Blacks - 1067 lbs.

LOTS: 107, 107A, 107B, 107C, 107D, 107E, 107F

7 Head March - Blacks - 1067 lbs.

LOTS: 108, 108A, 108B, 108C, 108D

5 Head March - Blacks - 1000 lbs.

LOTS: 109, 109A, 109B, 109C, 109D, 109E

6 Head March - Blacks - 1000 lbs.

LOTS: 110, 110A, 110B, 110C

4 Head March - Reds - 1093 lbs.

LOTS: 111, 111A, 111B, 111C, 111D, 111E, 111F, 111G, 111H, 111 I

10 Head April - 9 Blacks, 1 BWF - 1075 lbs.

LOTS: 112, 112A, 112B, 112C, 112D, 112E, 112F, 112G

8 Head April - Blacks - 992 lbs.

LOTS: 113, 113A, 113B

3 Head April - Reds - 1080 lbs.

LOTS: 114, 114A, 114B, 114C, 114D

5 Head May - 3 BWF, 2 Blacks - 1009 lbs.

LOTS: 115, 115A, 115B, 115C, 115D, 115E

6 Head - Black first calf heifers bred to calving ease SimAngus bull - Due mid May to first of June

LOTS: 116, 116A, 116B, 116C, 116D, 116E

5 Head - SimAngus cross females will make great cows



LiveAuctions.TV

TECHNICAL SUPPORT:
682.816.4900
TechSupport@LiveAuctions.tv

New
**SALE
DATE!**

**Join us on Wednesday,
November 13th
in Helena, MT**
Cattle viewing
8:00 am to 12:00 Noon
Lunch 12:00
SALE 1:00 pm MST



Eberspacher Ent. Inc.

2904 County Road 6
Marshall, MN 56258

First Class Mail: Time Dated Material!

FIRST CLASS
MAIL
U.S. POSTAGE
PAID
MN MAIL



PRICKLY PEAR
Simmental Ranch

Big **FEMALE SALE**

WEDNESDAY, NOVEMBER 13TH AT 1:00 PM MST • HELENA, MONTANA