



New this year, all  
successful bidders are  
entered in a drawing for a  
**Gross Five Cattle Cooler**  
to be raffled at the  
conclusion of the sale!

*Annual*

# *BULL SALE*

*Monday, April 8, 2019 - 12:00 Noon*

*Faith Livestock - Faith, SD*

*Selling:*

36 Yearling Registered Angus Bulls

12 Yearling Registered 1-A Red Angus Bulls

Welcome to our annual bull sale. As we look forward to seeing you on sale day, we can't help but be reminded of our many blessings. One of those blessings is getting the opportunity to do something we truly love—raising cattle for a living and getting to share our best genetics with you.

As I write this note, we are dealing with below zero temperatures as many calves are hitting the ground. In the past couple weeks, our bathtub has been a calf tub more than it's been a kid tub. We are all spending countless "extra" hours making sure our calves and mama cows are taken care of the best that we can in even these worst conditions. As hard as this "spring" has been, we pray that this will lead to lots of green grass in the pastures this summer. We know many other ranchers are dealing with these same issues, and our prayers are with you.

As cattlemen and women, we all have goals for our cattle herds. We have two main goals at our ranch: consistency and docility. We continually strive to get the look of consistency in our herd. We work hard toward the goal of eye-appealing, structurally sound, similar looking cattle that produce a quality calf every year. Our second goal is docility throughout our herd. We actively cull for bad temperament throughout our herd bulls, cows, and bull & heifer calves. We expect every animal that's raised on our ranch to be enjoyable to be around. We hope you can enjoy your cows as much as we enjoy ours, and we do our best to give you that opportunity with the seedstock bulls and bred heifers we sell every year.

We truly believe that our bull offering for this sale is our "Best of the best." We have had very high expectations for these bulls since weaning, and even through the active winter, they did not disappoint. Even so, we did have a handful of bulls that didn't make the cut for the sale. We only included bulls in the sale listing that we'd be willing to use and infuse in our own herd.

These bull calves were weaned on October 15, 2018, and from that day to the present, they are being developed on a high-roughage ration provided to us by Jack Sieben of J&R Feeds. We are impressed with how the bulls have grown since day one, and we are confident that these bulls will be in ideal breeding condition when it's time to go and breed cows.

If you get a catalog prior to sale day, we welcome you to come to the ranch to look at the bulls anytime. Most of their mothers and most of the herd sires are here as well, so you can look at the total package. If something comes up and you are unable to make it on sale day, we will have our sale broadcast via [www.cattleusa.com](http://www.cattleusa.com). Also, we invite you to call any of the sale consultants if you'd like to bid by phone.

We are pleased to again have some Red Angus lots consigned by Cal & Tracy Swanson of S Bar U Red Angus. Cal's bulls have run with ours since they were weaned on November 18, 2018, so they were developed on the same program as our bulls. We bought our Red Angus cows from Cal when they were heifers, and his 30+ years of experience and home-grown genetics have molded our Red Angus herd into something really special.

Thanks for your interest in our program, we look forward to earning your business, and we hope to see you on sale day!

Justin, Somer, Quentin, & Karsin Garrigan



Riley, Cally, Madelyn, & Gracie Garrigan





# *Annual* **BULL SALE**

## **Monday, April 8, 2019 @ 12:00 MT**

### *Faith Livestock Auction, Faith, SD*



#### **AUCTIONEER**

Dace Harper.....(605) 515-1535

#### **SALE CONSULTANTS**

Dan Piroutek.....(605) 685-4556

Jade Harper.....(605) 515-0337

#### **INTERNET VIEWING**

The sale will be broadcast via [www.cattleusa.com](http://www.cattleusa.com). Click on "Live Auctions" on sale day to view the sale. If you plan to bid via the internet, register one week in advance to make sure you are approved to bid at the sale. If you have trouble bidding online, please contact either of the sale consultants to place your bid with them.

#### **BULL VIDEOS**

Bull videos are available at [www.garrigancattle.com](http://www.garrigancattle.com). Scrotal and pelvic measurements will be available on sale day.

#### **TERMS & CONDITIONS**

The terms of the sale are cash or check. Registration certificates will be transferred to the new owner(s) once payment is made. **BULLS WILL SELL IN CATALOG ORDER.**

The sale will follow the suggested sale terms and conditions of the American Angus Association.

#### **SALE DAY ANNOUNCEMENTS**

All announcements from the block on sale day will take precedence over the information obtained in this catalog.

#### **BREEDING GUARANTEE**

All bulls are guaranteed 100% for soundness and fertility at delivery. If a bull is injured or dies during the first breeding season, a replacement will be supplied, if available. We will do our best to accommodate your individual situation.

#### **SALE LOCATION**

Faith Livestock Commission Co.  
127 N. 5<sup>th</sup> Ave. W.  
Faith, SD 57626

#### **SALE DAY TELEPHONE**

Faith Livestock.....(605) 967-2200

Justin Garrigan.....(605) 280-9220

Riley Garrigan.....(605) 280-9722

#### **FEED RATION**

We worked with Jack Sieban of J&R Feeds on a high-roughage ration to grow and develop the bulls, and to prepare them for a successful breeding season. As of 1/23/19, the average daily gain for the bulls was 3.33 lbs.

#### **HERD HEALTH**

Bulls have been on a shot protocol recommended by Dr. Tammy Winger of Faith Veterinary Service.

Birth: Type A Clostridium, Alpha CD, Inforce 3

Branding: Inforce 3, One Shot BVD

Preconditioning: Ultrabac 7 with Somnus, Bovishield Gold 1 Shot

Weaning: Nasalgen

Post-Weaning: Autogenous, Pulmaguard PHM-1, Dectomax Injectable

Fertility Testing: Fusogard (with booster 3 weeks later)

#### **FERTILITY TESTING**

All bulls on today's sale have passed their fertility examination; therefore, they will be ready to take home on sale day if you choose.

#### **FEEDING & DELIVERY**

A \$50 credit will be given for each bull taken home on sale day. GLC offers free delivery within 300 miles. GLC will do all they can to accommodate any further distances. GLC will start bull delivery immediately after the sale. Talk to Justin or Riley if alternate arrangements need to be made with any bulls you purchase.

# In the market for bred heifers?

At Garrigan Land & Cattle, we sell a package of home-raised, home-developed, and home-bred commercial Angus heifers at Faith Livestock each fall/winter. These heifers come straight from our own cow herd and are backed by our own genetics.

Stop by the ranch anytime if you are in the market for bred heifers, and we'd be glad to show you what we have to offer. We typically AI our heifers with a due date of March 1<sup>st</sup> for one day, and then they are cleaned-up with our bulls for 45 days, with a due date beginning March 15<sup>th</sup>.

*Visit with Justin or Riley to learn more.*



## Add A Tag That Adds Value.

The American Angus Association's comprehensive AngusSource® Process Verified Program and services are aimed at improving profitability in the commercial sector of the cattle industry. The AngusSource portfolio of five value-added programs is your source to stay competitive in the marketplace.

Visit [AngusSource.com](http://AngusSource.com) or call 816.383.5100 to get the value you deserve.

**ANGUS**SOURCE®  
VALUE ADDED PROGRAMS



Age and Source • Non-Hormone Treated Cattle • AS NeverEver3 • AS Cattle Care & Handling • AS Calf Management

# Registered Angus Bull Offering

We are very proud of this offering of top-end Angus bulls. We started out with 61 Angus bull calves, and through the course of our breeding bull development program, we are now down to 36 lots of the very best bulls we have to offer for the sale. We feel that this offering has something for everyone. We have a nice selection of calving-ease bulls, curve-bender bulls, and power bulls. This total offering of bulls can appeal to the diverse needs of the various cattlemen and women in our industry.

L O T	1	GLC Resource 018			BD: 03/23/18		19169413		Brand: 018																	
		Rito 707 of Ideal 3407 7075																								
		S A V Resource 1441																								
		S A V Blackcap May 4136																								
S A V Mandan 7423																										
Mra Blackcap 0107																										
MR Miss Pride 7214																										
<table><tr><td colspan="2">EPD's</td></tr><tr><td>CED</td><td>3</td></tr><tr><td>BW</td><td>2.9</td></tr><tr><td>WW</td><td>73</td></tr><tr><td>YW</td><td>131</td></tr><tr><td>Milk</td><td>24</td></tr></table>											EPD's		CED	3	BW	2.9	WW	73	YW	131	Milk	24				
EPD's																										
CED	3																									
BW	2.9																									
WW	73																									
YW	131																									
Milk	24																									
<table><tr><td>Act. BW</td><td>205 Adj</td><td>Ratio</td><td>365 Adj</td><td>Ratio</td><td>ADG</td><td>Ratio</td></tr><tr><td>94</td><td>745</td><td>118</td><td>1347</td><td>118</td><td>3.76</td><td>118</td></tr></table>											Act. BW	205 Adj	Ratio	365 Adj	Ratio	ADG	Ratio	94	745	118	1347	118	3.76	118		
Act. BW	205 Adj	Ratio	365 Adj	Ratio	ADG	Ratio																				
94	745	118	1347	118	3.76	118																				
<table><tr><td>%IMF</td><td>Ratio</td><td>REA</td><td>Ratio</td><td>Rib Fat</td><td>Ratio</td><td>Rump</td><td>Ratio</td></tr><tr><td>4.60</td><td>96</td><td>14.4</td><td>111</td><td>.32</td><td>139</td><td>.33</td><td>118</td></tr></table>											%IMF	Ratio	REA	Ratio	Rib Fat	Ratio	Rump	Ratio	4.60	96	14.4	111	.32	139	.33	118
%IMF	Ratio	REA	Ratio	Rib Fat	Ratio	Rump	Ratio																			
4.60	96	14.4	111	.32	139	.33	118																			

EPD's	
CED	3
BW	2.9
WW	73
YW	131
Milk	24



A bull worth getting excited about. Not only is his sire one of the most popular bull choices in the breed, he is also backed up by extreme cow power. 0107 is one of our most productive cows with a WR of 111 on 6 calves. She gets the job done every year, and she is one of the most structurally sound, eye-appealing cows you will find anywhere.

L O T	2	GLC Churchill 228			BD: 02/23/18		19129981		Brand: 228														
		DFA Hero 6017						<table><tr><th colspan="2">EPD's</th></tr><tr><td>CED</td><td>9</td></tr><tr><td>BW</td><td>0.2</td></tr><tr><td>WW</td><td>66</td></tr><tr><td>YW</td><td>119</td></tr><tr><td>Milk</td><td>23</td></tr></table>				EPD's		CED	9	BW	0.2	WW	66	YW	119	Milk	23
		EPD's																					
		CED	9																				
BW	0.2																						
WW	66																						
YW	119																						
Milk	23																						
V D A R Churchill 1063																							
V D A R Forever Lady 1409																							
A & B SpotLite 3065																							
GLC Queen Lois 616																							
Garrigan R Upward 684																							
Act. BW		205 Adj		Ratio		365 Adj		Ratio		ADG		Ratio											
85		720		114		1323		116		3.77		118											
%IMF		Ratio		REA		Ratio		Rib Fat		Ratio		Rump		Ratio									
5.25		109		12.6		97		.26		113		.29		104									

EPD's	
CED	9
BW	0.2
WW	66
YW	119
Milk	23



A bull raised by a first-calf heifer. As you can see by his numbers, she definitely did her job this year. This bull has been a stand-out since birth, and we've loved watching him grow up and seeing him turn out exactly like we hoped he would.

L O T	3	GLC Windy 7 108			BD: 03/04/18		19118239		Brand: 108	
		B Bar Windy 79								
		B Bar Windy 7 3575								
		B Bar Eulima 357								
		Sitz Upward 307R								
Garrigan S		Upward 978								
		Miss JT All Lady 978								

EPD's	
CED	8
BW	0.0
WW	58
YW	103
Milk	29



LOT 3 AND HIS DAM

Every time we walk into the bull pen, this bull stands out. He's a great all-around herd bull prospect for any operation, and he's out of a pathfinder dam. Keep the daughters!

\*This bull is a ¾ brother to Lot 26.





*This bull is a great curve-bender bull. He's got calving-ease combined with growth that is evident through his great ADG. He's got a nice, long neck and great depth of rib. His dam is a broody, moderate, and productive cow. With this bull, you'll want to keep the daughters.*



*This heifer bull comes from a cow line of difference makers, moderate and docile producers. If you are looking to better your cows' feet and udders, this is a bull that will truly help accomplish that goal.*

*\*This bull is a 3/4 brother to Lot 30.*



*A stout Resource son that will grow big steer calves. His young dam is proving herself already. She has a WR of 102 and a YR of 103 on two calves.*

*\*This bull is a 3/4 brother to Lot 24.*



*This bull is the longest bull in the sale. He has a lot of proven genetics in his pedigree. In addition to his sire, Net Present Value, he also boasts Nichols Extra K205 and S A V Final Answer 0035 on the dam's side. A bull that will grow both top-end steer calves and broody, "keepin' kind" cows.*

**LOT 4 GLC West River 648**  
BD: 03/04/18 19119696 Brand: 648

S A V Bismarck 5682  
S A V West River 2066  
S A V Emblynette 0491  
PA Full Power 1208  
Garrigan Jestress 506  
Millars Jestress 643

EPD's	
CED	8
BW	-0.4
WW	54
YW	101
Milk	21

Act. BW	205 Adj	Ratio	365 Adj	Ratio	ADG	Ratio	
76	644	102	1222	107	3.61	113	
%IMF	Ratio	REA	Ratio	Rib Fat	Ratio	Rump	Ratio
5.07	106	11.9	92	.35	152	.29	104

**LOT 5 GLC Sleep Easy 358**  
BD: 03/02/18 19118271 Brand: 358

V D A R Cedar Wind 8111  
V D A R Cedar Wind 1044  
V D A R Lass 2556  
Mra Upward 1241  
Garrigan Dakota 542  
Dakota Direction 2FD7

EPD's	
CED	11
BW	-1.1
WW	48
YW	89
Milk	25

Act. BW	205 Adj	Ratio	365 Adj	Ratio	ADG	Ratio	
82	610	97	1204	106	3.71	116	
%IMF	Ratio	REA	Ratio	Rib Fat	Ratio	Rump	Ratio
5.68	118	12.1	93	.21	91	.19	68

**LOT 6 GLC Resource 048**  
BD: 03/06/18 19119631 Brand: 048

Rito 707 of Ideal 3407 7075  
S A V Resource 1441  
S A V Blackcap May 4136  
V D A R Really Windy 4097  
Garrigan Miss Sara 515  
Garrigan Mentor 723

EPD's	
CED	1
BW	4.0
WW	67
YW	124
Milk	16

Act. BW	205 Adj	Ratio	365 Adj	Ratio	ADG	Ratio	
98	653	103	1237	108	3.65	114	
%IMF	Ratio	REA	Ratio	Rib Fat	Ratio	Rump	Ratio
3.83	80	13.4	103	.22	96	.18	64

**LOT 7 GLC Net Present Value 068**  
BD: 03/01/18 19119574 Brand: 068

N Bar Prime Time D806  
Sinclair Net Present Value  
Ideal 4465 of 6807 4286  
Millars Extra 972  
Garrigan Eriskay 549  
Eriskay Answer 2FA5

EPD's	
CED	5
BW	1.8
WW	58
YW	107
Milk	26

Act. BW	205 Adj	Ratio	365 Adj	Ratio	ADG	Ratio	
92	718	114	1302	114	3.65	114	
%IMF	Ratio	REA	Ratio	Rib Fat	Ratio	Rump	Ratio
4.23	88	14.8	114	.15	65	.22	79

## LOT 8 GLC Churchill 158

BD: 03/07/18 19130013 Brand: 158

DFA Hero 6017

V D A R Churchill 1063

V D A R Forever Lady 1409

Millars Reflection 170

Garrigan Cattle Lady 4MR11

Miss JT Cattle Lady 914

EPD's	
CED	5
BW	1.4
WW	61
YW	101
Milk	19

Act. BW	205 Adj	Ratio	365 Adj	Ratio	ADG	Ratio	
91	681	108	1209	106	3.30	103	
%IMF	Ratio	REA	Ratio	Rib Fat	Ratio	Rump	Ratio
2.92	61	12.5	96	.24	104	.26	93

*This bull is put together very nicely. We've liked him since birth. He comes from one of the most motherly, yet gentle cows in the herd. Look for him to sire some very nice calves and to be enjoyable to be around.*



LOT 8 AND HIS DAM

## LOT 9 GLC Resource 028

BD: 03/04/18 19119642 Brand: 028

Rito 707 of Ideal 3407 7075

S A V Resource 1441

S A V Blackcap May 4136

Connealy Mentor 7374

Garrigan Mentor 301

TA Alliance 907

EPD's	
CED	4
BW	2.5
WW	53
YW	105
Milk	20

Act. BW	205 Adj	Ratio	365 Adj	Ratio	ADG	Ratio	
90	590	94	1168	103	3.61	113	
%IMF	Ratio	REA	Ratio	Rib Fat	Ratio	Rump	Ratio
3.89	81	13.0	100	.22	96	.38	136

*This Resource son was good at weaning time, but since weaning, he's been growing like crazy. He has one of the highest ADG in the sale. This bull's mother has weaned 4 calves at a WR of 106. Another great Resource son backed by a proven cow family.*



## LOT 10 GLC Churchill 258

BD: 02/25/18 19129993 Brand: 258

DFA Hero 6017

V D A R Churchill 1063

V D A R Forever Lady 1409

V D A R Cedar Wind 1044

GLC Queen 637

Garrigan JT Queen 4U3

EPD's	
CED	9
BW	0.2
WW	62
YW	105
Milk	26

Act. BW	205 Adj	Ratio	365 Adj	Ratio	ADG	Ratio	
77	719	114	1229	108	3.19	100	
%IMF	Ratio	REA	Ratio	Rib Fat	Ratio	Rump	Ratio
6.01	125	13.7	105	.28	122	.29	104

*This stylish Churchill son is a heifer bull out of a first-calf heifer boasting impressive numbers. He boasts some of the highest carcass numbers across the board.*



## LOT 11 GLC West River 078

BD: 03/07/18 19119700 Brand: 078

S A V Bismarck 5682

S A V West River 2066

S A V Emblynette 0491

Sitz Upward 307R

Garrigan S Upward 705

D R L Trav 004-572 BAR F 614

EPD's	
CED	3
BW	2.3
WW	55
YW	99
Milk	24

Act. BW	205 Adj	Ratio	365 Adj	Ratio	ADG	Ratio	
95	636	101	1166	102	3.31	104	
%IMF	Ratio	REA	Ratio	Rib Fat	Ratio	Rump	Ratio
4.36	91	12.4	95	.19	83	.26	93

*A bull that combines proven genetics on both sides of his pedigree. He's got the growth to be expected from Upward and the maternal traits that are synonymous with Bismarck and Final Answer.*

## LOT 12 GLC Churchill 268

BD: 02/26/18 19129979 Brand: 268

DFA Hero 6017

V D A R Churchill 1063

V D A R Forever Lady 1409

V D A R Cedar Wind 1064

GLC Miss Sara 638

DRL Trav-004-572-Au Bar F114

EPD's	
CED	-5
BW	4.2
WW	68
YW	118
Milk	23

Act. BW	205 Adj	Ratio	365 Adj	Ratio	ADG	Ratio	
100	717	114	1301	114	3.65	114	
%IMF	Ratio	REA	Ratio	Rib Fat	Ratio	Rump	Ratio
4.89	102	12.6	97	.17	74	.26	93

*A Churchill son that screams power and that has the actual gain to back it up. If you want your cows to have heavier calves at weaning time, this is a bull that can help achieve that goal!*



Lot 13

## **13** GLC Huckleberry 468 BD: 03/19/18 19137210 Brand: 468

GLC Huckleberry 4T6  
 GLC Huckleberry 496  
 DRL OP2  
 D R L Direction BFS 117  
 Dakota Direction 2FD7  
 D OT26 Dakota 8237

EPD's	
CED	10
BW	-0.5
WW	49
YW	85
Milk	25

Act. BW	205 Adj	Ratio	365 Adj	Ratio	ADG	Ratio	
81	648	103	1186	104	3.36	105	
%IMF	Ratio	REA	Ratio	Rib Fat	Ratio	Rump	Ratio
6.35	132	13.2	102	.28	122	.39	139

*This heifer bull comes from a picture-perfect cow. She averages a WR of 103 on 5 calves. She's a great producer, and this pedigree will produce heifer calves that you'll want to infuse into your herd.*

## **14** GLC Churchill 208 BD: 02/28/18 19130005 Brand: 208

DFA Hero 6017  
 V D A R Churchill 1063  
 V D A R Forever Lady 1409  
 Mra Upward 1241  
 Garrigan Edella 543  
 Garrigan F Direction 418

EPD's	
CED	13
BW	-2.6
WW	53
YW	92
Milk	19

Act. BW	205 Adj	Ratio	365 Adj	Ratio	ADG	Ratio	
70	637	101	1189	104	3.45	108	
%IMF	Ratio	REA	Ratio	Rib Fat	Ratio	Rump	Ratio
6.33	132	12.1	93	.28	122	.42	150

*This is a good bull that's performed well all the way through the development process. Check out those carcass numbers! He comes from a nice cow line and from a cow that has a good calf every year.*

*\*This bull is a ¼ brother to Lots 21 & 23*



LOT 18 AND HIS DAM

## **15** GLC Remedy 098 BD: 03/10/18 19119709 Brand: 098

Connealy Thunder  
 CTS Remedy 1T01  
 CTS 7V03 Bellemere Maid 9T02  
 Sitz Upward 307R  
 Garrigan Erica 4U1  
 Millars Erica 628

EPD's	
CED	4
BW	1.0
WW	55
YW	110
Milk	27

Act. BW	205 Adj	Ratio	365 Adj	Ratio	ADG	Ratio	
88	630	100	1176	103	3.41	107	
%IMF	Ratio	REA	Ratio	Rib Fat	Ratio	Rump	Ratio
3.71	77	12.2	94	.18	78	.16	57

*This bull is our only Remedy calf in the sale. He comes from a very docile cow line. He'll make nice steer calves, and he'll be an easy one to keep around.*

## **16** GLC Churchill 128 BD: 03/03/18 19130020 Brand: 128

DFA Hero 6017  
 V D A R Churchill 1063  
 V D A R Forever Lady 1409  
 S A V 8180 Traveler 004  
 Millars Primrose Lady 636  
 Petrys Primrose Lady 836

EPD's	
CED	11
BW	-1.2
WW	54
YW	92
Milk	19

Act. BW	205 Adj	Ratio	365 Adj	Ratio	ADG	Ratio	
72	657	104	1177	103	3.25	102	
%IMF	Ratio	REA	Ratio	Rib Fat	Ratio	Rump	Ratio
4.74	99	13.0	100	.25	109	.36	129

*This heifer bull is out of a 12-year-old cow that has a WR of 100 on 7 reported calves. She also has an average BW of 71 lbs. on 7 calves. She's done it every year, and this year is no exception. In our eyes, this bull is one that keeps getting better and better. You won't miss him on sale day!*

## **17** GLC Treasure 588 BD: 03/13/18 19118282 Brand: 588

Ginger Hill Treasure 233  
 GLC Treasure 516  
 V D A R Miss Wix 4351  
 Tombstone 050  
 Garrigan Windey 4T2  
 Windey Bismarck 2BM3

EPD's	
CED	7
BW	0.6
WW	51
YW	89
Milk	26

Act. BW	205 Adj	Ratio	365 Adj	Ratio	ADG	Ratio	
88	660	105	1180	104	3.25	102	
%IMF	Ratio	REA	Ratio	Rib Fat	Ratio	Rump	Ratio
4.38	91	13.8	106	.38	165	.32	114

*This bull comes from a flashy Tombstone daughter. He has a pedigree featuring maternal excellence, but as you can see, he also performed well during the development process and boasts great carcass numbers.*

## **18** GLC Churchill 138 BD: 03/06/18 19130019 Brand: 138

DFA Hero 6017  
 V D A R Churchill 1063  
 V D A R Forever Lady 1409  
 Connealy Mentor 7374  
 Garrigan Mentor 901  
 D R L Integrity Babe 901

EPD's	
CED	6
BW	1.3
WW	57
YW	93
Milk	22

Act. BW	205 Adj	Ratio	365 Adj	Ratio	ADG	Ratio	
94	706	112	1162	102	2.85	89	
%IMF	Ratio	REA	Ratio	Rib Fat	Ratio	Rump	Ratio
5.64	118	12.2	94	.19	83	.22	79

*A really nice bull out of a pathfinder cow who's raised 4 calves with a WR of 106. He'll grow the steers, and you'll want to keep the heifers!*



# 19 GLC Churchill 278

BD: 02/24/18 19129990 Brand: 278

DFA Hero 6017

V D A R Churchill 1063

V D A R Forever Lady 1409

V D A R Cedar Wind 1064

GLC Blackcap 641

Blackcap Answer 2FA7

EPD's	
CED	8
BW	0.7
WW	55
YW	100
Milk	23

Act. BW	205 Adj	Ratio	365 Adj	Ratio	ADG	Ratio
80	624	99	1197	105	3.58	112

%IMF	Ratio	REA	Ratio	Rib Fat	Ratio	Rump	Ratio
3.84	80	12.8	98	.23	100	.29	104

*This is a heifer bull that comes from a first-calf heifer who we've been excited about since she was a calf, as her pedigree is packed with cow-makers! As you can see, her first calf didn't disappoint. Keep the daughters!*



Lot 19 AND HIS DAM

# 20 GLC Sleep Easy 418

BD: 02/28/18 19118290 Brand: 418

V D A R Cedar Wind 8111

V D A R Cedar Wind 1044

V D A R Lass 2556

Garrigan Hoover Dam 2H2

GLC All Lady 652

Garrigan S Upward 978

EPD's	
CED	7
BW	1.0
WW	54
YW	89
Milk	29

Act. BW	205 Adj	Ratio	365 Adj	Ratio	ADG	Ratio
89	675	107	1190	104	3.22	101

%IMF	Ratio	REA	Ratio	Rib Fat	Ratio	Rump	Ratio
5.66	118	12.7	98	.21	91	.29	104

*This is an impressive bull out of a first calf heifer. This bull is a performer, and his pedigree is packed full of maternal power. This bull will produce both steers that perform and heifers that last.*

*\*This bull is a 3/4 brother to Lot 25*

# 23 GLC Churchill 198

BD: 03/08/18 19130007 Brand: 198

DFA Hero 6017

V D A R Churchill 1063

V D A R Forever Lady 1409

Mra Upward 1241

Garrigan Sara 540

DRL Trav 004-572 AU BAR F114

EPD's	
CED	-3
BW	4.3
WW	58
YW	103
Milk	18

Act. BW	205 Adj	Ratio	365 Adj	Ratio	ADG	Ratio
104	634	100	1181	103	3.14	98

%IMF	Ratio	REA	Ratio	Rib Fat	Ratio	Rump	Ratio
4.62	96	14.6	112	.24	104	.32	114

*This is a stylish bull that's always ready for a picture (He's our back-cover bull.) He will not only give you big steer calves on sale day, they will also be the most stylish in the pen. And check out those carcass numbers!*

*\*This bull is a 3/4 brother to Lots 14 & 21*

# 21 GLC Churchill 168

BD: 03/08/18 19130015 Brand: 168

DFA Hero 6017

V D A R Churchill 1063

V D A R Forever Lady 1409

Mra Upward 1241

Garrigan Eileen 4RU2

TA Alliance 010

EPD's	
CED	8
BW	0.0
WW	59
YW	99
Milk	20

Act. BW	205 Adj	Ratio	365 Adj	Ratio	ADG	Ratio
83	670	106	1172	103	3.14	98

%IMF	Ratio	REA	Ratio	Rib Fat	Ratio	Rump	Ratio
4.41	92	12.0	92	.19	83	.24	86

*Look for this bull to make some good steer calves. And we are liking him more and more as he grows up. He's a heavy-made bull, and he's filling out well as he develops.*

*\*This bull is a 3/4 brother to Lots 14 & 23*

# 24 GLC Resource 038

BD: 03/07/18 19119630 Brand: 038

Rito 707 of Ideal 3407 7075

S A V Resource 1441

S A V Blackcap May 4136

V D A R Really Windy 4097

Garrigan Bright Girl 512

Miss JT Bright Girl 908

EPD's	
CED	-2
BW	5.2
WW	66
YW	118
Milk	16

Act. BW	205 Adj	Ratio	365 Adj	Ratio	ADG	Ratio
105	653	103	1160	101	3.17	100

%IMF	Ratio	REA	Ratio	Rib Fat	Ratio	Rump	Ratio
4.61	96	14.7	113	.20	87	.26	93

*This bull boasts the one of the highest YW EPD in the sale. He's got the growth and power that will pay off on sale day. His maternal granddam was a favorite in the herd, and this bull's mother was her last calf as she passed away from a rattlesnake bite.*

*\*This bull is a 3/4 brother to Lot 6.*

# 22 GLC Huckleberry 488

BD: 03/08/18 19118310 Brand: 488

GLC Huckleberry 4T6

GLC Huckleberry 496

DRL OP2

V D A R Really Windy 4097

Garrigan Blackcap 4RW1

Blackcap Answer 2FA7

EPD's	
CED	7
BW	1.1
WW	54
YW	90
Milk	21

Act. BW	205 Adj	Ratio	365 Adj	Ratio	ADG	Ratio
90	632	100	1141	100	3.18	100

%IMF	Ratio	REA	Ratio	Rib Fat	Ratio	Rump	Ratio
5.97	124	12.3	95	.22	96	.33	118

*This is a very stylish looking bull from a great cow line. As you can see, this bull's maternal grand-dam is the same cow as in lot 19. Keep the daughters!*



Lot 22



Lot 27

## 25 GLC Sleep Easy 398

BD: 03/03/18 19118287 Brand: 398

V D A R Cedar Wind 8111  
**V D A R Cedar Wind 1044**  
 V D A R Lass 2556  
 Garrigan Hoover Dam 2H2  
**GLC Lucy 647**  
 Garrigan Mentor 501

EPD's	
CED	9
BW	-0.4
WW	50
YW	86
Milk	26

Act. BW	205 Adj	Ratio	365 Adj	Ratio	ADG	Ratio
83	635	101	1173	103	3.36	105

%IMF	Ratio	REA	Ratio	Rib Fat	Ratio	Rump	Ratio
4.72	98	12.2	94	.22	96	.32	114

*This is a nice bull and a great heifer bull prospect. As you can see by his ADG, he has also done very well in his bull development.*  
*\*This bull is a 3/4 brother to Lot 20.*

## 26 GLC Windy 7 118

BD: 03/07/18 19118240 Brand: 118

B Bar Windy 79  
**B Bar Windy 7 3575**  
 B Bar Eulima 357  
 Sitz Upward 307R  
**Garrigan Forever Lady 504**  
 DRL Forever Lady 1L3 of 313

EPD's	
CED	8
BW	-0.1
WW	49
YW	93
Milk	27

Act. BW	205 Adj	Ratio	365 Adj	Ratio	ADG	Ratio
88	609	97	1142	100	3.33	104

%IMF	Ratio	REA	Ratio	Rib Fat	Ratio	Rump	Ratio
4.81	100	12.4	95	.27	117	.29	104

*Another great Windy 7 son with very balanced numbers. We call him our "joker" in the group. He'll be lazing on the straw one minute and then up and ready to play the next. If a bull can have personality, he is it!*  
*\*This bull is a 3/4 brother to Lot 3.*



Lot 30

## 27 GLC Hercules 538

BD: 03/25/18 19118306 Brand: 538

V D A R Cedar Wind 8111  
**V D A R Cedar Wind 1064**  
 V D A R Lass 2526  
 Millars Reflection 170  
**Garrigan Windey 4MR6**  
 Millars Blackcap Windey 642

EPD's	
CED	4
BW	1.9
WW	50
YW	89
Milk	24

Act. BW	205 Adj	Ratio	365 Adj	Ratio	ADG	Ratio
95	620	98	1153	101	3.33	104

%IMF	Ratio	REA	Ratio	Rib Fat	Ratio	Rump	Ratio
6.70	140	13.7	105	.28	122	.24	86

*This bull really took off at weaning time and has impressive carcass numbers. You can't help but notice him in the bull pen especially when he needs his neck scratched!*  
*\*This bull is a 3/4 brother to Lots 34 and 36.*

## 28 GLC Sleep Easy 368

BD: 03/04/18 19118270 Brand: 368

V D A R Cedar Wind 8111  
**V D A R Cedar Wind 1044**  
 V D A R Lass 2556  
 Connealy Guinness  
**GLC Rosie 602**  
 D R L Direction BFS 806

EPD's	
CED	8
BW	-0.1
WW	49
YW	86
Milk	29

Act. BW	205 Adj	Ratio	365 Adj	Ratio	ADG	Ratio
82	638	101	1166	102	3.30	104

%IMF	Ratio	REA	Ratio	Rib Fat	Ratio	Rump	Ratio
6.34	132	12.9	99	.29	126	.29	104

*This bull boasts the calving ease of 1044 paired with the stout, heavy bone from Guinness. Look for these steer calves to grow well!*  
*\*This bull is a 3/4 brother to Lot 35.*

## 29 GLC Huckleberry 478

BD: 03/21/18 19118309 Brand: 478

GLC Huckleberry 4T6  
**GLC Huckleberry 496**  
 DRL OP2  
 Mra Upward 1241  
**Garrigan JT Queen 4RU6**  
 Miss JT Queen 995

EPD's	
CED	2
BW	2.9
WW	51
YW	90
Milk	20

Act. BW	205 Adj	Ratio	365 Adj	Ratio	ADG	Ratio
100	614	97	1132	99	3.24	102

%IMF	Ratio	REA	Ratio	Rib Fat	Ratio	Rump	Ratio
4.53	94	13.6	105	.21	91	.27	96

*This is a great bull who gained well since weaning. This bull will help add depth of rib to his calves without adding too much frame.*

## 30 GLC Sleep Easy 348

BD: 03/04/18 19118272 Brand: 348

V D A R Cedar Wind 8111  
**V D A R Cedar Wind 1044**  
 V D A R Lass 2556  
 Mra Upward 1241  
**Garrigan Rosie 539**  
 D R L Direction BFS 806

EPD's	
CED	10
BW	-1.6
WW	47
YW	78
Milk	25

Act. BW	205 Adj	Ratio	365 Adj	Ratio	ADG	Ratio
80	630	100	1123	98	3.08	97

%IMF	Ratio	REA	Ratio	Rib Fat	Ratio	Rump	Ratio
4.82	100	11.9	92	.15	65	.20	71

*This is an excellent heifer bull from a really nice cow line. And he's easy on the eyes!*  
*\*This bull is a 3/4 brother to Lot 5.*

# **31** GLC Churchill 238

BD: 02/27/18 19129984 Brand: 238

DFA Hero 6017

V D A R Churchill 1063

V D A R Forever Lady 1409

Connealy Black Granite

GLC Dorothy 619

Garrigan Dorothy 4MR4

EPD's	
CED	6
BW	1.6
WW	58
YW	94
Milk	21

Act. BW	205 Adj	Ratio	365 Adj	Ratio	ADG	Ratio
81	656	104	1139	100	3.02	95

%IMF	Ratio	REA	Ratio	Rib Fat	Ratio	Rump	Ratio
4.16	87	13.4	103	.19	83	.24	86

*This bull is out of a first-calf heifer from our favorite cow family on the ranch. If you are looking to add longevity to your herd, this bull is for you. The matriarch of this cow family, the original Dorothy, is our 18-year-old pet that raised a 700 lb. heifer calf at weaning this past year. Keep the daughters!*

# **32** GLC Hercules 568

BD: 03/24/18 19118284 Brand: 568

V D A R Cedar Wind 8111

V D A R Cedar Wind 1064

V D A R Lass 2526

Mra Upward 1241

Garrigan Lassie 538

Millars Queen Lassie 69

EPD's	
CED	2
BW	2.6
WW	50
YW	89
Milk	25

Act. BW	205 Adj	Ratio	365 Adj	Ratio	ADG	Ratio
95	646	102	1148	100	3.14	98

%IMF	Ratio	REA	Ratio	Rib Fat	Ratio	Rump	Ratio
4.08	85	13.5	104	.21	91	.17	61

*If you're looking to sell big steer calves without sacrificing maternal traits, this bull is for you. He boasts a great pedigree on both sides.*

# **33** GLC Sleep Easy 448

BD: 02/26/18 19118294 Brand: 448

V D A R Cedar Wind 8111

V D A R Cedar Wind 1044

V D A R Lass 2556

Garrigan Brush Traveler 4B3

GLC Dorothy 659

TA Au Bar for Sure 806

EPD's	
CED	9
BW	-0.8
WW	45
YW	73
Milk	29

Act. BW	205 Adj	Ratio	365 Adj	Ratio	ADG	Ratio
77	644	102	1135	99	3.07	96

%IMF	Ratio	REA	Ratio	Rib Fat	Ratio	Rump	Ratio
4.69	98	10.1	78	.26	113	.33	118

*Another bull from our Dorothy cow line with sure-fire, sleep all night, calving-ease.*

# **34** GLC Hercules 528

BD: 03/27/18 19118301 Brand: 528

V D A R Cedar Wind 8111

V D A R Cedar Wind 1064

V D A R Lass 2526

Millars Reflection 170

Garrigan M Reflection 721

DRL Trav 004-572 BAR F 3044

EPD's	
CED	2
BW	2.0
WW	46
YW	79
Milk	23

Act. BW	205 Adj	Ratio	365 Adj	Ratio	ADG	Ratio
95	611	97	1096	96	3.03	95

%IMF	Ratio	REA	Ratio	Rib Fat	Ratio	Rump	Ratio
4.61	96	15.9	122	.17	74	.30	107

*For some added growth in your herd, take a look at this bull. His sire has good, proven performance, and his dam has a WR of 103 on 4 calves and a YR of 103 on 2 calves.*

*\*This bull is a ¼ brother to Lots 27 and 36.*



Lot 35

# **35** GLC Sleep Easy 378

BD: 02/25/18 19118269 Brand: 378

V D A R Cedar Wind 8111

V D A R Cedar Wind 1044

V D A R Lass 2556

Connealy Guinness

GLC Augie 608

Garrigan S Upward 705

EPD's	
CED	8
BW	0.0
WW	49
YW	85
Milk	28

Act. BW	205 Adj	Ratio	365 Adj	Ratio	ADG	Ratio
82	613	97	1098	96	3.03	95

%IMF	Ratio	REA	Ratio	Rib Fat	Ratio	Rump	Ratio
4.89	102	10.9	84	.19	83	.24	86

*Here is another bull with both calving ease coupled with a heavy bone structure. He's got his sire's signature stamped look.*

*\*This bull is a ¼ brother to Lot 28.*

# **36** GLC Hercules 558

BD: 03/23/18 19118285 Brand: 558

V D A R Cedar Wind 8111

V D A R Cedar Wind 1064

V D A R Lass 2526

Millars Reflection 170

Garrigan Martha 537

Garrigan Consensus 908

EPD's	
CED	4
BW	1.9
WW	51
YW	86
Milk	23

Act. BW	205 Adj	Ratio	365 Adj	Ratio	ADG	Ratio
95	638	101	1118	98	3.00	94

%IMF	Ratio	REA	Ratio	Rib Fat	Ratio	Rump	Ratio
2.94	61	13.5	104	.17	74	.24	86

*This bull comes from our Martha cowline. The original "Martha" had one-of-a-kind docility, and this bull's dam, "Martha's" daughter, is also a very gentle, easy-keeping cow out of a great Millar Reflection bull.*

*\*This bull is a ¼ brother to Lots 27 and 34.*



Lot 36

## Favorite Lots:



Thank you for your interest in our program!

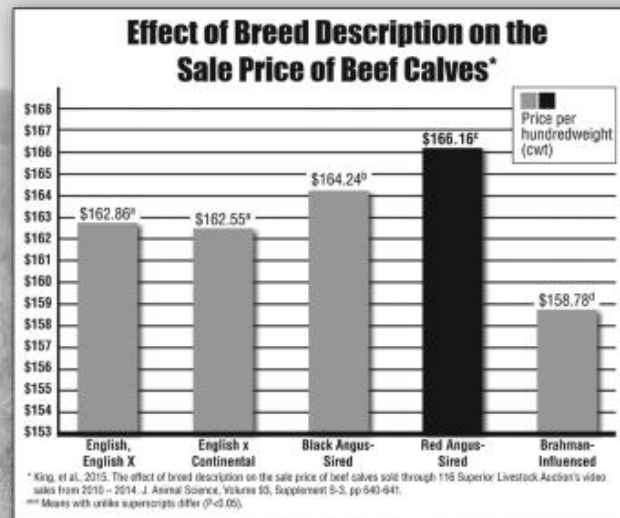
# *Achieve it!* **RETURN ON INVESTMENT**

Red Angus genetics will improve your return on investment!



*"For 10 to 15 years all the buyers ever talked about was black calves, and the black calves always brought more than everything else. Now I can honestly say that good Red Angus calves outsell the black calves and I know the Red Angus bred heifers will outsell black Angus bred heifers of equal quality every day."*

— Jim Davis,  
Superior Livestock Auction



Ranch Tested. Rancher Trusted.

# Red Angus



**RedAngus.org**  
(940) 387-3502

Independent research shows Red Angus-sired calves sold for a higher price than all other breed groups. Red Angus bulls make a positive difference in your breeding program's bottom line.

**Invest in your future today!**



# Registered 1-A Red Angus Bull Offering

This year's Red Angus bulls feature a little something for everyone. We have a great selection of calving-ease bulls along with a couple growthier bulls great for cows and steer-makers. Lots 40, 41, 43, 46, & 47 are from S Bar U Red Angus, and as you'll see, they fit very nicely with the rest of our offering. Cal also sells bulls by private treaty. He has a nice selection of bulls available at his ranch in Hamill, SD. Give him a call at (605) 842-3876 if you'd like to learn more about his program.

L O T	37	GLC Stetson 5388	
		BD: 03/02/18	3980742
		Brand: 5388	
LIC Mission Statement P27			
GMRA Stetson 2240			
GMRA Venice 359			
Beckton Nebula W210 L3			
S Bar U Darling 538			
S Bar U Darling 105			

EPD's	
CED	13
BW	-0.5
WW	68
YW	119
Milk	28
ME	1

EPD's	
CED	13
BW	-0.5
WW	68
YW	119
Milk	28
ME	1

HB	GM	Act. BW	205 Adj	Ratio	365 Adj	Ratio	ADG	Ratio
190	51	94	655	111	1279	116	3.76	118
%IMF		Ratio	REA	Ratio	Back Fat	Ratio		
6.17		142	10.51	88	0.14	127		



*This bull has been one we've loved from this start. He was born with a bully look, and he's retained that attractive, classic Angus look still today. He's got the makings of a great herd bull. If you're looking for your calves to grow, this is your bull. And with Beckton Nebula in the pedigree, keep the daughters!*

L O T	38	GLC Stetson 5408	
		BD: 03/12/18	3980740
		Brand: 5408	
LIC Mission Statement P27			
GMRA Stetson 2240			
GMRA Venice 359			
Beckton Nebula W210 L3			
S Bar U Sonja 540			
S Bar U Sonja 123			

EPD's	
CED	13
BW	-1.7
WW	57
YW	102
Milk	26
ME	0

EPD's	
CED	13
BW	-1.7
WW	57
YW	102
Milk	26
ME	0

HB	GM	Act. BW	205 Adj	Ratio	365 Adj	Ratio	ADG	Ratio
183	50	88	577	98	1184	107	3.78	119
%IMF		Ratio	REA	Ratio	Back Fat	Ratio		
5.25		120	12.67	107	0.23	80		



*We liked this bull as a calf, but since weaning, he has really set himself apart. He's a nice, wide-topped bull that has good feet and heavy bone. A bull that is truly efficient and functional. He's also a 3/4 brother to the previous lot.*

L O T	39	GLC Stetson 5838
	BD: 03/02/18	3980748
		Brand: 5838
LIC Mission Statement P27		
GMRA Stetson 2240		
GMRA Venice 359		
CTS S Bar U Nebula 320		
S Bar U Lizzie 583		
S Bar U Lizzie 438		

EPD's	
CED	18
BW	-4.4
WW	53
YW	90
Milk	31
ME	-2

EPD's	
CED	18
BW	-4.4
WW	53
YW	90
Milk	31
ME	-2

HB	GM	Act. BW	205 Adj	Ratio	365 Adj	Ratio	ADG	Ratio
195	48	71	608	103	1107	100	3.11	97
%IMF		Ratio	REA	Ratio	Back Fat	Ratio		
4.44		102	12.16	102	0.29	49		



*This bull boasts the highest CED in the sale. In addition, he performed well since birth. However, what we like most about this bull is his cow line. His maternal granddam raised calves every year through the age of 14, and during that time, she boasted a 108.13 MPPA. If you keep your heifers and expect their longevity in your herd, this bull is exactly what you want.*



DAM OF LOT 42

## LOT 40 CCTS S Bar U Tradition 863

BD: 03/24/18 4009818 Brand: 863

Tradition 81 SCN  
 CTS S Bar U Tradition 468  
 S Bar U Sonja 1120  
 Bruns Tradesman 138  
 S Bar U Megan 332  
 S Bar U Megan 021

EPD's	
CED	11
BW	0.1
WW	46
YW	73
Milk	23
ME	-2

HB	GM	Act. BW	205 Adj	Ratio	365 Adj	Ratio	ADG	Ratio
179	46	84	644	99	1100	100	2.85	107
%IMF	Ratio	REA	Ratio	Back Fat	Ratio			
3.98	99	12.07	94	0.15	75			

Coming from an 84 lb. BW, this bull was still quick to be the one we always noticed in the calf pen. He's continuing to develop into a great herd bull.

## LOT 41 CCTS S Bar U Tradition 857

BD: 04/09/18 4009816 Brand: 857

Tradition 81 SCN  
 CTS S Bar U Tradition 468  
 S Bar U Sonja 1120  
 CBR Ram Rod 5314-8327  
 S Bar U Tinkerbelle 303  
 S Bar U Tinkerbelle 833

EPD's	
CED	10
BW	0.5
WW	47
YW	74
Milk	22
ME	-2

HB	GM	Act. BW	205 Adj	Ratio	365 Adj	Ratio	ADG	Ratio
177	47	95	685	105	1129	103	2.77	105
%IMF	Ratio	REA	Ratio	Back Fat	Ratio			
3.73	93	12.92	100	0.10	113			

This bull looked like a bull since the day he was born. He has performed very well at weaning at beyond. This bull will produce both nice steer calves and broody daughters that you'll want to hang on to.



Lot 41

## LOT 42 GLC Prestigious 5468

BD: 03/13/18 3980736 Brand: 5468

LSF Takeover 9943W  
 Brown AA Prestigious B5153  
 Brown MS Destination T7634  
 Tradition 81 SCN  
 S Bar U Baroness 546  
 S Bar U Baroness 158

EPD's	
CED	12
BW	-0.9
WW	54
YW	81
Milk	21
ME	0

HB	GM	Act. BW	205 Adj	Ratio	365 Adj	Ratio	ADG	Ratio
185	47	86	590	100	1062	96	2.94	92
%IMF	Ratio	REA	Ratio	Back Fat	Ratio			
3.66	84	11.59	97	0.19	105			

This bull comes from one of the nicest cows on our ranch. She is one of the best and most gentle mothers that we have. It usually takes two people to work her calf, one to weigh and tag the calf, and one to scratch and cake feed the cow! To have an entire herd of cows with her disposition and production would be heaven!

## LOT 43 CTS S Bar U Tradition 866

BD: 04/19/18 4009982 Brand: 866

Tradition 81 SCN  
 CTS S Bar U Tradition 468  
 S Bar U Sonja 1120  
 Bruns Tradesman 138  
 S Bar U Lizzie 337  
 S Bar U Lizzie 083

EPD's	
CED	8
BW	2.9
WW	59
YW	97
Milk	25
ME	-1

HB	GM	Act. BW	205 Adj	Ratio	365 Adj	Ratio	ADG	Ratio
187	49	90	667	119	1153	119	3.03	114
%IMF	Ratio	REA	Ratio	Back Fat	Ratio			
4.29	109	12.09	95	0.13	115			

The dam of this bull is a beast of a producer. She has a 112.36 MPPA on 4 calves. If you're looking for calves that grow, this guy is what you're looking for!

## LOT 44 GLC Stetson 5518

BD: 03/11/18 3980706 Brand: 5518

LIC Mission Statement P27  
 GMRA Stetson 2240  
 GMRA Venice 359  
 Tradition 81 SCN  
 S Bar U Babe 551  
 S Bar U Babe 194

EPD's	
CED	15
BW	-2.3
WW	54
YW	87
Milk	23
ME	0

HB	GM	Act. BW	205 Adj	Ratio	365 Adj	Ratio	ADG	Ratio
173	47	77	631	107	1062	96	2.68	84
%IMF	Ratio	REA	Ratio	Back Fat	Ratio			
2.43	56	11.96	101	0.16	116			

This Stetson son is a nice, stout bull that is hard to fault when you look at him. He fits in well with his sire group, and he has the ability to compliment any herd.

## LOT 45 GLC Redemption 5538

BD: 03/25/18 3980726 Brand: 5538

Brown JYJ Redemption Y1334  
 Lone Tree Redemption C005  
 Lone Tree Pralee A065  
 Tradition 81 SCN  
 S Bar U Sonja 553  
 S Bar U Sonja 216

EPD's	
CED	15
BW	-3.3
WW	42
YW	70
Milk	24
ME	-5

HB	GM	Act. BW	205 Adj	Ratio	365 Adj	Ratio	ADG	Ratio
196	48	80	559	95	1036	94	2.97	93
%IMF	Ratio	REA	Ratio	Back Fat	Ratio			
4.19	96	12.48	105	0.15	124			

This bull is growing into a total replica of his sire. He comes from an attractive, broody cow, and he has the making to sire heifers and cows for a long time.

# **46** CTS S Bar U Fusion 815

BD: 04/17/18 4009928 Brand: 815

Andras Fusion R236

CTS S Bar U Fusion 577

S Bar U Lizzie 383

CTS S Bar U Lancer 651

S Bar U Lizzie 881

S Bar U Lizzie 3114

EPD's	
CED	13
BW	-1.3
WW	54
YW	79
Milk	21
ME	-1

HB	GM	Act. BW	205 Adj	Ratio	365 Adj	Ratio	ADG	Ratio
200	48	82	669	119	1071	111	2.49	94

%IMF	Ratio	REA	Ratio	Back Fat	Ratio
3.85	98	12.95	102	0.17	88

*This bull boasts tremendous length of body, much like his sire. If you are looking to lengthen out your cows, this bull would be a great bull to help achieve that goal.*

# **47** CCTS S Bar U Fusion 828

BD: 04/18/18 4009812 Brand: 828

Andras Fusion R236

CTS S Bar U Fusion 577

S Bar U Lizzie 383

Oscar Sitz Alli-6595

S Bar U Jessie 992

S Bar U Jessie 567

EPD's	
CED	17
BW	-4.0
WW	39
YW	58
Milk	24
ME	-4

HB	GM	Act. BW	205 Adj	Ratio	365 Adj	Ratio	ADG	Ratio
203	46	78	630	96	1055	96	2.65	100

%IMF	Ratio	REA	Ratio	Back Fat	Ratio
4.37	109	13.67	106	0.11	111

*We liked this bull at weaning, but since then, we've loved how he's developed from a calf to a bull. We are impressed with his carcass numbers as well. He would make a great sure-fire heifer bull for any operation.*

# **48** CCTS S Bar U Stetson 4288

BD: 03/07/18 4009822 Brand: 4288

LIC Mission Statement P27

GMRA Stetson 2240

GMRA Venice 359

Beckton Nebula W210 L3

S Bar U Jessie 428

S Bar U Jessie 992

EPD's	
CED	17
BW	-4.2
WW	52
YW	87
Milk	26
ME	0

HB	GM	Act. BW	205 Adj	Ratio	365 Adj	Ratio	ADG	Ratio
188	48	74	553	95	1029	96	2.97	93

%IMF	Ratio	REA	Ratio	Back Fat	Ratio
4.31	106	10.39	95	0.18	100

*This is a heifer bull extraordinary. His dam was one of our original Red Angus cows, and she's produced nice calves every year, with this year being no exception.*



Lot 47



*These are the ones who make every day an adventure and keep the ranch running right!*



# Reference Sires



SAVRESOURCE 1441

R E F	A	S A V Resource 1441														
		BD: 01/07/11		17016597												
		R R Rito 707														
		Rito 707 of Ideal 3407 7075														
		Ideal 3407 of 1418 076														
		S A V 8180 Traveler 004														
		S A V Blackcap May 4136														
		S A V May 2397														
			<table><tr><th colspan="2">EPD's</th></tr><tr><td>CED</td><td>0</td></tr><tr><td>BW</td><td>4.1</td></tr><tr><td>WW</td><td>70</td></tr><tr><td>YW</td><td>134</td></tr><tr><td>Milk</td><td>19</td></tr></table>		EPD's		CED	0	BW	4.1	WW	70	YW	134	Milk	19
EPD's																
CED	0															
BW	4.1															
WW	70															
YW	134															
Milk	19															
			<table><tr><th>Act. BW</th><th>205 Adj</th><th>365 Adj</th></tr><tr><td>83</td><td>920</td><td>1367</td></tr></table>		Act. BW	205 Adj	365 Adj	83	920	1367						
Act. BW	205 Adj	365 Adj														
83	920	1367														

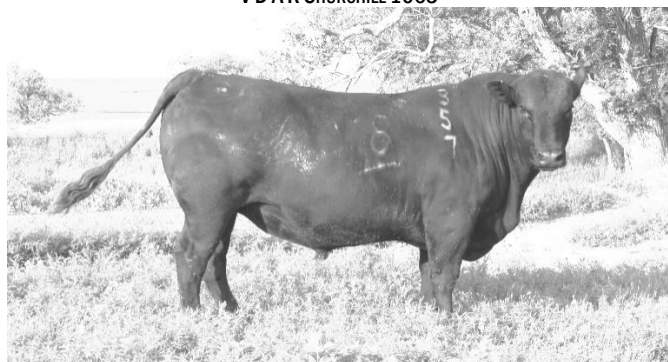
*We Al'd to Resource because we like the way his calves grow, and we like the fact that they mature early. We've seen his calves consistently at the top of the sale offerings from many sales in the past couple years. We've had good luck infusing his genetics in our herd.*



VDAR CHURCHILL 1063

R E F	B	V D A R Churchill 1063													
		BD: 01/05/13	17628853												
	Hero 6267 of R R 2418		<table><tr><th colspan="2">EPD's</th></tr><tr><td>CED</td><td>6</td></tr><tr><td>BW</td><td>1.1</td></tr><tr><td>WW</td><td>65</td></tr><tr><td>YW</td><td>109</td></tr><tr><td>Milk</td><td>20</td></tr></table>	EPD's		CED	6	BW	1.1	WW	65	YW	109	Milk	20
EPD's															
CED	6														
BW	1.1														
WW	65														
YW	109														
Milk	20														
DFA Hero 6017															
D F A Ellura 502															
HA Windfall 6011															
V D A R Forever Lady 1409															
V D A R Forever Lady 9770															

*After seeing Churchill in person and seeing a lot of calves he sired, we chose to AI to him. His calves take off and grow immediately, and, they are impressive all the way through yearling. His sons in this offering will not disappoint.*



B BAR WINDY 7 3575 AT 3 YEARS OLD

R E F	C	B Bar Windy 7 3575																	
		BD: 02/20/15		18137181															
		Crook Mt Really Windy 141																	
		<table><tr><th colspan="2">EPD's</th></tr><tr><td>CED</td><td>10</td></tr><tr><td>BW</td><td>-2.1</td></tr><tr><td>WW</td><td>62</td></tr><tr><td>YW</td><td>110</td></tr><tr><td>Milk</td><td>26</td></tr></table>				EPD's		CED	10	BW	-2.1	WW	62	YW	110	Milk	26		
EPD's																			
CED	10																		
BW	-2.1																		
WW	62																		
YW	110																		
Milk	26																		
B Bar Windy 79																			
B Bar Lady Jewel 116																			
B Bar Rainmaker 9601																			
B Bar Eulima 357																			
B Bar Eulima 970																			
<table><tr><th>Act. BW</th><th>205 Adj.</th><th>Ratio:</th><th>365 Adj.</th><th>Ratio:</th><th>ADG:</th><th>Ratio:</th></tr><tr><td>82</td><td>779</td><td>104</td><td>1307</td><td>104</td><td>3.30</td><td>104</td></tr></table>						Act. BW	205 Adj.	Ratio:	365 Adj.	Ratio:	ADG:	Ratio:	82	779	104	1307	104	3.30	104
Act. BW	205 Adj.	Ratio:	365 Adj.	Ratio:	ADG:	Ratio:													
82	779	104	1307	104	3.30	104													

*Windy 7 was our pick at the 2016 Lund's B Bar Angus Ranch bull sale. We bought him with Jon Millar. We appreciate his feet and legs, his long neck, and his heavy bone structure. His calves have much that same look, and his daughters are turning into fantastic mothers.*



SAV WEST RIVER 2066

R E F	D	S A V West River 2066	
		BD: 02/23/12	
		17318919	
		G A R Gridmaker	
		S A V Bismarck 5682	
		S A V Abigale 0451	
		S A V Final Answer 0035	
		S A V Emblynnette 0491	
		S A V Emblynnette 7556	

EPD's	
CED	5
BW	1.1
WW	62
YW	108
Milk	24

Act. BW	205 Adj.	365 Adj.
75	960	1406

*We Al'd to West River because we have a few Bismarck cows and a few Final Answer cows in our herd, all of which we really like. We were interested to see what we'd get from a bull that has both in his pedigree. We are impressed with how his small sampling of calves has turned out thus far.*



## R E F **E** Sinclair Net Present Value

BD: 09/10/02

14311951

Gardens Prime Time

**N Bar Prime Time D806**

N Bar Miss Emulous A404

D H D Traveler 6807

**Ideal 4465 of 6807 4286**

E E 4286 of Ideal 2240 1254

EPD's	
CED	12
BW	-2.0
WW	41
YW	71
Milk	25

*Net Present Value is a bull we AI'd to about 10 or so years ago. He produced us some good mama cows. When cleaning out the semen tank, we found that we had a few straws left, and from those straws, we got a bull calf and a heifer calf.*

## R E F **F** V D A R Cedar Wind 1044

BD: 01/02/14

17964753

Cole Creek Cedar Ridge 1V

**V D A R Cedar Wind 8111**

V D A R Chloe 9727

DFA Hero 6017

**V D A R Lass 2556**

V D A R Lass 7815

EPD's	
CED	13
BW	-2.9
WW	46
YW	78
Milk	30

Act. BW	205 Adj.	Ratio:	365 Adj.	Ratio:
78	768	113	1227	107

*1044 was one of our picks at the 2015 Van Dyke Angus Ranch bull sale. We've had him collected a couple times, and we've also used him as a clean-up bull. He stamps his calves with a short-nose, attractive look, and with more consistency than we thought would ever be possible with one bull. He is a sure-fire calving ease sire. His first heifers calved in 2018, and we couldn't be happier with their docility, mothering, and milk. He is a small frame bull, so he is a great bull to use for moderating frame while maintaining performance. If you are ever in the area, we'd love to show you 1044, and he'd love to have you come and scratch him!*

## R E F **G** V D A R Cedar Wind 1064

BD: 01/02/14

17964754

Cole Creek Cedar Ridge 1V

**V D A R Cedar Wind 8111**

V D A R Chloe 9727

Hero 6267 of R R 2418

**V D A R Lass 2526**

V D A R Lass 5714

EPD's	
CED	6
BW	0.5
WW	47
YW	87
Milk	27

Act. BW	205 Adj.	Ratio:	365 Adj.	Ratio:
78	739	108	1222	106

*1064 was another pick at the 2015 Van Dyke Angus Ranch bull sale. He is a 1/2 brother to our 1044 bull. Compared to 1044, 1064 has a larger frame and has more power and capacity. As a clean-up bull, he's covered a lot of area and a lot of cows each year, and in doing so, he's held his condition. We recently had him collected, as we plan to use him in our AI program. The sons available in this sale are a bit younger as all his bulls are natural service calves.*



V D A R CEDAR WIND 1064 AT 3 YEARS OLD

## R E F **H** GLC Huckleberry 496

BD: 04/08/16

18488724

Tombstone 050

**GLC Huckleberry 4T6**

Garrigan F Direction 418

Sinclair Net Present Value

**DRL 0P2**

DRL Trav-004-572-Au Bar F114

EPD's	
CED	5
BW	1.1
WW	53
YW	89
Milk	25

Act. BW	205 Adj.	Ratio:	365 Adj.	Ratio:
86	675	104	1150	100

*"Huck-Baby," as we call him, is a bull we raised. We also raised his sire, and when his sire got injured and was unable breed any longer, we decided to use Huck-Baby in his place. We are sure glad we did, as he gave us an outstanding set of calves. Another bull that will provide growth without sacrificing maternal merit if you choose to keep any heifer calves.*

## R E F **I** CTS Remedy 1T01

BD: 08/23/11

17331233

Baldrige Kaboom K243 KCF

**Connealy Thunder**

Parka of Conanga 241

L T 598 Bando 9074

**CTS 7V03 Bellemere Maid 9T02**

SVA Rita 7V03 of 1407 502

EPD's	
CED	3
BW	-0.5
WW	57
YW	119
Milk	33

Act. BW	205 Adj.	Ratio:	365 Adj.	Ratio:
65	749	107	1443	110

*Remedy is a bull that we've used in our AI program. His calves grow phenomenally well, and we've liked the heifers that we kept from him. His calves grow with a little bigger frame, but they fill out well as they grow.*

## R E F **J** GLC Treasure 516

BD: 02/05/16

18464742

Ginger Hill Treasure 804

**Ginger Hill Treasure 233**

Ginger Hill Helen 880

V D A R Black Cedar 8380

**V D A R Miss Wix 4351**

V D A R Miss Wix 8629

EPD's	
CED	5
BW	-0.2
WW	36
YW	67
Milk	24

Act. BW	205 Adj.	Ratio:	365 Adj.	Ratio:
72	699	108	1208	106

*Treasure is a bull that we raised from a bred heifer we bought from Van Dyke Angus Ranch. He was used on a couple cows during AI season, and he cleaned up our registered heifers. Since many of his calves were young, only one of his bull calves made the sale.*

*We currently have semen available from the following herd sires:*

- **B Bar Windy 7 3575**
- **V D A R Cedar Wind 1044**
- **V D A R Cedar Wind 1064**

*Give us a call if you are interested!*

**R E F J GMRA Stetson 2240**  
 BD: 01/21/12 1525314

LJC Lancer 806  
 LJC Mission Statement P27  
 LJC Hannah 106  
 Basin Hobo 79E  
 GMRA Venice 359  
 GMRA Venice 146

EPD's	
CED	15
BW	-2.2
WW	67
YW	118
Milk	33
ME	2

HB	GM	Act. BW	205 Adj.	Ratio:	365 Adj.	Ratio:
165	51	77	751	116	1258	110

We decided to AI to Stetson as he's a complete outcross in our herd. With his calving ease and growing ability, we knew he'd be a good combination with our cows.

**R E F K Brown AA Prestigious B5153**  
 BD: 01/09/14 1694577

HXC Conquest 4405P  
 LSF Takeover 9934W  
 LSF Wideload R5014 U8061  
 5L Destination 893-6215  
 Brown Ms Destination T7634  
 Brown Ms Cherokee P7916

EPD's	
CED	13
BW	-1.3
WW	64
YW	94
Milk	13
ME	2

HB	GM	Act. BW	205 Adj.	Ratio:	365 Adj.	Ratio:
179	49	79	643	ET	956	ET

Prestigious is a bull we've used in our AI program for two years now. We like his look and his pedigree, and we are impressed with the vigor and growth in his calves. Unfortunately, we only got one bull from him this year, but we got a nice handful of heifers that we are excited to add to the herd.

**R E F M CTS S Bar U Fusion 577**  
 BD: 03/30/15 3493484

Andras In Focus B175  
 Andras Fusion R236  
 Andras Belle B167  
 CBR Ram Rod 5314-8327  
 S Bar U Lizzie 383  
 S Bar U Lizzie 438

EPD's	
CED	15
BW	-2.9
WW	43
YW	65
Milk	29
ME	-6

HB	GM	Act. BW	205 Adj.	Ratio:	365 Adj.	Ratio:
214	47	84	679	111	972	104

This is a Fusion son that we raised. We were excited that this AI match ended up in a bull calf because it combined a complete outcross genetic in our herd with our Lizzie cow line. We fell more in love with him as he got older, and we heavily infused him in our herd while in service. His calves have turned out as well as he has.

**R E F N CTS S Bar U Tradition 468**  
 BD: 04/06/14 1713500

5L Timely Tradition 653-88V  
 Tradition 81 SCN  
 Miss PBC 914 SCN  
 CTS S Bar U Landon 760  
 S Bar U Sonja 1120  
 S Bar U Sonja 487

EPD's	
CED	10
BW	0.8
WW	45
YW	74
Milk	22
ME	-2

HB	GM	Act. BW	205 Adj.	Ratio:	365 Adj.	Ratio:
167	46	88	635	108	987	108

This is another bull we raised that goes back to the famous 5L Tradition. The dam goes back to the legendary Glacier Logan. We liked the combination in his pedigree, and we really appreciated how he developed as a yearling. For this reason, we decided to keep him as a herd bull for our cows. You can expect his sons listed in this offering to grow up some outstanding steer calves without sacrificing longevity.



GMRA STETSON 2240

**R E F L Lone Tree Redemption C005**  
 BD: 01/26/15 3494257

Beckton Nebula P P707  
 Brown JYJ Redemption Y1334  
 JYJ Ms Jolene W16  
 BSKF Trendsetter U222  
 Lone Tree Pralee A065  
 TLS Pralee X0329

EPD's	
CED	19
BW	-5.6
WW	45
YW	77
Milk	19
ME	-5

HB	GM	Act. BW	205 Adj.	Ratio:	365 Adj.	Ratio:
200	49	60	630	95	1040	99

This Redemption son is one we purchased from 2016 Lone Tree Red Angus bull sale. He has been a sure-fire calving ease bull, and we've been very satisfied with how both his bulls and heifers have turned out. Again, we only got one bull calf from him this year, and due to an injury, this 2018 calf crop was his last.



CTS S BAR U FUSION 577 AT 2 YEARS OLD



CTS S BAR U TRADITION 468 AT 2 YEARS OLD





*Some call it the middle  
of nowhere.  
I call it the center of  
my world.*







16699 216<sup>th</sup> Ave.  
Dupree, SD 57623

Check out our website, [www.garrigancattle.com](http://www.garrigancattle.com),  
for sale videos and more information!

